

This PDF was generated on 27/01/2022 from online resources of
the **Qatar Digital Library**

The online record can be viewed at:

http://www.qdl.qa/en/archive/81055/vdc_100000001273.0x0001ca

It contains extra information, high resolution zoomable views and transcriptions.

Holding Institution	British Library: India Office Records and Private Papers
Reference	IOR/L/MAR/A/XL
Date(s)	27 Mar 1624-12 Oct 1626 (CE, Gregorian)
Written in	English in Latin
Extent and Format	1 volume (50 folios)
Copyright for document	Open Government Licence



About this record

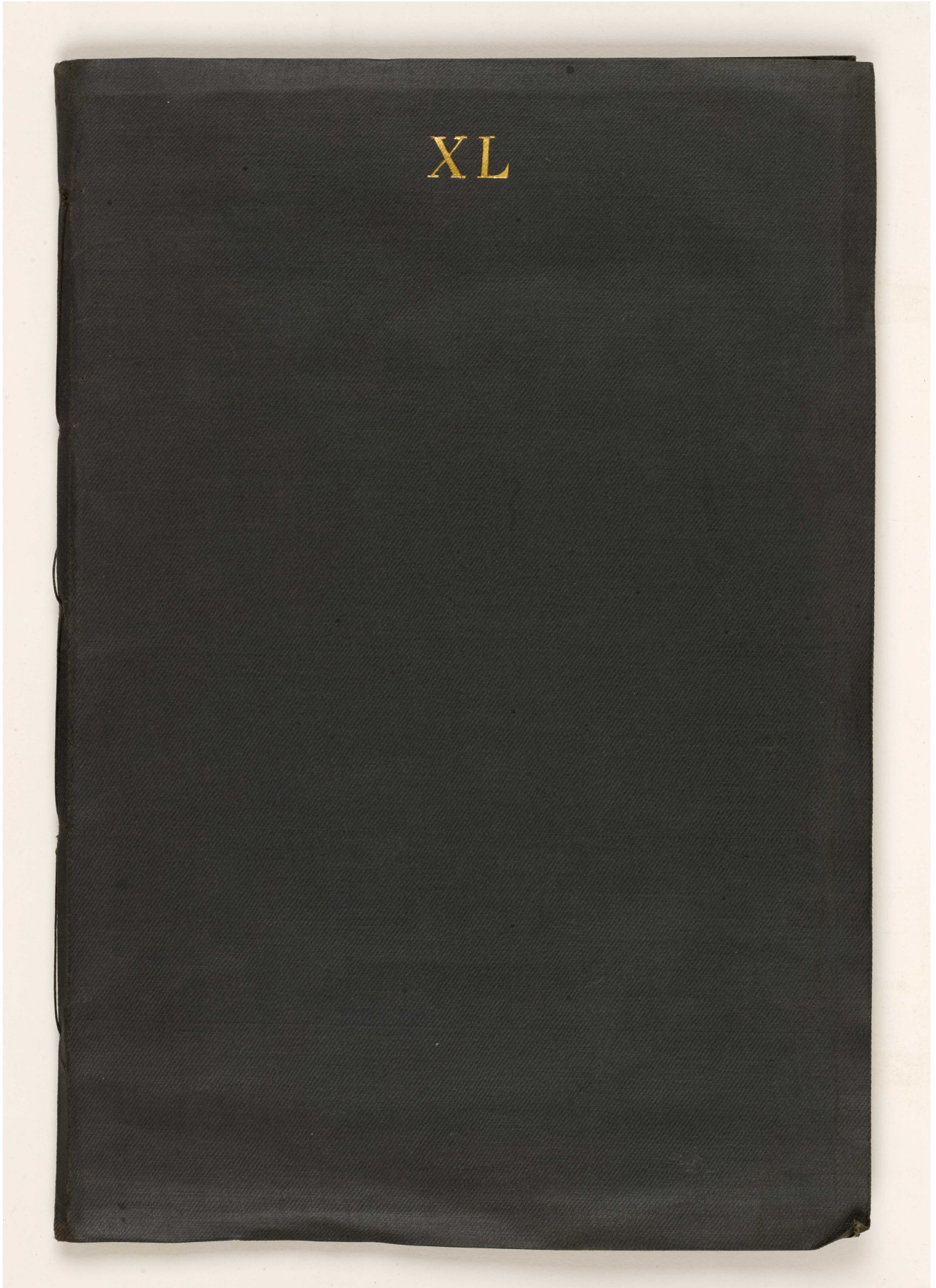
Journal of the voyage of the East India Company ship *Royal James* by Richard Monck from England to Surratt [Surat, also written in the journal as Surrat], and back to England between 27 March 1624 and 12 October 1626 (Captains John Weddell and Richard Swanley). The journal employs Old Style (Julian) dates only.

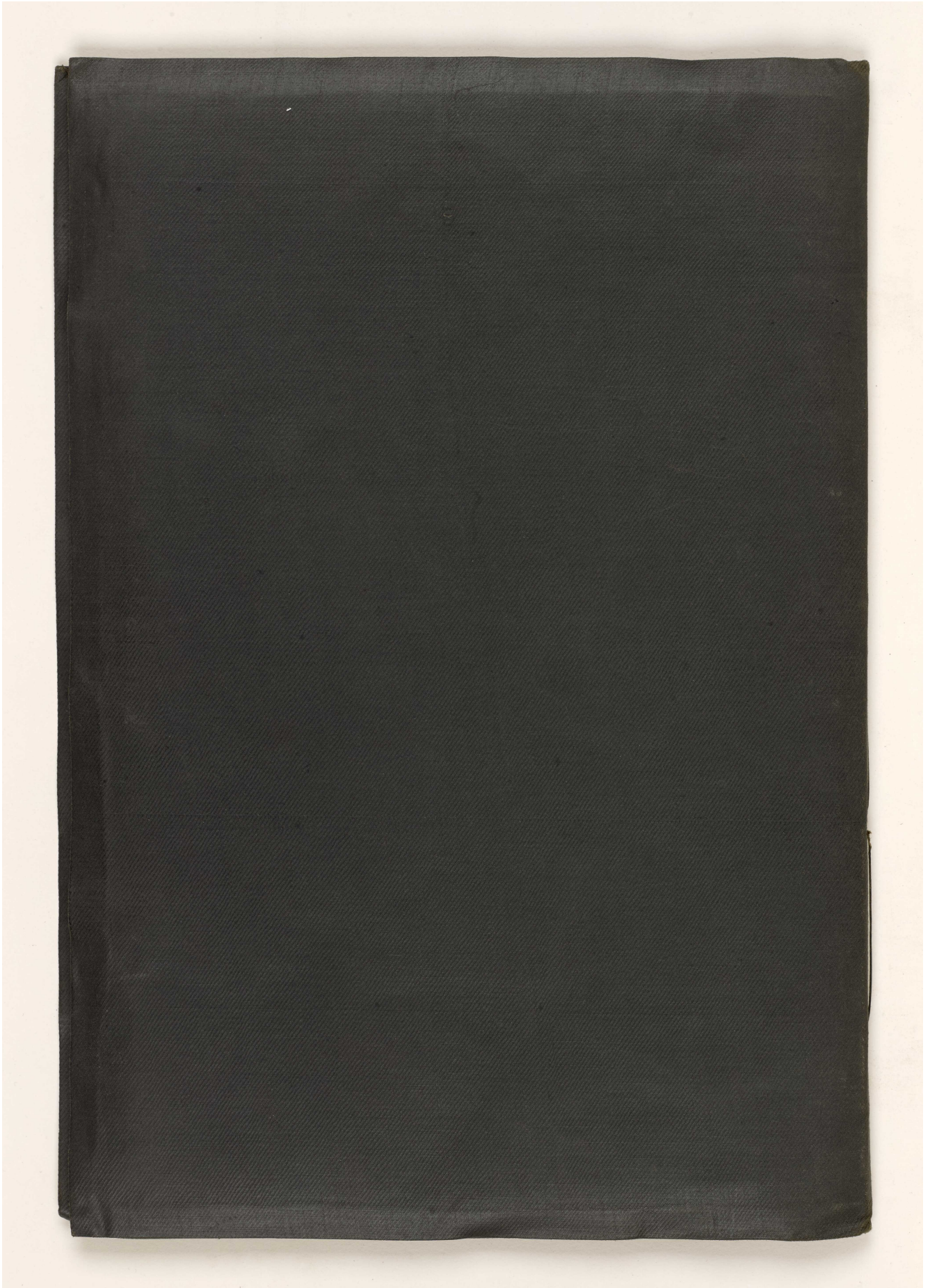
The journal consists of tables of entries recording navigational information under the following column headings: dayes [days], course, leagues, departures, longitude, E or W, variations wendes [winds] and in addition general remarks. The journal mentions contact with other East India Company ships (i.e. *Blessing, William*), contact with Dutch East India Company ships, and contact with Dutch [Dutch] fleet and Portuguese fleet. It also mentions carried goods. The entries contain some drawings of faces on folio 14. In addition, the journal contains consultations on the *Royal James* taken during 1624 (folios 38-51).

The journal mentions the fact that from Surratt the ship went to Gombroone [Bandar-e 'Abbās, also written in the journal as Gumborone, Gambroon, Gombroone, and Comorund], where Commander John Weddell joined a Hollande [Dutch] fleet to fight the Portuguese fleet. The entry gives a brief account of the battle, which lasted for several days, and mentions the total number of deaths and injuries in the English fleet (folios 7-10).

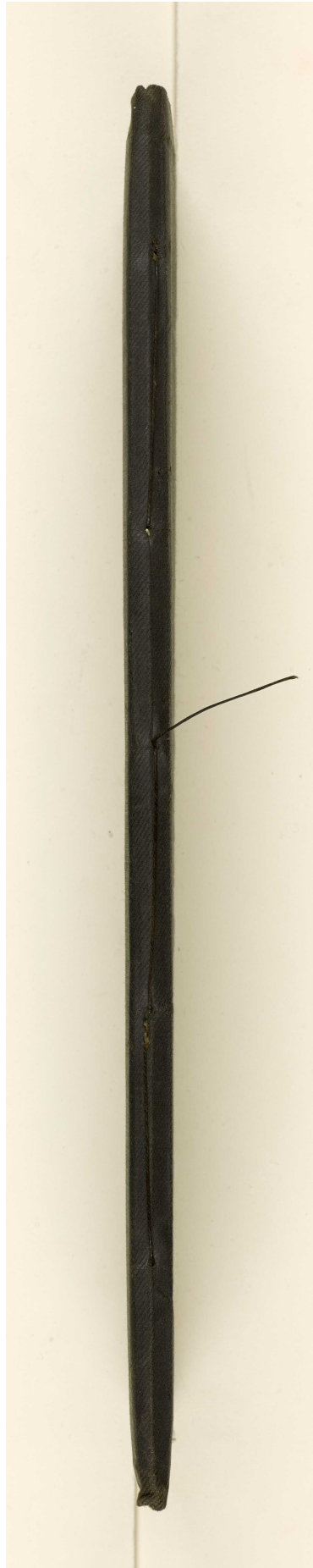
The ship's route is as follows (dates given are for arrival unless otherwise indicated): Downs, 27 March 1624 (folio 2); Cape of Good Hope, 17 July 1624 (folio 4); St Larrince [St Lawrence, i.e. Madagascar], 21 August

1624 (folio 4); Mohelia [Moheli, Comoros], 31 August 1624 (folio 4); Surratt, 12 October 1624 (folio 6); Land of Persia, 21 December 1624 (folio 8); Gombroone , 28 December 1624 (folio 9); Java, 5 June 1625 (folio 13); Bantum [Bantem], 6 August 1625 (folio 16); Gombroone, 18 November 1625 (folio 16); Swally [Suvali], 12 April 1626 (folio 18); Cape [Cape of Good Hope], 8 July 1626 (folio 21); Santta Lena [Saint Helena], 6 August 1626 (folio 21).





Royal James: Journal [spine] (3/80)



Royal James: Journal [edge] (4/80)

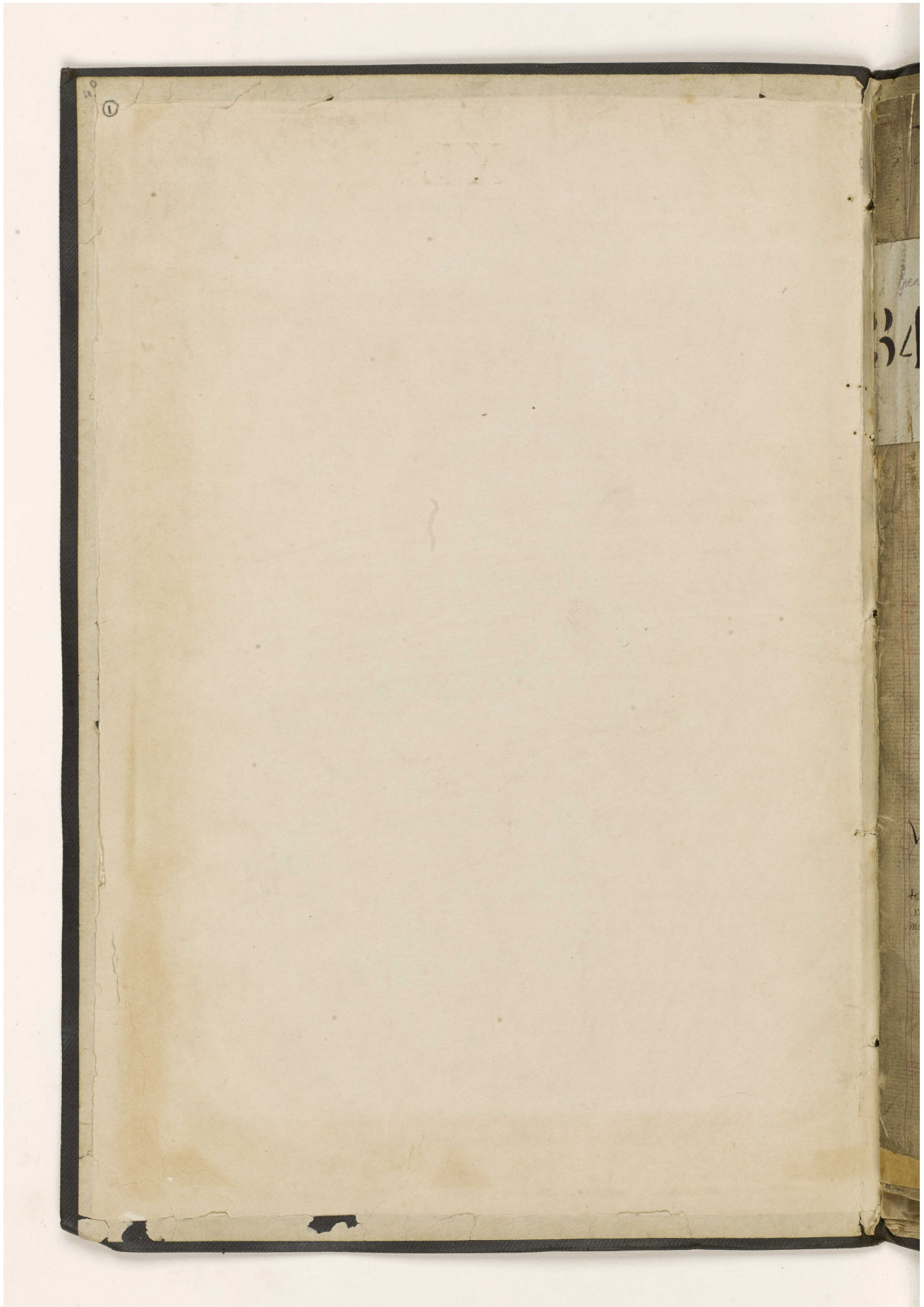


Royal James: Journal [head] (5/80)



Royal James: Journal [tail] (6/80)





The Month of April Anno Domini 1624

On the 12th we met chased a small Portugall which was found bound for the
Guan Canaxie laden with wheat

From the 12th day at noon to 12 at night the course was S by W 22 leagues and
then we found a gull the ship bore to the N^W Judging it should come to the
of Canaxie

From 12 to 4 the 13th in the morning we hauld 2000 it was made the Guan
Canaxie alone & port bearing S and by west some 3 leagues of then we speaking our
course S E intending to have weathered it. But being land 8 or 9 leagues S W
and came throught the lowe point a port of

On the 14th in the morning the point of Canaxie bore N 14 leagues of it was touched & known

The tabel for the Month of April Anno 1624

Days	Course	Leagues	Latitude	Longitude	Compass	Winds
1	S ^W by S	32	46 11 00	11 11 00	3 11 30	W ⁺
2	S ^W by S	19	45 11 19	11 11 41	4 11 11	W ⁺
3	S ^W by W	15	44 11 54	11 11 37	4 11 40	W ⁺
4	S ^W by W	20	44 11 20	11 11 42	5 11 30	W ⁺
5	S 1/2 E by S	54	42 11 33	11 11 10	5 11 40	W ⁺
6	South	19	41 11 36	11 11 11	5 11 40	W ⁺
7	S 1/2 E by S	25	40 11 20	11 11 00	5 11 48	W ⁺
8	South	29	39 11 20	11 11 11	5 11 48	W ⁺
9	South	47	36 11 50	11 11 11	5 11 48	W ⁺
10	South	41	34 11 40	11 11 11	5 11 48	W ⁺
11	So. westerly	50	32 11 10	11 11 00	5 11 53	W ⁺
12	S by west	54	29 11 43	11 11 08	6 11 23	W ⁺
13	S by west	22	28 11 11	11 11 17	6 11 30	W ⁺
14	S S west	20	26 11 42	11 11 20	7 11 00	W ⁺
15	S S west	33	25 11 00	11 11 36	7 11 36	W ⁺
16	S by west	40	22 11 43	11 11 29	8 11 00	W ⁺
17	S by west	54	20 11 03	11 11 34	8 11 39	W ⁺
18	South	53	17 11 31	11 11 11	8 11 40	W ⁺
19	South	40	15 11 07	11 11 11	8 11 40	W ⁺
20	S 1/2 East by S	30	17 11 19	11 11 15	8 11 35	East
21	South	20	12 11 00	11 11 11	8 11 35	East
22	South S E	23	10 11 38	11 11 44	8 11 11	East
23	S S East	23	09 11 55	11 11 24	8 11 11	East
24	S S East	24	00 11 14	11 11 27	7 11 20	East
25	S S East	26 2/3	07 11 30	11 11 32	6 11 40	East
26	S S East	22	06 11 36	11 11 24	6 11 24	East
27	S S East	22	05 11 30	11 11 24	6 11 00	East
28	S S East	20	04 11 36	11 11 22	5 11 30	East
29	S S East	11	04 11 03	11 11 14	5 11 24	East
30	S 1/2 E by S	7	04 11 00	11 11 20	5 11 20	East

May

The Month of May Anno Domini 1624

3

12th The 12th of max in latitude and longitude at table see Book of the Equinoctial Line

22th The 22th in latitude and longitude at table see had very much fogs and rains

The Table for the Month of May 1624

Days	Course	Leagues	Latitude	Longitude	E or W	Variation	E or W	Winds
1	E 1/2 Southly	4	3 1/2 42	11 1/2 14	W+			Variable with rare
2	S w by S	11	3 1/2 47	11 1/2 16	W+			Boatmen of S E and of E S rare most parts
3	S w by W	14	2 1/2 59	11 1/2 34	W+			N E much rare
4	S E by East	1 2/3	2 1/2 56	11 1/2 04	W+			Variable with rare
5	W by S	7	2 1/2 02	11 1/2 21	W+			Variable with rare
6	W S W 1/2 W	10	2 1/2 24	11 1/2 47	W+			S S E rare
7	S W by W 1/2 W	12	2 1/2 07	11 1/2 31	W+			part S E by E
8	S W by W 1/2 W	15	1 1/2 46	11 1/2 59	W+	4 1/2 N		S East
9	W S W	20	1 1/2 24	11 1/2 55	W+			S East
10	S W by W	16	1 1/2 50	11 1/2 40	W+			S E by S
11	S W by W 1/2 W	15	1 1/2 30	11 1/2 40	W+			S East
12	S West	10	Equinoct	11 1/2 30	W+	4 1/2 N	E+	S S East
13	S w by W	19	S 1/2 Lat 50	11 1/2 40	W+	4 1/2 N	E+	S S East
14	S W	15	1 1/2 02	11 1/2 32	W+	4 1/2 N	E+	S S E
15	S W	22	1 1/2 49	11 1/2 44	W+			S S E most part
16	S S W	17	2 1/2 36	11 1/2 19	W+			S S East
17	S S W 1/2 W	22	3 1/2 35	11 1/2 25	W+			S S E
18	S by W 1/2 W	23	4 1/2 41	11 1/2 20	W+	6 1/2 N	E+	S S E
19	South	20	5 1/2 40	11 1/2 35	W+	6 1/2 N	E+	E by South
20	South	22	6 1/2 46	11 1/2 35	W+			East
21	S 1/2 W	20	7 1/2 46	11 1/2 05	W+			East
22	S by W 1/2 W	10	8 1/2 40	11 1/2 15	W+	6 1/2 N	E+	East by South
23	S by W	27	10 1/2 11	11 1/2 12	W+			much rare with E a S S you
24	South	25	11 1/2 15	11 1/2 15	W+			East
25	South	21	12 1/2 19	11 1/2 15	W+	9 1/2 N	E+	East
26	South	25	13 1/2 34	11 1/2 15	W+			East
27	South	24	14 1/2 43	11 1/2 15	W+			East
28	South	17	15 1/2 35	11 1/2 15	W+			East
29	South	04	15 1/2 47	11 1/2 15	W+	10 1/2 N	E+	East little
30	South	10	16 1/2 15	11 1/2 15	W+			East
31	South	06 1/2	16 1/2 35	11 1/2 15	W+			N W

June 1624 *Journal of the Month of June Anno Domini 1624*

16th The 16th of June about 2 a clock in the afternoon we spent our maine for victuals and about 5 o'clock the same afternoon we spent our bread and gott we gott up another the same night

19th The 19th we met with an English against home we had formerly left in longitude and latitude as ye table for this month appears

The tabell of the Month of June: Anno 1624

Days	Course	Leagues	Latitude	Longitude	Longitude	E or W	Variation	E or W	Winds
1	South	3	16 43	15 3	W ⁺				but little N ^o W
2	S by E	10	14 16	15 5					N ^o W
3	S E by E	10	10 03	14 54					N ^o N ^o East
4	S S E	21	19 44	13 55	W ⁺				N ^o N ^o East
5	S S E 7 ^o 25 E by	25	20 105	13 10	W ⁺				N ^o E by East
6	S S E	15	20 48	13 16	W ⁺				N ^o E by N ^o
7	S S East	14	21 35	12 19	W ⁺				W ⁺ N ^o W ⁺
8	S E 2 ^o 20 S by	30	22 36	11 06	W ⁺	12 35	E ⁺		N ^o W by N ^o
9	S E by E 4 ^o E by	45	23 51	10 45	W ⁺				N ^o W ⁺
10	E by 3 ^o S by	20	24 19	10 19	W ⁺	13 10	E ⁺		Variaboo
11	S E by East	05	24 11	10 11					little wind
12	S W 1 ^o W by	12	24 40	09 34	W ⁺				Variaboo
13	S W by S ^o	16	25 30	09 27	W ⁺				East much more
14	S W by S ^o	20	26 22	09 34	W ⁺				East much more
15	S W by W ⁺	23	27 26	10 30	W ⁺	15 10	E ⁺		East by South
16	S East	07	27 41	10 15	W ⁺				Variaboo
17	S E by E 6 ^o S by	14	28 00	09 32	W ⁺				N ^o N ^o W ⁺
18	South	10	28 30	09 55	W ⁺				W ⁺ N ^o W ⁺
19	S E by E 5 ^o S by	15	29 14	09 27	W ⁺				N ^o West
20	S E	20	29 44	08 50	W ⁺				N ^o West
21	E by S ^o 1 ^o S by	32	30 14	7 00	W ⁺				W ⁺ N ^o W ⁺
22	E by S ^o 1 ^o S by	40	30 56	6 11	W ⁺				W ⁺ N ^o W ⁺
23	E by South	31	31 14	5 30	W ⁺	15 10	E ⁺		N ^o W ⁺
24	E by South	32	31 32	4 54	W ⁺	12 10	E ⁺		W ⁺ N ^o W ⁺
25	E 1 ^o South by	40	31 46	4 59	W ⁺				W ⁺ N ^o W ⁺
26	E by South	32	32 05	4 34	East				N ^o W ⁺
27	E by South	42	32 29	3 37	East				N ^o W ⁺
28	E by South	43	32 54	2 06	East	10 17			N ^o W by
29	E 2 ^o 39 S by	25	32 54	1 04	East				Variaboo
30	East	05	32 57	1 06	East				Variaboo

12th
13th
14th
15th
16th
17th
24th
25th
29th
30th

1624

12th

13th

14th

15th

16th

17th

24th

25th

29th

30th

The 12th we met with weeds called Strumblowes a good signe of nearness and the
by my Judgment was some 75 or 80 leagues off but by reckning it was 100 or 120

The 14th we mad the land being the Sugar loafs bearing E by S by Compaſſe ſome
10 leagues of the Cape of good hope bearing S by S 16 leagues of the longitud
mad from the liard meridian to the meridian of the Cape of good hope
24 degrees according to Playne

The 15th we got to the Southward endeavouring to get about the Cape and at 12
o'clock the Table bore East 16 leagues of this day our way called a consultation who
thought our ſpent want of water and that we had many men sick in the
fleet in some of the 100 to 120 leagues in other more and less and fearing by reason
of the lateness of the season our men would be so much spent that we should not
be able to stay there we continued to bore some for the bay of Saldanus being the
16th we stood it to E and making our way S by S 16 leagues the wind at S & north
17th The 17th we anchored in Saldanus bay in 7 fathoms water bringing the Sugar loafs
S by W and the lower point west 1/2 South in bearing some for the Cape of good
we met with master Johnson and the 2 prizes which we took the night before

The 24th day of this present month having discovered all 3 leagues was made anchor
anchoring out of the bay thinking to get a safe but was more forced to com
to anchor againe the wind blowing S by W at 12 and blowing but little
wind

The 25th day noon at anchor all day being the wind at W by W

The 29th day in the morning we set sail about 12 o'clock in the morning the
wind at N by W and got to the westward of the Sugar loafs and then the wind
coming at S by W and being a little wind that we drove in to the Cape and anchored
in 50 fathoms with our 3 prizes and 2 half prizes and then the wind came at South
so that we rode but 2 hours but found it yet W and by South
S by S 50° W 19 leagues lat 27° 32' long 26° from description of the Cape of good hope 25

The Table for Suley till we fell with the Cape of good hope.

Days	Course	Leagues	Latitude	Longitude	Longitud	East or West	Variation	East or West	Winds
1	S E 1/2 S by	15	33 1/2 32	20 1/2 10	7 1/2 21	E	7 1/2 15	E	E by E
2	S E by 1/2 E by	10	33 1/2 57	11 1/2 46	8 1/2 07	E	11 1/2	11 1/2	N by E
3	S E by 1/2 E by	35	34 1/2 45	11 1/2 29	9 1/2 56	E	7 1/2 40	E	N by E
4	SSE	15	35 1/2 25	11 1/2 43	10 1/2 19	E	7 1/2 00	E	N by E
5	N by E	7	35 1/2 11	11 1/2 14	10 1/2 33	E	11 1/2	11 1/2	S by E
6	E by N	24	34 1/2 56	11 1/2 10	11 1/2 43	E	11 1/2	11 1/2	N west
7	E by N 1/2 N	46	34 1/2 10	2 1/2 12	13 1/2 55	E	11 1/2	11 1/2	S west
8	E by N 1/2 N	35	34 1/2 05	1 1/2 44	15 1/2 39	E	4 1/2 3	E	S by W
9	E by N	23	35 1/2 52	1 1/2 07	16 1/2 46	E	3 1/2 29	E	N west
10	E by N 1/2 N	34	33 1/2 42	1 1/2 45	18 1/2 31	E	11 1/2	11 1/2	W by W
11	E by N	20	33 1/2 42	1 1/2 20	19 1/2 55	E	11 1/2	11 1/2	W by W
12	E by N	16	33 1/2 32	1 1/2 50	20 1/2 45	E	11 1/2 40	E	W by W
13	E by S	20	33 1/2 42	1 1/2 59	21 1/2 44	E	11 1/2	11 1/2	W by W
14	E 1/2 S by	44	33 1/2 54	2 1/2 07	23 1/2 51	E	11 1/2	11 1/2	S by W

Month of August Anno Domini 1624

20th The 20th day our course was N° by N° 1 degree N° by 2 leagues lat 23 days 21 miles departure
47 miles longitude East from the maximion of the Cape of good hope 22 days 14 miles
the wind at S° by E° for the most part the variation in this lat is 15 days 40 miles
was then making an account that was more of the main of S° by E° 20 leagues
and bearing East in the lat above mentioned

21th From the 20th day till the 21st day 3 courses was N° by E° 18 by 2 miles East to 15 leagues lat
22 days 40 miles departure 32 miles long East from the maximion of the Cape of good
hope 22 days 40 miles this day about 10 o'clock we made the land of S° by E° 10 leagues
some 10 leagues of by our judgment and bearing East South to 10 in this lat about 10
entered and the variation being 10 days this day in the morning 4 tides was split
and found the variation in the lat of 21 days 50 miles 15 days 50 miles 4 hours 4 days 4 that
Augustans Day here of us by compass S° by E° 26 leagues of

26th The 26th day 3 courses was N° by E° 16 leagues lat 17 days 40 miles departure 9 miles East
from the maximion of the Cape of good hope longitude East 22 days 40 miles variation in
this lat 14 days 30 miles the wind being all night at S° by E° but in the afternoon at W° by
and N° by W° which blew more at midnight the variation in the lat of 17 days 40 miles
it is 15 days 12 miles East from the lat of 19 days 40 miles it is now come in to the latitude
of 17 days 30 miles was by great current that set South and by wind

27th From the 26th day till the 27th day 3 courses was N° by E° 23 leagues lat 16 days 41 miles
departure 12 miles East long East from the maximion of the Cape of good hope 22
days 1 mile the wind at S° for the most part lat 16 days 26 miles the wind came in
this lat was found by our lat and distances that there was a current that set N° West
for by the log was run but 16 leagues and by our observation 23 leagues

28th From the 27th till the 28th day 3 courses was N° by E° 20 leagues but by 3 leagues was run
but 14 leagues that was found that there was a great current that set N° West
lat this day 16 days 40 miles departure 10 miles long East from the maximion of the
Cape of good hope 22 days 11 miles the wind being for the most part to be calm
but in the night a fresh gale

29th From the 28th till the 29th day 3 courses was N° by E° 2 days 10 miles E° by 24 leagues but by
the log 16 leagues but by 3 courses and lat found 24 leagues the wind was
more to the North that the current set N° and S° lat 14 days 30 miles departure 16
East long East from the maximion of the Cape of good hope 22 days 24 miles the
wind variable

31th From the 29th till the 31st day at noon 3 courses was by compass between the N° and by
North and the N° and by East leagues by the log 42 the wind South to 10 the 4th hours
the ship should have run 50 leagues if 5th hours had run for the leagues that
found the current to have helped us the other 4th hours might not have found the
ship to have run by our observation at least 6 leagues in 24 hours more than by
the log which could not be but by some current that set to the Northward
but this 4th hours 5th found the ship to have run 11 leagues more than by the log
by observation which by this current should be Southward which by having
with the land of Moheli was found the night was the last day of August
about 2 o'clock our course this 4th hours is North and by East 2 days East to 10

Current

Current

Current

Current

Current

Current

allings
with the
land
of Moheli

The Tabell for the Moonth of August Anno 1624

Days	Course	Leagues	Latitude	Departure	Longitude	E or W	Variation	E or W	Remarks
1	E 3/4 S by	52	35 1/2 25	2 1/2 40	3 1/2 10	E			W N W
2	E 1/2 S by	21		1 1/2 6	4 1/2 6	E			Variabell
3	South by East	14	36 1/2 10		4 1/2 6	E	the windes		variabell by in the seas
4	E N E	17	37 1/2 2	1 1/2 45	5 1/2 1	E			N West
5	N E by E 1/2 N	50	35 1/2 51	2 1/2 42	7 1/2 13	E			N and W by East
6	East	22	35 1/2 51	1 1/2 6	8 1/2 19	E			West N East
7	E by South	27	36 1/2 11	1 1/2 19	9 1/2 30	East			N N W
8	East	27	36 1/2 11	1 1/2 21	10 1/2 59	East	9 1/2 30	west	N by W
9	E by N 2 E by	25	35 1/2 40	1 1/2 13	12 1/2 12	East			N W
10	N E by E	24	35 1/2 07		13 1/2 11	East			W N W
11	N E by E	30	34 1/2 17	1 1/2 14	14 1/2 25	East			W N W
12	N E by E 1/2 E	39	32 1/2 50	1 1/2 34	15 1/2 59	East			S by East
13	N E by N	29	31 1/2 46		16 1/2 47	East	14 1/2 10	west	S S W
14	N E by N	20	30 1/2 50		17 1/2 20	East			S W by S
15	N East	12	30 1/2 31		17 1/2 15	E	14 1/2 14	west	S W by S
16	N East by N	24			18 1/2 24	East			S S E
17	N East by N	47	27 1/2 37	1 1/2 10	19 1/2 42	East			S East
18	N E by N 1/2 N	40	25 1/2 56	1 1/2 04	20 1/2 40	East			S East by E
19	N N E	33	24 1/2 30		21 1/2 27	East	15 1/2 30		S East with roons and roons and sea
20	N E by N 1/2 N	20	23 1/2 21		22 1/2 14	East			S E by S
21	N E 1/2 E by	15	22 1/2 40		22 1/2 45	East	15 1/2 56	west	Variabell
22	N N W 1/2 W	29	21 1/2 35	West 40	22 1/2 5	East	15 1/2 54	west	S W
23	N by W 1/2 S	34	19 1/2 59	West 33	21 1/2 32	East			South
24	N N W	10	19 1/2 04		21 1/2 32	East	14 1/2 45	west	South
25	N by E 1/2 E by	12	18 1/2 29		21 1/2 40	East			S by East
26	N by East	16	17 1/2 46		21 1/2 49	East	14 1/2 50	west	S by East
27	N by East	23	16 1/2 41		22 1/2 01	East			South
28	N by East	20 1/2	15 1/2 40		22 1/2 11	East			South almost true
29	N by E 1/2 E by	24	14 1/2 30		22 1/2 27	East			Variabell
30									

September 1624 *David* The Twelfth of September Anno Dom 1624

From the last day of August till the first of September wee went to the
North to get to the Kings Downs and about 12 a clock this day we came
to an Anchor in 30 fathoms right against the Kings Downs the Longitude
that I made from the meridian of the base of good hope to the maxi-
mum of Melicia a bearing to a land 22 degs 49 mins.

2 The second day wee got away from Melicia about 5 a clock in the after-
noon with the East the wind under larrell and we got to be for 10 but
being too forward of us and wee going to the Suddens of the Island of
Comarcinus and thence to the westward wee got there some way
from 5 a clock the 2 day till 12 a clock.

fare wether 1st 3rd From the 2 day till the 3 day I course made by 5 halfe by 12 los but by 3
loos the Expedition but 2 leagues so that by judgment wee had the help
of the current that set to the North last 4 days 42 degrees 30 Longitude
East from the meridian of the base of good hope 24 degs 27 mins 53 s.

The 15 day I course made by 2 1/2 los last 7 days 46 degrees 10 mins
from the meridian of the base of good hope 35 days 30. From the 9 day of
this month till the 15 day wee had no observation being the some was
in the night and before we got that by 3 looses and by 3 observations I
found that the ship had run every 24 hours 24 miles more then the Log
said the night was by observation that set to the 1/2 the night by 3
looses that wee fores away and by observation that I found.

From the 15 day till the 16 day I course was 1/2 1/2 los last 1 day 23. Sep
1 deg 30 Longitude East from the meridian of the base of good hope 38 days 30
the wind for the most parts at 2 in the 24 hours by the Log we
run but 24 looses but by the help of the current 40 looses variation
in the last of 9 deg 33 10 degs 43 mins

From the 16 day till the 17 day I course was 1/2 1/2 halfe by 3 looses last 9
20. Departure 60 mins but by the Log wee should have run 20 los 17 1/2
was 23 los more then it could find by my self the current set my
to the S^W at 1/2 looses.

The 23 day I course by compass 1/2 1/2 by 3 de xito course 1/2 1/2 although
but by 18 looses more 24 degs 2. The night was by observation that
out of the road sea to the Eastward the night made us make an
Eastward way departure 30 Longitude East from the meridian of the
base of good hope 40 days 33. Variation in the last of 12 deg 10 degs
43.

The 24 day I course was by compass 1/2 1/2 20 los and so we made 5
course the current being at north at the variation last by 18
15 degs 21 mins departure 45 mins Longitude East from the
meridian of the base of good hope 42 days 57 mins
variation 19 degs 21 minutes this day the wind came
at the North west with Rain.

1624

The Tabell for the Month of September Ann 1624.

Days	Course	Regress	Partitid	Lejantur	Brigitid	East or West	Variation	East or West	Winds
3	N ^o N ^o East	16	11 // 40	10	23 // 7				S w ^t
4	N ^o by E ^t	10	11 // 09	08	23 // 12				S w by S ^o
5	N ^o N ^o E ^t	10	10 // 22	12	23 // 24	East	14 // 40	West	S E ^t
6	N ^o by E ^t	34	08 // 41	20	23 // 44	East			S ^o East
7	N ^o by E ^t 1/2 E ^t	29	06 // 45	36	24 // 20	East			S ^o East
8	N ^o by E ^t 1/2 E ^t	42	04 // 42	36	24 // 56	East			S ^o S ^o East
9	N ^o by E ^t 1/2 E ^t	42	02 // 42	34	25 // 32	East			S ^o E by East
10	N ^o E by N ^o	36	01 // 42	50	26 // 30	East			S ^o w ^t
11	N ^o East	40	north line	13	27 // 55	East			S ^o w ^t
12	N ^o East	45	01 // 49	36	29 // 31	East			S ^o w ^t
13	N ^o East	56	3 // 40	59	31 // 30	East			S ^o w ^t
14	N ^o East	56	5 // 44	59	33 // 59	East			S ^o west
15	N ^o East	56	7 // 46	59	35 // 50	East			S ^o west
16	N ^o East	40	9 // 23	34	37 // 35	East	10 // 43	W ^t	S ^o west
17	N ^o 1/2 East 1/2 E ^t	08	9 // 20	06	37 // 41	East			S ^o west gallons
18	N ^o East	08	9 // 45	14	37 // 50	East			variables
19	N ^o East 1/2 E ^t	08	10 // 00	10	30 // 16	East	19 // 10	W ^t	S ^o west
20	N ^o E by N ^o 1/2 N ^o E ^t	12	10 // 30	10	30 // 35	East			S ^o west lines
21	N ^o E by N ^o 1/2 E ^t	23	11 // 23	43	39 // 10	East			S ^o w ^t
22	N ^o E ^t 1/2 N ^o	18	12 // 00	44	40 // 05	East			S ^o west
23	N ^o E ^t	14	12 // 10	30	40 // 35	East	45	W ^t	S ^o west
24	E N ^o E 1/2 E ^t	16	12 // 46	45	41 // 20	East			S ^o west
25	N ^o East	20	13 // 31	45	42 // 05	East	19 // 24	W ^t	N ^o west
26	N ^o N ^o East	40	15 // 10	45	42 // 50	East			S ^o west
27	N ^o N ^o E 1/2 E ^t	11	15 // 51	10	43 // 00	East	18	W ^t	variables north much rain
28	N ^o E 1/2 E ^t	7	16 // 44	15	43 // 23	East			variables and foul
29	N ^o by E	5	16 // 22	3	43 // 26	East			variables
30	North	12	16 // 54		43 // 26	East			little wind

October 1624 Day 6
 The month of October Anno Domini 1624

The 12 day of course was East 4 leagues Southward 2d leagues East 19 days
 50 miles departure 1 degree 11 miles long East from the maximion of
 Cape of good hope 50 degrees 40 minutes the wind at North North
 west at a blow in the morning was eundod and had a 140 fathoms
 of lead: here land was being then by 30 fathoms of St Johns 16 los
 at 4 a clock in the afternoon was eundod and had 45 fathoms
 the ship having run some 12 los from 8 till 10 sundry and then a
 way by compass was toward the East and by South and the East South
 East.

From the 12 day till the 13 day of course was East 30 leagues East 18
 50 miles departure 1 degree 20 minutes long East from the maximion of
 Cape of good hope 50 degrees and 10 minutes the wind at N. N. W. at the
 24 hours of departure was 45 fathoms the night was had the 12 day at 4 a clock
 in the afternoon and had it continued till to a clock the 13 day in the
 morning between 55 and 62 fathoms at night till was eundod and
 had but 25 fathoms of this having run some 24 los from the time
 that was had 45 fathoms sunset and then a way by compass was
 toward the East and by S and the S. S. E.

From the 13 day till the 14 day of course was 3^d day 10 Southward 24 leagues
 East 19 days 11 miles departure 1 degree 11 long East from the maximion
 of Cape of good hope 50 degrees 50 minutes arriving to Cayenne till was
 had by the land of St Johns the course that was had from 12 a
 clock the 13 day till the 14 day in the morning was 25 fathoms
 to 19 fathoms of this having run 10 los till a clock in the morning
 the 14 day and then was had from 10 fathoms to 12 fathoms was run
 6 los and then a way by compass S. S. E. at day light was made the
 land being 7 leagues off between John Deuarts and Deamon at 1 a
 clock in the afternoon was came to anchor in 14 fathoms being that the
 tide of ebbe was then full spring that was felt to the 3 was the wind
 at 1 then at a clock at night was set Cayenne South was between 14
 fathoms and 16 fathoms at 2 a clock at night was came to an anchor
 the tide of ebbe to the N. N. East and S. W. being light to the northeast
 of John Deuarts.

The 15 day at a clock was made layls and came to anchor again at 2
 a clock in the afternoon the depth was 19 fathoms: from the time that
 was set Cayenne till was came to an anchor was from 10 fathom to 21 fath
 and in 21 fathom was came to an anchor: these words of St wall mention
 it distant of from Deamon 10 leagues to the Southward Deamon
 bearing by compass S S E you shall know that for it is in 5 hummer
 hot: which lies by Alon deus and you shall see no hid land to the
 northeast of Deamon but only one hummer: at 2 a clock at night
 was came to anchor in 16 fathom the depth was had was from 21 fathoms
 was met the day the which was bound for to take the land at Cayenne
 at the Cape Comorans was being 5 los to the Southward of Deamon

The 16 day at a clock in the morning was made layls and came to anchor
 again at 3 a clock in the afternoon our depth was from 16 fathom
 to 10 fathom but now was less than 10 fathom


I.O.R.

The Tabele for the Moonth of October In no 1624

Days	Course	Leagues	Latitud	Longitud	Course	Latitud	Longitud	Course	Latitud	Longitud	Remarks
1	N ^o E 1/2 N	12	17 21	0 24	43 50	East	17 50	West			variabot
2	N ^o E 2/2 E	24	18 04	46	44 36	East	17 35	West			S ^o W ⁺
3	N ^o E 1/2 N	23	18 44	53	45 29	East					S ^o W ⁺
4	N ^o E 1/2 E	9	18 58	23	45 52	East					South
5	N ^o E	13	19 26	28	46 20	East					S ^o W ⁺
6	N ^o E by E	9	19 41	22	46 42	East	17 30	West			S ^o West little
7	E by N 1/2 N	22	20 10	62	47 44	East		West			West N ^o W ⁺ S ^o W ⁺
8	E 1/2 S by E	24	19 22	11	48 55	East					S ^o W ⁺
9	E 1/2 South	19	19 51	56	49 51	East	16 50	West			N ^o W ⁺
10	E 1/2 N by E	11	19 55	32	50 22	East					beny-variabell
11	E 1/2 S	22	19 55	06	50 29	East					N ^o W most spack
12	E 1/2 South	28	19 55	11	52 40	East					N ^o N ^o W ⁺

13

The Table for the Month December Anno 1624.

Days	Change.	Leagues	Latitude	Longitude	Longitud	E or W	Variati	E or W	Wendes
1	N ^o by W $\frac{1}{2}$ W by	19	21 11	14	2 6		15 55		N ^o E by E
2	N ^o W by W $\frac{1}{2}$ W by	21	21 44	53	2 59				N ^o E by E
3	W by N ^o W N ^o by	21	22 03	L	3 59				N ^o E by E most part
4	N ^o W $\frac{1}{2}$ N ^o by	29	23 11	58	4 54				N ^o E by E
5	N ^o W by W $\frac{3}{4}$ W by	10	23 44	42	5 36				N ^o E by E
6	N ^o W by W	03							fallme
7	N ^o N ^o west	07	24 09	15	5 51				W by N ^o
8	N ^o W $\frac{1}{2}$ N ^o by	05	24 21	9	6 10				W by N ^o S ^o W
9	S by W	06	24 10	4					W N ^o W
10	W by N ^o W by		24 04	30	6 34				Uaxiabot
11	W $\frac{3}{4}$ N ^o by	32	24 10	L 36	7 10				E and at E N ^o E
13	^{Answers} W $\frac{1}{2}$ N ^o	45	24 14	2 14	10 24				Vaxiabot
14	W N ^o W	16	24 19	12	10 36				fallme
15	W N ^o W	16	24 19	12	10 36				fallme
16									fallme
17	W N ^o W	35	25 0	L 34	11 50				Uaxiabot
18	N ^o E by N ^o	12	25 20	10					Uaxiabot

December 1624 *Days* *Mount of* *December Anno Domini 1624*

The 12 day in the morning was sprung a small gale the night rose to
12. a fust and at 2 a clock in the morning the gale on of the wind rose to the
our 23 was out too by the which they towed home a fust being
frigate about 70 or 80 tonnes laden with negroes and rice and can
bourne Sittob and Cotton the day at night at the sound of the gun
was made the land of Arabia being our Kingdom

The 16 day about 5 a clock was borne some for English being that they
frigate was borne and about 7 a clock at night was come to an anchor
in 12 fathoms the lowest bearing by Ameno 8 1/2 E and 8 1/2 E and the
flat full that by the to the westward of the 20 by N 1/2 E

The 20 day of this month was made another out of Captus 200 with 189
minds at N being of 189 Shores

The 21 day was 200 between the land of Africa and the land of Arabia
because that the wind about 12 a clock blew down the gulf at N
with at 1 a clock in the morning the wind came of from the shore
so that was did by N 1/2 E and our stems the which it at most 2 fathoms
along of the shore

The 22 day about 5 a clock in the afternoon was come to anchor in 30
fathoms at Mount of Zumbarrath being Calms and at 10 of the m
gale but was did not a blow 2 hours and then the wind came at 5 by
and by then was made and steered away N 1/2 E by compass

The 23 day in the morning about 4 a clock was come in to the shoals water
and that very suddenly for was sounding every 1/2 fathoms and had 24 and
21 fathoms till that was 1 and then at of the lode 30 fathoms at
10 of the m 5 lode of from Zumbarrath and bearing N 1/2 E by
compass was had from 10 fathoms to 1 1/2 fathoms and that was 2 fathoms
for 2 lode of from the shore you that have 12 fathoms and the north
side but 6 fathoms was taken by compass N 1/2 E this place is called
by the present name that at 2 a clock at night was another out in 30 fathoms
being that it would be Calms and the tide of ebb in hand was another
to the 5 of the water from 3 or 6 lode the water in hand was bearing
by compass N 1/2 E and the land that by the from it bearing N 1/2 W by
1/2 west to the

The 24 day in the morning about 4 a clock was made with the wind at N
E by 1/2 and of the it would be Calms

The 25 day at 2 a clock in the afternoon was come to anchor in 30 fathoms
the 1 land that by the of from the Cape of Monson done bearing by
compass N 1/2 W and the 2 fathoms and the water being but 1 fathom
in on bearing N 1/2 W the 30 fathoms that was had from the 1/2 fathoms of from
to the Arabia shore was from 24 to 4 fathoms

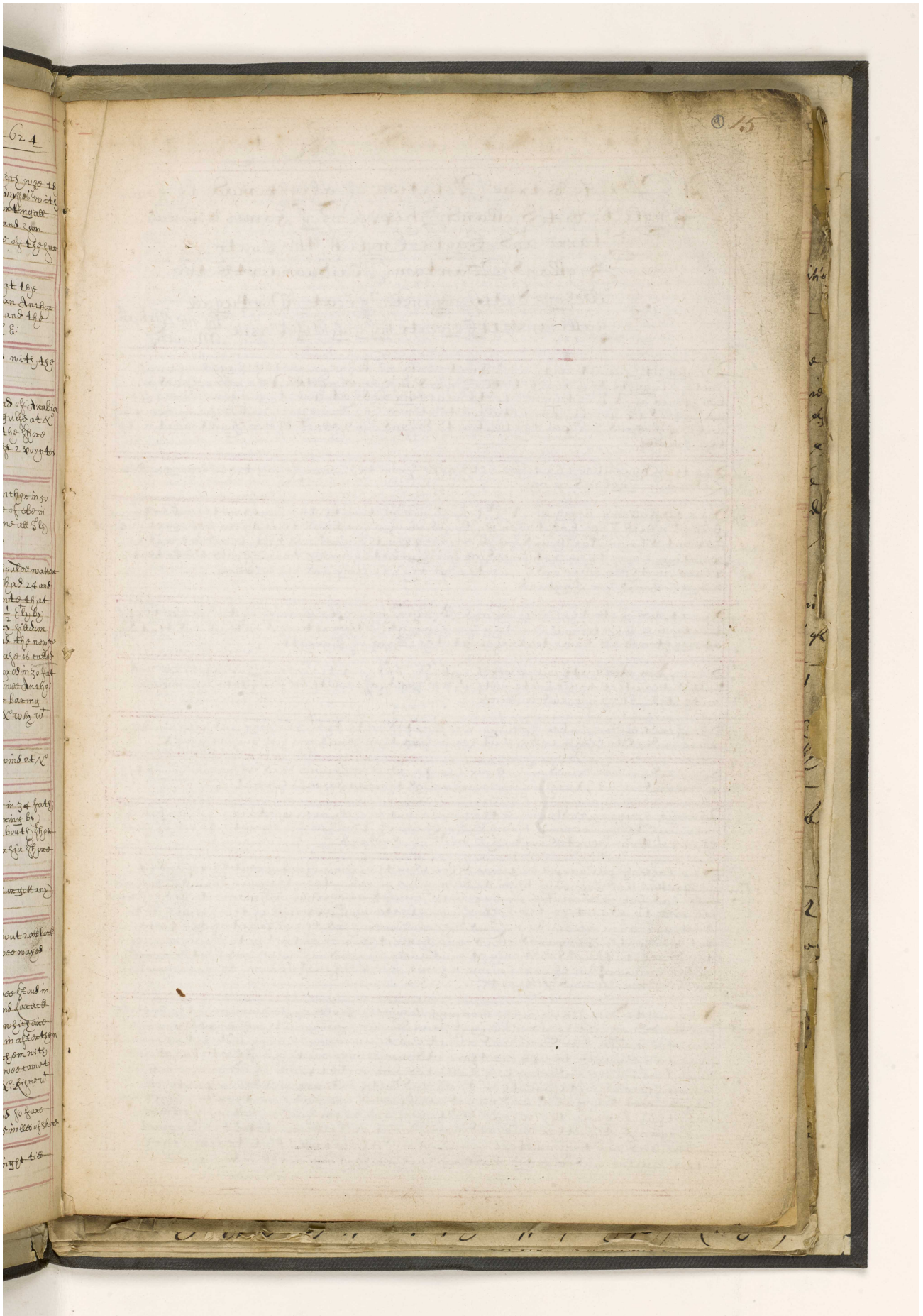
The 26 day in the morning at 10 a clock was found that no water left or yott any
time

The 27 day in the morning being but little wind 5 by was made about 2 a clock
in the morning the 1 land of Ormoo did leave by compass the 1/2 fathoms was made
N 1/2 E and the 1 land of Ormoo N 1/2 W

The 28 day in the morning about 1 a clock the wind being 5 by was found in
the large water that was had between the land of Ormoo and Ormoo
was 24 fathoms till that was sprung 10 fathoms of bearing N 1/2 E and 10 fathoms
next in full 10 fathoms 23 fathoms command of the 1/2 fathoms was found in 10 fathoms
in to 9 fathoms of the 1 land of Ormoo but could not be taken from with
our shot the 1/2 fathoms was sprung of about 1 a clock at night was come to
an anchor in 9 fathoms the 1 land of Ormoo bearing 5 by N 1/2 W compass N 1/2 E

The 29 day about 1 a clock was made another being that no 200 fathoms
of the 1/2 fathoms was found in to 6 fathoms 1/2 and came to anchor from 5 miles of shore

The 30 day was 100 musquitos at night the morning last of the night till
the 31 day and again 100 Calms in the morning



His Majesty's Command

A True Relation of a Fight made by four English & 4 Holland Ships viz James & Francis Starke and Gayls English the South & Holland Hartam Maidenbor & the Welghe Dutch against Great Portugal Gallions, 14 Frigats my Gulph of Persia by me Richard Montre

Inno Comu
1624

Decemr at Surrat with our fleet only in the night when we went along the coast to the sound in search of the Amoy vessels in the night of 14 Novemb the boats were made ready at 10 to go for Amoy & it was agreed by consultation that we should all go for Amoy in company with 4 Holland Ships the boats to defend our selves if we should meet with the enemy

Dec 14 of November 1624 we set sail from the Bay of Surrat for England

Dec 19 following being of 12 of the night we met with the English with 2 Portugall ships which they had taken so that we of a part and that they were set upon & departed from our bound for Amoy upon the night we lost the Dutch and Spanish from them returned all for Surrat fearing they should take us at Surrat in 14 days and so we returned to the Bay of Surrat and the Dutch and the English bound for England

Dec 21 was with the Portugall and Amoy vessels coming of the sea for that the Portugall fleet was making for Surrat & they returned with us and that day at night we were to Amoy at the Bay of Surrat

Dec 24 was with the Portugall and Amoy vessels and sent the one for Surrat river and killed the other to go for the night we were to Amoy with us and the Dutch and the English with us and the Dutch and the English with us

Dec 25 was with the Portugall and Amoy vessels and sent the one for Surrat river and killed the other to go for the night we were to Amoy with us and the Dutch and the English with us

Dec 26 was with the Portugall and Amoy vessels and sent the one for Surrat river and killed the other to go for the night we were to Amoy with us and the Dutch and the English with us

Dec 27 was with the Portugall and Amoy vessels and sent the one for Surrat river and killed the other to go for the night we were to Amoy with us and the Dutch and the English with us

Dec 28 was with the Portugall and Amoy vessels and sent the one for Surrat river and killed the other to go for the night we were to Amoy with us and the Dutch and the English with us

Dec 29 was with the Portugall and Amoy vessels and sent the one for Surrat river and killed the other to go for the night we were to Amoy with us and the Dutch and the English with us

Dec 30 was with the Portugall and Amoy vessels and sent the one for Surrat river and killed the other to go for the night we were to Amoy with us and the Dutch and the English with us

The Blounts of February Anno Domini 1624

5th 22th day the 4th day following we Anchored by the time of Embassadors was come and arrived and
withed his Lutes were Cumberlands ten days after he was returned aboard of our Shippes
the 13th day following having finished 8 leagues was with the Dutch fleet and 3 great Gunnes
we got away to the bound by Gods grace for Sumrat the first being having 5000
we under waye looked and layed out before us we were gave them that but it was myght
more so we would for them up and having over with us it was hid but
to keep them company with a good waye until the next morning and then to have
had another bout with them having a like yoke all night at w^{ch} we were in
to daye and faced 5000 of our myght of our enemy all night.

14th 24th day being the next morning the Dutch Shippes were at face against us
could have them we were afraid for them who upon their coming we concluded to
fight and making all the waye we could before being about 1000
the afternoon time partly by a lanch of the Admirals edge why lay in company with
all his fleet about him and being by his side he was bound for the State of affairs
saying 3 broad sides at him and the rest of his fleet at 4000 ab was could have and
digging and they like mine shot at us to our and saye they were much for the rest of
fleet coming up and we were our looks to give them waye to boxing we
quene we were them the second time we set to it again and so the fight continued
very night one being by us until dark the night and then we left them all together
and tomorrow morning we went the next morning to have the other of our with
them but in the night they altered their course for multate they halve in for 2000
by night means was the fight of them to the next morning being the time
of your going late but they were much of powder and shot being given to
surrender them more the to receive some night we did not permit or growth for
the other fight with the next night and for that cause was gave them over being
to our for Sumrat thus not with standing our amies here was much more than
and that one our side we had 2 English and one Dutch Shippes night would have him
better for to have come out of our company for by these being so far of from the
quiny as they did not only an agreement of want of resolution in them but
a need of powder and shot and in our waye our enemy to the land and delivery of our
nation and thus we have the breaks of our fight night by Gods great blessing
we had the best of us and not unto our felure by the grace of our Lord and for our
Amen &c.

When killed and hurt
in the James 13 // x x
the Tonus had 12 men
the Farr had 3 men
the Eagle had 1 man

When made out of the James
in the 3 Shippes x x x
the first day shot was 3000
the second day shot was 1120
the third day shot was 3600
Sum total 2022

19 From the 10 day till the 19 day but little wind so that we were but little being that
we found a current that set to the west ward for that we made our true
course 8 3 3 leagues latt by Aug 24. So we were at Sumrat from the meridian
of Cape Taurus 1 day 40 miles long. East 4 miles the wind variable

23 The 23 day by the land was found that we had a current that got to the
west ward for that we rather lost than got to any thing.

29 The 29 day at night the Tonus lost sight of us being to go to Sumrat so for us
by reason we were to have the Dutch company

The Tabell for the Month of February Anno 1624 19

Lines	Course	Leagues	Latitude	Departure	Longitude	E or W	Variation	E or W	Winds
15	SSE	4	///	///	///	///	///	///	///
16	///	///	///	///	///	///	///	///	Calms
17	SE by E	12	24 15	45	///	///	///	///	Variabls
18	ESE 1/2 S	22	24 10	54	L 42	///	///	///	WNW
19	ESE	3	24 15	7	L 49	///	///	///	Variabls
20	SWS 1/2 S	6	24 3	West 13	L 36	///	///	///	Variabls
21	N ^o E by E	10	24 19	24	2 100	East	///	///	SE by East
22	South	10	23 24	///	2 100	///	///	///	E by North
23	N East	///	///	///	///	///	///	///	Corant
24	E by S	06	23 10	15	2 15	East	///	///	Variabls
25	SE	07	23 12	10	2 13 L	East	///	///	Variabls
26	E by N 1/2 N	09	23 0	3 12.6	3 11	East	///	///	Variabls
27	ENE 1/2 E	11	23 14	13.0	3 13.0	East	///	///	WNW
28	E 1/2 S by E	32	23 20	13.5	4 10.5	East	///	///	WSW
29	E 1/2 S 1/2 S	42	22 48	10.1	7 10.6	East	///	///	WSW

The Mount of Maxte Anno Domini 1625

- 16th From the last of February to the first of March we were not SE by E: 1 day: 3 miles
Departure 1 day: 16 miles Long: out from the meridian of base: 147 miles
The wind at night south west: this day at 12 a clock was squandered and had 45 fathoms
by 2 and being short of 200: 500 leagues: and being SSE by compass
- 17th The 17th day the 21 hours was from 45 fathoms to 20 fathoms: the 3 days
- 18th From the 18th day to the 19th day our course was SE by E 1/2 S: 20 miles: 20 leagues
Departure 1 day: 21 miles Long: out from the meridian of base: 147 miles
The wind at night SE by E: this day between 200 and 200: 400 fathoms
at 12 a clock: the wind and sea: being by compass East 1/2 S 1/2 S: 100 leagues: of the 18th day
that was had was from 15 to 13 fathoms: 13 fathoms was had when we were short of
the land: but presently we had 23 fathoms: was formed by compass
SE by E: with the wind at the 23rd day from 13 miles to 22: 21: 15: 12 fathoms
and about 12 a clock in the night at the young dawn of the moon we came to
Anthon and tide
- 19th The 19th day we had squalls and flood for 3 miles: W by W: 10: 11: 9: 10: and in the
fathom was tame to another part of 3 miles: red about 10 a clock at night being
that we could not bear our glasses till morning

The Tabell for the Month of March Anno 1625

Lines	Course	Leagues	Latitude	Departure	Longitude	E or W	Variation	E or W	Winds
1	SE by E 1/2 S	42	21 39	L 146	8 152	///	///	///	WSW
2	SE 1/2 S by E	33	20 27	L 117	9 159	///	///	///	WSW
3	ESE 1/2 S	25	20 13	L 113	11 162	///	///	///	WSW
4	E by South	28	19 52	L 121	13 100	///	///	///	WSW

The 8th of Aprile Anno Domini 1625 wee came out of the Galle of Swalley Bound for *Pat* *taunia* 9 day the Gonus parted with us Bound to y^e *Head* *Sea* to releue the Anno for the was in great Degrees

2th The 8th day of this month wee came out of the Galle of Swalley Bound for *Pat* *taunia*

9th The 9th day the Gonus parted and parted with us Bound for the *Head* *Sea* to releue the Anno

13th The 13th day of this month wee sailed from the Galle of Swalley about 1 a clock in the afternoon with the Galle and the Galle of the Galle of the Galle in Company 1 of them bound for Holland and 2 for *Pat* *taunia* about 2 of the clock wee came to Anthon in 10 fathoms about 4 in the morning wee wayes the wind at N^W at a 11 a clock wee came to Anthon againe

14th The 14th day at 1 a clock in the afternoon wee set sayle with the wind at W S with the depth was from 16 to 19 fathoms standing of to the land but you may stand of to 22 fathoms and you be care of all dangers being about the Galle of *Seamon* at 11 a clock at night wee came to an Anthon in 17 fathoms at 5 by S

15th The 15th day in the morning about 6 a clock wee set sayle the depth was from 17 to 17 fathoms being about to the Southward of *Sanct* *Johnes* and at 11 a clock wee came to Anthon in 15 fathoms *Walter*

16th The 16th day in the morning about 6 a clock wee set sayle the wind at S by East the depth was from 17 to 16 and at 12 wee came to an Anthon in 12 fathoms and at 6 a clock at night wee set sayle with the wind at West S W the depth was from 12 to 16 fathoms and at 10 a clock at night wee came to an Anthon in 12 fathoms and at 6 in the morning wee set sayle and stopped suerely at 10

20th The 20th day at 1 a clock in the afternoon at night the wind came at the N^W was being to the N^W word of *Whull* *Tom* 3 leagues you may know it for to the N^W word of *Whull* *Tom* is a great Island and to the S^W word a lowe point the South the wind was from *Whull* *Tom* 11 leagues and the wind of *Whull* *Tom* was from 12 to 7 fathoms being but 5 miles of

21th From the 20th day to the 21st day wee stood along the Coast South South West the depth was from 7 fathoms to 15 fathoms

22th From the 21st to the 22nd day wee stood by some part South and by west from 12 to 17 fathoms *Tom* 5 or 6 leagues of

23th From the 22nd to the 23rd day the course was by some part between the S and the E and by west the depth was from 17 to 32 fathoms being: from some leagues of the wind at N^W this day at 11 a clock wee were at the Galle of *Sea*: *Sea* *Barren*: but you shall know it for to the N^W word there is a great Island and to the South word it is all his land in *Tom* *Tom* and when you are by the part of *Whull* *Tom* you shall have the land till you fall on the *Sea*

24th From the 23rd to the 24th the course was by some part between the South and the South and by west the depth 32 fathoms and standing: for the Galle 26 fathoms 6 leagues of

April 1625 Days		The Month of April Anno Domini 1625	
th	25	From the 24 till the 25 day I went by compass both north and south and by west 4 leagues the depth was from 52 to 25 fathoms	
th	26	From the 25 day till the 26 day I went by compass south 30 leagues. I sent from 25 to 24 fathoms being of from the shore 6 or 7 leagues off. This day our vessel took a small turtle of 25 tumes laden with fish 1 egg was taken out by the gun having three fingers was having a hole made at one end this with them 4 fish gave a boat 20 fathoms in the afternoon was landed and the depth was 11 fathoms was 24 fathoms being from 7 or 8 leagues off and 10 leagues short of Cuba	
th	27	From the 26 day till the 27 day I went by compass south 30 leagues the depth was from 24 to 26 fathoms this day I took a turtle of from 4 tumes laden with salt and fish was taken out and gave 1 egg turtle to the gun being that we could not have any having and being	
th	28	From the 27 till the 28 day was south by compass the made 50 and by east 10 leagues last 7 leagues 10 miles the wind at west for the most parts	
th	29	From the 28 to the 29 day I went by compass south and by east half a point eastward by 80 that I did not have south south east half a point eastward by 20 leagues	
th	30	From the 29 day till the 30 day I went by compass south and by east 50 leagues south south east 21 leagues last by the variation 4 leagues 1 mile	
May 1625 Day		The Month of May Anno Domini 1625	
th	5	The 5 day of this month was parted with the stars and the 20 days before bound for England and Holland	
th	7	The 7 day was taken the pins a drift the night was had taken the 22 day of May laden with fish and wheat was having taken the most part out of the	
th	9	The 9 day in the morning was to the stars and the 20 days before bound for England and Holland	
th	25	The 25 day the wind for the most parts at the SW with much rain and great sea coming out of the SE & SW	
th	29	The 29 day the wind was on the larboard side at 11 ^h till midnight and then the wind came at the SW with much wind and rain so that we took in our main top sail but in the evening in of it was split down from the oar to the gun	

The Tabell for the Month of Maye In no 1625

Days	Course	Leages	Latitude	Departur	Longitud	W ^o or E ^o	Variats	E ^o or W ^o	Winds
1	S S E ⁺	22	4 // // 5	// // //	// // //	// // //	// // //	// // //	W S ^o W with xans and gusts
2	S E S ⁺ E S ⁺ by	25 1/2	5 // // 15	// // //	// // //	// // //	// // //	// // //	W S ^o W with much xans and gusts
3	S E 2 4 S S by	14	2 // // 46	// // 20	6 // // 24	East	// // //	// // //	S ^o West
4	E S E // // //	10	2 // // 46	// // 24	6 // // 24	East	// // //	// // //	S ^o S ^o W ⁺
5	S E by E 1/2 S by	14	2 // // 26	// // 26	7 // // 26	East	// // //	// // //	S ^o W by west
6	E S E // // //	19 1/2	26 // // 08	// // 33	// // //	// // //	// // //	// // //	S West
7	S E by E 3/4 S by	18	0 L // // 34	// // 30	// // //	// // //	// // //	// // //	S ^o W ⁺
8	E 1/2 S by	0	1 // // 32	// // 10	8 // // 49	East	// // //	// // //	Variable
9	S E by E ⁺	16	1 // // 05	// // 40	9 // // 29	East	// // //	// // //	Variable
10	S S by S 1/2 S by	10	// // // 40	// // 40	10 // // 17	East	// // //	// // //	Variable
11	E by N ^o	7	// // // 52	// // 12	// // //	East	// // //	// // //	Variable
12	E by S ^o	7	// // // 40	// // 20	10 // // 49	East	// // //	// // //	Variable with much xans first time with E ^o
13	S by E ⁺	25	// // // 21	// // 10	10 // // 59	East	// // //	// // //	East
14	S by East	15	L // // //	// // 06	11 // // 05	East	// // //	// // //	Variable with xans and thunders
15	East	14	L // // //	// // 12	11 // // 47	East	// // //	// // //	Variable
16	S W by S 1/2 S ⁺	9	L // // 20	// // 12	11 // // 35	East	// // //	// // //	Variable
17	E S E ⁺	6	L // // 26	// // 14	11 // // 49	East	// // //	// // //	Variable
18	East	15	L // // 26	// // 15	12 // // 22	East	0 // // west	// // //	South
19	S ^o W ⁺ W by	06	L // // 40	// // 10	// // //	East	// // //	// // //	Variable with much xans
20	S ^o East	15	2 // // 04	// // 24	13 // // 03	East	// // //	// // //	Variable
21	E ⁺ S ⁺ E ⁺	10	2 // // 10	// // 26	13 // // 17	East	// // //	// // //	Variable with xans
22	E S 3/4 S by	21	2 // // 26	// // 02	14 // // 19	East	// // //	// // //	S ^o by East
23	E S 1/2 S by	10	2 // // 30	// // 34	15 // // 13	East	// // //	// // //	S ^o by East
24	E S E ⁺	16	2 // // 40	// // 45	15 // // 56	East	6 // // west	// // //	Variable
25	S East	150	3 // // 52	// // 04	17 // // 00	East	// // //	// // //	S ^o West
26	E S East	120	4 // // 24	// // 17	10 // // 17	East	// // //	// // //	Variable with and little xans
27	S E by E ⁺	109	4 // // 150	// // 20	10 // // 37	East	// // //	// // //	S ^o W little
28	S E by E ⁺	15	5 // // 00	// // 31	19 // // 00	East	// // //	// // //	S ^o W with much xans
29	S E 1/2 S by	25	6 // // 00	// // 40	19 // // 56	East	// // //	// // //	N ^o N ^o W ⁺
30	S E // // //	43	6 // // 49	// // 59	21 // // 55	East	// // //	// // //	S ^o West
31	East	41	6 // // 49	// // 03	23 // // 50	East	// // //	// // //	N ^o West with much xans

June
1625

The Month of June Anno Domini 1625

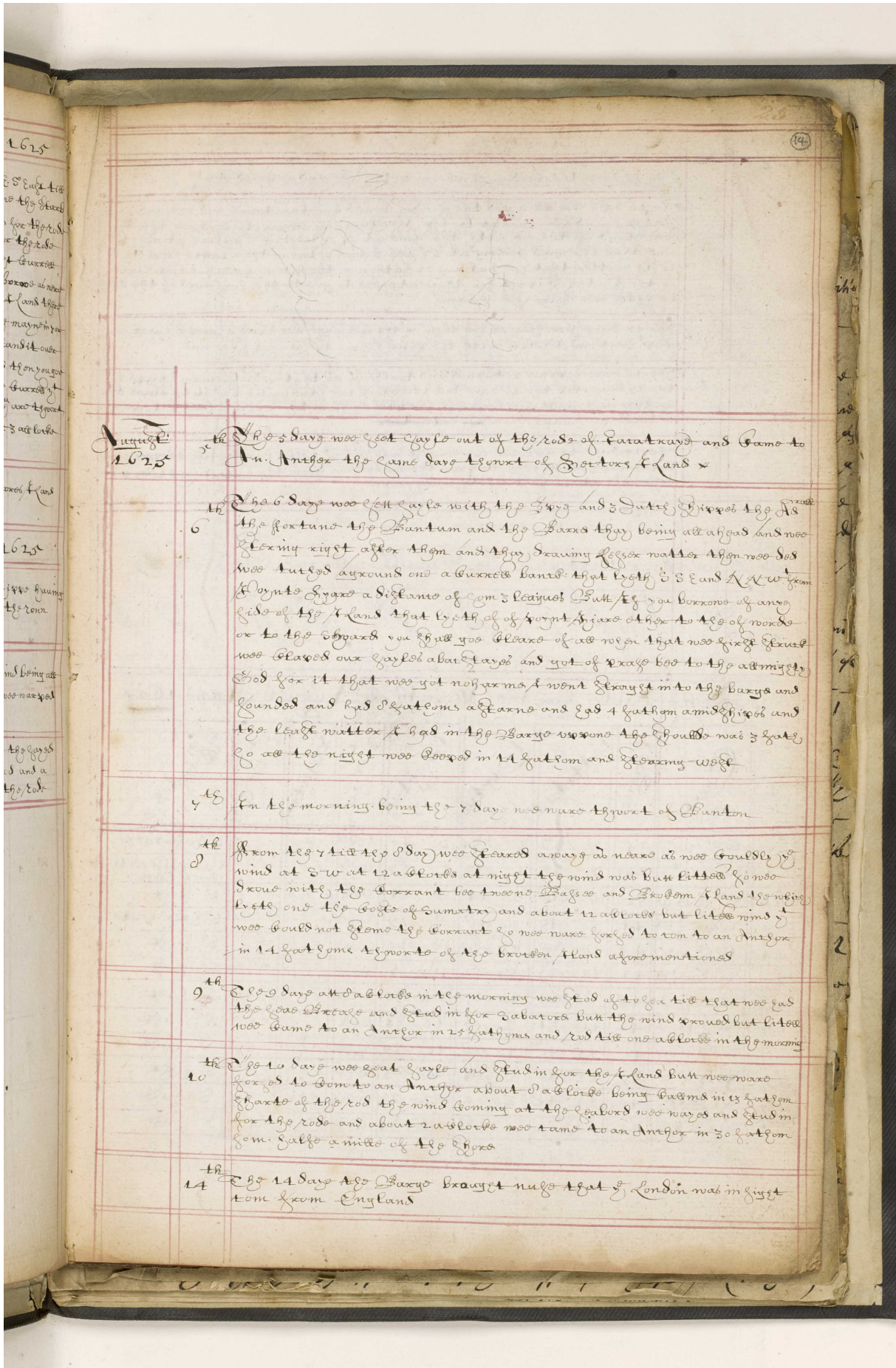
- 1th The 10 day we forced away boathours the East by S. and E. S. East till we had in for Spottoes & Land was left 5 f. lands one the Starke orde 1/2 and 3 one the Carboxe 1/2 and then hallo in for the Red the West: and from 15 to a 11 fathoms for standing for the Red after you are past Spottoes Land you shall go on just towards Land the next you leave one the Carboxe 1/2 you may bookee at need at you please that you go: but when you are past that Land there is a doubt that by the ynder matter: but bookee on the mayne in you shall yem matter: and there is a doubt of the Red that stand it over the Red all the way from the Red to the Westward and then you go to leave of all dangers: there is an notice of Land of white Carboxe it is with the first: that Land having E. N. E. and A. S. W. was the point of the bookee was entered in the day, 10th day, about 3 at look in the afternoon in the yunder matter

The 20 day we wayed from Faratray and went to Spottoes Land to bookee our Ship

July 1625

The Month of July Anno Domini 1625

- 2th The 2 day we had annoynd of Carboxe: of the Shipps having 5 Carboxe & Carboxe alond and 4 Carboxe abasto in the rown and 7 Carboxe in the midships of her
- 4th The 4 day we wayed to tom for Faratray but the wind being at Southwesterly that we were faine to waye out by the waye out to the point of the Land
- 5th The 5 day the wind being at W. N. W. we had of the the Carboxe wind faine and about 1 a clock we had in to the Red and about 1 a clock was entered in the yunder matter in the Red



August
1625

5th The 5 day was got away out of the roads of Paratrayd and came to An. Antige the same day to port of Sigeur's Island

6th The 6 day was left away with the Ship and 2 Duties Dipped the 12th the fortune the Quantum and the Boxes they being all ahead and were blowing right after them and they drawing keeles water they were soe was turned around and a lowered hand that by the 12th 13th and 14th from the point of Sigeur a distance of 100 leagues but by you borrow of any side of the Island that by the 15th of 4 point Sigeur at the 16th of words or to the 17th you shall see clouds of a reason that was first sent was blessed our way about 10 leagues and got of 2000 lbs to the admiral's God for it that was got no way to went Sigeur in to the bay and found and had 2000 lbs of Sigeur and had 4 fathoms amidships and the least water it had in the bay was 10 fathoms and 2 fathoms by at 100 leagues was 14 fathoms and blowing west

7th In the morning being the 7 day was made to port of Sigeur

8th From the 7 till the 8 day was feared away as near as we could by the wind at SW at 12 a clock at night the wind was but little so we drove with the current to the 10 leagues and Sigeur's Island the 11th by the 12th the 13th of Sigeur and about 12 a clock but little wind we could not come to the current so we were forced to run to an Antige in 14 fathoms to port of the brother's Island as before mentioned

9th The 9 day at 12 a clock in the morning was God of the sea that was had the sea Sigeur and Sigeur in for Sigeur's but the wind showed but little and came to an Antige in 25 fathoms and 10 leagues in the morning

10th The 10 day was got away and Sigeur in for the Island but we were forced to come to an Antige about 12 a clock being 13 fathoms from the end of the road the wind blowing at the 14th the 15th was 100 leagues and Sigeur in for the road and about 2 a clock was came to an Antige in 30 fathoms from Sigeur's Island of the 16th

11th The 11 day the Sigeur brought news that London was in sight from England

August
1625

The Month of August Anno Domini 1625

The 15 days the London came in to the rocks and anchored by us

The 16 days was all wayed the London bound for Caraccas and was and 3 Dutch bound for Surinam by the assistance of all my party. God: at this day was found of to lead into the wind at N.W. till 2 o'clock at night and then the wind coming at S.E. was borne between the 2 sails till 4 o'clock matter that was had was 21 leagues in the morning was had left eight of the Dutch ships for they intended to go to the Eastward of the day to Carabona was borne

The 17 days was cleared for them in the morning was dried a large quantity of hay sent in 10000 with the Synod of Sago to Carabona was borne

The 18 days the ship returned and tumbled us at that was a German ship from the 17 days till the 18 days till 12 o'clock was found away S.W. at La Plata the southernmost Saitt Sea bore by N. 11 leagues from the north East land towards my North my maximion was discovered

The 19 days 12 o'clock our course was W.S.W. 14 leagues by day 6 leagues 3 miles departure 30 miles long W from the maximion from the Saitt land 1 day 11 miles the wind at S.E. East with much rain

The Table for the Month of August Anno 1625

Pages	Course	Leagues	Latitude	Departure	Longitude	E or W	Inclination	E or W	Winds
20	W S W	34	7 // 16	1 // 34	2 // 145	West	///	///	S East rayne
21	W S W	26	7 // 16	1 // 72	3 // 157	West	///	///	Variable with much rayne
22	S W by W	150	9 // 10	2 // 104	6 // 104	West	///	///	S East
23	W by S 1/2 S	141	9 // 19	2 // 108	8 // 109	West	///	///	S E by South
24	W S W	144	10 // 30	1 // 150	10 // 115	West	///	///	S East
25	W S W 1/2 S	142	11 // 27	1 // 152	12 // 07	West	///	///	S East
26	W S by S	146	11 // 29	2 // 127	14 // 34	West	///	///	S East
27	W S by S	142	11 // 31	2 // 07	16 // 31	West	///	///	S East
28	W S by S by S	140	11 // 40	1 // 150	18 // 29	West	///	///	S East
29	W by S	139	12 // 10	1 // 154	20 // 23	West	///	///	S East
30	W S by S	140	12 // 12	2 // 00	22 // 23	West	///	///	S East
31	W S by S	144	12 // 12	2 // 11	24 // 34	West	///	///	S East

The Month of September Anno Domini 1625

15th The 15 day of September by consultation his high sent the ship for Sur
Rats with letters of advice to the merchants.

19th The 19 day was the first of the 2 Dutch ships the Fortune and the Swan
and Banham which was had left Company with all.

29th The 29 day in the morning was made the lands being com & Request of and to
the 3 hours of Debate 15 hrs last at the time of the 16 day 24 miles being
12 hrs of departure 30 miles E: Course the 24 hours was N E by E 49 miles
was sailing with and landing the ship 20 hrs more afterwards then it was
by returning the wind & study. At 6 noon was ran out of the coast of Sum
by the current that 20 hrs after Calicut which was found at 12 at low
tides and had 36 fathoms 14 hrs of the variation which was made in 19 hrs last of
16 20 mts and being 12 hrs of the lands it 14 22 mts west to the variation:

30th The 30 day at 12 o'clock was found a long the shore but found by my eyes the
ship to go but the wind at the noonward but later wind at E N E of the shore
about 10 o'clock was found at 10 o'clock 20 fathoms: went in the bay by the
east from and and took the 3 hrs before had taken by the Malabars
the 10 o'clock of the arrival of the Ann's found and the English ships and
sails of Cannon being of 6000 at 12 o'clock at night was ran to an anchor
in 14 fathoms 3 hrs of all 12 at night was run and found of by compass N 10 W wind
south by E

The Table for the Month of September Anno Domini 1625

Days	Course	Leagues	Latitude	Departure	Longitude	E or W	Distance	D or W	Winds
1	W 1/2 N	12	11 14	2 11 4	26 11 38	West	18 11 11	11	S E
2	W 1/2 N	13	11 12	1 11 4	28 11 22	West	11 11 11	11	S East
3	W 1/2 N	14	11 04	2 11 10	30 11 32	West	11 11 11	11	South East
4	W 1/2 N	14	10 11 30	2 11 18	32 11 50	West	11 11 11	11	S E
5	W 1/2 N	14	09 11 34	2 11 03	34 11 53	West	11 11 11	11	S East
6	N 1/2 W	14	07 11 35	1 11 14	35 11 30	West	11 11 11	11	S East
7	N 1/2 W	12	06 11 20	1 11 11	35 11 30	West	21 11 0	11	East
8	N 1/2 W	11	06 11 10	1 11 45	36 11 23	West	11 11 11	11	Variable
9	N 1/2 W	11	05 11 54	1 11 30	36 11 53	West	11 11 11	11	Variable
10	N 1/2 W	12	04 11 50	1 11 29	37 11 20	West	11 11 11	11	Variable
11	N 1/2 W	13	03 11 21	1 11 11	37 11 20	West	20 11 30	11	S E
12	N 1/2 E	12	02 11 06	1 11 2	37 11 10	West	11 11 11	11	S E
13	N 1/2 E	16	01 11 10	1 11 2	37 11 10	West	19 11 30	11	S E
14	N 1/2 E	12	01 11 06	1 11 2	37 11 12	West	11 11 11	11	S W by W
15	N 1/2 E	14	1 11 59	1 11 5	37 11 07	West	11 11 11	11	W 1/2 W
16	N 1/2 E	13	1 11 15	1 11 6	37 11 10	West	11 11 11	11	W 1/2 W
17	N 1/2 E	13	1 11 06	1 11 10	36 11 52	West	11 11 11	11	W 1/2 W
18	N 1/2 E	12	1 11 40	1 11 7	36 11 46	West	11 11 11	11	Variable
19	E 1/2 N	10	1 11 42	1 11 24	36 11 20	West	11 11 11	11	Variable
20	N 1/2 E	25	0 11 30	1 11 31	35 11 35	West	11 11 11	11	N West
21	N 1/2 E	26	0 11 00	1 11 34	35 11 21	West	17 11 30	11	N West
22	N 1/2 E	29	9 11 10	1 11 34	34 11 54	West	11 11 11	11	N West
23	N 1/2 E	25	10 11 20	1 11 30	34 11 24	West	17 11 0	11	N West
24	N 1/2 E	13	11 11 40	1 11 29	33 11 55	West	11 11 11	11	N West
25	N 1/2 E	13	13 11 57	1 11 33	33 11 22	West	11 11 11	11	N West
26	N 1/2 E	13	15 11 02	1 11 10	32 11 04	West	11 11 11	11	N West
27	N 1/2 E	12	15 11 31	1 11 12	31 11 12	West	11 11 11	11	Variable
28	N 1/2 E	12	16 11 04	1 11 50	30 11 22	West	11 11 11	11	N 1/2 E

4 October **THE MONTH of October Anno Domini 1625**

From 12 a clock at night the 30 day of Oct. till the 1st day of October
12 a clock was a cold wind from the N. W. by compass the night was at 12
maye Lat 16 Day 33 min the 30 day was from 13 to 32 fathoms

2th The 2 day was had the wind of of the North and the cold wind to 12 24 hours
went to the N. East of Sabud was to be met in 24 fathoms in the morning at
1 a clock was wind with the wind of of the North

3th The 3 day about 12 a clock was cold as yet the night was at 12 a clock
from 12 a clock the night was to be met in 24 fathoms and none of our
but being that the night did last in the North of the mountains
was could not be seen with the wind of of the North

4th The 4 day being a fine day the wind was at 12 a clock of oblique
and found the water elevated 15 day 54 hrs and 6 fathoms 14 14 hrs of the
depth was from 12 to 24 and in 24 fathoms was to an Antfox from 12
of of the land the 12 day 12 hrs N. E. by N. and S. W. by S at 12 a clock at night
was wind and the wind of the North at 12 a clock at night was to
an Antfox in 24 fathoms from 12 to 24 of the 12 day

5th At 6 a clock in the morning was wind of of the North with the wind of
found by variation that was to be met in 3 fathoms 14 hrs 24 hrs of the
found was 10 fathoms at 12 a clock was to an Antfox in 24 fathoms
of of the land the 12 day 12 hrs of the North from 12 to 24 of the
and found to an Antfox at 12 a clock at night in 24 fathoms 14 hrs of the

6th The 6 day at 6 a clock in the morning was cold having Sun in the North
and by East at 12 a clock was to an Antfox in 24 fathoms 14 hrs of the
could be met in 10 fathoms 14 hrs from 12 a clock the 6 day 12 a clock
7 day was a fine day

7th The 7 day the 16 day 24 hrs the depth was from 16 to 12 fathoms at 6
clock was wind of of the North having by compass East by 20 fathoms
at 12 a clock at night was made with the wind of of the North

8th At 12 a clock the 17 day was elevated 15 day 42 hrs the depth from 12 to 14 fathoms

9th From the 9 day at 12 a clock was wind of of the North at 12 a clock
the 10 day was to the North of the mountains the night was to be met in
was to be met in 4 fathoms of of the North in 4 fathoms and having east of of the

10th From the 9 day at 12 a clock the 11 day at 12 a clock was to an Antfox
at 12 a clock the 12 day having the North of the mountains the night was
at 12 a clock the 13 day was from 12 to 24 fathoms of the North 16 15 day
the 14 day was to an Antfox the 15 day was from 12 to 24 fathoms at 12 a clock
East and by South the 16 day was of of the

11th From the 10 day at 12 a clock the 11 day was to an Antfox at 12 a clock
in the morning the 12 day was from 12 to 24 fathoms 14 hrs of the
at 12 a clock was made with the wind of of the North in 10 fathoms
from 12 to 24 of of the land and having the North of the mountains
but by compass the 13 day was from 12 to 24 fathoms 14 hrs of the
was from 12 to 24 fathoms at 12 a clock at night was made with

12th And at 6 a clock the 12 day was to an Antfox was wind of
wind East and by North that was to be met in 10 fathoms of the
at 12 a clock the 13 day found the North of the mountains 15 day 24 hrs
of the North of the mountains but by compass at 12 a clock was to
to an Antfox and made with the wind of of the North at 12 a clock
being from 12 to 24 of the North of the mountains at 12 a clock
was to an Antfox in 24 fathoms at 12 a clock in the morning
the 14 day was from 12 to 24 fathoms

13th The 15 day at 12 a clock in the morning was cold at 12 a clock in
the morning was made with the wind of of the North 15 day 24 hrs
English and 3 of Dutch but at the first was to be met in 10 fathoms
of the North of the mountains but by compass at 12 a clock was to
that was upon the North of the mountains and the 16 day was to
the wind of of the North and the 17 day was from 12 to 24 fathoms
to be met in 10 fathoms of the North of the mountains and was to
to be met in 10 fathoms of the North of the mountains and was to
Anno the 18 day and the 19 day from the 18 day

November The Month of November Anno Domini 1625

The 3 Days the Anno: went ayround and galloed of the next 4 dye
 The 10 Days the Falcon came out of England and brought in a malle of xige
 with her some so round laden with Pease and Baber nuts
 The 21 Days was tame out of the rods and the Anus and all the water dries
 but only the Anno
 The 25 Days the Ann came out of the rods of Smaroy
 The 24 Days was left saye as: with 6 sayes of Duties bounds for Florida by
 the 30th of Oct at a block at night was had Doamon 5 of us our Bourgo rowe
 by Compa's by the wind at N East
 From a block at night 12 a block the 25 Days our Docto Bourgo mat where
 24 hrs last 19 hrs 56ths Departure w: 1 dye 2 hrs from the maximion of St Johns the
 wind at N East the 24th from a block at night
 The 26 Days Bourgo mat w: 21 dye 12 hrs 10ths last 20 dye 19 hrs Departure
 52 hrs Longt w: from the maximion of St Johns 8 dye 10 hrs 25ths at 10 pm in the
 morning at 7 a block 200 the 26th Land of Saint Duic bearing N E 9 hrs of
 The 27 Days Bourgo mat w: 2 dye 19 hrs last 20 dye 5 hrs Departure 53 hrs Longt
 w: from the maximion of St Johns 2 dye 5 hrs wind at North East
 The 28 Days Bourgo mat w: 26 hrs last 21 dye 5 hrs Departure 42 hrs Longitud w:
 from the maximion of St Johns 4 dye 5 hrs the wind at N East and at North East by East
 The 29 Days Bourgo mat w: 1 dye 15 hrs w: 10 hrs last 21 dye 30 hrs Departure
 20 hrs Longitud w: from the maximion of St Johns 4 dye 25 hrs the wind at N East
 for the night part but little
 The 30 Days Bourgo mat w: 10 hrs 10ths last 21 dye 56 hrs Departure 42 hrs
 Longt w: from the maximion of St Johns 5 dye 12 hrs the wind at N East

December The Month of December Anno Domini 1625

The first of December in the latitude of 22 dye 26 hrs noo had a burrants
 at 12 o'clock w: South West
 The 7 Days at 7 a block in the morning: was made the Land being white
 sandy hills rising in hummocks like a Landes
 The 10 Days the wind was variable the 10:11: and 12 day noo had the wind
 at N w: downe the gulle 80 at noo went nothing to windward
 but not for long
 The 13 Days in the morning noo was the part of Fagus to the Longit
 ud: that made from the maximion of St Johns 12 hrs 10ths with the
 Cape of Fagus was 12 dye 5 hrs the 13th day the 10th day the 10th day a
 space out a block to send to Ammoxons at Puckard at night was Antagon
 in a part from Sun 3 leagues of from the shore and wayes about 2 a block in the morning
 The 14 Days in the morning at 12 a block Sun bearing bore by Compa
 N East by North Sun 4 leagues of the wind being at South East
 The 16 Days was full w: the gulle by Compa N and by West the 16th day was from
 10 to 12 fathoms at a block at night Amox bore 21 by w: Lawcar bore N
 w and by N 4 hrs up the docto mat all night from 5 P to 32 fathoms and
 steering by Compa North w: by West
 The 17 Days Amox bore 12 a block at night the wind came at E S E go w:
 full in for the rods of the land of Compa bore N and by East by Compa
 The 18 Days about 5 a block in the afternoon noo came to an Antagon
 the rods of Compa the Town of Compa bore Compa East by North
 6 hrs bore South West

The Table for the Month of December Anno Domini 1625

Days	Course	Leage	Latitude	Departure	Longitude	Porto	Varial	Porto	Winds
1	W ^N W ^W	24	22 25	1 6	6 18	W ^t	///	///	N ^o N ^o East
4	N ^W by W	54	23 00	2 40	9 06	W ^t	W ^o or 17	///	N ^o East
5	N ^W S ^W by W	24	23 15	/// 15	9 57	W ^t	///	///	N ^o East
6	W ^N W ^W Traus	15	24 00	/// 41	10 38	W ^t	///	///	Varial
7	N ^W by W ^t	12	24 129	/// 29	11 07	W ^t	///	///	Varial
8	N ^W by W ^W Traus	14	24 51	/// 35	11 42	W ^t	///	///	N ^W S ^W E ^W
9	W ^W S ^W	08	24 51	/// 24	12 06	W ^t	///	///	N ^W little
10	N ^W by N ^W Traus	06	25 05	/// 10	12 16	W ^t	///	///	Varial
13	N ^W by N ^o	08	///	///	///	///	///	///	W ^o or 17

The Month of January Anno Domini 1625

The first of January we set sail from our bound for Suvaet with the tonus an Anne and Helen and the route and gave leave of Dutch shipped in company on 1st Jul

4 From the first day till the 4 days at 2 a clock in the morning we had the wind at S. S. E. but not turned from before at 10 a day at 2 a clock in the morning we had the wind at N^o East & we fled away S. S. E.

5 At 6 a clock in the morning the 5 days the point of Our burrie bore East at 6 a clock at night the same day the low point of my m^o to Gaspe East rode bore by compass N^o E and by East 1 los of nos & forced by compass S. S. from weste & turned in morning

10 The 10 days variable wind

24 From 25 days till the 24 days I course was S. S. E. by E. 11 los but by the large nos tone 27 los some we had a current that set to the north west the night current turned with us was strong by compass S. W. made the ship to come here layed 19 los by the large sail but 2 a clock in the afternoon we made the land to the westward of Duis Boony by the compass 3 los and I leaved of the land

27 Dree flocks by compass E. S. E. having a 1/2 do of lead in hand the depth was 20 m 17 or 18 fathoms from Duis till that was made the land of Sant Johns and then we entered by compass N. W. by N. East

20 The 20 days about 2 a clock in the morning we came to Anchor in 16 fathoms the depth was 17 and 18 fathoms and strong by compass North by West East about 6 a clock in the morning we had the wind at E. S. East and came to an Anchor with all the hole fleets at 4 a clock in the afternoon the depth was from the 1 m we wayed till that time we came to an Anchor from 10 to 19 1/2 fathoms

29 The 29 days about 1 a clock at night we wayed and fled us for the rocks of Smalls about 2 a clock in the afternoon we came to Anchor in 15 fathoms having the Southoe muste Abby. trace East so low in the hole of Smalls we found the way to the 1/2 pint of the ship the night came from hantome or Sattalia.

30 The 30 days we all bout English and Dutch went into the hole of Smalls but only the Anne and the same in the 31 days of this month January 1625

The Month of January Anno Domini 1625
The Table for the Month of January Anno 1625

Days	Courses	Leagues	Latitudes	Depart	Longit.	E or W	Sazi	E or W	Winds
6	SE 1/2 S by E	20	25 2	East 53					W N West
7	SE 1/2 S by E	29	24 19	L 15	2	0	East		W S W
8	East	34	24 19	L 42	3	50	East		W S West
9	East	25	24 04	L 10	5	0	East		Variable
10	SE 1/2 S by E	6	23 39	17	5	17	East		S East
11	SE 1/2 S by E	10	23 32	00	5	24	East		S East
12	SE 1/2 S by E	10	23 22	04	5	29	East		Variable Little
13	South	02	23 16						S E Little
14	N E by N	06	23 31	9	5	30	East		
15									
16	E 2 N by N	06	23 33	17	5	33	East		Galmo
17	E by N	05	23 36	14	6	07	East		N N W Little
18	E by N	12	23 22	33	6	40	East		N N W by N
19	SE 1/2 Southly	15	23 03	41	7	21	East		N N W by N
20	SE	21	22 39	50	8	19	East		N N West
21									N N W by N
22	SE 1/2 S by E	40	21 37	L 42	10	01	East		N N W by N
23	SE 1/2 S by E	22	21 17	L 02	11	03	East		N N W by N
24	SE 1/2 S by E	11	21 06	31	11	34	East		N N W
25	E by S 1/2 E	20	20 50	50	12	32	East		N N W
26	SE	14	20 13	31	13	03	East		W N W
27	SE	12	20 00	31	13	34	East		Variable

February The Month of February Anno Domini 1625

8th The 8 days of February was tocke in yedes in to the /Jambes to yoe for England by the holpe of God

March The Month of March Anno Domini

6th The 6 days was had in all our landing and the came was came out of the head of Smalley in to the rode with the Age /Tons

13th The 13 days the falton came out of the hysse in to the rode to us

15th The 15 day the Anne came out of the hysse in to the rode to us

21th The 21 days one of the Dutty shippes came out of the rode and went downe to the Riuer of Surraut

22th The 22 day 2 shippes more of the Dutty came out of the hysse and came to an Anchor by ab the rode at noon /to us

26th The 26 days being Sunday A more of the Dutty came over the bar and at the same time was all moved and went downe to the Riuer mouth but the falton rode still to bring downe the Age Anno boote home went a hysse to bring com provision for the shippes

29th The 29 days was got the merchants a hysse in Duxyo at the Riuer mouth

March
1625

The Month of March Anno Domini 1626

31th The 31 day was and all day lecto being 5 cables with 10 cables of the Dutch Schoon in company with the wind at N^W East was steered a way by compass of the north the tide S w till we came into 14 fathoms and then we tam to an Anchor again and afore getting S and by West the depth and sounding that we had all the way till we anchored in 14 fathoms the afternoon at one of the blots was from 7 fathoms to the depth was 10 in 14. At a blot at night we all made sayes being the tide of ebbe in hand with the wind at S W and by W and at 2 a blot in the morning we anchored in 15 fathoms our depth was from 12 to 15 fathoms

1626

The Month of April Anno Domini 1626

1st The first day was tame to an Anchor at a blot in the morning the depth was from 11 to 15 fathoms the wind at the S W and between 2 or 3 a blot in the afternoon was made sayes being then Dixon East by N and at 11 a blot at night we tam to an Anchor in 10 fathoms the wind between the S W and W

2th The 2 day between 4 or 5 a blot in the morning we made sayes the wind at W and at 10 a blot the same day was tame to an Anchor in 7 fathoms and made sayes again at 4 a blot in the afternoon the depth was from 14 to 15 fathoms the wind at W and at 10 a blot at night we tam to an Anchor in 15 fathoms 3 or 4 cables from the shore

the 23 day Examining the variation 10:30 min the variation

3th The 3 day in the morning at 4 a blot we all made sayes at 10 a blot the same day we tam to an Anchor in 17 fathoms all this day we steered to the westward having the wind at S and by West at 4 a blot in the afternoon we made sayes and tam to an Anchor at 12 a blot at night our depth was from 14 to 15 fathoms the wind at the W and by North so that we lay with our stems between the S by W and the S W

the 24 day in this last the variation 9:30 min

4th The 4 day in the morning we made sayes with wind at W and being but little wind between 9 or 10 a blot we anchored in 10 fathoms at time of Obes: I found the spall to be depth 19 by 4 min and then we had 3 Johns S A S 9 leagues off at 4 a blot in the afternoon we made sayes the wind at the W and by West having to the end of the flood so that our course was all this night by compass S W by S the true course South and by West halfe Westwardly

5th The 5 day 5 o'clk and found 10 by 54 hrs at one a blot in the afternoon we tam to an Anchor being but little wind at 3 a blot in the afternoon being a fine yale all northly we made sayes the depth was 15 fathoms from the time of our getting sayes till 12 a blot

6th The 6 day our course was by compass between the S W and by S and the S W but our true course being 3 cables last 10 by 10 hrs the wind at North West 10 leagues off the Land

7th From the 6 day till the 7 day our course by compass N^W true course S 22 by 17 leagues 3 hrs the wind at N West the 7 day being the 7 day our Carpenter man got my downe in the well to death some sayes was excited and he died before we could get him up and one going downe to help him up was almost dead the name of him that died was Maxton and the other Thomas Colver

8th From the 7 day till the 8 day our course by compass S 1/2 Westwardly our true course S by W 33 by 15 leagues 20 hrs the wind at N W the night the stout our sayes kept us being bound for Molato: to make English Schoon that tam out that way

9th The 9 day our course was by compass S East and by South true course S East 20 leagues last 13 by 9 and 9 minutes

April
1626

The Month of April Anno Domini 1626

1th From the 10 days till the 11 days our course was South and by East at 3 a clock
 in the afternoon we stood along the coast keeping in 17 fathoms of the land
 from 4 or 5 leagues: we anchored in the cove of Enall in 6 fathoms in the
 afternoon being the most convenient by wth there is amount that the ocean
 taller mount Seals that is with 1200 the land it both in a little by so
 much very big land you shall know this land for Somers: from the land
 it matches little an Island and the land in the Country

12th From the 12 to the 13 days we got away in the morning about 9 of the clock
 out of Enall cove where we took in 5 tonnes of water and had 14 bullocks
 for 2 Rixers a pair and 14 fennel for a pair we having departed all
 our birds we chased our course South South west the wind being
 at the North North west

16th The 16 days the Falcon and the Anna parted from us the Anna bound for
 for Saratoya the Falcon for Mexicotan

17th The 17 days Dutch ships parted from us bound for Battavia
 the one was the Quantum and a nextingall of 500 tonnes
 the which they had formerly taken.

21th The 21 days at 12 a clock at night we took the Equenotial
 in the longitude East from the maximion of Saint Johns 6 days 25 mts

Evening
in the last
of 3
Saratoya
in this last
11/13 mts

The Table for the Month of April Anno Domini 1626

Course	Leagues	Departure	Latitude	Longitude	E or W	Variation	E or W	Winds							
13	S S W	1	11	11	11	11	11	N ^o N ^o W							
14	S by E 1/2 E	2	11	32	11	11	11	N ^o N ^o W							
15	S by East	2	3	09	27	11	11	11	N ^o N ^o W						
16	S E by S 1/2 S	3	0	08	09	11	11	11	N ^o N ^o W						
17	S S E	5	11	05	52	3	10	East	11	11	N ^o N ^o W				
18	S S E 1/2 E	3	0	11	34	04	30	4	11	17	East	11	11	N ^o W by N	
19	S S E 3/4 E	3	2	11	40	03	10	7	10	5	11	11	11	N ^o W by N	
20	S S E 1/2 E	3	4	11	41	01	33	5	11	16	11	11	11	11	W th N ^o W gusts
21	S by East	2	5	11	29	N	11	24	6	11	15	11	11	11	W th N ^o W gusts
22	South	3	0	11	11	L	3	06	6	11	25	11	11	11	W by N
23	S by E 3/4 E	2	5	11	24	2	11	12	6	11	19	11	11	11	W S W
24	S S East	1	3	11	14	2	11	10	7	11	03	11	11	11	S W by N
25	E S East	0	5	11	14	2	11	51	7	11	17	11	11	11	variable
26	W S W 3/4 S	1	0	11	25	3	11	00	6	11	52	11	11	11	variable
27	S W by W	2	0	11	15	3	11	35	6	11	10	11	11	11	S S E by N
28	W S W	1	6	11	15	3	11	53	5	11	17	11	11	11	variable
29	S W by S	1	5	11	22	4	11	33	4	11	55	11	11	11	S E by S
30	S W S W	2	4	11	15	5	11	23	4	11	04	11	11	11	S S East

The 28 day we had much rayno and great sea at the S S W but it
 being but little wind the ship ended in to the sea and boote away the most
 parts of the Carved woods in the head

30
 The Month of May Anno Domini 1626
 The 22 days our course was by compass west & true course
 west south west: 2 degrees 7 minutes south by leagues 24 Lat: 20 by 33
 departure 34 1/2 Long: west from the meridian of St Johns
 10 by 34 1/2 the wind at the East North East with many rains
 The 23 days our course was by compass west our true course was
 west south west: 3 1/2 degrees lat: by supposition 29 by 12 the departure
 15 1/2 Long: west from the meridian of St Johns 19 degrees
 3 1/2 miles the wind at 12 at lat at 23 the wind at 10 the wind
 came at the S west some laye at 12 at 24 at 24 at 24 at 24
 at 24 in the morning boomy with winds at the west South west
 we next came the winds came at the South and blowing: 10 1/2
 winds so that we could be with our stems west South west
 the 24 hours we made our course East 9 by departure 24
 East Longitud west from the meridian of Sant Johns 19 by 11 1/2

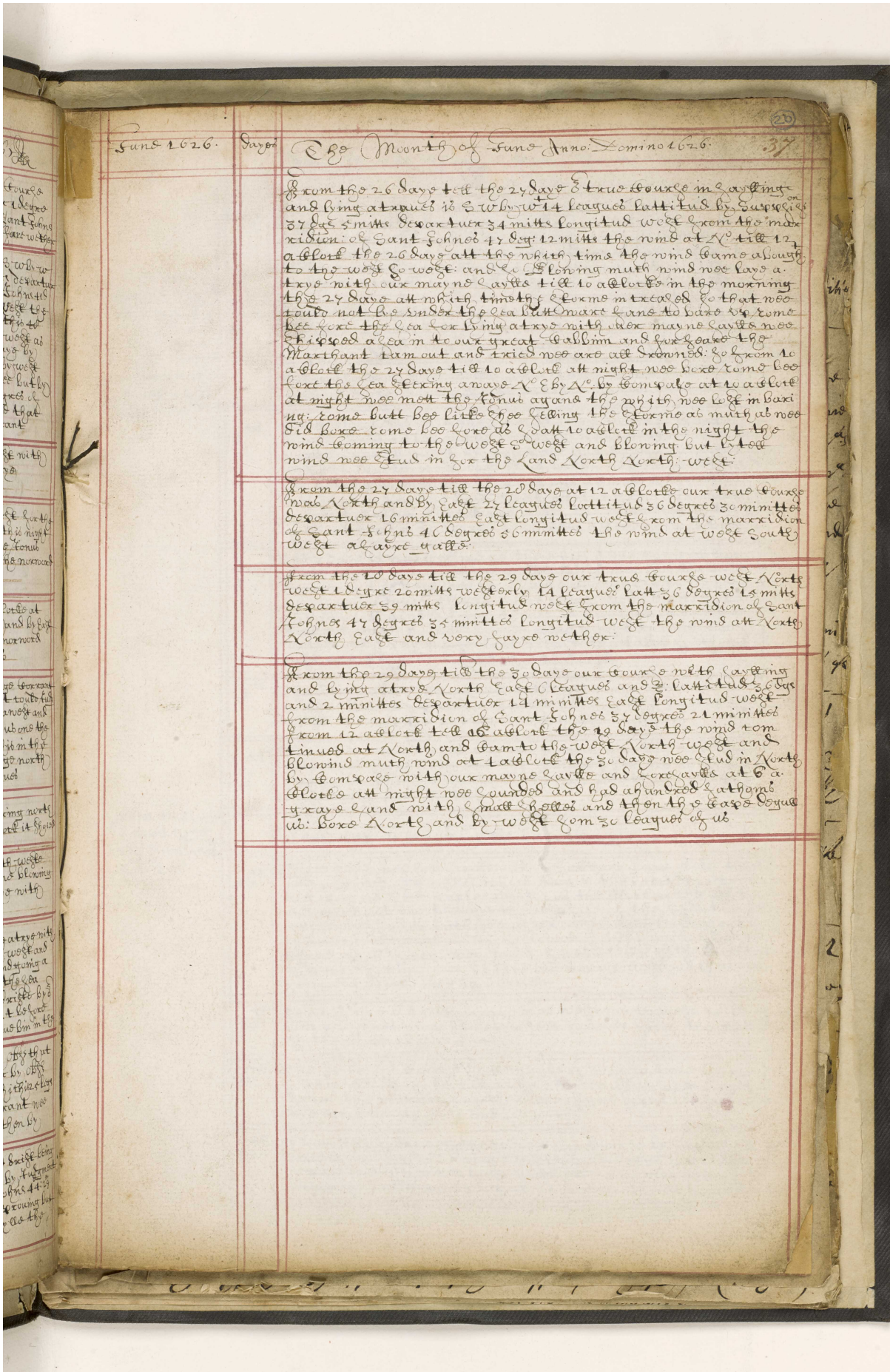
The Tables for the Month of May Anno Domini 1626

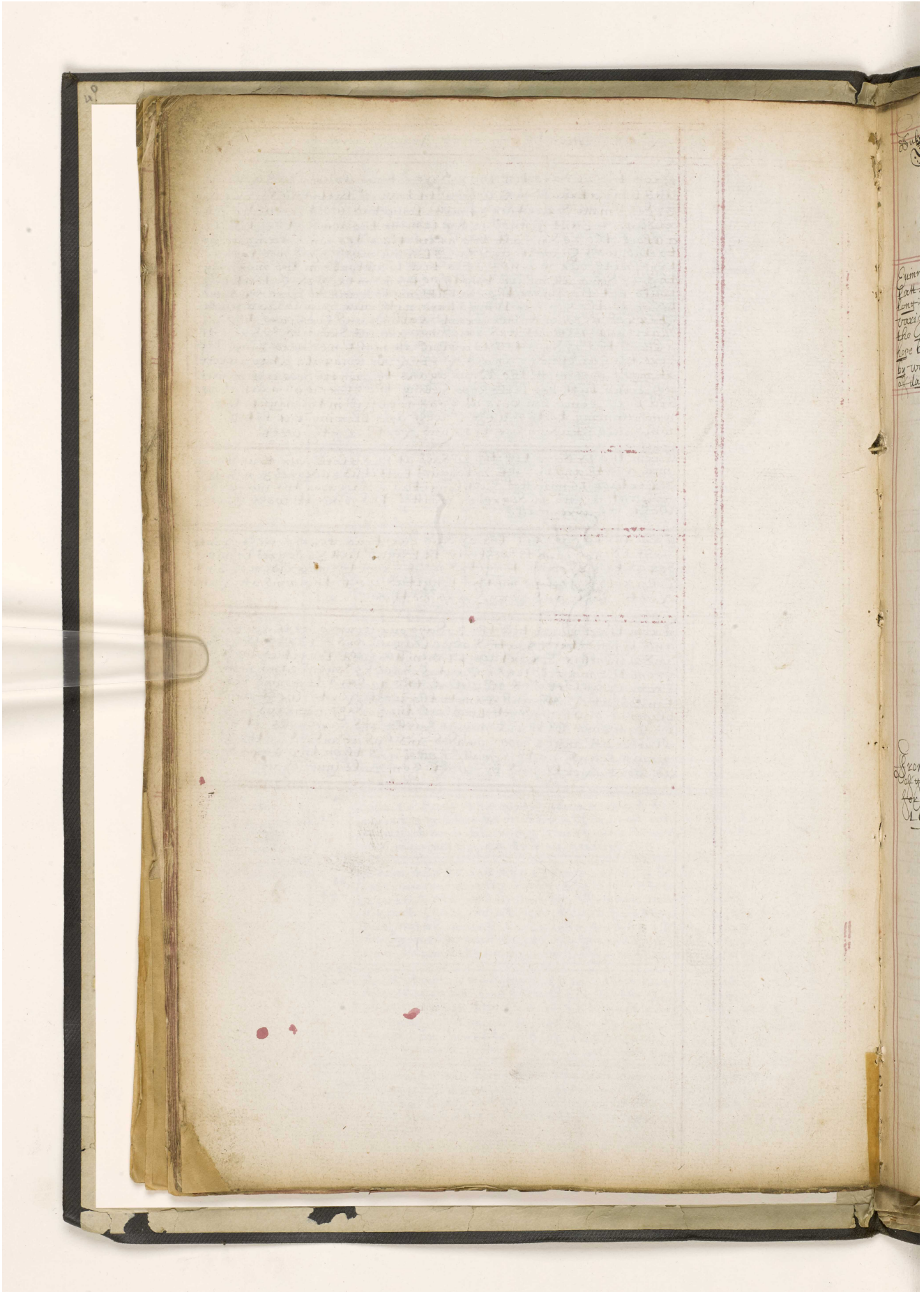
Course	Latitudes	Departures	Longitud	E or W	Latitudes	E or W	Winds
1 S w b s w	21	6 1/2	14 west 38	3 1/2	26	11	S E by S
2 S w 4 1/2 S by E	26	7 1/2	50	48	2 1/2	13,8	S E by S raine
3 S w	20	8 1/2	11,5	1 1/2	30	11	S S E
4 S w by w	10	8 1/2	15	11	15,4	11	S S E
5 S S w	23	9 1/2	14,9	25	12,9	11	S East
6 S by w	32	11	23	29	10	11	S East
7 S w by w	26 3/4	12	13,9	west 45	11	14,5	S East
8 S w 3/4 w by S	31	13	41	1 1/2	10,9	11	S East
9 S w by S	36	15	11	5,9	2 1/2	15,3	S E by S
10 S w 2 1/2 w by S	38	16	20	1 1/2	24	4 1/2	S East
11 S w 1/2 w by S	35	17	34	1 1/2	21	5 1/2	S East raine
12 S w b s 4 1/2 w by S	40	19	00	1 1/2	24	6 1/2	S East raine
13 S S w	41	21	02	1 1/2	46	7 1/2	S S E
14 S w	35	22	11	1 1/2	0,9	8 1/2	S East
15 S w	15	22	44	1 1/2	33	9 1/2	N W
16 W S w	21	23	11	1 1/2	10,2	10 1/2	S S East
17 S w b w 1/2 w by S	10	23	42	1 1/2	45	11	S S East raine
18 S w	30	24	47	1 1/2	0,5	12	S East
19 S w by S 4 1/2 by S	35	25	50	1 1/2	24	13 1/2	S East
20 S w by w	40	26	56	1 1/2	40	15 1/2	E N E raine
21 S w by w	40	28	03	1 1/2	44	16 1/2	N E S W raine
22 W S w 2 1/2 S by S	24	28	33	1 1/2	10,5	18 1/2	E N East
23 S S w	34	29	12	1 1/2	35	19 1/2	E N East
24 East	0,9	11	11	1 1/2	17	19 1/2	South
25 W S w	36	29	53	1 1/2	30	20 1/2	S and East
26 W S w	32	30	29	1 1/2	26	22 1/2	East
27 W 1/2 S by S	30	30	13,8	1 1/2	25	23 1/2	E S E
28 W by N 1/2 S by S	16	30	12,1	1 1/2	46	24 1/2	E S E
29 N W	10 1/2	29	14,2	1 1/2	40	25 1/2	variable
30 W 1/2 S by S	10	29	46	1 1/2	29	25 1/2	variable
31 W S w	20	30	10,9	1 1/2	56	26 1/2	N East

The Summe Ampt. in the Lat of 15. 30
 Variation 14. 30
 The Summe Ampt. in the Lat of 11. 7 mit
 Variation 16. 30 mit
 The Summe Ampt. in the Lat of 13
 Variation 16. 50
 The Summe Ampt. in the Lat of 15. 30
 Variation 18. 39
 The Summe Ampt. in the Lat of 17
 Variation 20. 48
 The Summe Ampt. in the Lat of 19
 Variation 22. 56
 The Summe Ampt. in the Lat of 21
 Variation 24. 10
 The Summe Ampt. in the Lat of 23
 Variation 25. 30
 The Summe Ampt. in the Lat of 25
 Variation 27. 17
 The Summe Ampt. in the Lat of 27
 Variation 28. 44
 The Summe Ampt. in the Lat of 29
 Variation 29. 39

The Month of June Anno Domini 1626

June 1626 For 14 Day Curre amp in the latt of 34 Deg 30 and longitt 11 1/2 variat ation 2 1/2	1	From the last of May till the first of June true course were 25 leagues latt: 30 degrees 11 minutes departure 1 degree 15 minutes longitudo west from the maximion of Sant Johns 27 degrees 46 minutes the winds at the South East were west
For the first day morning amplitud in the latt of 31 1/2 1 1/2 variat 16 1/2 mites	11	From the 9 day till the 11 day our true course was 3 w by w h alle a point South by 26 leagues latt 35 deg 11 mites departure 59 mites longitudo west from the maximion of Sant Johns 19 22 mites course compass was west 4 w and by w by west the wind being but litle and variable this 10 hours the 10 was met with a strong current that set South west as found by my judgements and latt for noon steering away by compass 4 w by w and w 4 w made but a 3 w and by west h alle a point South by way the which could not be but by a current that set 5 by for noon having but 10 degrees of variation and steering with a current that set South that we had made so much South by way by the current
	12	The 12 day at 12 a clock the wind came at the west with much wind and having and was so that was lay at sea with our mayne sayle
	13	The 13 day the wind being at the west South west for the most parts blowing much wind and a great sea this night about 2 a clock in the morning was lost sight of the land the wind coming at the 4 west and was burmy to the northward and thays to the Southward
	14	The 14 day the winds blowing but litle at 12 a clock at night att night time the wind came at the South and by day but blowing but litle winds was found my to the northward and thays to the South from 3 leagues to the northward of us
16 Curre amp latt 35 1/2 longitudo from the last of good hope 1 1/2 variat 6 Deg 30 mites	16	The 16 day in the latt of 34 Deg 30 was had a strong current that set to the Southward and at noon my judgement to be 3 leagues for noon steering w north west made but a west and by South 4 day 34 South by the 34 current took us on the broad side and made us march 30 South by way. This in the morning was made the land being 3 by 3 and bearing north East and by north being of the land from 10 leagues
17 Morning amplitud in the latt and longitudo of 44 1/2 variation 6 1/2 mites	17	This 17 day was for the land in the morning bearing north East by compass 10 leagues of a ground Symmett it shewd
	18	The 18 day the wind came up at the west South west about 3 a clock in the afternoon at which time blowing much time blowing much wind was lay at sea with our mayne sayle till 12 a clock
	19	From the 18 till the 19 day and the 19 day was lay at sea with our mayne sayle with the wind at west north west and North west and by north blowing much wind and some a great sea so that was to be hard by the wind the sea but with much lulls and to the 19 day our drift by judgment was South East and by South a point 10 leagues our beam then by our judgements was 3 leagues from us
	19 1/2	Lattitudo of 34 degrees 43 minutes but found by the 19 at the current had helped her to the Southward for by the was made in the latt of 36 degrees 50 mites the which is 16 2 South at the same time by the help of the current was made our drift which 11 leagues South by the 19 by judgment it should have allowed for
	20	From the 19 day till the 20 day our way and drift being brought upon a draught by 16 1/2 leagues latt: by judgment 37 20 long: west from the maximion of Sant Johns 44 23 the wind at 12 a clock at night was w and blowing but litle wind and having made our mayne sayle the which but 4 a clock in the morning was set





July 1620

The Month of July Anno Domini 1620

21

Running amoy
Latⁿ 34 1/4
Longⁿ 30 1/2
Waxⁿ 0 1 1/2
the Cape of wood
hope burnt
by west winds
of day the 4th

1st From the last of June till the first of July the course being at sea with our maine sayle & masted with the fore sayle and maine sayle South 1 League Latitude 36 Degrees 16 Lines mits Longitude west from the meridian of Saint Johns 57 Degrees 21 mits Longitude west the wind at the west North W

4th From the 3rd till the 4th daye the course North 16 leagues Latⁿ 34 Degrees 55 mites this daye about 6 a clock in the morning we made the land beinge Cape Halls bearing North of us Com 9 leagues of this land is by land to the westward and to the eastward it rises all in summits all at 11 a clock we made the Cape of Good hope bearing North and by west Com 11 or 12 leagues of

5th From the 4th daye till the 5th we steered away by Compass North North East 14 leagues in the morning we lost the taback bearing North North west by Compass but havinge but little wind and all North west we steered to the westward the westward sea bearing us in to the shore at one a clock in the afternoon we steered in for the baye the longitude from the meridian of Saint Johns till 4th hour mits the meridian of the Cape of Good hope is 30 Degrees 41 mites a bearing to the land

7th The 7th daye it was calm at the night time the wind came at South west to us at our sayles and steered in for the baye at the morning of the 8th daye we see a large Coming in to the baye the night was a Dutch shippe which came from Mozambique and had bin 1 month in the baye at 6 a clock at night it got to us with no wind to us we were forced to anchor in 20 fathoms water the Sunne laye lowe South East the taback South and by East and Summit of Land North west

8th The 8th daye about 12 a clock in the afternoon we came to anchor in the baye in 7 fathoms water duringe the Sunne laye South west and the lowe spots to west half a North

9th The 9th daye we layed 2 sayles Coming for the Cape the white was the Exchange and the blacke for which came from England the Exchange bounde for Battavia and the blacke for Swat

From the Cape of wood here for England 1620

They have we get sayle from the Cape for England

17th The 17th daye we set sayle out of Saldans baye with 188 Tons and a Dutch shippe the white came in the same daye that we did we set sayle about 2 of the clock in the afternoon and went out one the north west side of the Island of Saldan where we had 10 fathoms water and in our last 10 fathoms the wind beinge at South East out of the baye to Com the Island of Myquon was halled of west till 4 by the clock at the night time we steered our course west north west from Saldans till 12 a clock

18th The 18th daye the course was west north west 10 leagues Latⁿ 33 Degrees 32 mits Departure 50 mits from the meridian of the Cape of Good hope

30th The 30th daye the course by Compass N W by W the true course N W by W 1/2 W Latⁿ 22 Dgs 21 mits Departure 60 mits Longitude at from the meridian of the Cape of Good hope 12 Degrees 10 mits the wind South East and by South

31st From the 30th daye till the 31st daye our course by Compass N W by W the true course N W by W 1/2 W Latⁿ 25 Dgs 21 mits Departure 53 mits Longitude at from the meridian of the Cape of Good hope 13 Degrees 21 mites till at 3 a clock 31st

August
1626

The Month of August Anno Domini 1626

The 6 days of the month at 5 a Clock in the Morning we made the Land of Santa Lena bearing by Compass East North East 4 leagues: so we stayed our Anchor there 4 hours and thus for the Land but we bore by to the Westward at the Land and the wind bore at the East South East so that we lay but North East with our Anchor borne that we could not see the Land nor chased our Anchor North West and by North

The Table for the Month of August Anno Domini 1626

Days	Course	Leagues	Latitude	Departure	Longitude	Et of W	of Societ	of of W	Grinds
1	N ^o W 3/4 N	26	20 // 124	L // 2	14 // 23	W ⁺			S ^o E by S
2	N ^o W 1/2 W	21	19 // 141	// // 10	15 // 11	W ⁺			S ^o E by S
3	N ^o W 1/4 N	23	18 // 155	// // 14	15 // 50	W ⁺			S ^o E by S
4	N ^o W	35	17 // 140	L // 15	17 // 13	W ⁺			S ^o E by S
5	N ^o W 1/2 W	34	16 // 121	L // 09	18 // 32	W ⁺			S ^o E by S
6	W N W	30	15 // 147	L // 22	19 // 54	W ⁺			S ^o E
7	N ^o W by N	30	14 // 145	// // 50	20 // 44	W ⁺			S ^o E
8	N ^o W by N	37	13 // 112	L // 10	21 // 46	W ⁺			S ^o East
9	N ^o W by N	35	11 // 147	// // 59	22 // 45	W ⁺			S ^o East
10	N ^o W by N	35	10 // 21	L // 7	23 // 45	W ⁺			S ^o East
11	N ^o W by N	32	09 // 153	// // 53	24 // 30	W ⁺			S ^o East
12	N ^o W 1/2 N	32	07 // 145	// // 59	25 // 37	W ⁺			S ^o East
13	N ^o W 3/4 N	26	06 // 147	// // 52	26 // 29	W ⁺			S ^o East
14	N ^o W	24	05 // 156	// // 51	27 // 20	W ⁺			S ^o by East
15	N ^o W 1/2 W	32	04 // 140	L // 10	28 // 28	W ⁺			S ^o East
16	N ^o W	40	03 // 123	L // 25	29 // 53	W ⁺			S ^o East
17	N ^o W 3/4 N	36	1 // 156	L // 03	30 // 56	W ⁺			S ^o East
18	N ^o W 1/2 N	32	South 45	// // 59	31 // 55	W ⁺			S ^o East
19	N ^o W 1/4 N	32	South 27	// // 05	32 // 20	W ⁺			S ^o East
20	N ^o W 1/2 N	40	2 // 140	L // 10	33 // 30	W ⁺			S ^o East
21	N ^o W 3/4 N	36	3 // 128	L // 07	34 // 45	W ⁺			S ^o East
22	N ^o W by N	35	4 // 56	// // 50	35 // 03	W ⁺			S ^o East
23	N ^o W by N	3 // 6	11	// // 50	35 // 53	W ⁺			S ^o East
24	N ^o W by N	15	6 // 149	// // 25	36 // 10	W ⁺			S ^o S ^o West
25	N ^o W by N	6	7 // 04	// // 10	36 // 20	W ⁺			S ^o S ^o West
26	N ^o W by N	33	8 // 126	// // 55	37 // 23	W ⁺			S ^o S ^o West
27	N ^o W by N	27	9 // 136	// // 45	38 // 10	W ⁺			S ^o S ^o West
28	N ^o N ^o W	11	10 // 106	// // 15	38 // 21	W ⁺			S ^o S ^o West
29	N ^o N ^o W	15	10 // 140	// // 16	38 // 37	W ⁺			S ^o S ^o West
30	N ^o W 1/2 N	32	12 // 130	L // 10	39 // 30	W ⁺			N ^o E
31	N ^o N ^o W	36	13 // 45	40	30 // 10	W ⁺			N ^o E

This table for the Month September Anno Domij 1626

Days.	Course	Leagues	Latitude	Departure	Longitude	or L.	Variation	or L.	Winds
1	N ^o N ^o W ^t	23 1/2	14 // 141	// // 26	45 // 139	W ^t	// // //	// //	Force
2	N ^o W ^t	17	15 // 120	// // 36	46 // 115	W ^t	// // //	// //	N ^o E by E
3	N ^o N ^o W ^t by W ^t	32	16 // 146	// // 42	46 // 54	W ^t	// // //	// //	N ^o E by E
4	N ^o N ^o W ^t by N ^o	31	18 // 111	// // 37	47 // 43	W ^t	// // //	// //	N ^o E by E
5	N ^o W ^t by N ^o	31	19 // 129	// // 50	48 // 24	W ^t	// // //	// //	N ^o E by E
6	N ^o W ^t by N ^o by N ^o	32	20 // 50	// // 51	49 // 11	W ^t	// // //	// //	N ^o E by E
7	N ^o W ^t by N ^o	22	21 // 39	// // 44	49 // 58	W ^t	// // //	// //	N ^o East
8	N ^o W ^t by N ^o	20	22 // 29	// // 55	50 // 54	W ^t	// // //	// //	N ^o East
11	N ^o W ^t by N ^o	30	23 ^{South} 44	// // 15	51 // 46	W ^t	// // //	// //	N ^o East
12	North	23	24 // 55	// // //	// // //	// // //	// // //	// //	East
13	North	25	26 // 100	// // //	// // //	// // //	// // //	// //	East
14	North	20	27 // 108	// // //	// // //	// // //	// // //	// //	East
15	North	5	27 // 23	// // //	// // //	// // //	// // //	// //	East
16	N ^o by W ^t	16	28 // 110	// // 19	51 // 55	W ^t	// // //	// //	vari ^o m ^o mag ^o
17	N ^o N ^o W ^t by W ^t	09	20 // 55	// // 10	// // //	// // //	// // //	// //	N ^o E by N ^o
18	N ^o N ^o East	27	29 // 149	// // 31	// // //	// // //	// // //	// //	W ^t by N ^o W ^t
19	N ^o E by N ^o East	22	30 // 120	// // 53	1 // 24	// // //	// // //	// //	N ^o W ^t quarter
20	N ^o E by N ^o East	10	30 // 152	// // 40	2 // 12	East	// // //	// //	variable
21	W ^t by N ^o by N ^o	17	31 // 33	// // 49	50 // 32	W ^t	// // //	// //	North
22	N ^o W ^t by W ^t	12	31 // 27	// // 26	50 // 50	W ^t	// // //	// //	N ^o by E
23	N ^o N ^o W ^t	4	31 // 30	// // 5	51 // 03	W ^t	// // //	// //	S ^o S ^o E
24	North	0	32 // 5	// // //	// // //	// // //	// // //	// //	variable
25	N ^o E by N ^o East	5	32 // 4	East 4	// // //	// // //	// // //	// //	variable
26	N ^o by W ^t	0	32 // 26	// // 19	51 // 10	W ^t	// // //	// //	S ^o S ^o E
27	N ^o N ^o W ^t	4	32 // 37	// // 5	51 // 15	W ^t	// // //	// //	W ^t by N ^o W ^t
28	N ^o W ^t by W ^t by W ^t	13	32 // 50	// // 32	51 // 45	W ^t	// // //	// //	N ^o N ^o East
29	N ^o W ^t by N ^o by N ^o	29	33 // 45	1 // 00	52 // 15	W ^t	// // //	// //	N ^o E
30	N ^o W ^t by N ^o	26	34 // 50	// // 43	53 // 20	W ^t	// // //	// //	N ^o E by E

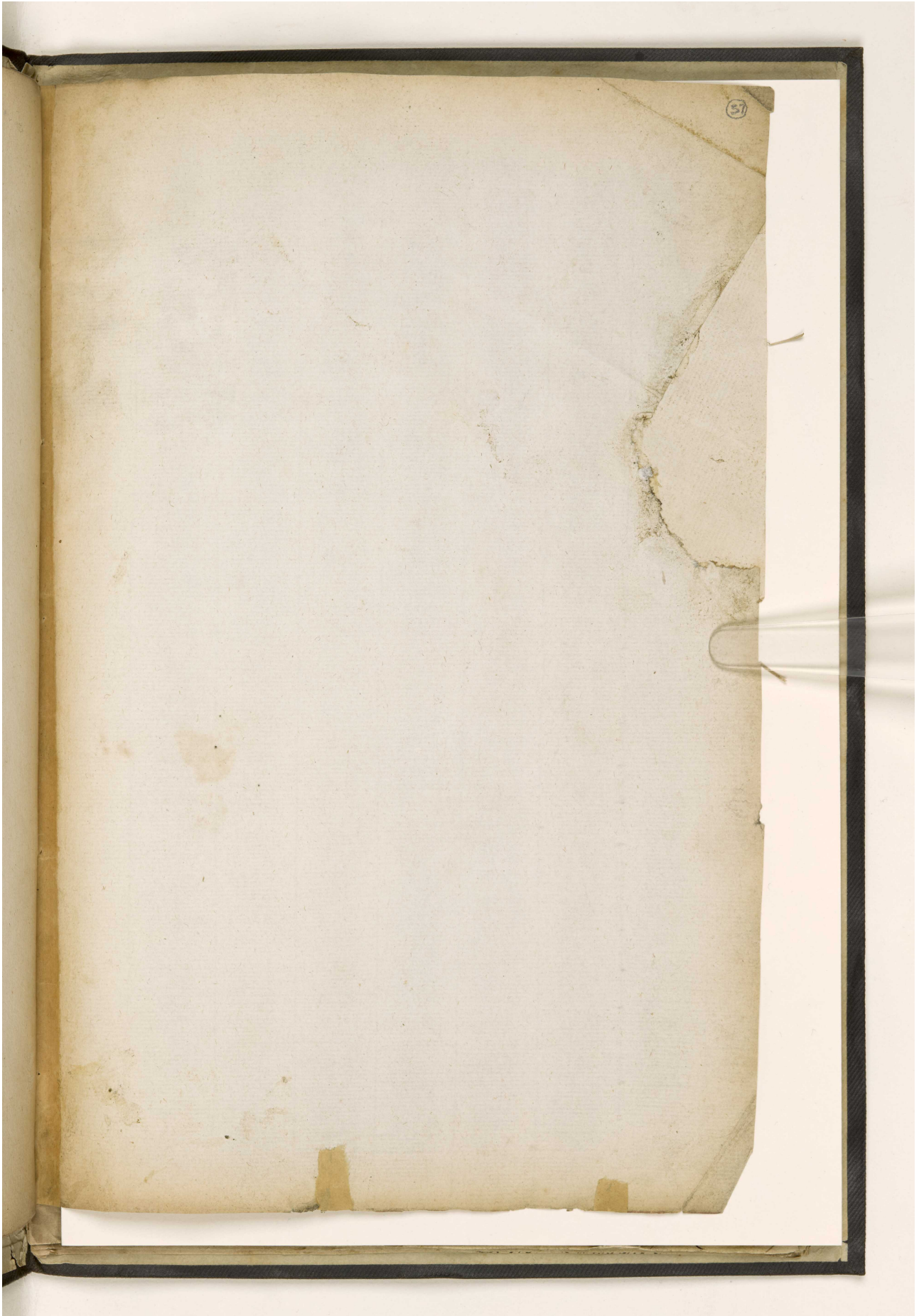
The 27 day in the morning was good alays the night was bad but the
Arab the first of facts for 50

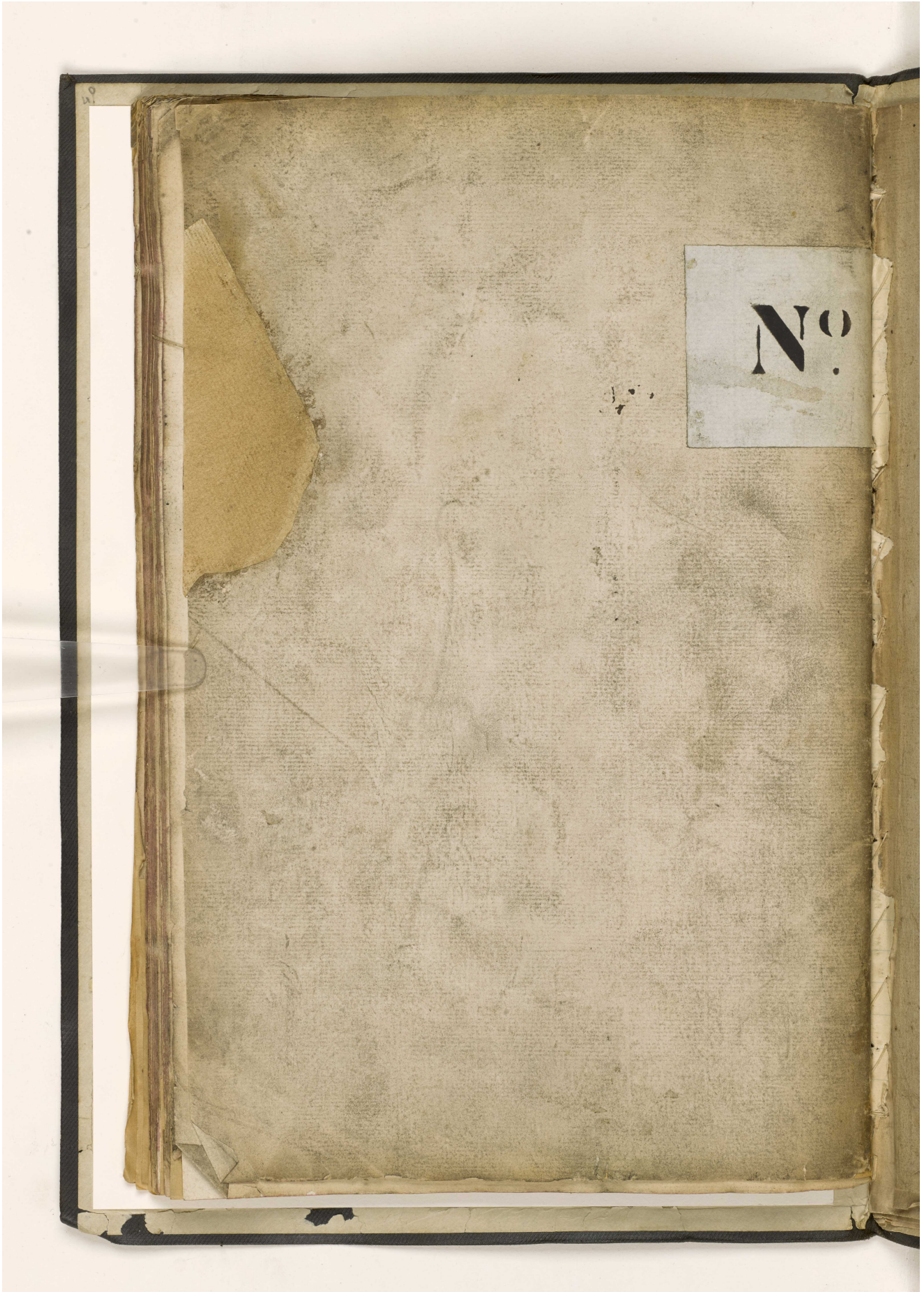
The Tables for the Month of October Anno Domini 1626

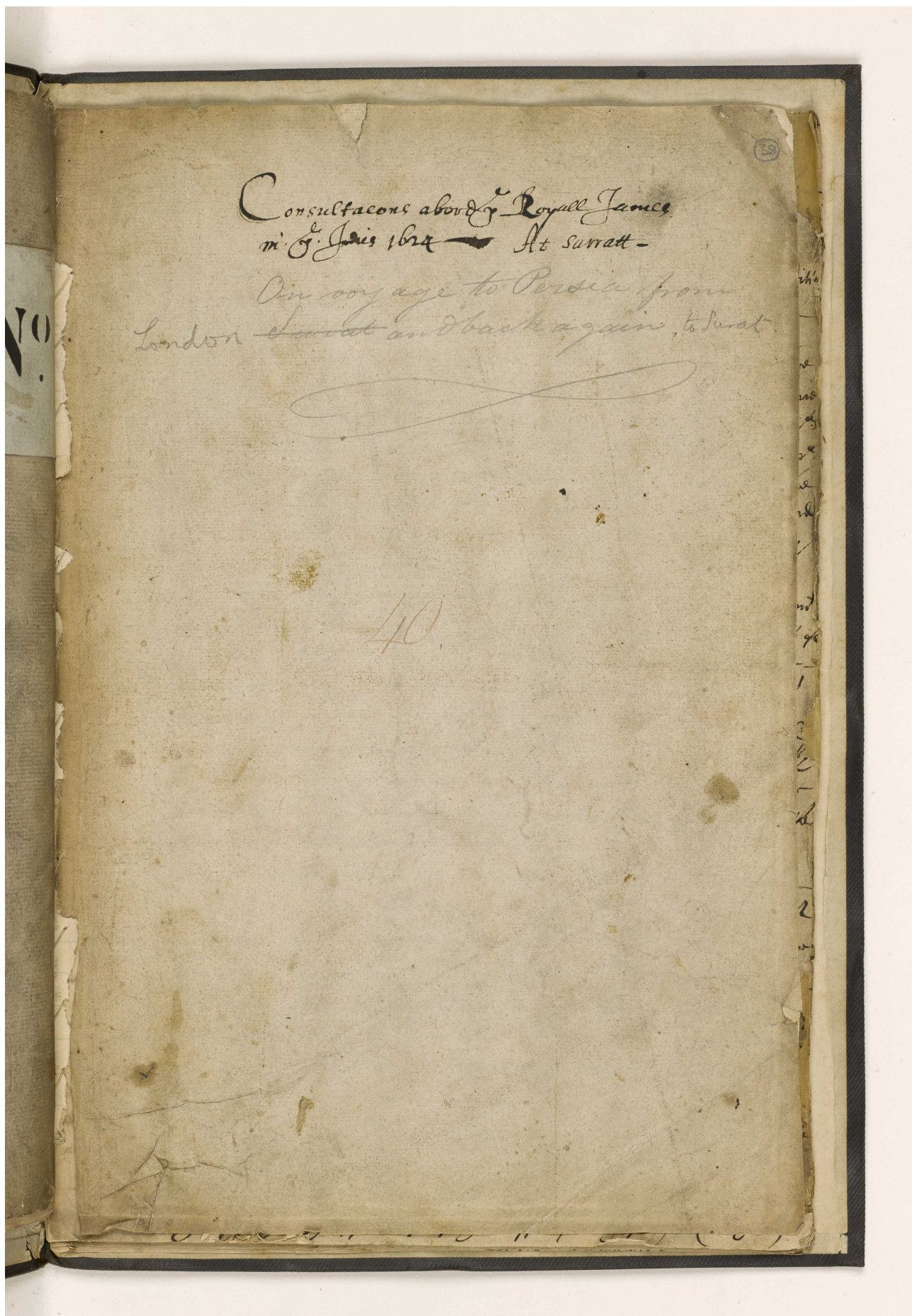
Days	Course	Leagues	Latitude	Departure	Longitude	East or West	Variation	East or West	Windes
1	N ^o W ^o N ^o	17	35 17	77 52	54 10	East	11 11	11 11	Saxiblow
2	N ^o N ^o E ^o	23	36 120	East 24	11 11	11 11	11 11	11 11	S ^o E ^o quarter
3	N ^o E ^o N ^o	15	37 14	11 26	11 11 50	East	11 11	11 11	S ^o S ^o East
4	N ^o E ^o E ^o	33	38 11	11 21	21 11 11	East	11 11	11 11	South S ^o East
5	N ^o E ^o E ^o	43	39 11	11 54	41 11 5	East	11 11	11 11	S ^o S ^o E ^o to W ^o N ^o
6	East S ^o N ^o	35	39 16	11 45	51 140	East	11 11	11 11	N ^o by west mo ^o
7	N ^o E ^o E ^o	11	11 11	11 11	11 11 11	11 11	11 11	11 11	11 11 11 11
8	N ^o E ^o E ^o	43	40 59	11 46	21 152	East	11 11	11 11	S ^o west 11
9	N ^o E ^o E ^o	31	41 11 33	11 26	41 11 10	East	11 11	11 11	N ^o west 11
10	N ^o E ^o E ^o	30	42 11 20	11 16	51 134	East	11 11	11 11	N ^o W ^o by W ^o mo ^o
11	N ^o East	26	43 11 31	11 35	61 130	East	11 11	11 11	N ^o W ^o S ^o S ^o E ^o
12	E ^o S ^o E ^o	9	43 11 25	11 125	61 135	East	11 11	11 11	W ^o W ^o S ^o W ^o N ^o
13	N ^o E ^o E ^o	11	43 11 42	11 120	71 125	East	11 11	11 11	Saxiblow 11
14	N ^o E ^o E ^o	41	43 11 17	11 35	81 130	East	11 11	11 11	S ^o S ^o E ^o mo ^o
15	N ^o E ^o E ^o	36	46 11 04	11 29	101 127	East	11 11	11 11	S ^o S ^o West mo ^o
16	N ^o E ^o E ^o	47	47 11 29	11 54	121 121	East	11 11	11 11	S ^o S ^o West 11

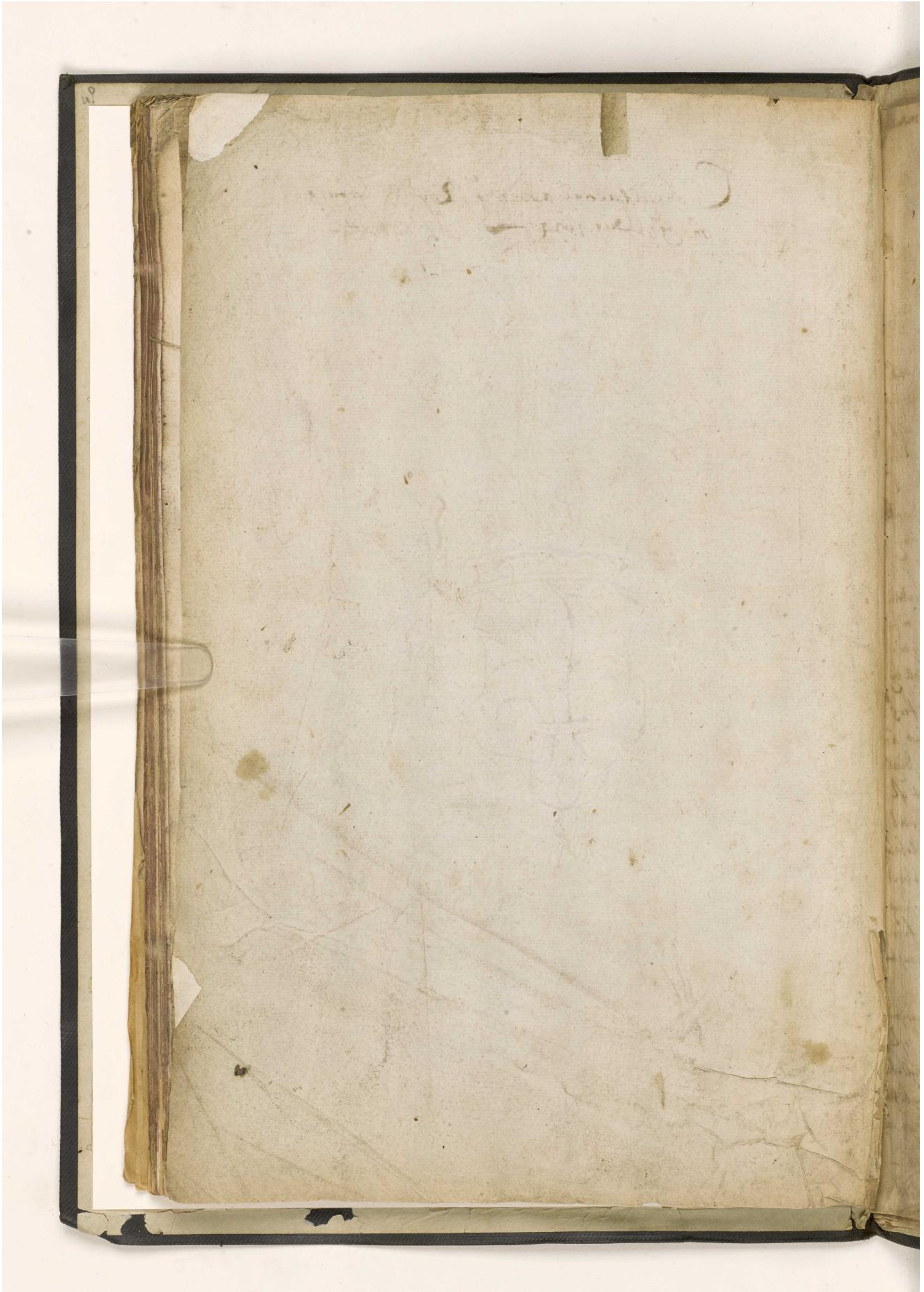
The 6 day wee made the flowers and Corals in the morning about 7 at lark being of Sun 16 leagues and bearing E^o N^o East the longitude that Amado from the maximion of the Cape of Good Hope to E^o see with the maximion of flowers and Corals according to Playne 40 11 26 this morning wee made with a duty of 11 Exdam aman of waxe.

The 12 day at night about 7 at lark the wind came at S^o N^o W^o by N^o and blew by night wind and so suddenly in a gust that wee had nott any tyme to hand in our gayle: and in tarrying in of the flowers wee behitt and in lowering our mayn gayle the light and y^e beate becke and y^e mane that the force becke so the waxe force to by a gol at myt see at lark the 13 day the force of the wind luffed but 3 honore









A book of Consultations

held aboard the Royall James
on the 2nd of April 1624

At a Consultation held aboard the Royall James the 2nd of April 1624
where present the said ships names are recorded by writing
Capt. John Weddell Admirall and Capt. Commander of the
said vessels, namely 4 Ships and 2 pinnaces, now by Gods grant
bound for the East Indies, having upon at the said time to sundry
Commanders, and Mr. Under-tynt, a Copy of the said Com^{ds}
Commission & Instructions for the Fleet, better keeping of the same
together, And also certayne orders for government in the Voyage, the
Com^{ds} directed the way was to steer to the Grand Canaries, & And
approved the Advice of the Consultation, that Henry Westley
should be Register

In the next place it was resolved by Capt. Weddell for the entertainment
of 2 sufficient men, the 2nd of the pinnaces to performe the place of
Purser and Steward in the same, wherunto yt was agreed, that
Richard Hakeby should goe in the said Ship and Thomas Brooker
to goe in the said Schooner, to be registered and accounted for
exactly in manner and forme as the said places require, & likewise
an account and in the account, may be by the said record of their
proceedings and expence of provisions at any time, unto the said
Commanders for better satisfaction of the said Employers

It was also ordered at the said Consultation, that in regard
many of the said Ships were very much laden & by reason thereof
in the said ships subject to many diseases, by the danger of
the said ships and others, the said Com^{ds} having sufficiently
known every Ship to procure and furnish the same in the said voyage
and were of the opinion, that the said Purser of every Ship, should supply
such man's want as hee to prevent further inconveniences
might happen or misse

John Berriman was also appointed for Steward make
in the Royall James

It was also agreed upon a proportion of Victuals to be allowed
to every of the said Fleet, to serve the said ships. (viz^t)

On Sundays, on dinner floffe w^e a quart of pease $\frac{1}{2}$ pint
 $\frac{1}{2}$ lb^e of butter and $\frac{1}{4}$ lb^e of Currant for pudding
 at supper floffe only w^e a quart of wyne or strong beer

Tuesdays } at dinner floffe and $\frac{1}{2}$ pint of pease.
 Thursdays } at supper floffe and a pound of pease
 Mondays } at supper floffe and pease.
 Wednesdays }
 Frydays } at dinner. Cateysale or pease. w^e $\frac{1}{2}$ lb^e of butter
 Saterdays } or a quantitie of oyle

$3\frac{1}{2}$ lb^e of meale y^e Drum for stee bread. a potbo of beer at break
 fast. and 3 quart at every meale, and wyne by quart shall come
 generallie to be spent, $\frac{1}{2}$ lb^e for every messe. at a meale shal
 be better to content men and keepe men in health, one fadge of
 matter continuallie to stand one $\frac{1}{2}$ deale. or the worse deale of
 the shipps wanting for $\frac{1}{2}$ deale for all to come to the shipps & drink
 but not otherwise to receive from Gen^l. silver in party or any
 thing else

It was agreed upon the meeting in case of the death
 of the fleet should be sent one of the ships in
 the main intended route for the East India by the way of
 the Cape or otherwise, that Gen^l should be so commanding. Shall
 God assist, to the best advantage, direct the course for
 Lawrence. and into St Augustin, that being the first place
 appointed for Rendezout and meeting. You to remaine some day
 for refreshing and to leave letters in that place at the foot of
 some tree. Large letters to be sent L. R. S. w^{ch} your last letters
 have beene, may be easier be found, and from Gen^l to Mr
 You to remaine at the time of the year shall permit. And at the
 from Gen^l to leave letters w^{ch} the $\frac{1}{2}$ of that place, expressed
 at the time, as it shall be, arrivall and departure, And from
 Gen^l to Curratt, w^{ch} ever God send, is in good time & shall
 w^e a safe arrivall

It was also ordyned. That for the shipps safety & better managment
 of a fleet in case it should happen & for venting the small of
 Ordynance w^{ch} w^{ch} men are oftentimes almost suffred by neglect
 of some carefull persons. Likewise for agreeing the shipps bet
 to the sea, that gratings should be made upon the
 shipps in the fleet one $\frac{1}{2}$ deale & under the $\frac{1}{2}$ deale, one the
 other $\frac{1}{4}$ deale or under, or one any other way like

A Consultation hold aboard the Royal James
 the 21st of June 1624, whereat were present
 whose names are here under subscribed,
 Before his Consultation, it was proposed by Capt. Weddell
 whether it were requisite and needfull to dispatche and away to
 the Bayes of good hope, one of the two Admiralls, the Bayes in
 Compa^{ny}. being at that tyme distant from Com^{mand}. or more upon
 70 leagues, in So^{uth}. latitude 30° - 40° . & west Longitude from
 the meridian of the Lyard of England 7° - 30° . and whether it were
 a better and surer way, for her to remaine in our Compa^{ny}. or
 bee suffered untill we were near the Bayes. or whether it were
 best to departe from us. for the Bayes. as mynd & reason
 would give for leave
 It was generally agreed for better satisfaction of the Com^{mand}.
 for respects of any of his servants. or friends her service. by
 possible it might be. to understand the passages of the
 of her place or otherwise. as the tyme afforded. That one of the
 should be fitted, w^{ith} all expedien. for performan^{ce} her self well
 supplied w^{ith} munition & victuals by proportion from
 the Compa^{ny}. according to what shee her wanted. to departe from
 the Bayes place w^{ith} in two dayes after the date hereof. the
 tyme appointed for departing & dispatche, w^{ith} the Admirall
 being stronge, well conditioned. and able to bear the sea so far
 by experience & well appointed w^{ith} all necessaries, both for defence
 and preservation, might by Gods assistance safely undergoe the
 voyage. or to any other place navigable as occasion required.
 For effecting whereof Andrew Evans, w^{ith} of the Court was
 ordered & appointed by consultation in her to undertake it. w^{ith}
 6. of the men. taken out of the Fleet. added to his Compa^{ny}. for
 want. supplied and well appointed to departe from us. upon the 23rd
 day next and immediately following for Cape of Good Hope
 to just and sundry, a general letter of our Com^{mand}. given
 to our Hon^{ourable} M^{ajesty}. his tyme her limited fortie eight
 dayes. and no longer, in that tyme to dispatche & to undertake
 tyme self. in his course & proceeding according to directions and
 a Commission given unto him by our Com^{mand}. for meeting of
 Compa^{ny}. heerein expressed the tyme and place
 the Bayes place it was appointed. & by well to the Boatson of the
 Compa^{ny}.

It was demanded before his consultation by s. Jap. of m. f. 41
 The shilps were came into s. Comp. 19 Ed. 16. 62 occasion
 of his separation from s. Albot. w^{ch} was upon the 5th of April
 dit. and upon that day he had so farre ahead of us as he
 perceived that foule weather would come to doe it for his
 safety. and to keep s. Comp. having that day parte of his
 quarter and tiller broken. w^{ch} he brought of all sea into some
 being fearful to keep no more. untill he had better fitted
 some shilps. least w^{ch} he could out beare him in the night. In
 w^{ch} time he saw no beare nor one better than other to the N. E. 1
 also soon as he could fit some shilps he did so like saying
 his head to the N. E. w^{ch} an easie sayle 4. or 5. glass. in w^{ch}
 time he could neither see shilps nor light. being a very darke
 night & much cloudy. supposing that we were passed by some
 open waye his former southerly course began for the Grand
 Canaries. hoping to have soon be in the morning. out before night
 looking out all that day to discover us & saying soon he had
 vize w^{ch} his distress & what course was to be taken for him
 to them men of warre or 4. yachts. w^{ch} often by about that
 Island or in the
 w^{ch} againe they all agreed to follow
 their course to the westward of all the Islands. and gently
 saule in for Cape de Verd. from thence to S. Leon. then to
 water and repaired his vessel. having parte of his provisions
 spoiled. and a great want of rum. before he attempted to buy
 other place to some known of refreshment. at his coming
 to S. Leon. (w^{ch} he stayed 2. dayes) to discover his business
 he found a Dutche ship bound for S. de fora. named the
 Orange tree of
 w^{ch} he had taken before his running
 he gave a small portugall vessel in for remaining Rice & Paddy
 w^{ch} the Dutche Commander gave unto him. w^{ch} w^{ch} he better
 masted some shilps rebuilt his 4. shilps and 2. quarter and other
 needfull places, taking of her what he wanted. & sett her off
 to go. as he formerly had promised to doe
 Now objections was made unto him by s. Jap. and Cap. -
 Kenridge, that he took that opportunity to his own private
 ends. and that he might have put in course for his own benefit
 and had trade to w^{ch} he had tested. that he never intended any
 more to come, only to provide one his voyage. w^{ch} all the said and

Diligent, you would to attain it, we had you nor any of your
Company bought nor bartered for any thing at all, only you had
brought some amongst the people of that place, a little quantity
of Aquaductio, to make fire with, & to water the people.
It was also concluded by Gods consultation, to make Cape
Bon Esperance in the latitude of 34° $20'$ and in case we
should ever be cast, we Contrary wind, should be foggy
weather. That we would not in that latitude, make it with
not to pass 35° Lat: until we had made the land be
long to the Cape Course, God being our Director for St. Lawrence
in Augustin Bay. You to refresh your selves, as the time of
your your would permit you, and so his journey ended

Jho: Kerridge.
Geo: Muschamps
Ric: Wilde.
G: Page.
Gregorie Clement
Her: Whetstry.
Robt Smythe.
Dan: White
Peeter Bell.

John Weddell.
Char. Newinger.
John: Rowe
Joha Johnson
Ric: Swanley
John Carter.
Nico: Norber.

A Consultation held aboard the Royal James
the first of July 1624

Before the Consultation it was proposed by Cap. Weddell
in regard the time of the year, for sailing our Mounsones
to Surratt was far spent, the wind ranging & varying
contrary to our oportations, more against us then for
hath been known, Gen distant from Cape de Bon Esperance
370 leagues or near upon in latitude of 33 - 30. and longitude
Eastward 9 - 12, some of the Fleet sailing probably, in so much
as it was greatly doubted to attaine yt or not, yf so be we
kept all Companies to go for, and a great difference in sailing
was better then an other, every day loosing ground, more or
less, in staying and delaying time, especially for the Starr
w^{ch} being a great hinderance unto us, & the worst sailer
of the Fleet, yt was generally agreed upon, to leave her to her
best advantage, and in debt for performance of her voyage, and
obtainyng her Port of Surratt. Directing for course for St.
Augustin Bay. that being the first place intended to go for
and to profitt, but meeting againe her to stay one for ten
of her, whoe she arriveth first, as the time will permit
yt was proposed unto this Consultation, by Mr. Howe w^{ch} of
the Starr, that in case she should be left, she should
not (notwithstanding her best endeavour) obtaine her Port of
Surratt, Desiring of this Consultation, to be appointed
unto what Port or Ports she should directe her selfe unto
w^{ch} was answered that in regard she was first consigned
by the Hon^{ble} Com^{rs} for Surratt, she was to be disposed of
according to their Commission and Council of that place
that she should use all the diligence she could for Augustin
Bay, w^{ch} being gett. and were happily met together she would
not be any more over sin the expectation, but in good time
to proceed all to go for, one our intended voyage, and in
case she could not gett. w^{ch} into St. Augustin Bay. but
w^{ch} Easterly wind, ferred her out St. Laurence. as
God send

As God forbiddeth, I should happen or grow to fynde or see, as yet
 I have to divers' formidably, w^{ch} (not wth standing) I have obtained
 the Coast of India and their port. all yourse beo' Latob, and
 w^{ch} great tediousnesse, making no question of his ability
 to be lesse then yours, reporting by some like I have
 and performanc, And that you should not direct or
 any other course, tending to any other place or port. I have
 by to get Coast of India and port of Gueraff, yet in case
 for want of matter or some other Casualties, that you should
 not attayne some convenient place in due tyme for his re-
 fusing. but should be forced else w^{ch} by that you should
 and groundly want Great for safe garde of your selfe and
 that you should seeke m^r. How m^r of the East, should be
 unto some of yourse. his m^r of the East, m^r. m^r. m^r. m^r.
 of your selfe of his selfe, w^{ch} you should best expedient
 and fitting to be admitted unto it, to determine of yourse
 place for the good and benefit of our selves and
 proceeding one yourse voyage

It was also ordered by his Consultation, that yourse should
 of the Royalty, that you were in for, one of them, should be
 mayne, by your selfe be taken out, and disposed of by
 portion unto some of yourse, unto the James 3 of yourse. unto
 yourse 3 of yourse. And the Eagle and the Post, and for the
 and yourse barrells of quills, w^{ch} you should best expedient
 not to be removed out of yourse, or meddled wth at all, by reason of
 great danger & dammage might happen hereby

Tho: Herbridge
 Ric: Wilde
 G: Page
 Gregorie Clement
 Hen: Whetley
 Robt: Smythe
 Dan: White

John Weddell.
 Char: Cleuenger
 John Rouse.
 John Johnson
 Ri: Swanley.
 John Carter.

Consultation held aboard the Royal James the
15th day of July 1624.

It was propounded by Capt. Weddell unto the Consultation, how
having of the fore day, made Cape Esperance, and at present in
first of the day, the winds began blowing southerly, and from southe
to East, keeping that Quarter, some contrary for us. That
we could neither double the Cape, nor get into Goddams baye
nor yet we should stand it off or keep the sea: untill we had
a faire wind, to goe for St. Laurence. according to former Con-
sultation, or we should have boord it untill we were
Du Dirts. in the means by the taking the first faire wind, to goe
either for Cables baye or for St. Laurence
And in that the wind should not in this time, for either of
these places, and a storme came faire to goe for St. Laurence
nor yet we should adventure for it. untill we had faire wa-
ter or not.

Unto this the Consultation resolved and agreed upon, that
if the wind came faire for us, betwixt this daye and the 20th
to double the Cape, and stand it along, w^{ch} a calme wind
we should proceed on directly for St. Laurence. or if the
wind first favoured us to get into Cables baye or into old
Goddams baye w^{ch} is 5 leagues from Comy Islands NNE, &
would not serve to goe alongst (according to a best description) that
we should endeavour to get into either of them, taking the first
opportunitie in the said time mentioned, either for St. Laurence
or for Goddams. and if it happen that the wind would not
serve for either of these purposes untill we be compleat out of the
said time, then it is resolved, that we should leave upon
the coast, attend wind and weather, to get Cables baye. The
usual place of our people refreshing, to supplye & bleed
the water or else, that gear can be had, but first we forsake
this land, w^{ch} out any further regarding of the lives, w^{ch}
cannot be avoided or otherwise reported, then to put us out of
Laurence, saving already many men downe of sickness, and a
good part of water, growne the more short by a long
passage

pastidge golger, and a litle exortion of water out of England
 Con over was before
 In the next place it was ordered by his Consultation, that
 the said seven shippes of Royaltie, w^{ch} formerly by a Consultation
 was appointed to bee taken out of the shippes Starr, and
 disposed of into the Fleet, according to that tyme, determine
 ned to save leafe for the being a continuall exortion
 unto us, more or lesse from England & the shippes
 being altered the standing of the mayne mast, so never ab
 le to go into the said port as it was at the former
 of the former Royaltie, for by the said better, and litle
 different herein betwixt you and the R. James
 In regard whereof it was also ordered by his Consultation
 that the said seven shippes of Royaltie, should bee
 sent unto the said port, in the selfe same condition, at our
 first port or unforming place, as they were by you delivered
 to be by you discharged, according to bill of lading out of
 England, consigned for India, w^{ch} you in due tyme
 Lord conduct us all in safetie Amen, and so his
 Consultation ended.

Georg Muschampe
 Ric: Wilde.
 Gregorie Clement
 Hen: Wheteley.

Daniell White

John Weddell.
 John Rowe
 Ric: Swanley.

At a Council hold aboard the Royall James the
13th of August 1674.

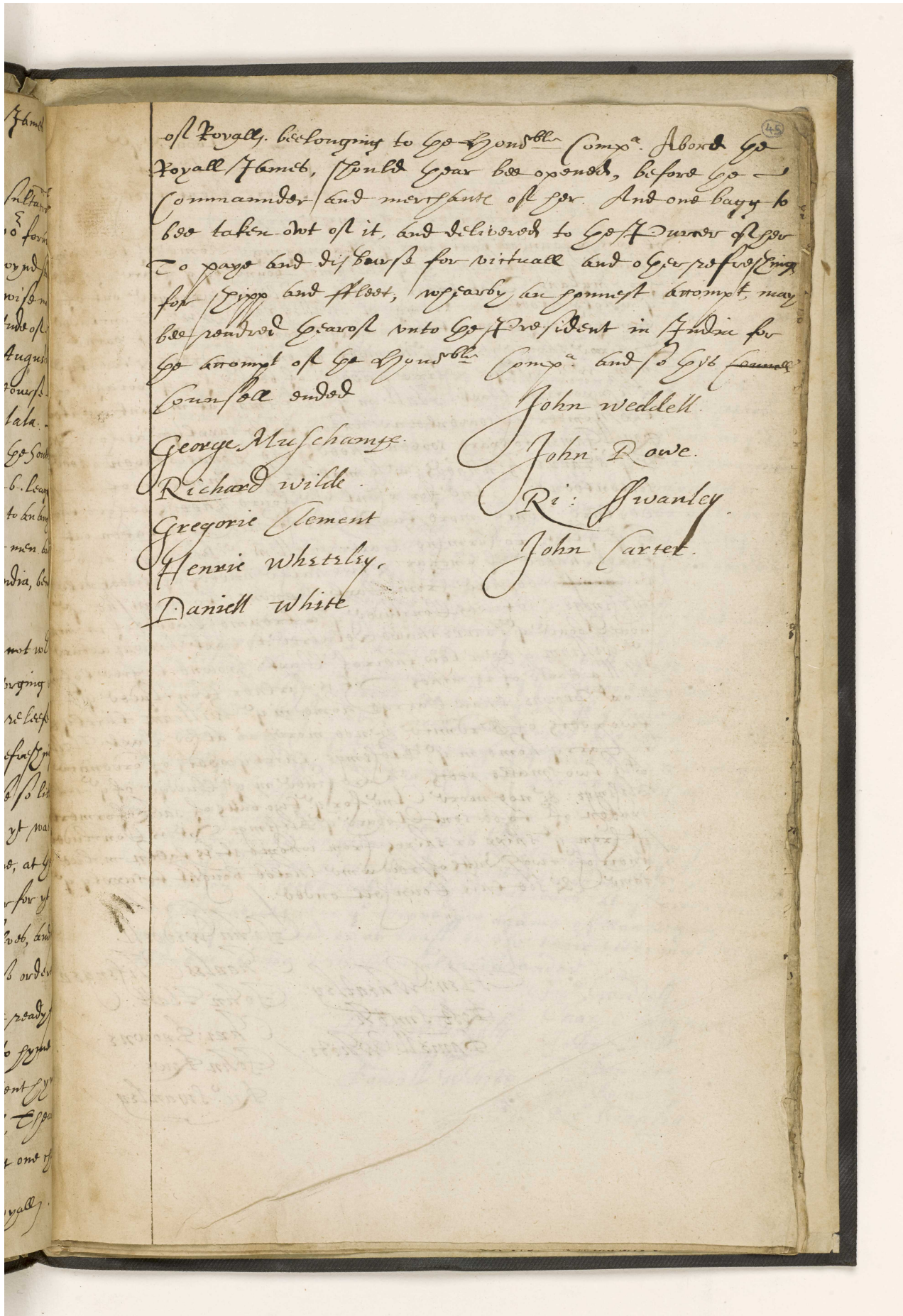
It was proponed by Capt. Weddell unto His Consultation, being
at present in ^{quad} 30-30 latitude: Go: Longit. 15. 40. E. from
the Cape bon Esperance, 190 Leagues distant from the South
land of St. Laurence. & 330 Leagues distant from the Cape
bon Esperance, we are at Goldania in Table Bay, was had
great plenty of the best of the best, being divers of the best
meats, we had place yelded for more comfort in the
voyage out than yet per on the voyage, which was
determined, to goe wth the East of St. Laurence, and to plye it
unto some place we mynd stood, being muche boyled, by
doubting the Moonson. We wth the best take of the
advantage of wynde, either to goe wth the East or wth the
West, & the Mayne, at the wynd best served, for either of
the purpose. It was resolved by His Consultation
that we should have our course directly for St. Laurence
in the time of the sailing, & coming under with it, that
if the wynd served better for us to goe wth the East, then wth the
West, then we should stand away, & goe wth the East, or if the
wynd served better for us to goe wth the West, then wth the
East, then we should stand it along, & goe wth the West, not trying
the time for either, but taking the first & surest advantage, in
our course and proceeding, for either of the before named purpose,
to God dole send, wynd and weather, for the execution of the
same, referring the rest unto some but limited time.
& Staron, wth the most contented. To His Consultation ended

George Muschampe
Richard wilde
Gregorie Clement
Henry Wheteley
Dapnick white

John Weddell
John Rowe
Ri: Swanley
John Carter

At a Councell held aboard the Royall James
the last of August @ 1624.

It was concluded by Capt. Wooddall unto his Consultation
that having now taken the advantage according to the former
Consultation, to come wth Sir & Laurence, the mynd being
ing wth better to goe wth Sir John & Gout, and likewise make
the land of the said Island, the 24th of June in the Latitude of
22. 10. wth land seen by the way to goe Norward of Augustines
Baye near unto it, from whence having passed the Goulet
betwixt it and John D'noia, directlie for Molala. —
where now at present falling wth the said Island, the South
most part thereof bearing from wth N N W: about 6. leagues
off, the mynd at S. E. wth the way should come to the land
at the said Island of Molala to refresh the sick men and
our selves, or to proceed on our course for India, being
so muche beleived as wee were.
The resolution of his Consultation is, that not wth
standing the time of the year, was first spent, bringing us
to stand it alonge for India, yett notwithstanding the neede
for the sick people, and our selves, required refreshing
especially at a place so convenient, and because so little
time should be consumed, as possible might be, it was
agreed upon, to anchor before the King Towne, at the
N. W. of the said Island. The mynd beinge further for yett
to remaine 24. houres, to supplye our selves, and
quite dispatise, in so short a time, it was also ordered
by his Consultation, a present to be made ready for
the King of that place, for to be delivered unto him
at our first goinge a shore, the better to content him
and for the better effecting of our business, the same
was likewise by his Consultation ordered, that one of
the Royall.



of Royall. belonging to the Honorable Comp^y. About the
Royall Hamet, should have been opened, before the
Commander and merchants of the said. And one bagg to
be taken out of it, and delivered to the said Surveyor of the
said, to paye and discharge for virtuell and other purposes
for the said and Fleet, whereby the said attempt, may
be rendered harmless unto the said President in India for
the attempt of the said Honorable Comp^y. and the said Council
Council ended

- George Maschauge.
- Richard wilde.
- Gregorie Clement
- Henric whetley.
- Daniell white

- John weddell.
- John Rowe.
- Ri: Swanley.
- John Cartet.

At a Councell holden in the Board of
 Royall James. the 23th of Octob^r 1624.
 In Swallow Boate. whose words were these
 the order following.

It was proponed touchinge the Mannaing of two shippes
 called the William & the Blessinge bound by a year of the
 for England. That their wants should be supplied out of
 the whole fleet now riding in Swallow Boate. And concluded
 upon for eight monthes & also homeward that same
 shippes should have the number of one hundred & twenty
 men with fifty & six hundred. of beere for the voyage of
 with proportion of beere. Shall in the Blessinge at present want
 the number of seven hundred. to be supplied at the
 Royall James. to spare seven hundred. the Jonas seven hundred
 & the James 3. hundred. with make up the number of
 seven hundred. And for the first of the four hundred beere the
 of the fleet to furnish the fleet. Shall in the Blessinge also
 three hundred of beere & two hundred of wood
 to be had from Capt. Browne. to furnish the
 Blessinge. It was concluded that a frame cable of 14
 now aboard the James shall be delivered to Capt. Browne aboard
 the William. & in low water of Capt. Browne to give to
 Capt. Browne. shall charge home in the William thirty
 two pieces of ordnance & not more as also Capt. Shall
 to charge home in the Blessinge thirty pieces of ordnance
 with two smaller pieces which are fitted in the Cuddy of the
 Blessinge. & not more. And for the two butts of sack formerly
 spoken of to be sent aboard the Blessinge. It is concluded
 that from the ships or shippes from whence it is taken in the
 said & so this Councell ended.

John Weddell.
 Charles Tisenger
 Hen. Wheatley. John Hall.
 Robt Smith.
 Daniell White. Chri: Browne.
 John Lowe.
 Lie: Swanley.

At allon sultaron hold' Edward y^e King James
y^e 19th of Novemb^r. 1624 noax to Britain wherout
wax those whose names are heretofore
subscribed.

It was expounded by Cap^t Woodroffe unto this Consultation
comyng here on our intended voyage (in Comyng wth the Dutch
C^o ships bound for Persia) at present meeting wth y^e Eagle
Mr^r Johnson who Comyng from Cape Comorey hath
sent in search of y^e ships some hath also tamely informed
y^e a flook of y^e ships was ready at Goa to come for service
in search of y^e English wth nowed is also notified by
Portugall & Portugall prisoners lately taken by y^e said
Eagle) ad they came from Goa bound for Chowly
withor it was most requisite for us to proceed on our voyage
wth y^e said Dutch for the said haveing sent unto them ad
& to knowe their intencion & resolution therin. Or to
returne back for Swally for security of y^e William &
Blissinge Ladynge for England to take them alonge for sea
wth us. It was also knowne y^e great fort of
Determination of y^e Portugalls. & y^e they are neare at hand
The resolution of this Consultation is by Dow resolution
of y^e Comyng y^e whether y^e Dutch will stay wth us or
for sake us. yet not wth standing y^e our flook shall attend
y^e safety of y^e said two ships for y^e sake of our Masters
of y^e honor of god & our Country. It is also for
take y^e said President & Counsellors advice for our further
direction. And soe this Comyng ended.

- | | |
|----------------|-----------------|
| Tho. Keridge | Jn. Woodell |
| Geo. Masshampe | Char: Cheverger |
| Jn. Bangham | Jhn: Gior |
| Hen: Whestley | Jhn: Johnson |
| Edw: Smith | Lie: Swanley |
| Daniell Wood | Jn: Pheltes |
| Peter Bell | Andrew Evans |

47

At a Consultation hold aboard y^e Royall James
 13th of November 1624. whereat were present y^e
 President & Councell of Sarrat w^{ch} y^e Admirall
 of Calicut, y^e Medell, w^{ch} y^e Command^r of his fleet
 at that tyme, y^e Capt. Hall, & Capt. James Brown
 Command^r of y^e ~~fleet~~ & Blisning & William
 The following propositions were proposed & approved
 And the conclusion thereupon made is.

The necessity of securing y^e Shippes Ladenge for England
 as also of supplying y^e fleet now at point intended for Persia
 w^{ch} last possible assistance for y^e more able w^{ch} standinge. - 1 -
 President, y^e Medell, y^e Command^r of y^e fleet, y^e Capt. Hall, y^e Capt. James Brown
 word, verbal and writt.

Assuming as w^{ch} y^e President & Councell of Sarrat upon
 advice of a letter of Portugalls prepared in Goa. & m^{ch} -
 intended. I have apprehended a daunger to y^e or remaininge
 Shippes Blisning & William w^{ch} y^e Command^r of y^e fleet
 we doe therefore require y^e opinion of y^e Capt. Medell
 & your Councell of sea men w^{ch} y^e Command^r of y^e fleet
 for y^e said Shippes w^{ch} it will not be requisite that one
 two forermentioned now in Ladenge. Or what other course
 more safe & convenient may be thought upon (y^e probability
 of danger considered) from y^e ground whereof we may
 we may proceed to a certaine resolution; w^{ch} also for y^e
 further proceeding in case of this moment. we require you
 to deliver y^e same w^{ch} y^e Command^r of y^e fleet
 be thought upon. The w^{ch} y^e said Capt. Medell & his counsell
 have nominated an word in y^e expression forest bst.
 Our opinions are y^t it is requisite to know y^e whole fleet then
 one, in regard y^t one is not of great moment to stay but too
 small a force to defend them against so great a force of
 Portugalls as it is reported. But in case there is necessity
 of our Persian Embolment. & y^t is doubtful of our said
 Shippes to remaine after our Departure in Swallowe roads
 that all expedition be made for them to fitt them selves
 to goe to sea & spend some few dayes there w^{ch} y^e
 Portugalls may conveniently be gone for Persia in
 time to weather or else to returne w^{ch} fleet w^{ch} such
 time as y^e before said Shippes be laden for England.

It was concluded a way to prevent to those intended for Japan
 as to your assistance of your other for Persia that neede
 of your vessels should be exempted from his intended
 employ: but yet 2. of his now in Ladys should wth all possible
 speed & care of such goods as are there remaining &
 havinge received aboard & stowed now what attendeth
 at y^e Mannie; to put to sea & there to receive the y^e fog
 of y^e fleet passinge in Goa. so past for thro moles
 The place concluded to be in 19. N. latitude some 23. or
 30 leagues. The time limited for their repaire back to the
 port at Swalley. to accomplish these Ladys y^e 10.
 Dorons at last. And soe this Consultation ended.

Sir Widdell.
 Sir: Trevinger.
 Sir: Croome.
 Sir: Hall.
 John Lowe.

Tho: Lasell.
 Giles James.
 Edw: Hoynes.
 Joseph Hopkinson.

48

A Consultation hold in Gembroue. v. 20
 y. 13. 2. of January 1624. About 8 y.
 Royal James

It was expounded by Capt Weddell. unto this
 Comission which it was not fittor to send y^e English
 & 2. y^e p^rinces arro^m p^res. y^e by Simon & Jace for
 y^e Dutch. Calafes. for y^e greater Shippes, &
 six to dispatch our passengers at Gombroone. &
 after wards howe shalbe with our whole fleet together.
 Whether upon it was concluded. & so followe y^e order
 yt it will more convenient for us. first to dispatch
 at Gombroone. as watering. & such like. & afterwards
 to set saile for Ormus. & afterwards Thoro
 of our Quary shippes with hulk wood. to take in ballast
 accordingly. It was likewise expounded. Mr. Lie. Swanley
 having 2. y^e plans. looking in a shew contrary to y^e
 order. y^e shippes y^e name one of them likewise named
 Anthony Britton. returninge some full speeches unto y^e
 M^r. Dowling ino marke y^e y^e M^r. Dowling him with a smile
 but to. miles by y^e contrary. he would never to me
 aboute againe. It was resolved. he being somewhat un
 ayed man. y^e he should be dealt with y^e young man
 had 30. lashes at Capstone. for further example
 but a y^e Capt. Weddell. havinge
 occasion to goe into hold. to surveye y^e goods & for
 y^e y^e of goods. & preparation. for ballastinge y^e goods
 directions. unto his experience. & meant what he thought fitt
 one of y^e Quarters mes. of y^e great James. named
 In. Dowling. whos. a little before y^e M^r. Dowlinge
 him for his ill language. he told y^e M^r. Dowlinge
 who saies should strike him he should never strike
 him more soome. likewise to contrary y^e ventradit
 y^e Capt. or profess Command. admy. thro into Disrespectful
 & y^e y^e w^rth. whoe upon y^e Dowlinge shalbe
 Comanded. soe much less slighted by him a lew. 3.
 badam

At a Consultation held at Court the 24th of Nov: 1624 by
 His Maj: James the first of Great Brittain
 upon whose name are returned subscribed
 by the Lord of the Admirall for a letter from Capt. Kerbridge
 that by procuring his vessel to be put into his hands in
 the shipps Jonas & Immanuel Scote from our fleet by reason
 they returned from Russia is likely to be later than was
 expected on intended first by assault of y^e Portugalls
 our army at several times afterwards to be soe
 wth y^e Dutch & thro' fleet in regard of y^e comy unity
 of y^e friends shippes may be betwixt them & us for y^e
 comfort of our hon^{ble} m^{ty} & likewise it was desired by
 Capt. Kerbridge to have y^e opinions of this Consultation
 for his Deputee wth y^e said shippes & remained showing
 many reasons therefor especially y^e want
 of his service at home for y^e furtherance of many
 business & matters that in respect of y^e health of
 our fleet in reason y^e wth y^e said shippes & y^e said
 all wth was provided unto Capt. Weddell by this
 Consultation It was generally agreed upon by this
 Consultation y^e m^{ty} will consider y^e y^e said
 & Immanuel Scote (according to Capt. Kerbridge request)
 should mediate their return for their best advantage
 to y^e port of Surat and all y^e rest of
 our fleet to be soe wth our Admirall except
 y^e said Capt. Kerbridge appointed by this Consultation
 to be soe wth y^e said Capt. Kerbridge for their services
 arrivall at Surat wth one of y^e Dutch fleet whom
 they please to appoint (if they understand y^e our
 resolution should agree thereto) & if otherwise
 they not liking thereof then all our fleet save
 y^e Jonas & Scote shall doe y^e best to be soe wth
 wth y^e said Admirall following him & his Deputees
 & soe this Consultation ended.

Jn. Weddell.
 Chr: Levinger
 John: Lewis
 Ric: Swalesy
 Jn: P. P. P.
 And: Evans.
 Tho: Sandall.
 Hen: Whitby
 Robt: Smith
 Lar: W. J.

The Council held aboard the Royal James
the 12th April whereat were present those
whose names and handwritings were:

Notwithstanding Capt. Roddell's open dissent of his Opinion from
the President & Council of Surat was ordered to set sail
with this Fleet to their severall employments. It was also ordered
by a dissent order from the said President and Council that he should
first receive the disposition of the Dutch whether to set sail in
Company, w^{ch} being performed by Mr. Muschamp & Mr. Stephenson
who were made a resolution from the said Dutch not to sail
till Monday the 13th Inst.

It was also resolved by Capt. Roddell in this Consultation whether
he should mediate by set sail or attend the Dutch and their
Company:

It was foregone resolved & concluded by this Consultation to
attend the Dutch until the 14th Inst. at noon & not longer
then by great assistance to set sail by their severall employments
according to Commission and so this Council ended.

Edw. Heynes
Geo. Muschamp
Joseph Stephenson
Gen. Westoby

Go. Roddell
Go. Rowe
Capt. Swanby
Go. Phelps

At a Council held aboard the Roy: James
the 22th April 1625: 50

The Dutch Coming aboard the 21th Dec^r Conferred wth our Comander and
Councell about joining of Compa together wth our whole fleet into
Cape Comorin wth desire to have half of what for our supplies by shipping
primarily or otherwise, and to putt of their men into the said Compa
what shall be convenient, and in case of any loss that should happen
upon any enterprise during the time of our Compa joining
according to the valuation of the vessell or vessells so lost they to be
liable to pay one half of the damage

The Councell having duly considered all Circumstances arising upon
the foresaid Propositions have resolved and concluded to make
Consort shipp wth the said Dutch according to their request into
Cape Comorin whosoev^r in regard of Advise given of a Gallies
upon the Coast or at Goa, as also to maintaine said shipp wth them
for future trade:

As whereas in the Commission given unto us in the Starr bound for
England by the President & Council of Surat, it is not expresse
nor was intended to Consort wth the two Dutch shipp bound for
Europe, but by word of mouth from the President advised his Consort
wth all reference to us of Councell to proceed therein according
as we shall apprehend fit to be done upon future Consideration
for a more assured and formall proceeding therein: Ed: Heynes
Deputie Merchant & John: Lowe Master doe require the opinions
of this present Councell whether it be most fitting for the
said shipp Starr to joine Compa wth the two Dutch shipp
aforesaid according to make Consort shipp wth them in this their
intended voyage for Europe, or otherwise wholly to desist
therefrom & singly to apply their voyage for England:

It is the opinion of this Councell for the said shipp Starr and the two
Dutch shipp to make Consort shipp & joine Compa together if the
demands of the said Dutch be reasonable and not prejudiciall to our
honorth Employers wth it to be considered by the Councell about the
Starr to whom it is wholly referred:

This day the Primare Simon & Jude took a small Jonke of Calcutta
called Laden wth Quant of small
valow wth this present Councell doo wish to be lawfull prise
by virtue of the Commission given to our Comander by the President
& Councell of Surat, the belonging to an enemyes shipp, and
part of her Cargazone laden wth her belonging to the Portugall
as by their own Confession and Portugall Letters forsoying the same
It is likewise

At a Council held aboard the Roy: James
the 25th April 1625:

A former Consultation of the 22th present handling ab theirin
appoynted made lawful prize of a sloop belonging to Colen
with small cargo finding to be of small estimation, and
badly fitted wth sailed to you for Batavia in Company. It was
propounded by Capt Weddell into this Consultation whether
whether was shoud follow our first resolution or to take out
of her so much of her lading as to load her ballasted, or
to discharge her and Company being wearied into her efforts for
or to forgoe them on our voyage for Batavia untill we
were forced to leave her either by foul weather or contrary
winds:—

It being upon it was generally thought fitt and concluded by
this Consultation in regard of the late season of the year
and her bad sailing to towards her at the James, & shew
untill opportunity of wind and weather might permit her
discharging or ballasting goods and other necessaries, then
the hull to be turned a drift, And the Nocada Malim
with six and other convenient men to be sent ashore, in
their own boats to receive for him as convenient the
may be and the best of these convenient men to be
carried in the royall James for Batavia there to be
referred unto the Disposure of President & Council
either to be detained or returned into their own
Country &c.

Ed: Hignes
Gov: Muschamp
Capt Hutchinson
Hon: Bristoly
Samill White:

Go: Weddell
Go: Rowe
Go: Johnson
Lieut: Swanby
Go: Carter
Go: Vian



