

This PDF was generated on 27/01/2022 from online resources of
the **Qatar Digital Library**

The online record can be viewed at:

http://www.qdl.qa/en/archive/81055/vdc_100000001273.0x000336

It contains extra information, high resolution zoomable views and transcriptions.

'Nicholas Sharpe's Journal of the Charles'

Holding Institution	British Library: India Office Records and Private Papers
Reference	IOR/L/MAR/A/LIII
Date(s)	10 Apr 1629-17 Nov 1630 (CE, Gregorian)
Written in	English in Latin
Extent and Format	1 volume (34 folios)
Copyright for document	Open Government Licence



About this record

Journal of the voyage of the East India Company ship *Charles* from England to Surat (Captain John Weddell, Master John Elsmore), 1629-30 (dates given are for arrival unless otherwise indicated): left the Downes [Downs], 10 April 1629; 14 August 1629, Molila [Moheli]; 9 October 1629, Swallow Howle [Suvali, Surat]; 20 January 1629 [New Style date 20 January 1630], Commerun [Bandar Abbas]; 17 March 1629 [New Style date 17 March 1630], Suvali; 4 June 1630, Morrishes [Mauritius]; 23 October 1630, left Cap bonserpance [Cape of Good Hope].

The ship was at Swally Hole from 9 October to 19 December 1729, and from 17 March 1629/30 to 12 April 1630.

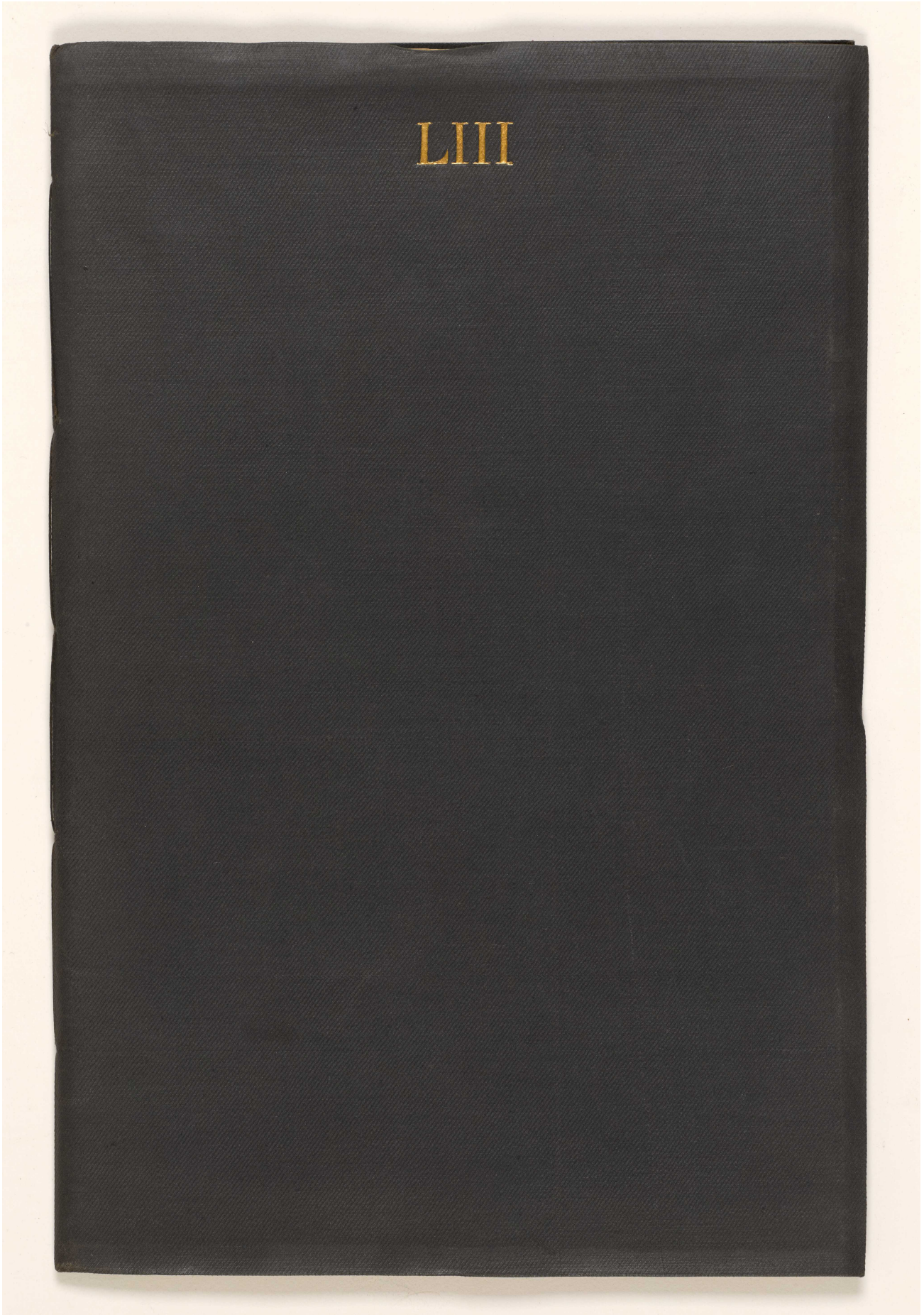
Inscribed on the front (inner) cover of the volume: 'Charles, London, Discovery, Reformation, & Samuel', and, (in the case of the first three ships) 'under Capt John Weddall'. The word 'London' also appears on this cover (erased), and the date '1629'.

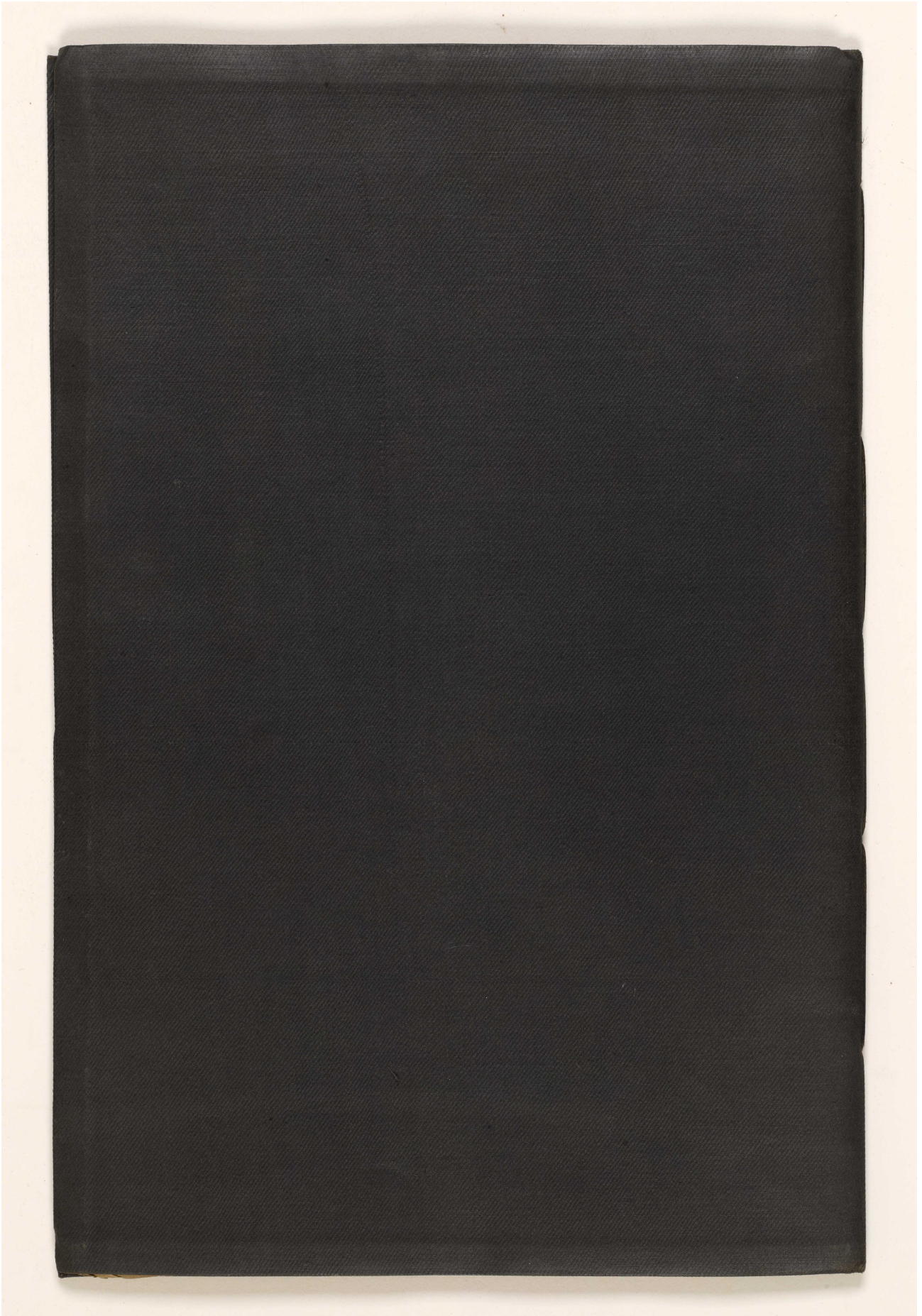
Also inscribed: 'A jurnall of a voyadg [voyage] to the East India set out by the honorable companye of marchants trayding for thos parts in the yeare of our lord 1629 in this voydg were employed 4 ships the Charles the london the Discovery & reformation & the samuell captaine john weddall being the Chefe Commander of the flet Ceept [kept] by nicholas sharpe M[aster's] matte [Mate] of the Charles the which voyag the lord prosper Amen' (folio 1).

The journal contains regular dated entries, and summary comments in the left hand margin.

The journal records: navigational information; weather; commodities carried, references to the other ships with which the *Charles* sailed in convoy; sightings of Dutch and Portuguese ships; and general remarks.

The journal employs Old Style (Julian calendar) dates only.





'Nicholas Sharpe's Journal of the Charles' [spine] (3/80)



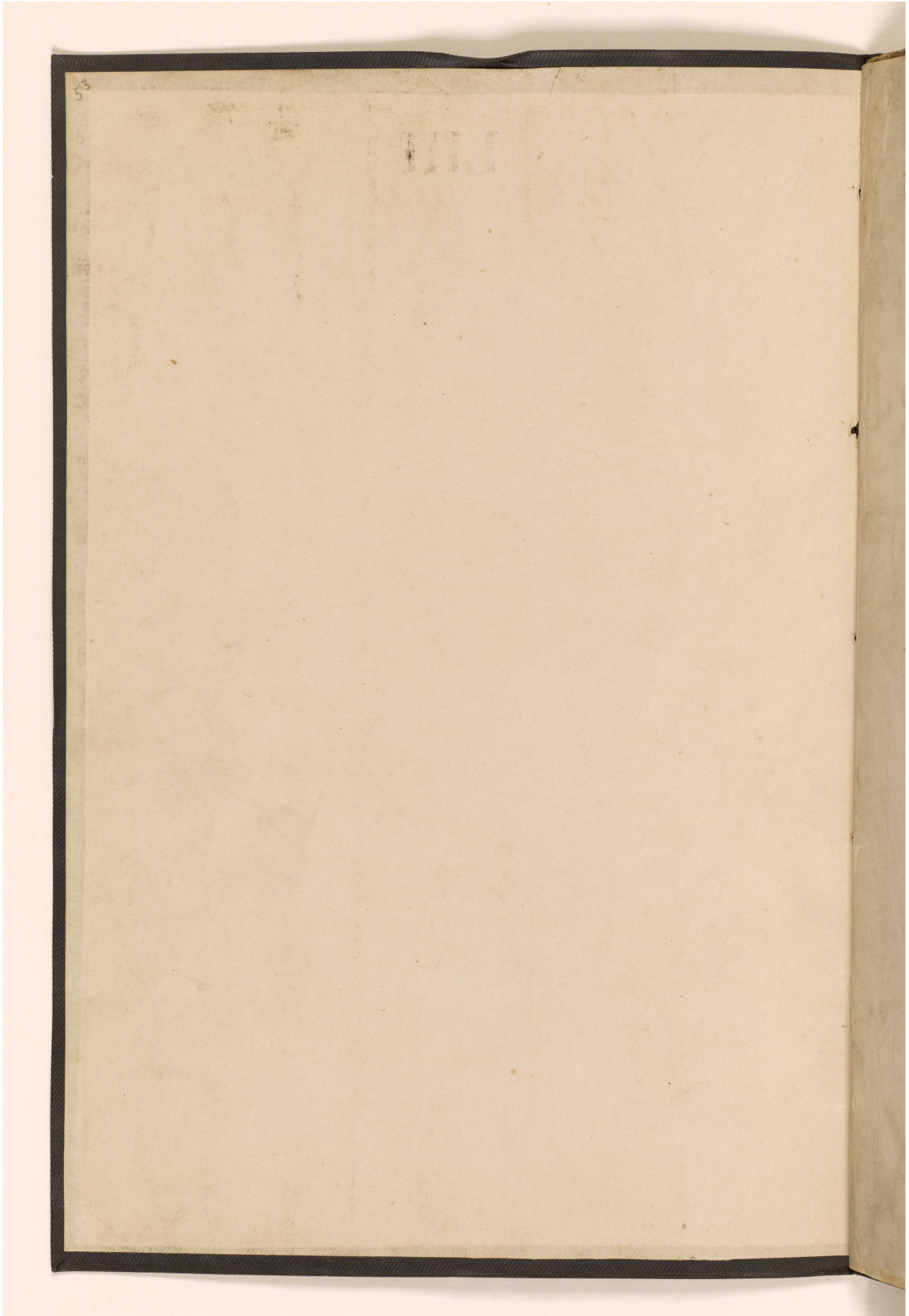
'Nicholas Sharpe's Journal of the Charles' [edge] (4/80)



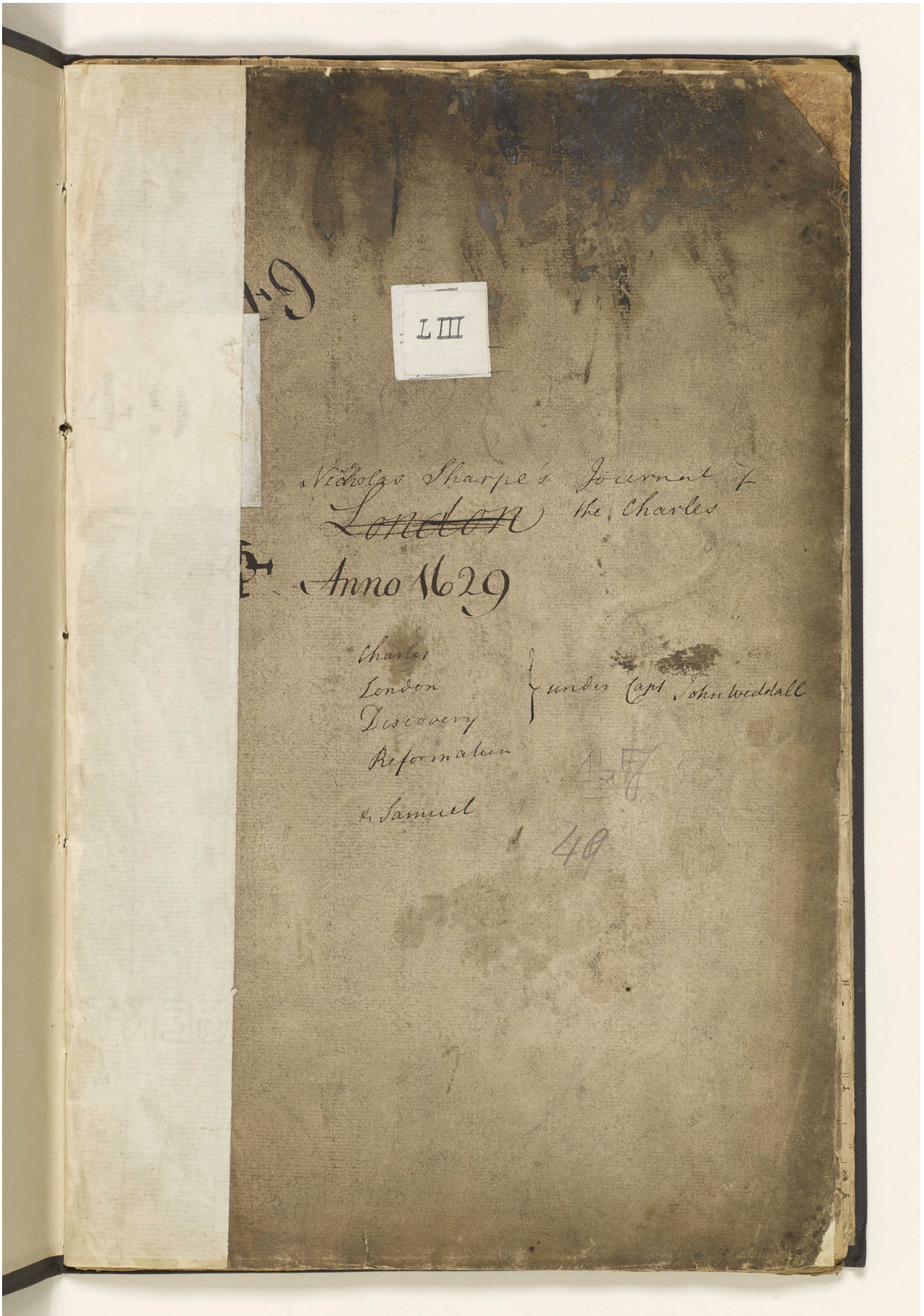


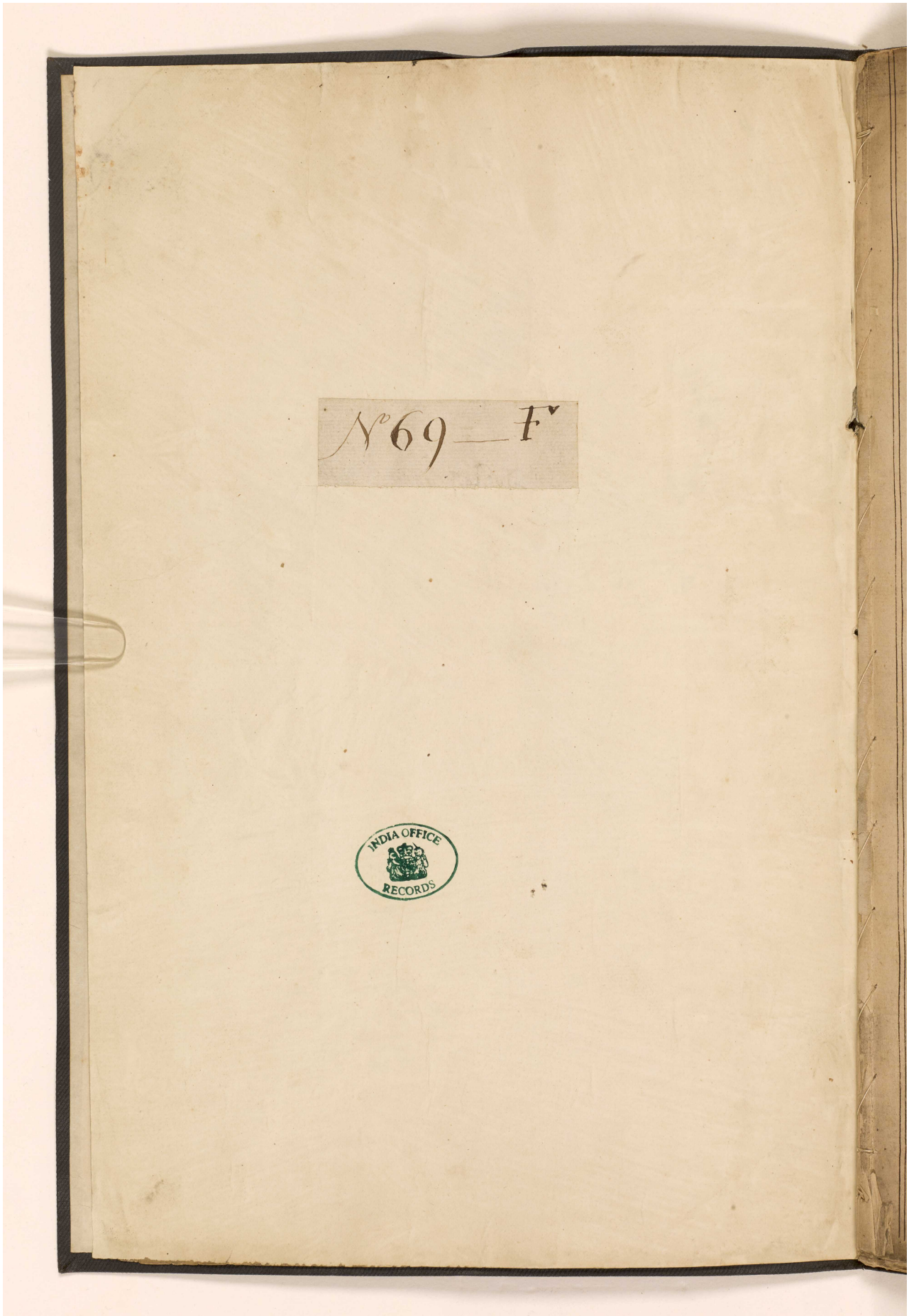
'Nicholas Sharpe's Journal of the Charles' [tail] (6/80)





'Nicholas Sharpe's Journal of the Charles' [front-a] (8/80)





583
53

A Journal of a voyage to the East India set out by
the honorable Company of merchants trading for that
part in the year of our Lord 1629 in this voyage were
employed 4 ships the Charles the Lord on the ground
information of the famous Captaine John Woodall being
the chiefe Commande of the fleet Except by nicholas sharpe
in mate of the Charles the whole voyage the Lord
prospered Amen

day

April 1629

10 the 10 day we wayed out of the Dorset the wind att .x. E.

13 the 13 att night we were at his at the nodlot having
them .x. of us on the south side of the whit is 10: 19: 20
fad of water .3: or 4 leagues of the shore

14 the 14 having fair weather we entered betwene the nodlots
& portland in 25 fad road stonie ground

15 the 15 finding the wind westerly in the Chanell we stood in
for tar bay & entered in 10 fad ham having the point bearing
S: 6: E: of pt here we found Captaine Wills fleet

16 the 16 we wayed out of tar bay & were at his at the
start but finding the wind westerly in the Chanell we
bore some leagues

19 the 19 in the morning we wayed with a fair wind att .w.
& so did Captaine Wills fleet this night att 12 of the cloke
the lizard bore .x. of us some 6 leagues of from the 19 att
12 of the cloke att night to the 20 day att non bearing
S: w: 24 leagues longitud from lizard 02-40 west

20 from the 20 att non to the 21 att non fair weather the wind
N: N: E: bearing S: 34: w: 40: leagues latitude 40-14
longitud from lizard 02-04 west

21 from the 21 att non to the 22 att non fair weather the
wind E: N: E: bearing S: 23: w: sailed 32 leagues latitude by
observation 45-47 longitud from lizard 03-15 west

22 from the 22 att non to the 23 att non foyre weather the
wind variable S: 23: w: sailed 14 leagues latitude by observa
45-06 C. longitud from the lizard 03-20 west

		April 1629	May 1629
		23	from the 23 att non to the 24 att non fair weather the wind variable Course: S: 12: W: sayled 10 leagues latitude by observation 44-03 longitude from lizar 03-36 west
wind variable foggy weather		24	from the 24 att non to the 25 att non foggy weather the wind variable between the: S: & the: W: with Calmed Course: S: 34: W: sayled 07 leagues latitude by judgment 43-57 longitude from lizar 03-50 west
latitude 43-57 longitude 03-50		25	from the 25 att non to the 26 att non fair weather the wind: S: 12: W: sayled 16 leagues latitude by observation 43-16 longitude from the lizar 04-03 west
		26	from the 26 to the 30 being not well I found by observation to have sayled 5.6 leagues: S: 10: W: longitude from the lizar 04-30 west
		30	from April the last att non to may the first att non fair weather the wind: N: E: & N: N: E Course: S: 23: W: sayled 41 leagues latitude by observation 30-16 longitude from the lizar 05-10 west
may the first 1629		1	from the first att non to the second att non fair weather the wind between the: E: N: E: & N: E Course: S: 11: W: sayled 44 leagues latitude by observation 30-16 longitude from the lizar 05-36
		2	from the second att non to the third att non fair weather the wind between the: E: N: E: & N: E Course: S: 12: W: sayled 43 leagues latitude by judgment 34-10 longitude from the lizar 06-02 west
		3	from the 3 att non to the 4 att non fair weather the wind: N: N: E: Course: S: 08: W: sayled 60 leagues latitude by observation 31-13 longitude from the lizar 06-46 west being misty we had no sight of the mountains
The land on front his mantop craft very white		4	from the 4 to the 5 att non fair weather somewhat foggy the wind: N: N: E: Course: S: 06: W: sayled 55 leagues latitude by observation 20-30 longitude from lizar 06-40 west this after att 2 of the plot we made the ground
made the ground narrower		5	from the 5 att non to the 6 att non fair the wind: N: E: Course: S: 24: W: sayled 62 leagues latitude by observation 25-40 longitude from lizar 00-05 west
		6	from the 6 att non to the 7 att non fair weather the wind: N: N: E: Course: S: 34: W: sayled 40 leagues latitude by observation 24-04 longitude from lizar 00-35 west
crossed the tropicks of Cancer		7	from the 7 att non to the 8 att non fair weather the wind variable between the: N: & the: E: Course: S: 23: W: sayled 34 leagues latitude by observation 22-20 longitude from lizar 00-50 west

may 1629	
8	from the 8 th att non to the 9 th att non fair weather the wind variable southerly S: 16: W: sayled 30 leagues latitude by observation 20-55 & longitude from the lizard 09-07
9	from the 9 th att non to the 10 th att non fair weather the wind variable southerly S: 03: E: sayled 27 leagues latitude by judgment 19-33 longitude from lizard 09-06 west this day att non the same our Zenith Euxine variation 04-00 east
10	from the 10 th att non to the 11 th att non fair weather the wind: W: E: W: S: W: sayled: S: 08: W: 35 leagues latitude by judgment 17: 40 & longitude from the lizard 09-12 west
11	from the 11 th to the 12 th att non fair weather the wind variable between the W: E: W: N: W: sayled: S: 35 leagues latitude by judgment 16-05 & longitude from lizard 09-12 west
12	from the 12 th att non to the 13 th att non fair weather the wind variable sayled: S: 35 leagues latitude by judgment 14-23 & longitude from lizard 09-12 west
13	from the 13 th att non to the 14 th att non fair weather the wind: W: E: W: S: W: sayled: S: 04: E: 37 leagues latitude by observation 12-30 & longitude from lizard 09-10 west
14	from the 14 th att non to the 15 th att non fair weather the wind: W: E: W: S: W: sayled: S: 11: E: 30 leagues latitude by observation 10-32 & longitude from lizard 08-50 west
15	from the 15 th to the 16 th att non fair weather wind variable sayled: S: 11: E: 26 leagues latitude by observation 09-16 & longitude from lizard 08-34 west
16	from the 16 th to the 17 th att non fair weather the wind: S: W: E: W: S: W: sayled: S: 17: E: 26 leagues latitude by observation 08-00 & longitude from lizard 08-26 west
17	from the 17 th att non to the 18 th att non the wind variable sayled: S: 11: E: 30 leagues latitude by observation 06-40 & longitude from lizard 08-00 west
18	from the 18 th att non to the 19 th att non this day horrid bores but many gusts of wind & much rain entered into the tornadab latitude by observation 06-40 & longitude from the lizard 07-55 west
19	from the 19 th att non to the 20 th att non much rain the wind variable upon all points of the compass sayled: S: S: W: 08 leagues latitude by judgment 06-10 & longitude from lizard 08-00 west
20	from the 20 th att non to the 21 th att non the wind variable very much rain sayled: S: 12: E: 26 leagues latitude by judgment 05-25 & longitude from lizard 07-50 west

the same our Zenith Euxine variation 04-00 east

latitude 12-30
longitude 09-10

Entered in to the tornadab gusts of wind & much rain latitude 06-40 longitude 07-55 west

may/1629/ June/1629/

Calmed & way not
a Corrant set
to the northward

from the 21 to the 25 were in Calmed & way not
the short quill of wind & by our observations found
a Corrant to set to the northward

from the 25 att non to the 26 att non the wind ~
variable sayled: S: W: 11: loags latitude by observation
04-55 & longitude from lizard 00-13 west

from the 26 att non to the 27 att non wind variable
much way no sayled: W: 33: S: 16: loags latitude by
judgment 04-30 & longitude from lizard 00-53 west

from the 27 att non to the 28 att non wind variable
much way no sayled: E: 20: S: 06: loags latitude by
judgment 04-20 & longitude from lizard 00-35 west

from the 28 att non to the 29 att non the 24 hours
be calm very much way no latitude 04-20 & longitude
from lizard 00-35 west

from the 29 att non to the 30 att non wind variable
sayled: W: 33: S: 20: loags latitude by observation 04-33
& longitude from lizard 09-15 west

June the first
1629

from the 30 att non to the 31 att non fair weather the
wind betwix the: S: E: & S: W: sayled: S: 22: W: 00: loags
latitude by observation 04-10 & longitude from lizard 09-30

from the last of may att non to the first of June att
non fair weather the wind: S: E: W: sayled: E: 33: S: ~
14 loags latitude by observation 03-43 & longitude from
lizard 09-06 west

from the first of June att non to the second att non
fair weather the wind att: S: sayled: W: 22: S: 13 loags
latitude by observation 03-25 & longitude from lizard
09-40 west

from the 2 att non to the 3 att non fair weather
the wind: S: S: E: sayled: S: 45-00: W: 15: loags latitude
by judgment 02-53 & longitude from lizard 10-10 W

from the 3 att non to the 4 att non the wind variable
S: 22: W: 24 loags latitude by observation 01-34
& longitude from lizard 10-30 morning variation 02-17 E

from the 4 att non to 5 att non fair weather the wind
variable sayled: W: 33: S: 12 loags latitude by observation
01-24 & longitude from lizard 10-55 west

from the 5 att non to the 6 att non fair weather the
wind: S: E: E: sayled: S: 11: W: 23: loags latitude by obser-
00-16 north & longitude from lizard 11-05 west morning
variation 02-34 east the day att 4 of the old in
the afternoon we crossed the Equinotiall here
we had very much fish followed our ship 300 loags

we had the ~
Equinotiall in
longitude 11-05
west from the
meridian of the
lizard having
variation: 02-35
east much fish

latitud
longitud
variat

latit
longit
variat

latit
longit
variat

		June 1629	5 (3)
<p>629</p> <p>not observations found</p> <p>in the middle of observation west</p> <p>in middle variable latitud by 04-00-55 west</p> <p>in middle variable latitud by 04-00-55 west</p> <p>the 24 hours 20 of longitude</p> <p>middle variable observation 04-33</p> <p>fair weather the 12 w: 00: loags from lizard 09-30</p> <p>of June at 08: 35: 5: w longitude from</p> <p>found at noon 22-5: 13 loags from lizard</p> <p>fair weather 12 loags latitud lizard 10-10 w</p> <p>the middle variable 01-37 of variation 02-17</p> <p>weather the middle latitud by observation west</p> <p>weather the latitud by observation 05 west morning of the 24 hours at all hours ship 300 loags</p>		<p>from the 6 att noon to the 7 att noon fair weather the wind S: E: say led: S: 22: w: 30 loags latitud by observation 01-05 longitude from lizard 11-35 west</p> <p>from the 7 att noon to the 8 att noon fair weather the wind S: S: E: say led: S: 33: w: 30 loags latitud by observation 02-40 longitude from lizard 11-35 west morning variation 03-30</p> <p>from the 8 att noon to the 9 att noon fair weather the wind between the S: S: E: E: S: E: say led: S: 22: w: 26 loags latitud by observation 04-00 just longitude from lizard 11-05 west evening variation 04-00 East</p> <p>from the 9 att noon to the 10 att noon the wind: E: S: E: say led S: 11: w: 20 loags latitud by observation 05-15 longitude from lizard 11-25 west morning 05-00 of evening variation 05-10 west</p> <p>from the 10 att noon to the 11 att noon fair weather the wind E: S: E: say led: S: 11: w: 30 loags latitud by observation 06-39 longitude from lizard 11-40 west</p> <p>from the 11 att noon to the 12 att noon fair weather the wind: E: S: E: say led: S: 17: w: 30 loags latitud by observation 08-10 longitude from lizard 13-05 west</p> <p>from the 12 att noon to the 13 att noon fair weather the wind: E: S: E: say led: S: 27: w: 30 loags latitud by observation 09-30 longitude from lizard 13-45 west evening variation 09-05 East</p> <p>from the 13 att noon to the 14 att noon fair weather the wind E: S: E: say led: S: 33: w: 26 loags latitud 10-30 longitude from lizard 14-32 west</p> <p>from the 14 att noon to the 15 att noon wind: S: E: S: E: say led S: 17: w: 20 loags latitud by judgment 11-40 longitude from lizard 15-00 west</p> <p>from the 15 att noon to the 16 att noon wind: S: S: E: say led S: 11: w: 20 loags latitud by observation 12-54 longitude from lizard 15-13 west evening variation 09-04 East</p> <p>from the 16 att noon to the 17 att noon fair weather the wind: S: S: E: say led: S: 17: w: 29 loags latitud by observation 14-16 longitude from lizard 15-45 west evening variation 10-15 East</p> <p>from the 17 att noon to the 18 att noon quite weather with rayno the wind: E: S: E: say led: S: 11: w: 22 loags latitud by judgment 15-35 longitude from lizard 15-50 morning variation 10-40 East</p> <p>from the 18 att noon to the 19 att noon quite weather with rayno the wind between the E: S: E: S: E: say led: S: 06: w: latitud by judgment 16-40 longitude from lizard 16-10 west evening 10-53 East</p>	
	<p>latitud 04-00 longitud 11-05 variation 04-00</p>		
	<p>latitud 09-30 longitud 13-45 variation 09-05</p>		
	<p>latitud 14-16 longitud 15-45 variation 10-15</p>		

June 1629 //

from the 19 att non to the 20 att non quite weather with way no
the wind between the S: E: S: E: say too: S: 11: E: 20 leagues latitude
by judgment 18-09 of longitude from lizard 18-05 west morning
variation 12-26 East

from the 20 att non to the 21 att non quite weather with
way no the wind between the E: S: E: S: E: S: E: say too: S:
03: W: 24 leagues 19-19 of longitude from lizard 18-05 ending variation
12-30 East

from the 21 att non to the 22 att non quite weather
with the wind: E: S: E: S: E: say too: S: 11: E: 19 leagues latitude
20-15 of longitude from lizard 18-10 west morning -
variation 12-25 no lowered of port of ordnance
down into hold

from the 22 att non to the 23 att non quite weather with
way no the wind variable between the N: E: S: E: say too:
S: 33: E: 20 leagues latitude 21-10 of longitude from lizard
18-46 west

from the 23 att non to the 24 att non fair weather the wind
between the N: N: E: S: E: N: E: say too: S: 45: E: 35 leagues latitude
by observation 22-30 of longitude from lizard 14-20 west

from the 24 att non to the 25 att non fair weather the
wind: N: N: E: say too: S: 45: E: 40 leagues latitude by
judgment 24-00 of longitude from lizard 13-03 west

from the 25 att non to the 26 att non fair weather the
wind N: N: E: say too: S: 45: E: 37 leagues latitude by observation
25-25 of longitude from lizard 11-50 west morning
variation 13-30 East

from the 26 att non to the 27 att non fair weather the
wind at: N: N: E: S: N: E: say too: S: 45: E: 34 leagues by
observation 26-35 of longitude from lizard 10-39 morning
variation 14-07 East

from the 27 att non to the 28 att non fair weather the
wind: N: E: say too: S: 45: E: 16 leagues latitude by judgment
27-00 of longitude from lizard 10-00 west ending variation 14-11

from the 28 att non to the 29 att non fair weather the
wind between the S: E: N: E: say too: S: 11: E: 15 leagues
latitude by observation 27-55 of longitude from lizard 09-50
west morning variation 14-30 East ending the like

from the 29 att non to the 30 att non fair weather the wind
between the E: S: N: E: say too: S: 22: E: 14 leagues latitude by
observation 28-32 longitude from lizard 09-34 west
morning variation 14-30 ending the like

latitude 20-15
longitude 18-10
variation 12-25
quite weather
with way no
lowered of port
of ordnance
down into hold

to the the
top of the
cabin round

latitude 25-25
longitude 18-50
variation 13-30

latitude 28-32
longitude 09-34
variation 14-30

latitude
longitude
variation

very
wind
not be
top for
bluff

low
mist
the
frust
in to

latitude
longitude
made
from
to far
more

July 1629 // 7 (4)

from the last of June to the first of July at non fair weather the wind between the $\text{E} \cdot \text{E} \cdot \text{N} \cdot \text{E}$: say $\text{E} \cdot \text{S} \cdot 33 \cdot \text{E}$: 20 leagues no observation of weather this day by the wind shift toeward the $\text{N} \cdot \text{E} \cdot \text{N} \cdot \text{W}$: wherby you continued unto the latitude by judgment $29 \cdot 23''$ longitude from lizard $09 \cdot 02''$ west morning variation $14 \cdot 20''$ East

from the first of July at non to the second at non fair weather the wind between the $\text{N} \cdot \text{N} \cdot \text{W} \cdot \text{E} \cdot \text{N} \cdot \text{N} \cdot \text{E}$: say $\text{E} \cdot \text{S} \cdot 33 \cdot \text{S} \cdot 36$: leagues latitude by judgment $30 \cdot 20''$ longitude from lizard $07 \cdot 20''$ west morning $14 \cdot 20''$ East

from the 2 at non to the 3 at non fair weather the wind $\text{N} \cdot \text{E} \cdot \text{E} \cdot \text{N}$: say $\text{E} \cdot \text{S} \cdot 33 \cdot \text{S} \cdot 40$: leagues latitude by observation $31 \cdot 35''$ longitude from lizard $05 \cdot 40''$ west morning variation $14 \cdot 10''$ East

from the 3 to the 4 at non very much wind at $\text{N} \cdot \text{E} \cdot \text{E} \cdot \text{N}$: say $\text{E} \cdot \text{S} \cdot 33 \cdot \text{S} \cdot 46$: leagues latitude by judgment $32 \cdot 40''$ longitude from lizard $04 \cdot 10''$ west we took in our top sayles for some this day in the afternoon left 4 men

from the 4 at non to the 5 at non the wind between the $\text{N} \cdot \text{E} \cdot \text{N} \cdot \text{E}$: very much wind foggy weather say $\text{E} \cdot \text{S} \cdot 37 \cdot \text{S}$: leagues latitude by judgment $33 \cdot 15''$ longitude from lizard $02 \cdot 20''$ west

from the 5 at non to the 6 at non the wind between the $\text{N} \cdot \text{E} \cdot \text{N} \cdot \text{W}$: foggy weather & very say $\text{E} \cdot \text{S} \cdot 05 \cdot \text{N} \cdot 30$: leagues latitude by judgment $33 \cdot 13''$ longitude from lizard $00 \cdot 33''$ west

from the 6 at non to the 7 at non cloudy weather the wind between the $\text{N} \cdot \text{W} \cdot \text{E} \cdot \text{N} \cdot \text{W}$: say $\text{E} \cdot \text{S} \cdot 20$: leagues latitude by observation this day $33 \cdot 10''$ longitude from lizard $00 \cdot 50''$ East crossed the meridian of the lizard & steered 6 leagues into the

from the 7 at non to the 8 at non foggy weather the $\text{N} \cdot \text{W} \cdot \text{E} \cdot \text{N} \cdot \text{W}$: say $\text{E} \cdot \text{S} \cdot 05 \cdot \text{S} \cdot 35$: leagues latitude by judgment $32 \cdot 55''$ longitude from lizard $02 \cdot 30''$ East

from the 8 at non to the 9 at non foggy weather very much wind between the $\text{N} \cdot \text{W} \cdot \text{E} \cdot \text{N} \cdot \text{W} \cdot \text{E} \cdot \text{N}$: say $\text{E} \cdot \text{S} \cdot 05 \cdot \text{N} \cdot 55$: leagues latitude by judgment $32 \cdot 25''$ longitude from lizard $05 \cdot 16''$ East

from the 9 at non to the 10 at non thick foggy weather much wind all night in the morning it proved calme wind at $\text{W} \cdot \text{S} \cdot \text{W}$: say $\text{E} \cdot \text{S} \cdot 11 \cdot \text{S} \cdot 46$: leagues latitude by observation $32 \cdot 57''$ longitude from lizard $07 \cdot 34''$ East

from the 10 at non to the 11 at non wind variable upon all points of the compass say $\text{E} \cdot \text{S} \cdot 03 \cdot \text{S} \cdot 25$: leagues latitude by observation $33 \cdot 00''$ longitude from lizard $00 \cdot 49''$ East

from the 11 at non to the 12 at non cloudy weather the wind $\text{N} \cdot \text{E} \cdot \text{W}$: say $\text{E} \cdot \text{S} \cdot 06 \cdot \text{S} \cdot 55$: leagues latitude by observation $33 \cdot 15''$ longitude from lizard $11 \cdot 35''$ East this day made the wind veer from our point for to sail one more point

Latitude $29 \cdot 32''$
Longitude $09 \cdot 02''$
variation $14 \cdot 20''$

very much wind no route not board our top sayles and lost 4 men

crossed the meridian of the lizard about 6 leagues into the

Latitude $33 \cdot 15''$
Longitude $11 \cdot 35''$
made sayles from our point to sail one more point

July 1629

from the 12 to the 13 att non the wind n.n.w.
indefinite & low weather say too: 8: n: 5: 56: bags
latitude by observation 33-51 of longitude from
lizard 14-20 East

from the 13 att non to the 14 att non the wind ~
n: n: w: fair weather say too: 8: 04: 5: 52: bags
latitude by judgment 33-56 of longitude from the
lizard 17-00 East evening variation 23-15 East
it is found by experiment that in 16 or 17 of
East longitude from the meridian of the lizard -
to have 03-30 of variation East from thence say long
: 8: for 200 leagues you shall make the day compass
to 100 leagues of you shall not with wood like
trumpets: 0: 0: 10: foot long: when you see the
lets out for land every day - a ~

from the 14 att non to the 15 att non wind n: n: w:
quiet weather say too: 8: 56: bags latitude by judgment
33-37 of longitude from lizard 19-46 East

from the 15 to the 16 att non: wind: n: n: w: much
wind say too: East: southerly: 66: bags latitude by
observation 33-50 of longitude from lizard 23-10 East

from the 16 att non to the 17 att non the wind variable
say too: 8: 05: 5: 56: bags in the morning a boat of
the boat we made the day the sugarloaf of the table
bar between the: n: 8: 2: n: 8: 6: 8: some of bags of the
day list in latitude 34-20 longitude in plane from
the meridian of the lizard 26-30 East this morning
and yet first of the reformation having left five
company 2 or 3 days before

from the 17 to the 18 att non say long a long the East
S: E: 6: E: for to the land list between day compass
of day & list say too this 24 hours: 59: bags latitude
by judgment 35-05 of longitude from day 02-30 East
Evening variation of day & list 06-13 west

from the 18 att non to the 19 att non must wind att
w: s: w: say too: 8: n: n: 50: bags latitude 34-56 ~
of longitude from the day 05-00 morning variation
07-35 ending variation 07-49 west

from the 19 to the 20 att non must wind att: w: s: w:
say too: 8: 04: 5: latitude by judgment 34-46 of longitude
from the day 00-10 East

from the 20 att non to the 21 att non the wind between
the: s: w: 0: s: w: 6: s: say too: 8: 40: bags latitude by
judgment 34-46 of longitude from the day 10-00
East morning variation 10-37 west

latitude 33-56
longitude 17-00
variation 03-15
from this place
say long 200: 8:
you shall
fall with day
compass and
that with wood
like trumpets

made compass
latitude 34-20
longitude from
lizard: 26-30
get sight of
the reformation
variation: 03-50

very much wind
latitude 34-46
longitude 00-10

latit
longit
vari

latit
longit
vari

thin
high
in the
no
low
att
of the

July 1629 // August 1629 // 5

from the 21st at non to the 22nd at non the wind variable
between the :w: :s: :e: :w: :s: :e: :w: :s: :e: :w: :s: :e: :w: :s: :e: :w: :s: :e:
of observation 34-57 longitude from the Day: n: 10 East
Ending variation 10-15 west

Latitude 34-57
Longitude 10-15
Variation 10-15

from the 22nd at non to the 23rd at non the wind between
the :s: :w: :e: :w: :s: :e: :w: :s: :e: :w: :s: :e: :w: :s: :e: :w: :s: :e:
34-03 longitude from the Day 13-15 East

from the 23rd at non to the 24th at non the wind -
:w: :s: :w: :e: :w: :s: :e: :w: :s: :e: :w: :s: :e: :w: :s: :e: :w: :s: :e:
32-30 longitude from the Day 15-40 East this
24 howevr very much wind

from the 24th at non to the 25th at non the wind between
the :s: :w: :e: :w: :s: :e: :w: :s: :e: :w: :s: :e: :w: :s: :e: :w: :s: :e:
Judgment 29-34 longitude from the Day 17-44 East
Ending variation 13-45 west

from the 25th at non to the 26th at non the wind variable
between the :s: :w: :e: :w: :s: :e: :w: :s: :e: :w: :s: :e: :w: :s: :e: :w: :s: :e:
by observation 20-30 longitude from the Day 10-40
morning 13-54 ending variation 13-56 East

Latitude 20-30
Longitude 10-40
Variation 13-56

from the 26th at non to the 27th at non the wind
between the :s: :w: :e: :w: :s: :e: :w: :s: :e: :w: :s: :e: :w: :s: :e: :w: :s: :e:
:s: :w: :e: :w: :s: :e: :w: :s: :e: :w: :s: :e: :w: :s: :e: :w: :s: :e: :w: :s: :e:
20-07 longitude from the Day 19-12 East

from the 27th at non to the 28th at non the wind
between the :s: :w: :e: :w: :s: :e: :w: :s: :e: :w: :s: :e: :w: :s: :e: :w: :s: :e: :w: :s: :e:
wind variable :w: :s: :e: :w: :s: :e: :w: :s: :e: :w: :s: :e: :w: :s: :e: :w: :s: :e:
of observation 20-00 longitude from the Day 19-24 East

from the 28th at non to the 29th at non fair weather
between the :w: :s: :e: :w: :s: :e: :w: :s: :e: :w: :s: :e: :w: :s: :e: :w: :s: :e: :w: :s: :e:
little wind :w: :s: :e: :w: :s: :e: :w: :s: :e: :w: :s: :e: :w: :s: :e: :w: :s: :e: :w: :s: :e:
by observation 27-41 longitude from the Day 20-20
East ending variation 15-27 west

from the 29th at non to the 30th at non little wind
between the :w: :s: :e: :w: :s: :e: :w: :s: :e: :w: :s: :e: :w: :s: :e: :w: :s: :e: :w: :s: :e: :w: :s: :e:
between the :w: :s: :e: :w: :s: :e: :w: :s: :e: :w: :s: :e: :w: :s: :e: :w: :s: :e: :w: :s: :e: :w: :s: :e:
by observation 27-06 longitude from the Day 20-00 East
Ending 15-32 west

from the 30th at non to the 31st at non fair weather the
wind :w: :s: :e: :w: :s: :e: :w: :s: :e: :w: :s: :e: :w: :s: :e: :w: :s: :e: :w: :s: :e: :w: :s: :e:
of observation 26-25 longitude from the Day 19-45 East

Thundering and
lightning & rain
in this place
no signs of
foul weather
all this time
of the year

from the last of July at non to the first of August
at non thundering & lightning & howevr of waynd but
little wind :w: :s: :e: :w: :s: :e: :w: :s: :e: :w: :s: :e: :w: :s: :e: :w: :s: :e: :w: :s: :e:
between the :w: :s: :e: :w: :s: :e: :w: :s: :e: :w: :s: :e: :w: :s: :e: :w: :s: :e: :w: :s: :e: :w: :s: :e:
Day 20-10 thundering & lightning how no signs of foul weather

from the first of the month at non lightning all night the wind
between the :s: :w: :e: :w: :s: :e: :w: :s: :e: :w: :s: :e: :w: :s: :e: :w: :s: :e: :w: :s: :e: :w: :s: :e:
of observation 27-10 longitude from the Day 21-30 this day
being fuder to the westward than we expected in: :e: :w: :e: :w: :e:
:w: :s: :e: :w: :s: :e: :w: :s: :e: :w: :s: :e: :w: :s: :e: :w: :s: :e: :w: :s: :e: :w: :s: :e:
for to make August in Day upon faint locant

August 11629

from the forenoon at noon the wind: S: E: S: B: W: fair weather
 sailed: E: 33: N: 36 leagues latitude by observation 23-17
 longitude from the bay 22-50 this day steering in: E: P: E: B: R:
 for to make the land we saw it about 3 of the clock in the
 afternoon in the latitude of 23-10 and there about is the highest
 land of the westernmost part of Saint Lawrence we saw
 it from 10 leagues of our Captains parts with the Reverend
 of observation & told them he thought it fitting the same
 Counting said for to find a way for Joana being the
 intended place for to stop at all a good order to the
 information to get a head being the least ship & to find
 a way between John donoua & the shoulder of Saint Lawrence
 here we made 17-30 of variation from 10 leagues of the shore
 both morning and evening

Crossed the
 tropic of
 Capricorn
 near Saint
 Lawrence in
 latitude
 of 23-10 in
 forenoon to
 get for Joana
 between John
 donoua & the
 shoulder of
 Saint
 Lawrence

from the 3 at noon to the 4 at noon fair weather the wind
 at: S: E: S: B: W: sailed: N: 04: W: 32 leagues latitude by observation
 22-36 longitude from the bay 22-32 longitude from
 August in bay 01-19 west morning variation 17-50 west

from the 4 at noon to the 5 at noon fair weather the wind
 variable upon all points of the compass sailed: W: 33: N:
 10 leagues latitude by observation 21-66 longitude from
 August in bay 01-56 west

latitude 20-03
 longitude 01-59

from the 5 at noon to the 6 at noon fair weather the wind
 at: W: E: W: S: W: sailed: N: 04: W: 21 leagues latitude by observa
 20-03 longitude from August in bay 01-59 west

from the 6 at noon to the 7 at noon fair weather the wind
 between the: S: S: W: E: S: S: E: sailed: N: 11: W: 20 leagues latitude
 by observation 19-02 longitude from August in 02-10: W:
 Evening variation 16-02 west

from the 7 at noon to the 8 at noon fair weather the wind
 W: N: W: sailed: N: 11: E: 27 leagues latitude by observation
 17-41 longitude from August in bay 01-56 west Evening
 16-26 west

made John donoua
 the furthermost
 part of it in
 latitude 17-00
 little low ground

from the 8 at noon to the 9 at noon fair weather the wind
 W: S: W: sailed: N: 15: E: 26 leagues latitude by observation
 16-21 longitude from August in bay 01-36 west this
 morning all of the clock we saw John donoua a little
 low ground & it bore: W: of us from 4 leagues of & nothing
 upon it but wood & deep water no ground for miles
 from it the furthermost part of it lies in latitude 17-00
 & variation 16-20 west

from the 9 to the 10 at noon fair weather the wind: W: P: S: W:
 sailed: N: 22: E: 20 leagues latitude by observation 15-00 longitude
 from August in bay 01-02 west

made the island
 of myaite the
 furthermost end
 of it lies in
 latitude 13-00
 wayed 10 parts
 of 100 out of
 the hold

from the 10 to the 11 at noon fair weather the wind: S: W:
 sailed: N: 22: E: 43 leagues latitude by observation 13-11
 longitude from August in bay 00-12 west this day at
 low of the clock in the afternoon we saw the land of
 myaite the furthermost end of it lies in latitude 13-00
 for men wayed 10 parts of 100 out of the hold

between
 of me
 found
 down
 south
 bay
 a sho
 John
 East
 from
 from
 a va
 from
 way
 John
 from
 mot
 fol
 but
 plan
 of r
 of the
 of the
 a m
 of
 the
 ship
 C. 14
 400
 2. 10
 from

August 1679 // (6)

from the 12th at noon to the 12th at noon fair weather the
wind S.W. by N. N.E. 25 leagues latitude by observation
N. 54 is the fourth part of Johana & it lies N.W. S.E.
the W. end of it is a breadth of the point about a mile
of it lies in the same meridian of Augustin Bay of
Jamaica towards the Island of Molilla & Johana bore N.W. S.
E. 6 N. the southernmost part of Molilla is in latitude
12-15 Augustin Bay & the Island of Johana is in east
longitude from Cap Bon Sprance 22-50 about all the
Islands is 16-00 of west variation the Island of Myrtle
lies N.W. S.E. distant some 15 leagues from Johana
here we found a current to set to the southward our
bark was sent a shore when the westernmost part of Johana
bore N.E. of us & then it made like to the Island the one
like a saddle & the other like a round hummock the narrow
the shore the low current the Island of Somero is very
high land & lies from the west end of Johana N.W. -
distant some 14 leagues Ending variation 17-04 west

between Johana
& molilla we
found a great
current set to
southward our
bark was sent
a shore to Johana
Johana is in
East longitude
from Cap Bon
Sprance 22-50
of variation to
South 16 or 17
west

Johana better
trading than all
molilla & the
holjomer Island
but molilla more
plentiful of
of refreshing
& the cheaper

At the East end
of molilla is
a little rock half
a mile of the point
of the mayn
there gods in the
shape there is 12
C. 14. 15. had
young in here
& Waxwood
downside of the
Island

from the 12th at noon to the 13th at noon plying for to get
into Johana but could not for the current set so
strong to the southward after 3 leagues & worth so that
you must have a good gale of wind that a ship may
run after 5 or 6 leagues & worth or else no getting in
to Johana, Johana is the better road & land ground one
sunter in 25 or 26 fadome the other in 30 fadome &
and to the southward of the Kings town it is a little black
rock on the shore which is the place where for entering
1/4 of a mile of there shall you have one point of the
bay bore N.E. of you & the other which is the westernmost
point bearing W. N.W. of you & in the road there is
low or three watering places & good refreshing of 1/2
in the Island but not like that of molilla Johana is
the holjomer place that first men may live a year without
any & so they do not at molilla molilla is bad
sunter & some ground for to spey & Cablot but things
are the most plentiful there of any Island the cheaper
this 13th at noon being we could not for Johana we
stayed over for molilla unto when place good in meridian
found us all well & from there in health Amou
this 13th all night very little wind

the 14th in the morning in the morning we had the E. end
of molilla N. of us her gods not so great a current
at all Johana the west end of molilla is Island but
where the ships go to ride & water is at the East end
& there is two rocks the one low then the other the
biggest is to see ward the Island where they go to
goe in is half a mile over between the little Island
& the point of the mayn

August 1629

And your founding in its 12 p 13 16: 17 fadome of
water upon the East part of this fland where the
depth is to wit 15 20 22 fadome or you may see
more of in 25 or 27 fadome on this side of the fland
fote a current sometimes to the southwards and sometimes
to the northwards how it ebbe & floweth from 16 fote of
water here is very good respecting for boats & yett
water & oeingot & lomont & Colomute but the entering
is bad wether ground no best one either both our cables
& boy rot nor cut wity wote the best anchoring is when
you have the towne on the top of the hill & a low pit
let a jeger left bring them both in one and anchor in
25 or 26 fadome how we came to anchor in the 14 day
about 3 of the elot in the afternoon how we had 25
fot men went a shore non of those didd nor non of
them quit nor round of the Surrye but somewhat better
then they were how we stay 10 days to water & to ballif
& how our pinte the samuell found us in the latitude
of 13-00 of the fland of my arke she took a small junk
to den wity sand & wood & 100 of blacke men & women
which evening shee took some for to stand for firatt

how the samuell
found us
that taken a little
junk to den
wity sand &
wood & men
& women bound
over from the
northwards of
sant lorenzo
to mussumbils

The 25 about 2 of the elot in the afternoon we wayd
anchor from molila littell wind all this night

The 26 we had very wind all the day at 10: E: & in
the night we were becalmed of Comro

The 27 in the morning we & the reformation yett above
of it but the dysonrie & the pinte were so more the
shore that it was 4 of the elot in the afternoon before
they got above of it we lay a bart staye for them
& about 6 of the elot at night we had the bodie of the
fland of Comro bearing S: W: 6: S: from 6 leagues of

the dysonrie
& the samuell
becalmed elot
under the fland
of Comro

from 6 of the elot the 27 at night to 12 the 28 at non
sawled: n: 17: E: 17 leagues latitude by observation 10-00 &
longitude from Comro 00-25 East

Samuell spent
his for topmast

from the 28 at non to the 29 at non fair weather the
wind att: E: S: E: sawled: n: 17: E: 13 leagues latitude by observation
09-21 & longitude from Comro 00-37 East this 28 in
the night pinte spent his for mast & the 29 she had our
spar for topmast for a fore mast Evening variation 15-00

latitude 05-37
longitude 01-40
variation 15-05
quiter weather
& waynd

from the 29 at non to the 30 at non fair weather the
wind att: S: E: 6: E: sawled: n: 10: E: 32 leagues no observation
longitude from Comro 01-00 East

from the 30 at non to the 31 at non quite weather wity
waynd the wind: S: E: sawled: n: 10: E: 4 4 leagues latitude
by observation 05-37 & longitude from Comro 01-40
East Evening variation 15-05 west

September 1629

13

(7)

from the first of August to the first of September all
non fair weather the wind: S: E: sayled: n: 28: E: 43 leagues -
latitude by observation 03-40 longitude from Comro -
02-50 East Evening variation 15-35 West

from the first all non to the second all non fair weather
the wind: S: E: sayled: n: 39: E: 30 leagues latitude by observation
02-33 longitude from Comro 03-40 East Evening 15-45

from the second all non to the 3 all non fair weather the
wind at: S: S: E: sayled: n: 40: E: 33 leagues latitude by observation
01-15 longitude from Comro 04-50 East Evening variati
15-43 West

from the 3 all non to the 4 all non fair weather the wind
at: S: S: W: sayled: n: 45: E: 37 leagues latitude by observation
00-05 of north latitude crossed the Equinoctial between
10 of the plot in the forenoon longitude from Comro: 05-10

from the 4 all non to the 5 all non fair weather the
wind at: S: S: W: sayled: n: 45: E: 30 leagues latitude by judgment
01-06 longitude from Comro 07-16 East

from the 5 to the 6 all non fair weather the wind at: S: W:
sayled: n: 45: E: 30 leagues latitude by judgment 02-10
longitude from Comro 00-26 East

from the 6 all non to the 7 all non fair weather the wind
at: S: W: sayled: n: 45: E: 30 leagues latitude by judgment
03-14 longitude from Comro 09-24 East

from the 7 all non to the 8 all non fair weather the wind
at: S: W: sayled: E: 41: N: latitude by judgment 04-31
longitude from Comro 10-54 Evening variation 10-15 West

from the 8 all non to the 9 all non fair weather the wind
at: S: W: sayled: E: 41: N: latitude by judgment 05-55
longitude from Comro 12-36 East

from the 9 all non to the 10 all non fair weather the wind
at: S: W: sayled: E: 34: N: 37 leagues latitude by judgment -
07-03 longitude from Comro 14-03 East Evening -
variation 10-06 West

from the 10 to the 11 all non fair weather the wind: S: W:
sayled: E: 45: N: 37 leagues latitude by observation 07-36 and
found a current to set very strong to the south west in
latitude a few fad longitude from Comro 14-33 East variation
10-06 West

from the 11 all non to the 12 all non stormy: n: E: 20 leagues
west 00-06 to the southward of what we had the day before
to give a reason of this current we cannot but in north
latitude of 07-33 E: longitude from Comro 14-13
West variation 10-06 we found this

latitude 03-40
longitude 02-50
variation 15-45

Crossed the
Equinoctial
in longitude from
Comro 05-10

latitude 03-14
longitude 09-24
variation 10-15

A current set
very strong to
the south westward
sayled 20
leagues in 24
hours
left no remnant
of it in latitude
longitude
variation
and so

17 fathoms of
lead...
of you may see
is the of the
vails and...
from 10 fathoms
of...
to but the...
both our...
out...
hill...
and...
in the 14 day
her we had 25
not near of
somewhat better
weather...
in the latitude
took a small...
men...
for...
the non...
night
at: n: E: p
no
variation...
more so...
the non...
to the...
the body of the
leagues of
the 20 all non
variation 10-06
the weather...
latitude by observation
East this...
the had our
variation 15-45
the weather...
no observation
this weather...
leagues latitude
Comro 07-40

September 1629

from the 12th at noon to the 13th at noon fair weather
littell wind att. S. S. E. sayled: n. 41: E: 14 leagues
latitude by observation 00-00 longitude from
Somro 15-04 west East

be calmed great
stor of wrabs
drowd by our
ship

from the 13th at noon to the 14th at noon fair weather
be calmed & great stor of wrabs came drowding
about our ship

a great current
set to the north
wards in 4
days set the
counter way
after 4 or 5 leagues
the north - a

from the 14th at noon to the 15th at noon fair weather
be calmed the 9: 10: 11: 12 days we had a reasonable
gale of wind that a ship might sayle or loage a week
forming n. E. yet we got nothing to the north wards
the 13: 14: 15: 16 days having no wind but to give
the ship stowage way we found the current to help us
to the north wards after 4 leagues the north which was
very strong that sayling n. 20: E: the 15th at noon
we had latitude 10-30 longitude from Somro 16-20
variation 17-24 west

from the 15th at noon to the 16th at noon fair weather litt
wind & found wayne sayled by judgment but of loags
n. 20: E: but by observation we found that we had
sayled 25 leagues latitude by observation 11-26 longitude
from Somro 16-56 East variation 10-65 west

from the 16th at noon to the 17th at noon fair weather
littell wind sayled: n. 25: E: 11 leagues latitude by
observation 12-40 longitude from Somro 17-11: E

from the 17th at noon to the 18th at noon fair weather the
littell wind sayled: n. 39: E: 10 leagues latitude by obser
11-53 longitude from Somro 17-50

rumidg our oxloze
stuck boyles into
hole

from the 18th at noon to the 19th at noon fair weather
littell wind att. n. w. sayled: n. 39: E: 21 leagues latitude
by observation 12-39 longitude from Somro 18-32
East rumidg the oxloze stuck all our boyles of cloth
downe into the hole

from the 19th at noon to the 20th at noon fair weather
be calmed no observation evening variation 18-13

so much calmed
in this place
nowe found by
the that most
have trawled this
way

from the 20th at noon to the 23th at noon be calmed latitude
by observation 12-26 longitude from Somro 18-47: E:
variation 18-33 west so much calmed in this place
nowe found by the that most have trawled this way

from the 23th at noon to the 24th at noon fair weather
the wind n. n. w. sayled: n. 45: E: 13 leagues
latitude by observation 13-00 longitude from Somro
19-17 East

from the 24th at noon to the 25th at noon fair weather
the wind n. n. w. sayled: E: 40: n. 26 leagues latitude
by observation 13-49 longitude from Somro
20-17 East

'Nicholas Sharpe's Journal of the Charles' [8r] (24/80)

September 16 29 // October 1 29 // 8

from the 25th at noon to the 26th at 6 of the clock in the morning fair weather the wind: n. w. b. n. : sailed: n. 45: E: 21 leagues & from 6 of the clock in the morning to 12 at noon we had very much wind & very short duxted weather our Chandle lights so that they which have used the finders the longest never saw the lights this 26 in the afternoon we were soon straggled to bond shots & tarts which we had taken of 3 or 4 days before depending upon the fair weather that men usually met withall in this Contrary the gale continued untill 10 of the clock at night where we a boat to the Eastward & did blow very much att: 8: 5: E:

from the 26th at noon to the 27th at noon sailed: n. 42: E: 11 leagues latitude by observation 17 53 & longitude from Comro 21-21 East

from the 27th at noon to the 28th at noon fair weather the wind: S. S. W. : sailed: n. 22: E: 10 leagues latitude by observation 16-00 & longitude from Comro 21-46 East

from the 28th at noon to the 29th at noon fair weather the wind very little wind att: S. W. : n. 27: E: 14 leagues latitude by observation 16-39 & longitude from Comro 21-50 East Evening variation 16-22 West

from the 29th at noon to the 30th at noon fair weather the wind: n. n. w. : sailed: n. 45: E: 5 leagues latitude by observation 16-56 & longitude from Comro 23-12 East & Evening variation 16-25 West

from the last of September at noon to the first of October at noon fair weather the wind: n. n. w. : sailed: n. 27: E: 20 leagues latitude by observation 17-10 & longitude from Comro 23-30 East Evening variation 15-32 West

from the first at noon to the second at noon fair weather the wind: n. b. w. : sailed: E. 22: n. 16 leagues latitude by observation 17-30 & longitude from Comro 23-50: E: Evening variation 15-34 West

from the second at noon to the third at noon fair weather the wind: n. b. w. : sailed: E. 22: n. 10 leagues latitude by observation 17 50 & longitude from Comro 24-49 & Evening variation 15-25 West

from the 3rd at noon to the 4th at noon fair weather the wind: n. n. w. : sailed: n. 45: E: 24 leagues latitude by observation 18-53 & longitude 25-49 morning variation 18-26 this day at 4 of the clock in the afternoon our Captains sent me in our long boat of for to sound & find ground in latitude 18-45 & longitude 26-00 depth 50 fadham found ground with little stones at bot of gray pease but flat and white

depending upon fair weather met with short duxted weather never or seldom found the lights in this place

latitude 16 39
longitude 21 50
variation 16 22

found ground upon the coast of Endia 50 fadham in latitude 18 45 longitude 26 00

October 1629

latitud 19-40"
dept of water
37 fad some 40
bags of the sand
foundings black
sand

latitud 19-40"
longitud 26-50"
winds blew n:nw
commonly at this
time of the year
on the coast
of Endia

we brayled up
our sayle & came
to anchor in 15 fad
but being hapie
we could not see
the shore no found
the tid to set strong
to the southward how
it flewth s.w.b.w
mound variation
13-47 most for
so list the coast
of Endia

It observed as we
saw the land the
longitud & maid
from Comro to
the coast of Endia
was 27-40 East

The 4 day att 4 of the clock in the afternoon we
found having 50 fad in the latitud of 18-33
longitud 26-00 from Comro from this latitud
if you steer to mak s:n:e. Your so 32 loags which
will be in the latitud of 19-40 you shall have 21 fad
Therefore water for so we found it in latitud 19-40
dept 37 fad we found this day att 12 of the clock
att night had 47 fad having sayled 10 loags n:e.
we found beyond att tow of the clock in the morning
had 45 fad & came att 4 in the morning had
had 43 fad being the 5 day in the morning after
our first founding 50 fad being found with the tide
& morning all the next foundings was blackish sand

from the 4 att noon to the 5 att noon fair weather the
wind n:n:w which blowed so att this place commonly
att this time of the year sayled n:e: 32 loags
latitud by observation 19-40 longitud from Comro
26-50 this day att 11 of the clock in the forenoon in
this latitud we found having 37 fad the ground
soft of it would not stick on the talow this day
att noon we steered in for the shore e:n:e. hoping to
so it be for night between our first founding 50
fad ham in latitud 18-40 to that founding of 37
fad we sayled 20 loags i:n:e. different 21 fad from

The 5 day att noon having latitud 19-40 37 fad
we steered in for the shore e:n:e. till the next morning
being the 6 day att 4 of the clock in the morning
having sayled by Judgment 17 loags & find in brow
shouting att 8 of the clock att night 25 fad
afterwards in the night founding every glass finding
it to shoote 2-3 foot in every glass so that att
4 of the clock the 6 day in the morning we had
15 fad ham brow of ground but being hapie we
could not see the shore so we entered with our bot
& found the tid to set strong to the southward at
in the wind steamed then we brayled up our sayle
& entered with our ship in 15 fad having fitted
our ship for to fight with the portingale if in
chant we met there the tid flewth here n:n:e.
e:s:w. flewth s:s:w. b:w. mound ending
variation the 6 day 13-47 most of so list the
coast of Endia

The 6 day att 9 of the clock in the morning we
wayed anchor the wind att n:e. steered in for the
shore with our harbored tarts abred it being
up that we saw the land all a tide so that in 15
fad the land is plain to be seen the longitud of
maid from Comro to the coast of Endia was 27-40

1000
this
found
winds
loags
shape
bet

the
found
in la

the
mid
hor

loags
dam
barge
the
found
and
off

October 1629

17

row the matter
that as in the
some frakes
swimming 40:50
leaps of the shoe
Chapod a fisher
bett a shoe

the his land of
saint John's lies
in latitude 20-00

Sharp found no
ring in Swallow
howls

Captain Swanley
came aboard in his
bargo & had voyed
the point of the
land for us how
we found 7 foyls
off Dutch Shipt
in Swallow howls

At 3 of the Clock in the afternoon the ported bill
called the sundell bore: E: of us & the tide being spent
we entered from 3 leagues of the shore in 14 fad. here the
matter is at first as in the toamot also here it
many frakes from 40 & 50 leagues of the shore
here our ship Captain Chapod a fisherman a shoer
at 9 of the Clock at night we entered wayed the
wind att: n: E: we stood off from the shore of sea: 15: 16:
17: 18: 19: 20: fad

The 7 day att 3 of the Clock in the morning we came
to & entered the tide being spent in 20 fad being up at
his at having the point of domain: E: b: n: of us
observation att noon 20-26 of latitude & so low domain
the his land of saint John's that shoudly lit a mount
mountain in the Contrid lies in 20-00 we stood in for
the shore the wind: n: E: b: u: at ten of the Clock
in the afternoon we had the towne & Castell of domain
East of us & the his mount within the land: S: E: of
us domain & all low land we entered this afternoon
about 4 of the Clock in 11 fad the towne bearing
E: b: S: of us from 3 leagues of & att 10 of the Clock
this night we wayed & stood off the wind att: n: E:
into: 14: 15: fad & stood in againe into 10 fad from
& of againe into a 11 fad when the weather most
his humort bore: S: E: of you then are you 9 leagues
from the bar of Swallow

The 8 day att 10 of the Clock in the forenoon we wayed
and stood in for the shore into 7 fad & of againe into
13 & 14 fad this day att 5 of the Clock in the afternoon
we came to anchor in 8 fad & saw the shipt
riding in Swallow

The 9 day about 9 of the Clock in the morning Captain
Swanley came aboard of us in his bargo having voyed
from the southward but 3 days before in the Johnat
this day in the afternoon we went over the bar of
Swallow having 4 fad & 5 fad att half flood the
land was voyed for us by the Johnat above we found
7 foyls of Dutch Shipt riding in the Swallow howls
we stayed until the 17 of September & then voyed
to god for pearrie & all the while we were
here we found very fair weather being a fall in this
Contrid att this time of the year for in the
monthes of may June & July August & September
this Contrid is under flood with voyed riding foyls
in aboundance

the afternoon
att 10-22
in this latitude
up to 32 leagues
in shall have 27
it in latitude
att 12 of the
payed 10 leagues
Clock in the
the morning
the morning
found with the
was black the
in fair weather
the globe
N: E: 32 leagues
distance from
it in the forenoon
37 fad the
to follow this
N: E: N: E: 40
the found
at founding of
19-40 & 37
the night
in the morning
bags & find in
night 25 fad
ending of
glaf so that
meeting we had
being kept
trud with out
the southward
to see our
handing
at night
the hour
morning
of led the
morning
stood in for
at
the length
ending

September 1629 //

September the 5 day
the samull frigg m
west wirt portingale

wayed out of swalo
hould entered
oude the bar our
president tot hit
band of our ships
being 3 English
6 sayle of flomings
6 sayle of swatt
6 sayle of fratt
all bound
for portie

the 17 of september the Charles & the Johnat
wayed out of swallow hould & entered oude the
bar for the west of the fleet

the 18 the Diffrondie & the reformation wayed
from swallow & came oude the bar wirt 6 sayle
of flomings

the 19 our president tot hit band of our ships
this day att 6 of the clock in the after noon all
our fleet wayed with 6 sayle of swatt Junts
all bound for portie & entered up on the coast
att 9 of the clock att night

the 20 in the morning we wayed att 7 of the clock
& entered no more having a gale of wind for to the
the did this night att 6 of the clock the hie band
of saint Johnat bore S: E: 6: E: from 7 leagues of & we
saw 6 sayle of portingall frigots men of war
riding upon the coast

the 21 att 6 of the clock att night one flomings
bound for the southward tot hit band

from the 21 att noon to the 22 att noon fair weather
the wind: n: n: e: p: n: e: b: n: latitude by observation
19-40 longitude from saint Johnat or his west

from the 22 att noon to the 23 att noon fair weather
the wind: n: p: n: n: w: sayled: w: 32 leagues latitude
by judgment 19-40 longitude from saint Johnat
03-45 west

from the 23 att noon to the 24 att noon faire weath
the wind: n: n: e: p: n: e: sayled: w: 33: n: 33 leagues
latitude by judgment 20-40 longitude from saint
Johnat 05-02 west this 23 att midnight ff sprang
my mast in the pade just the 24 day Cap Thom:
sprang his mayn topmast & the Antboxall
of the Dutch sprung his mayn mast

from the 24 att noon to the 25 att noon faire weather
the wind n: e: p: n: n: e: sayled: w: 33: n: 36 leagues
latitude by observation 21-40 longitude from saint
Johnat 06-40 west

from the 25 att noon to the 26 att noon faire weath
the wind: n: e: p: n: n: e: sayled: w: 30: n: 30 leagues
latitude by judgment 22-40 longitude from saint Johnat
07-45 west

from the 26 att noon to the 29 att noon faire weather very little
wind wirt Calmes sayled: w: n: w: 30 west by 30 leagues
latitude by observation 23-40 longitude from saint
Johnat 09-15 west variation 17-10 west

6 sayle of portingall
frigots men of
war send up on
the coast

the pade just sprang
his mast & Cap Thom:
sprang his
mayn topmast the
Dutch Antboxall
sprang
his mayn mast

latitude
longitu
wind
Calme
ragn

latitu
of the
bor
them
our
had

latitu
longitu
of lo
land
whit
beach
no to
weath
sprung

		<p>September // 1629 // Januario // 1629 // 19 (10)</p>
<p>the John embred oute</p>		<p>from the 29 att non to the 30 att non fair weather bottell wind att: w: s: w: s: w: say too: n: 10: bags latitude by judgment 23-40 longitude from point johnd 09-15</p>
<p>ation maye e nyste 6</p>	<p>latitude 24 00 longitude 09 45 wind variable calmsd west rayne</p>	<p>from the 30 att non to the 31 att non fair weather the wind variable between the: n: & the: w: little wind say too: w: s: w: som 8 bags latitude by judgment 23-30 longitude from point johnd 09-45</p>
<p>of our after north on the</p>		<p>from the last of September att non to the first of Januario att non the wind very variable between the n: & the: w: with calmsd & som showers say too: n: by judgment 12 bags latitude by observation 27-00 longitude from point johnd 09-45 west</p>
<p>4 of the wind for the bags of non of</p>		<p>from the first att non to the third att non fair weather the wind: n: w: say too: n: 22: E: 17 bags latitude by observation 24-50 longitude from point johnd 09-33 west in this latitude longitude not far land</p>
<p>me fair by or</p>		<p>from the 3 att non to the 4 att non much wind att: w: n: w: beginning att 6 of the clock the 3 day att night & lasted till 8 of the clock the 4 day att night no sted of s: 3 weather som 9 bags & 3 weather in agone for the the latitude by judgment 24-40 longitude from point johnd 09-33 west</p>
<p>u bags point</p>		<p>from the 4 att non to the 5 att non fair weather but dark & glumid the wind: w: n: w: latitude by judgment 24-25 longitude from point johnd 09-24 west</p>
<p>en 3: n: 33 d right ay the</p>	<p>left Company of the Flemings bor runid for them put out our lights but had no answer</p>	<p>from the 5 att non to the 6 att non fair weather the wind: n: w: latitude by observation 24-40 longitude from point johnd 09-47 west</p>
<p>ave 36 from</p>	<p>latitude 25-10 longitude 11-50 Clock aboard the land his ragged whit Cliffe lit board his told no current dep weather not ground in Dofa</p>	<p>from the 6 att non to the 7 att non fair weather but much wind in the night att 6 of the clock we bee up wind for the Flemings the wind att: n: w: & they coming: s: w: from us we put out our lights but they en/nowed with non & 12 of the clock the 6 day att night the wind came att: n: p: n: b: E: & then we sted to the westward keeping our lights out but lost the Flemings this latitude by judgment 24-50 longitude from point johnd 10-32 west</p>
<p>ave n: 30 m the 30 from</p>		<p>from the 7 att non to the 8 att non fair the wind: n: E: & n: n: E: say too: n: 22: w: 24 bags latitude by judgment 25-10 longitude from point johnd 11-15 west the D day in the morning we went Clock aboard the land in this latitude & longitude 15 good his ragged land & whit Cliffe lit board a very told Cliffe dep weather & no current we peared out so far of land but no ground</p>

January 16 29

latitude 27-40
longitude 11-33
we met with the
flamingo our Con-
sorts but left
the Company of
the Gullies all
but one

we entered the
mouth of the
gulfe being in
latitude 25-20
longitude 13-52
west from Saint
Johns

we entered before
gastub all our
flight had my
Cumbarrak bearing
n:n:w

from the 8 att non to the 9 att non faire weather
the wind n:n:w. say too: 5:33: w: 14 leagues latitude
by observation 27-40 longitude from Saint Johns
11-33 west this 9 day att 6 of the clock in the
morning we met with the flamingo our Consorts
and all stood in for the shore till non

from the 9 att non to the 10 att non faire weather
the wind n:n:e. a frotte gull we say too a lought the
Coast w:b:n: it is very his whit bluffs latitude by
observation 25-14 longitude from Saint Johns
12-50 west

from the 10 to the 11 att non faire weather the wind
n:n:e. n:n:e. very small gull say too a lought the
Coast w:b:n: by Judgment 8 leagues

from the 11 to the 12 att non faire weather littoll wind
n:n:e. n:n:w. say too a lought the Coast w:b:n: some
12 leagues latitude by observation 25-12 longitude
from Saint Johns 13-43 west

from the 12 att non to the 13 att non faire weather
littoll wind with Calmed this 13 in the morning we
made the his land on the e: shore which makes the
Entrie of the gulfe being 14 leagues from gastub it
showeth hit a mountaine his to the eastward of gale
to the westward when it beares betwene the n p
n:n:w. of you then have you latitude 25-20 longitude
from Saint Johns 13-52 west

from the 13 to the 14 att non Calmed latitude by
observation 25-20 longitude from Saint Johns
14 west

from the 14 att non to the 15 att non be Calmed
4 or 5 leagues of the shore latitude 25-20 longitude
from Saint Johns 14-26 west

from the 15 att non to the 16 att non the wind n:n:w.
aright out of the mouthe of the gulfe some beuty the
lands & got nothing this 24 hours

from the 16 att non to the 17 att non the wind n:n:w.
we turned it up betwene the rabin & gastub getting little

from the 17 att non to the 18 att non the wind n:n:w. the
17 day att 6 of the clock att night we entered before
gastub in 10 fad of water & all the howle flect with
at the point of the gulfe of the rabin shore bearing
n:n:w. the point of the rabin shore bearing
from it the 18 day in the morning we wayed heading
westward the wind n:n:w. stood of towards the
westward all this day till 12 of the clock att night
it proved Calmed from 12 of the clock the 18 att night till 12 of
the clock the 19 att non

very
no le
all n
the p
mo

thund
very
Callu
East
6 top
over
suffe

maye
Som
to be
Ship

wand
to rom

wand
moru
say lo
5
all
su

January 1629 // February 1629 // 21 (11)

The 19th at noon came a fair wind betwixt the S.W. C.S.E. which set us into the gulfe storming away N.N.W. betwixt the to land the wind increasing very much so that at 8 of the clock at night all our fleet lay a hull till day light the next morning

The 20th day at 8 of the clock in the morning be stood in betwixt armouze & wlat we yaud the Castell of tismor 3 peeres of ordnance & the Castell of armouze 3 peeres the wind chopt up westerly very thirt weather with thundering & lightning & rained we entered in 6 fad handing the midst of the hid hill ouer Commdrun bearing N of us then it the Castell of armouze S.E. 6.S. of you & the northmost end of wlat bearing south of you

The 21st day of february we wayed from Commdrun to god for armouze for to ballast our ships the Charles the Johnat the Diferousid & the reformation very little wind the Castell of armouze & the road of Commdrun bearing N.W. 6.W. C.S.E. 6.S. you may steer from the road of Commdrun right with the Castell & you shall haue 5. p. 6. fad till you com within shot of armouze Castell & then the water doth deapn you may borrow wlat a bow the fland is not in musket shot of the Castell is 9. 10. fad of water bring the Castell W.N.W. of you & later shot of & wery good noing

The 22nd day we wayed from armouze to Commdrun the wind southerly & entered in the road of Commdrun about 5 of the clock in the afternoon the same day handing 5 fad handing the mid off of the hid land ouer Commdrun bearing N.E. N.W. some 3 miles of the towne

The 23rd day we wayed from Commdrun the Charles the Johnat the Diferousid & reformation & entered what of tismor Castell till the 25th day in the morning & then we wayed & steered to way with 6 short foyls storming for our comforts the flommings being 6 foyls all this 25th day night we boarded out our lights for them & 5 foyls of furratt Junts that went in our company all bound for furratt

very much wind
no lay a hull
all night till
the next day
morning

thundering & lightning
rained
Castell with
6 peeres of
ordnance
entered in Commdrun

wayed from
Commdrun to god
to ballast our
ships

wayed from armouze
to Commdrun againe

wayed from Com
mdrun with 6
foyls of flommings
& 5 furratt Junts
all bound for
furratt

February // 1629 // March // 1629 //

The 26 day in the morning we saw them & had
for them and at 10 of the clock having the
northmost gland on the cabin show bearing
west of us the hour between armours & gaffes
is: 5: 6: 8: 9: 11: 6: 11: 7 when the northmost gland
on the cabin show bore: ~~was~~ of you then may you
so relate & armours the gland entering at the
mouth of the gulfe where it on the Easton side
is called bumbarrat & that of gaffes: 5: 8: 6: 8: 7: 11: 6: 6

The 27 day at 5 of the clock at night bumbarrat
bore: 8: 5: 8: of us from 3 leagues of little wind

The 28 at 12 of the clock at noon bumbarrat bore
11: 8: of us the wind: 8: 6: w: fair weather & at 6 of
the clock at night it bore: 11: 11: w: & at you sail
alongst this bay between bumbarrat & Cap gaffes is
parts of red water tow leagues of the shore & you
shall find: 22: 23: 24: fair weather

from the last of february at noon to the first of
march at noon fair weather the wind: 8: 6: w: 8: 6: w:
hour: 18: 8: 6: 8: found 12 leagues:

from the first at noon to the second at noon fair wea
the wind: 8: w: fayled by Judgment: 8: 45: 8: 12 leagues
latitud by Judgment 25-14 & longitud from bumbarrat
00-55 East

from the second at noon to the third at noon fair
weather the wind variable between the: 8: w: & 11: w:
fayled: 8: 22: 8: 10: leagues latitud by observation
24-40 & longitud from bumbarrat 01-40 East

from the 3 at noon to the 4 at noon fair weather
the between the: w: & 8: w: fayled: 8: 22-5: 10 leagues
latitud by Judgment 24-40 & longitud from
bumbarrat 02-16 East

from the 4 to the 5 at noon fair weather the wind between
the: 8: w: & w: fayled: 8: 33: 8: 10: leagues latitud by obser
24-10 & longitud from bumbarrat 03-05 East

from the 5 at noon to the 6 at noon fair weather
the wind between the: w: & 8: w: fayled: 8: 33: 8:
21 leagues latitud by observation 23-33 & longitud
from bumbarrat 03-56 East this day about
4 11 of the clock in the morning we crossed
the tropicks of Cancer ~

we met with
with the following
of several founts

In the bay of
from gaffes
is parts of
red water

latitud
longitud

latitud
longitud

latitud
longitud

latitud
longitud

Crossed the
tropick of
Cancer

// March // 1629 // 23 (12)

from the 6 att non to the 7 att non fair weather
the wind: S: W: foyled: S: E: 6: E: 20 bags latitude
by observation 23 of longitude from Cumberland
04-46

from the 7 att non to the 8 att non fair weather
the wind betwene the: W: S: W: foyled: E: 33: S:
20 bags latitude by observation 22-20 of longitude
from Cumberland 05-33 East

from the 8 att non to the 9 att non fair weather the
the wind: S: 45: W: foyled: E: 22: S: 25 bags latitude
by observation 21-54 of longitude from Cumberland
06-40 East

from the 9 att non to the 10 att non fair weather
the wind betwene the: W: S: N: W: foyled: E: 22: S:
30: bags latitude by observation 21-17 of longitude
from Cumberland 08-03 East

from the 10 att non to the 11 att non fair weather
the: W: S: N: W: foyled: E: 22: S: 22 bags latitude
by observation 20-54 of longitude from Cumberland
09-03 East

from the 11 att non to the 12 att non fair weather the variable
betwene the: N: S: the: W: foyled: E: 22: S: 25 bags
latitude by observation by observation 20-25 of
longitude from Cumberland 10-05 East

from the 12 att non to the 13 att non fair weather
the wind variable betwene the: W: S: N: N: W: foyled
E: 07: S: 34 bags latitude by observation 20-15
of longitude from Cumberland 11-40 East this 13
day at 4 of the clock in the morning we founde
we had 42 fad in latitude 20-23 of by judgement
found 6 bags of from due head from 12 of the
clock att non this 13 day we heard: E: 6: S: for
to fall west the east of India in 20-00 of latitude
which is holding every good //

from the 13 att non to the 14 att non fair weather
the wind variable betwene the N: the W: foyled
E: 17: S: 20 bags after the holding of 42 fad
we had: 33: 27: 23: 21: 10 when due head
box: N: 6: E: latitude by observation 19-43
of longitude from Cumberland 12-32 East

// March // 16 29 //

from the 14th at noon to the 15th at noon fair weather
the wind variable fair to East 20 leagues latitude
19-43 longitude from Cumberland 17-35 East
then the his land of Saint John bar E of us for
26 leagues of then shall you have 17 fad of the
water aboard that morning at 6 of the clock
we saw 16 saile of frigates stand to the westward
but come to windward of us we could not tell
what they meant to fall with the West of India
god not to the northward of 20-00 of latitude
& 70 leagues of you shall have euen freedom by day
till you com in: S: E: 7: fad of no danger in the way
the tid upon the West settel: n: n: E: p: S: S: W:
of flew at S: S: W: S: W: mound in 20-30 of latitude
found 4 leagues of the shore between the sand of Edmond
it thirt matter hit the toandt

the 16th in the morning a bout tow of the clock it
proued calm & the tid of flood being done we
anchored in 13 fad of water & at 8 of the clock
in the morning we wayed with the flood & saw
the great of furcatt & 6 saile of frigates which
had one letter for our Commander & another for
the Commander of the Dutch when upon was called
a consultation on both sides for what we were att
pointe there was 15 saile of portmhall frigates &
5 saile of galions which were thought for to
look for us but we saw them not from 5 or 6 leagues
of the shore storming in from 15 fad you shall have
14: 13: 12: 11: 10: 9: 8: fad till you com to the
bar & after you see the pagor which sheweth like
a round mouth at it might be the ruine of toandt
with tow bushes like trees when they be: E: n: E:
of you then shall you raise the trees of old swallen
& so tow to id trees stand upon the point to the
westward of swallen from pagor to the bar the
course it is: n: p: n: S: W: if you red without the
bar being the tow to id trees in end & then they
be: E: n: E: of you & then shall you red in: 10: 11:
& 12 fad & if you are to god in to swallen
howls having any wind for to stem the tid the
nearer to the shore the less tid & if it proued calm
the better for to god in

latitude 19 -- 43
longitude 17 -- 35
16 saile of portmhall
frigates seen standing
to the westward

the great photo
of furcatt & 6 saile
of frigates which
upon the West had
one letter for our
Commander & another
for the Dutch &
consultation on
both sides

to red without
swallow bar being
the tow to id
trees in end &
then they be: E:
n: E: 7: 10: 11:
12 fad from

our
from
swaller
on fad

the re
out the
from
to god

made
just
not a
into

saile
the
6 or
in 20
matter
nothin

the
3 or 4
and
from
the n
you

//march//1629// //April//1630// 25 (B)

the 17 day att 12 of the clock att night the wind
was all foule and for to found the bar of swallow
to be in the shoalest water to show them
by woff the Dept of water for the ships to
goe into the houlde there it but 2 fad on the
middle ground att low water of the mayn shoar
att the best for to borrow no

the 12 of April 1630 the shallop of Johnat De-france
reformation wayed out of swallow houlde of antred
over the bar having the todes toots bearing E.N.E:
of vt of 11 fad of water when the westernmost tode
was of the thirt bunch of toots att old swallow be in
one then are you upon the bar of att low water you
shall find tow fad ham of tow fad ham of $\frac{1}{2}$ rom with in
thre fad of the tayle of the sand att quarter the
of found nothing

the 13 we we without the bar of pro fadent wile
came aboard of the 14 in the morning we wile
jurisdiction by his authoritie unto master shob
the day att non being his matter we wiled the wind
N.W. for morris shot in tending for to winter there

the 15 fair weather the wind: W. N.W. att 6 of the
clock att night we had the sun all bearing: E. of vt
from 8 leagues of the shoar: 7: 13: 14: 15: fad of water
the 16 fair weather the wind: W. S.W. latitude 19-30
found my: 16: 7: 17: fad of water

from the 16 att non to the 17 att no fair weather the
wind: N.W. sayling alongt the shoar from 6 or 7
leagues of 20 fad of water so you may sayl alongt
the coast of Endia of found nothing

from the 17 att non to the 18 att non fair weather
the wind: N.W. sayling alongt the coast: E. S. S.
latitude by observation 16-43

from the 18 att non to the 19 att non fair weather
the wind: N. E. N. W. this day no observation
the some our joint att non we had 5 flandrs whith
had some 12 leagues to the norwards of goa of they
be east of vt they lie about a league from the
shoar of there is no opening between the shoar of them
we lost them for sayl till we had well wayed
them

our ships wayed
from without
swallow bar
antred in the houlde

the 12 of April
our ships wayed
from swallow
to goe for juylar

master wile
jurisdiction by
his authoritie
unto master shob

sayl alongt
the coast of Endia
6 or 7 leagues of
in 20 fad ham of
water of found
nothing

the some our
joint of flandrs
some whith had
some 12 leagues to
the norwards of
goa

April 1630 // May 1630 //

from the 19 to the 20 at noon fair weather
the wind n.e. n.e. w. sailing & length the 19th
south & by east the 20: 21: 22: days but the 23
24: 25: 26: Days very much thundering & rays
the 25 day the Dutch flight parted from us about
the latitude of 10-00

from the 26 at noon to the 27 at noon much rain
the wind variable the 27 about noon it cleared &
we had observation 00-30 the wind shifted
four or five & we stood in for the shore for to make
the Bay land of Commdum

from the 27 at noon to the 28 at noon indifferent
fair weather the wind s.e. s.e. w. sailing 15: 11: 8
15 leagues latitude by observation 07-56 longitude
from Bay Commdum 00-36 west the day at noon
Bay Commdum ber: 8: 6: n. of us by Judgment from
12 leagues of

from the 28 at noon to the 29 at noon fair weather
the wind s.w. s.w. w. sailing 15: 11: 8: 20 leagues
latitude by observation 07-25 heading Bay Commdum
n. of us from 12 leagues of

from the 29 at noon to the 30 at noon fair weather
the wind s.w. sailing 15: 11: 8: 17 leagues & humid
weather no observation

from the first of April at noon to the first of May
at noon fair weather the wind w. s.w. s.w. sailing
15: 11: 8: 25 leagues latitude by observation 04-56
longitude from Bay Commdum 00-44 East

from the first at noon to the second at noon fair
weather the wind w. s.w. s.w. sailing 15: 11: 8: 40 leagues
latitude by observation 02-42 longitude from
Bay Commdum 01-09 East ending variation
12-45 west here we found a current which
set to the southward heading in two days differed
in latitude 03-40 but by Judgment we differed
no more but 02-56

from the second at noon to the third at noon fair
weather the wind w. s.w. s.w. sailing 15: 11: 8:
35 leagues latitude by observation 01-00 longitude
from Bay Commdum 01-32 East

very much rain
thundering &
lightning upon the
Coast of India
Departed from the
Dutch flight in
the latitude of
10-00

Crossed the meridians
off Bay Commdum

latitude 02-42
longitude 01-09
variation 12-45
found a current
set to the southward

latitude
longitude
variation

		<p style="text-align: right;">27 (14)</p> <p style="text-align: center;">May 1630</p> <p>from the third att non to the 4 att non fair weather the wind: w: s: w: sayled: s: 11: E: 20 leagues latitude by observation 00-10 south of longitude from Cap Commodore 01-47 East this day about 10 of the clock in the forenoon crossed the Equator</p> <p>from the 4 att non to the 5 att non fair weather the wind: w: s: w: E: s: w: sayled: s: 22: E: 14 leagues latitude by observation 00-33 south of longitude from Cap Commodore 01-57 East</p> <p>from the 5 att non to the 6 att non fair weather the wind betwixt the: s: w: b: s: E: w: s: w: sayled: s: 22: E: 10 leagues latitude by observation 00-59 south of longit from Cap Commodore 01-07 East</p> <p>from the 6 att non to the 7 att non fair weather the wind: s: E: s: s: w: sayled: s: 45: E: 20 leagues latitude by observation 01-37 south of longitude from Cap Commodore 02-52 East</p> <p>from the 7 att non to the 8 att non fair weather the wind variable sayled: s: 22: E: 11 leagues latitude latitude by judgment 02-00 of longitude from Cap Commodore 03-12 East</p> <p>from the 8 att non to the 9 att non becalmed</p> <p>from the 9 att non to the 10 att non the wind variable with gusts & rayns sayled: s: 20 leagues latitude by judgment 03-15 of longitude from Cap Commodore 03-12 East</p> <p>from the 10 att non to the 11 att non the wind variable rayns & gusts weather sayled: s: 11: w: 11 leagues latitude by judgment 03-42 of longitude from Cap Commodore 03-02 East</p> <p>from the 11 att non to the 12 att non wind variable with rayns & gusts sayled: s: 11: w: 10 leagues latitude by judgment 04-11 of longitude from Cap Commodore 02-52</p> <p>from the 12 att non to the 13 att non wind variable rayns & gusts sayled: s: 22: w: 09 leagues latitude by judgment 04-53 of longitude from Cap Commodore 02-37 East</p> <p>from the 13 att non to the 14 att non wind variable rayns & gusts sayled: s: 22: w: 22 leagues latitude by judgment 05-35 of longitude from Cap Commodore 02-12 East</p>
<p>May 1630</p> <p>four months right the day but the humid from the</p>	<p>Crossed the Equator of longitude from Cap Commodore 01-47 East</p>	
<p>a much at 10 wind for to mat</p>	<p>latitude 02-00 longitude 03-12 East</p>	
<p>indiffer by 11: 11: 6 -56 the day Judgment</p>	<p>latitude 02-00 longitude 03-12 East</p>	
<p>four months 45: 8: 20 Cap Com</p>	<p>latitude 04-11 longitude 02-52 rayns & gusts</p>	
<p>in four leagues fixt of w: s: w: w: tion 04-5 14 East</p>	<p>latitude 04-11 longitude 02-52 rayns & gusts</p>	
<p>at non s: 11: E: 4 from variation at north and differ to differ</p>	<p>latitude 04-11 longitude 02-52 rayns & gusts</p>	

May 1630

latitud $06-10''$
longitud $01-55''$
quith of wind
and way no

from the 14 att non to the 15 att non the wind
variable way no and quith say to: S: 2: W: from
15 days latitud by observation $06-10''$ & longitud
from Day Commencement $01-55''$ East

from the 15 att non to the 16 att non wind variable
say to: S: 11: W: 07 days latitud by judgment $06-10''$
& longitud from Day Commencement $01-55''$ East

from the 16 att non to the 17 att non wind -
variable say to: S: 11: W: 12 days latitud by
observation $06-45''$ & longitud from Day Comm
 $01-10''$ East

from the 17 att non to the 18 att non wind variat
say to: S: 33: W: 15 days latitud by observation
 $07-10''$ & longitud from Day Commencement $01-03''$ E

from the 18 att non to the 19 att non fair weather
the wind between the: S: E: & S: S: E: say to: S: 33: W:
35 days latitud by observation $08-36''$ & longitud
from Day Commencement $00-37''$ East

latitud $10-10''$
longitud $00-27''$
Even variation $09-20''$
Crossed the meridian
of Day Commencement

from the 19 att non to the 20 att non fair weather
the wind: S: S: E: say to: S: 40: W: 37 days latitud
by observation $10-10''$ & longitud from Day Com
 $00-27''$ west crossed the meridian of Day Commencement
Evening variation $09-20''$ west

from the 20 att non to the 21 att non fair weather
the wind: S: S: E: say to: S: 45: W: 36 days latitud
by observation $11-20''$ & longitud from Day
Commencement $01-47''$ west evening variation $10-45''$ W

from the 21 att non to the 22 att non fair weather
the wind: S: S: E: say to: S: 45: W: 27 days
latitud by observation $12-10''$ & longitud from
Day Commencement $02-45''$ west evening variation
 $11-16''$ west

latitud $13-20''$
longitud $05-06''$
variation $15-56''$

from the 22 att non to the 23 att non fair weather
the wind: S: S: E: say to: W: 39: S: 33 days
latitud by observation $13-20''$ & longitud from
Day Commencement $03-50''$ west evening variation $12-57''$ W

from the 23 att non to the 24 att non fair weather the
wind: S: S: E: say to: W: 30: S: 25 days latitud
by observation $14-06''$ & longitud from Day
Commencement $05-00''$ west morning variation $15-13''$
Evening variation $15-56''$ west

	11 May 1630	12 June 1630	20 (15)	
	from the 24 th att non to the 25 th att non fair weather the wind: S. C. S. B. E. sayled: W. 45. S. 24 leagues latitude by observation 27-59 longitude from Cap Commerin 05-52 west	from the 25 th att non to the 26 th att non fair weather the wind: S. B. E. C. S. S. E. sayled: S. 45. W. 26 leagues latitude by Judgment 15-57 longitude from Cap Commerin 06-50 west	from the 26 th att non to the 27 th att non fair weather the wind: S. B. E. C. S. S. E. sayled: S. 45. W. 37 leagues latitude by observation 17-15 longitude from Cap Commerin 07-50 west variation 16-13. W.	from the 27 th att non to the 28 th att non fair weather the: S. C. S. B. E. sayled: W. 33. S. 38 leagues latitude by observation 18-10 longitude from Cap Commerin 09-34 west variation 20-30
latitude -15-37 longitude -06-50	latitude -19-15 longitude 11-40 variation 21-12	latitude -19-40 longitude 10-10 variation 23-50		
	from the 28 th att non to the 29 th att non fair weather the wind: S. C. S. B. E. sayled: W. 33. S. 37 leagues latitude by observation 19-45 longitude from Cap Commerin 11-40 west morning variation 20-50 Ending variation 21-12 west	from the 29 th att non to the 30 th att non fair weather the wind: S. C. S. B. E. sayled: W. 11. S. 37 leagues latitude by observation 19-40 longitude from Cap Commerin 13-30 west morning variation 21-56 Ending variation 22-24 west	from the 30 th att non to the 31 st att non fair weather the wind: S. C. S. B. E. sayled: W. 06. S. 38 leagues latitude by observation 19-55 longitude from Cap Commerin 15-30 west morning variation 22-40 Ending variation 23-24 west	
	from the last of may att non to the first of June att non fair weather but somewhat mistie the wind: S. C. S. B. E. sayled west 42 leagues latitude by Judgment 19-56 longitude from Cap Commerin 17-34 west	from the first att non to the second att non fair weather the wind: S. S. E. sayled west 26 leagues latitude by observa 20-05 longitude from Cap Commerin 18-40 variation 23-50 The first of June att att 09 of the clock att night we tol in our top sayled & brayed by our main sayle for sayle & lay a third part our main till 5 of the clock the second day in the morning when we set sayle at 6 of the clock in the morning we saw the Island of Deliquet at 10. E. off the top of 8 or 9 leagues of the southermost part of the Island had in latitude 19-46 longitude from Cap Commerin 18-16 reasonable his land		

June 1630

latitude $20-03''$
longitude $20-40''$
variation $25-10''$

from the second at noon to the third at noon fair weather the $S: S: E: r: S: S: E:$ sayed $w: 02: S: 37$ leagues latitude by observation $20-03''$ longitude from Cap Comodori $20-40''$ west morning variation $25-00''$ evening variation $25-10''$

The Island morisshot
latitude $20-03''$
longitude $22-30''$
from Cap Comodori
variation $25-10''$

from the 3 at noon to the 4 at noon fair weather the $S: S: E: r: S: S: E:$ sayed $w: 36$ leagues latitude by observation $20-03''$ longitude from Cap Comodori $22-30''$ west so that if you come from the Eastwards & your purpose to fall with the morisshot the bow of the Island lies in $20-03''$ & if you shall come to meet the Island of Deliquat it lies in latitude $19-50''$ longitude from Cap Comodori $20-40''$ west reasonable Euen had time then may you run 90 leagues west keeping your self in that latitude of $20-03''$ so the morisshot falling with the very bodie of the Island I may here $25-00''$ of variation west this Island by Judgment is in length 12 or 13 leagues being $S: W: r: N: E:$ at the $N: E:$ end is a long low point & to the westwards of it is 4 small Islands which you must stand on your starboard side & fear no danger for it is they to the shore the highest Island on this Island is called portent butte head it owes to the west of the land & in both sides a full of the Island that is nearest to the mayne Island the Chastell is ouer about half a mile & there lies a breadth of the point of the mayne Island but keep you withing a musket shot of the small Island & stand nothing for you shall have 10 or $20-24: 25$ fad between them & after you are shot within this Island you may borrow on the shore on the mayne Island & about a fathom shot of you shall have $10: 20$ fad for if the Easterly wind blow you shall have the wind of the shore therefore borrow at near the shore as you then for if it blow hard & that you have no ground to anchor you cannot see the shore against & right against the weathering place you shall have $S: 9: 10: 11$ fad a fathom shot from the shore & keep that distance & you shall have the land deapt till you have portent butte head being $S: E: 6: 8:$ of you & then are you open of the harbor & there you may ride in 10 or 12 fad but fewe ground here is planted of no refreshing for beards & hogs & geese & fowls & fish & wood & water & oxmydd & palmata drink

The highest land on the morisshot called portent butte head & is not like unto a hill in the middle of Island

had entering upon $N: W:$ to morisshot except in the harbor but here is great store of refreshing for beards & hogs & geese & fowls & fish & wood & oxmydd & great store of palmata drink

June 1630

31 16

here is abundance of palmeta wine & fimmor
 gland cannot be in the world for refreshing
 but here it had nothing for sleep except you go
 into the harbor & then it matters enough of
 the reformation of Diouid and against the matter
 please the reformation left tow antons Diouid
 and anton the Charles brot a stable but yet the
 anton against no hunted on the n. e. end of the
 gland when are abundant of bread ponds for boaster
 & fowls but the hogs & yots are very hard
 bare in June & July being ventor till the fruit
 on the trees be ripe

The 4 day at 6 of the clock at night we went to
 anton in 10 fad in a fennie bay being shot in mist
 my the gland on the n. e. end till the 5 day in
 the morning & then we wayed having the wind
 of the shore all s. s. e. & about 11 of the clock
 we went to anton all the harbor mouth having
 poster but head s. e. b. s. of us but fowls yownd
 & here we had till the 19 in the morning that night
 we got all our people a board went tow first maid
 & we mist not a man nor Captains franyle
 weather & to see what they first went our Captin
 Gaupdo Captains for to send his barg a shore
 when they came somewhat near they saw men
 to their thinking run to & against with fire brands
 in their hands & the north they would to them the
 further they went of they maid a noyl hit
 whistling that in the barg and and hollowed
 to them but had no answer so we think they
 were Doublt or else men which the flammings
 have left there and are distressed which may
 be very like

The 19 in the morning we wayed the wind at
 s. b. e. somewhat thick weather & at 6
 of the clock at night the southmost
 point of the gland of more shot bore s. e. b. e.
 from us 10 ways of & from 6 of the
 clock the 19 at night to 12 of the clock
 the 20 at noon sailed s. w. 15 ways &
 latitude by observation 20 - 50

more shot a brown
 gland for refresh
 no hunted on the
 n. e. end of the
 gland great store
 of ponds of water
 full of fowls
 the hogs & yots
 very hard till
 August September

first maid & shore
 weather by double
 or wind distressed

wayed anton
 from the more shot
 in the morning so you
 for August in
 bay upon faint
 lowland for
 to winter there

(17)
33

// June // 1630 //

from the 24 att non to the 25 att non fair weather the wind S: E: sayled w: 33 bags latitude by observation 25-35 longitude from morshote 06-21 west

from the 25 att non to the 26 att non fair weather S: S: E: sayled w: 03: S: latitude by observation 25-42 longitude from morshote 08-16 west ending variation 24-35

from the 26 att non to the 27 att non fair weather the wind E: N: E: P: N: E: S: E: sayled west 36 bags latitude by observation 25-35 west longitude from the morshote 09-40 west the 26 att 5 of the clock att night we fell with the bay land of faint became a bore in east sayle att night the 27 in the morning we took our soules in that latitude of 25-30 att 6 of the clock we saw the coast all along it to be a broad champion hit land very even hit the land of the lizard so that the middle of the fourmost end of faint became it in longitude 09-40 west from the meridian of the island of morshote we sayled along the coast of observed some 9 miles of the shore very fair weather found variation 20-07 att 3 of the clock in the afternoon we found we had 10 fad of then edge of founding the wind would be further by in founding found: 10: 22: 25: 27: 42: 49: 7: 60: fad some 12 bags of the shore very fair weather but we founding the breadth that had of the S: W: end of faint became to in again for the shore

the 28 att 3 of the clock in the afternoon we saw the land again then stood off till midnight still founding and handling broad shouldering found found upon the lead from 12 or 13 bags of when you stand the furthest bay land N: O: N: S: E: you shall find the water to deepen & have no ground at 100 fad home or 90 or 100 fad for we saw the shoulder to the westward & deepned out water so concluded that no more so the westward of all danger so that keep your self in the latitude of 25-26 if you see all look of all for we expected for to get a counter not the weather being from what that of shifted

finding along the coast found the breadth that had of the S: W: end of faint became

if you find the water to deepen in latitude 25-25 judge your self to the westward of all danger

finding along the coast found the breadth that had of the S: W: end of faint became

if you find the water to deepen in latitude 25-25 judge your self to the westward of all danger

June // 26 30 // July // 26 30 //

The 29 very much wind from tow of the plot in the morning to 12 of the plot at noon we split tow top sayles this morning & our shipp was so fatred at mury at noon & could go on another this forenoon all this day we foundered had no ground att 100 fad & the wind shifted from: w: to: s: s: e: &: &: s: e: so we judg our foulde to the westward of all

from the 29 att noon to the 30 att noon fair weather the wind variable from: s: s: e: to: e: s: e: no storm w: n: w: &: n: w: till 12 of the plot at night & then judgmg of foulde & low of danger no storm n: e: n: n: e: &: n: e: &: att 9 of the morning we saw the land of the in our sight for to seaward the shore we observed att noon & noon in lattitud of 24-40 from 6 leagues of this morning we could not master morisse the information for we did think that in the night we found of the shore he had the foreward to the westward then we did but att tow of the plot in the afternoon we saw him att topmast head to leeward of us the Charles & the Defendive were from 4 miles from the shore att is Champion lit land & it easy to make being what land all alongt so that going for saint lozano to Augustin Bay if you com from the southward be sure of you com for to mak the land in the lattitud of 24-40 or 24-50 about the head of saint lozano we found the winds variable between the: w: &: s: e: this 30 att 6 of the plot at night we lay short till next morning

The first of July att 5 of the plot in the morning we made sail to att topmast head saw the land the wind att: s: e: &: bore at much sayle at noon & could to seek the shore & att 12 of the 12 we saw the land called westminster hall & att 600 east of us & if the wind had overblowd we could not have sought the bay Augustin but must have bene constrained to have be us for Johanna but that afternoon the boate came of all sea att: s: p: s: &: w: &: raved ground with sand among we entered in 10 fad & could had to blowe into this bay in the afternoon and of the shore in the night & in the forenoon

very much wind
tow top sayles split
our shipp at noon

foundered but no
ground in 100 fad

saw land in 24-40
from 6 leagues off

About the head
of saint lozano
the winds variable

saw the land called
westminster hall
the boate came of
att sea & carried
us within the
sainted glands

1630		(18) 35
1630	Entered in August my bay in: 15 16 fad waters	July 1630
1630	Saw the tow land flands on your harbour for going in	The second at 12 of the clock at noon the sea broke & we wayed anchor for the road when the ships especially mid & in going in you must loose at noon the tow land flands at you ran in 6 or 7 fad bounding them of the Harbour for going in & going into the bay your sounding shall be: 6: 7: 8: 9: 10: fad & so deep till you have 20 or 22 fad some time small sand bottom ground & after this you shall have no ground in 30 or 35 fad & then shall you have sounding beyond 27 fad & losing till you come in 15 or 16 fad open ground when you must Anchor for water shot of the shore
1630	The Johnes came into the road had sprung a great boat	The 4 day the Johnes came in to the road having lost our company the 20 of June in the night time the tide sprung & was very great but of ten thousand strokes a glass but it pleased god within 6 or 7 days it was heard & found & stopped being a little about the well in the harbour street
1630	The Dejourid reformation departed	The 13 in the morning the Dejourid & reformation wayed out of this bay for Johanna intending there to stay for the new fleet
1630	The new flight expressed by the black which you are enteligen	The 14 in the morning the new fleet being express by the black which you are enteligen & the new them at top masts had our baytoned sent of our banc and stiff with fresh vittalls for them the ships near the land the William & the lightning all whose arrival we were very glad had they stayed 12 days & landed their sick men a shore at the tents but having no oxen and com near not returned but something better then they would had they had at much fresh vittalls at they would & carried away all their way the full of bread
1630	The new flight wayed for Johanna	The 17 day the new fleet departed from Auguste bay to go for Johanna to recover these sick men to which please god send them a safe arrival
1630		

July 1630

After the new floote Departure Captaine Determined
was for to stay in this bay till the last of
September all which time having very fair
weather Every day the sea brief ran about
11 of the clock in the morning & lasted till
night & then of the shore till the next Day that
time hear no pitch tent & shore & had a Court
of Guard & had traded with the people both at
the river & at the tents to keep stand with
both no few men of their women this first
month being there but after wards found we
offered them no wrong they came to us into
the woods at noon at familiar at the men &
after found 5 weeks being here we had great
flow of Comodities & things brought us Every
other day heard good full which all first we
had for a round board a yoke & afterwards we
had them for long board. 12: 16: 20: for one
board the people both men & women are well
favoured & they will trade for nothing but for
red board our Captaine had half a score of
them a bow & their Captaine name being and
pilon which he had from top to toe sword &
bolt hanging a bout his neck but the next day
found of our men being at his tower he sent
all away for one string of board which showed
how little Esteem of Clothe here is great
flow of board & shoope yote & Gaules mill
& Hammeroll the best we had all this while for
7: 8: 10: or 12: board a yoke the best & shoope
& yote for: 2: 3: a yoke if there had been
shoe that had more a thousand head of cattle
that 3 months they might have been supplied from
the first of July to the 24 of September we had
not one shewe of rayne not one gust of wind

The 24 of September about 12 of the clock at night
the clouds gathered black with much lightning & rayne
next 7: 11: w: the 25 in the morning our long boat
was sent all the round month the 25 & 26 much
rain wind & variable which made us not all the
half we could for to get a wat hogmy the 27th

Captaine and all
Determination
Convincing staying
in this bay

tents with a shore
& a Court of guard

wee we were familiar
with the men but
afterwards traded
with the women
for long board
& such like things

great flow of Comodities
& things brought
us & red board

Captaine and all
Had their Captaine
from top to toe
Who sent all
a way the next day

the price of their
Cattle not one
shewe of rayne
in very near this
month time

Our long boat
sent all the
round month

(19)

September 1630 // October 1630 //

The 25 & 26 much wind & variable which made
us make all the hast we could for to get away
before the sun should had bene shewed but we found
a fiereward to the contrary our Comptroler had
a Comptroler of all these Common words but we
brought into England 3 or 4 of these black boys
by whom the Comptroler may make a boot more
profit there is a low sande point which bears
N. N. E. of the shore at this end in the road upon
which is great store of tammewin and about
the point in the bay is no matter at low water
there is tudd standing in the water about the
which you may load a bot with oysters

The first of October we weighed out of Augustin bay
bound for Day good hope if God permit four weather
the wind of the shore att. E. S. E. we set sail about
5 of the clock in the morning the Court out of the
bay all a longest the shore keeping the same distance
of the shore at the tent to from you where you
had in the road which is fine fater shot of it -
N. W. S. N. 1/2 a point northerly have dry water here
you have the sande stande bearing S. W. of you
then the water should be from 27 fad to 30 fad fathim
Corroll ground sometimes find some sande
of the stande when they bear S. of you then have
you the shallowest water you may beware near the
sande stande in 6 fad of fad no danger the north
end of this bay is dangerous with shoales & breakers
we have had more expences of this bay then we
we have gone to the forward a found Chanell in
that breadth with our barge & have gone through
them thinking to find the place where the Comont
& orange ground & have a black with us for
pilot but our expectation was frustrated for the
blacke man we believe that they were tow or three
dayes journey in the contrary so we durst not
venture this first day att 4 of the clock in the
afternoon we had westminster hall bearing from
us N. E. S. E. So did the two little sande stande
they are very whit & are very good for the
making of the road about 7 of the clock at
night the wind came att. N. N. E.

A Comptroler of
all these common
words gathered
from them by
Captain we all

great store of bread
tammewin & oysters
about the north
of tudd in this
northmost bay

Departed from
Augustin bay
for Day good hope

when the sande
stande are fouly
of you then
have you the
shallowest water

Sande stande
are very whit &
are very good for
the making of this
Augustin bay

October 1630

from fair weather
wind: n: n: e: e
longitud from
Augustin bay
00-45 west

from 1 of the plot at night the first day to
12 at noon the second fair weather the wind n: n: e:
fayted: w: 22: s: 16 leagues & longitud from
bay Augustin 00-45 west

from the second at noon to the third at noon fair
weather wind n: n: e: e: fayted: w: 45: s: 20 leagues
latitud by observation 25-00 & longitud from bay
Augustin 01-49 west

from the 3 at noon to the 4 at noon fair weather the
wind betwene: e: e: s: e: b: s: fayted: s: 33: w: 20 leagues
latitud by observation 25-45 & longitud from
Augustin bay 02-25 west

latitud 27-10
longitud 03-20
variation 17-15
& strong current
set forty west

from the 4 at noon to the 5 at noon fair the wind
s: e: e: s: e: b: s: fayted: s: 33: w: 31 leagues latitud
by observation 27-10 & longitud from Augustin
bay 03-20 west evening variation 17-15 west
we found a strong current to set toward the
fourth westward

from the 5 at noon to the 6 at noon fair weather
the wind betwene the: s: e: e: e: s: e: e: fayted: s: 33: w:
30 leagues latitud by observation 27-10 & longitud
from bay Augustin 04-12 west evening variation
15-13 west

latitud 29-35
longitud 05-15
variation 15-07
& current set
to the westward

from the 6 at noon to the 7 at noon fair weather the
wind betwene the: e: s: e: e: e: n: e: fayted: s: 39: w:
33 leagues here we found a current for to help us
to the fourth westward & e 5 leagues & north latitud
by observation 29-35 & longitud from bay August
05-15 evening variation 15-07 west

from the 7 at noon to the 8 at noon fair weather
the wind: e: e: e: n: e: e: fayted: s: 45: w: 08 leagues
latitud by observation 29-40 & longitud from
bay Augustin 05-35 west evening variation
14-36 west

latitud 30-20
longitud 06-10

from the 8 at noon to the 9 at noon fair weather
the wind betwene the: n: e: e: e: n: e: e: fayted: s: 45: w:
14 leagues latitud by observation 30-20 & longitud
from bay Augustin 06-10

from the 9 at noon to the 10 at noon fair weather
the wind variable betwene the: n: n: e: e: n: n: w:
fayted: w: 33: s: 15 leagues latitud by observation
30-42 & longitud from bay Augustin 06-40 west

A t o b o r 1630		39
<p>latitud 31-30 longitud 08-00 very much wind & raynd thirt durtio weather</p>	<p>from the 10 att non to the 11 att of the clock in the morning the wind n: e: p: n: n: e: fair weather but the 11 in the forenoon very much wind att n: e: n: e: & much raynd with thirt durtio weather dayed: w: 33: s: 35 leagues latitude by Judgment 31-30 & longitud from bay Augustin 08-00 west</p>	
<p>latitud 32-05 longitud 07-30 unfartio weather much thundring & lightning & raynd the sea went very hid rone att w: s: w:</p>	<p>from the 11 att non to the 12 att non very unfartio the wind shifted round a bout all the points of the compass with much thundring & lightning & raynd good observation this day latitude 32-05 & longitud from bay Augustin 07-30 west heard the sea went away hid the wind w: e: w: s: w: e: s: w: till night we stead with our head to the southward with our son saylot fore weather & to the noeward to north thinking it good to keep our point a bout the latitude of 32-00 till if please god to find us a better com</p>	
<p>latitud 33-10 longitud 10-30 variation 10-20</p>	<p>from the 12 att non to the 13 att non fair weather the wind the wind betwix the s: w: e: s: s: e: dayed w: 22: s: 16 leagues latitude by observation 32-20 & longitud from bay Augustin 10-41 west ending variation 12-34 west</p>	
<p>latitud 33-10 longitud 10-30 variation 10-20</p>	<p>from the 13 att non to the 14 att non fair weather the wind s: s: e: e: s: e: b: e: dayed w: 33: s: 20 leagues latitude by observation 32-50 & longitud from bay Augustin 09-34 west</p>	
<p>latitud 34-30 longitud 11-45 variation 08-40</p>	<p>from the 14 att non to the 15 att non fair weather the wind s: s: e: e: s: e: dayed w: 22: s: 20 leagues latitude by observation 33-10 & longitud from bay Augustin 10-30 west morning variation 10-20 west</p>	
<p>latitud 35-40 longitud 10-13 variation 08-45 a violent hoist to the south west ward far beyond our expectation</p>	<p>from the 15 att non to the 16 att non fair weather the wind s: e: e: dayed w: 45: s: 37 leagues latitude by observation 34-30 & longitud from bay Augustin 11-45 west ending variation 08-40 w</p>	
<p>latitud 35-40 longitud 10-13 variation 08-45 a violent hoist to the south west ward far beyond our expectation</p>	<p>from the 16 att non to the 17 att non fair weather the wind e: s: e: e: n: e: dayed w: 22: s: 36 leagues latitude by observation 35-09 & longitud from bay Augustin 13-25 west ending variation 08-30</p>	
<p>latitud 35-40 longitud 10-13 variation 08-45 a violent hoist to the south west ward far beyond our expectation</p>	<p>from the 17 att non to the 18 att non a storm of wind att: e: n: e: we judg it to be the first coming of the ea storme manifested the hovent that sets here s: w: of bay Augustin hoist us to the southward far beyond our expectation latitude by observation 35-40 & longitud from bay Augustin 16-13 west ending variation 08-45 west</p>	

October // 1630 //

Latitude 36-00
Longitude 17-13

from the 10th att noon to the 19th att noon the wind variable
blowing from the: n: e: to the: n: w: & so about till it come
to the south but not so much wind as the day before for the
w: r: s: 20 leagues latitude by observation 36-00 & longitude
from bay Augustin 17-13 west here we found a current
that set us to the: w: s: w: & s: w: b: w: this day in the
morning about 5 of the clock we founde finding our
soulds for 3 leagues of the land but had no ground att 100
fath att 12 of the clock this day the wind being southerly
the Johnas to towards of us we stood in for the shore
w: n: w: & att 4 of the clock in the afternoon we founde
we had 95 fath what run of the tale on the lead was
counted with small soulds but brought up more water by
the sounding we judge our soulds upon the nose of Cap
Dugulis for 20 leagues of & bearing: n: w: b: n: & n: w: from
us this 19th att 12 of the clock att night standing to the to the
westward making a west way we founde had 74 fath find
what sand & no fine of aynd soulds or shells the wind
continuing southerly being: w: we founde a ground att 4
of the clock the 20th in the morning & had 80 fath the lit
ground this morning we saw shells about our ship
which is an argument that we were upon the nose
of Cap Dugulis

Captain and all
spoke with Captain
swanly to show
him the desire
about making
of the land

The 20th att 12 of the clock we had but a bad observation
by judgement this last 24 hours we made s: w: way
then the wind came att: s: e: & we spake with Captain
swanly & our Captain thought it best for to show m: n: w:
& n: w: b: n: to mark the tone & to deal with it of the
weather wear faire otherwise yet this was our Captains
doubt unto him & of the matter we began to conclude that
we were to the westward of the nose of Cap Dugulis
the nose lies of Cap Dugulis because there is no ground or
sounding to be had in the latitude of 36-00 but of this Cap
also hear we made 05-15 of west variation which is a very
good light to show that you have the length of Cap Dugulis
we found this 20th att 6 of the clock att night & had 90 fath
this night we thought to go the land but did not att 12 of
the clock att night we founde a ground & 90 fath very fine
sand at before all this night the wind: s: e: we stood m: n: w:
for to meet the land

made the land
of Cap Dugulis
in latitude 35-00

The 21st att 4 of the clock in the morning we found a ground &
had 90 fath & being that the matter depend we judge our soulds
to be on the: w: side of the nose that lies of the Cap Dugulis
this 21st in the forenoon little wind & about 9 of the clock in
the morning we made the land of Cap Dugulis bearing: n: e:
of us latitude by observation 35-00 morning & evening variat
04-10 this afternoon set of fair weather for which we thank
god for it is not usual in this place here we had a fair gale
of wind att the: s: w: & s: w: b: w: we found att 3 of the clock
in the afternoon & had 94 fath night & 90 fath with our ships
& att 6 of the clock att night being being clear weather

(21)

October 1630 // November 1630 //

The 21st at night being very clear weather we made bay fallhood
so called because many times the one is taken for the other & we
had it n. n. w. of v. found 14 or 15 bags of 7 when bay
fallhood bore: n. n. w. 14 or 15 bags of you shall have 95
fad hom of matter the four or most land of bay dygulis list
in latitude 34-50 fad

The 22nd day in the morning we had bay falsid north of v. found
10 bags of v. found of the ship both our list & had 107 fad
the talow on the head bringing up nothing with it but on the
elote you shall have garnish of head we had four weather
litter wind & variable observation at non 34-50 found 8 bags
of the head of bay falsid bearing: n. of v. being this distance
of we had bay dygulis bearing E of v. & the table land of bay
boursprout bearing: n. n. w. of v. the wind came at fady this
afternoon so we stood in for the bay & at 6 of the elot at night
it bore: n. b. w. of v. 10 bags of Eudmy variation of 00
this night at 9 of the elot we shortened sayle till the next
morning 4 of the elot

The 23rd at 4 of the elot in the morning we set sayle the
wind all this night at 8: S. b. E: being 107 bags of so
we stood in for the bay when the table: n. E: of you
then is the true point of the bay: n. E. b. n. & they bearing
thus of you then you did upon the fadyer list & a towring at
you find the wind you may be bold for to becom whif a bord
the fadyer list you found it very low & you can hardly
see sand it till you be wth in the bay because that it lies
under the low land on the north side of the bay

The 23rd about 3 of the elot in the afternoon we came to anchor in Jaldamy
bay finding no ships there our Captaine went ashore this afternoon &
found Flemish boats we had no powder made our ship but some
very many kind & intended to a very stay all the 24th day
continued till the 25th in the morning

November 1630

The 5th of November tow sayle of Flemings came in to the bay for
to matter bound for Jaldamy having few of English soldiers
women & maids

The 11th we minded from bay boursprout bound for Europe & went
out between ponquid fad the north pier where we had no list then
fad of matter about a fad a lot of the fad you may be bold to come
to near it & fear no danger & this day the tow Flemings awayed out
of the bay after v. when we had bene there for 10 or 11 days the elot
brought v. land bound shoop the next day & spreading the Flemings
coming in they went away their cattell so that we could gett
non afterwarde & if they had not come we had had vittals enough
the reason becom the Flemings v. for to bind some of them fast
in this waye land forth there vittals this day at 4 of the
elot in the afternoon the table land bore: S. E: from v. 12
bags of the hum: S. E: S. b. E: four weather

the name here
about fall it
don't take it
15 bags of 95
fad of matter

bay falsid: n.
16 bags of 107
fad quene of

put in
to any bay
afford of
time using
Jaldamy bay

low Flemings
bound for part
a bay

rounded between
from bay
boursprout

