

This PDF was generated on 28/01/2022 from online resources of
the **Qatar Digital Library**

The online record can be viewed at:

http://www.qdl.qa/en/archive/81055/vdc_100000001524.0x0003c1

It contains extra information, high resolution zoomable views and transcriptions.

Memorandum and Table on the Tribal Divisions of Oman by Major Edward Charles Ross, Political Agent at Muscat

Holding Institution	British Library: India Office Records and Private Papers
Reference	Mss Eur F126/54
Date(s)	May 1872 (CE, Gregorian)
Written in	English in Latin
Extent and Format	1 file (7 folios)
Copyright for document	Open Government Licence



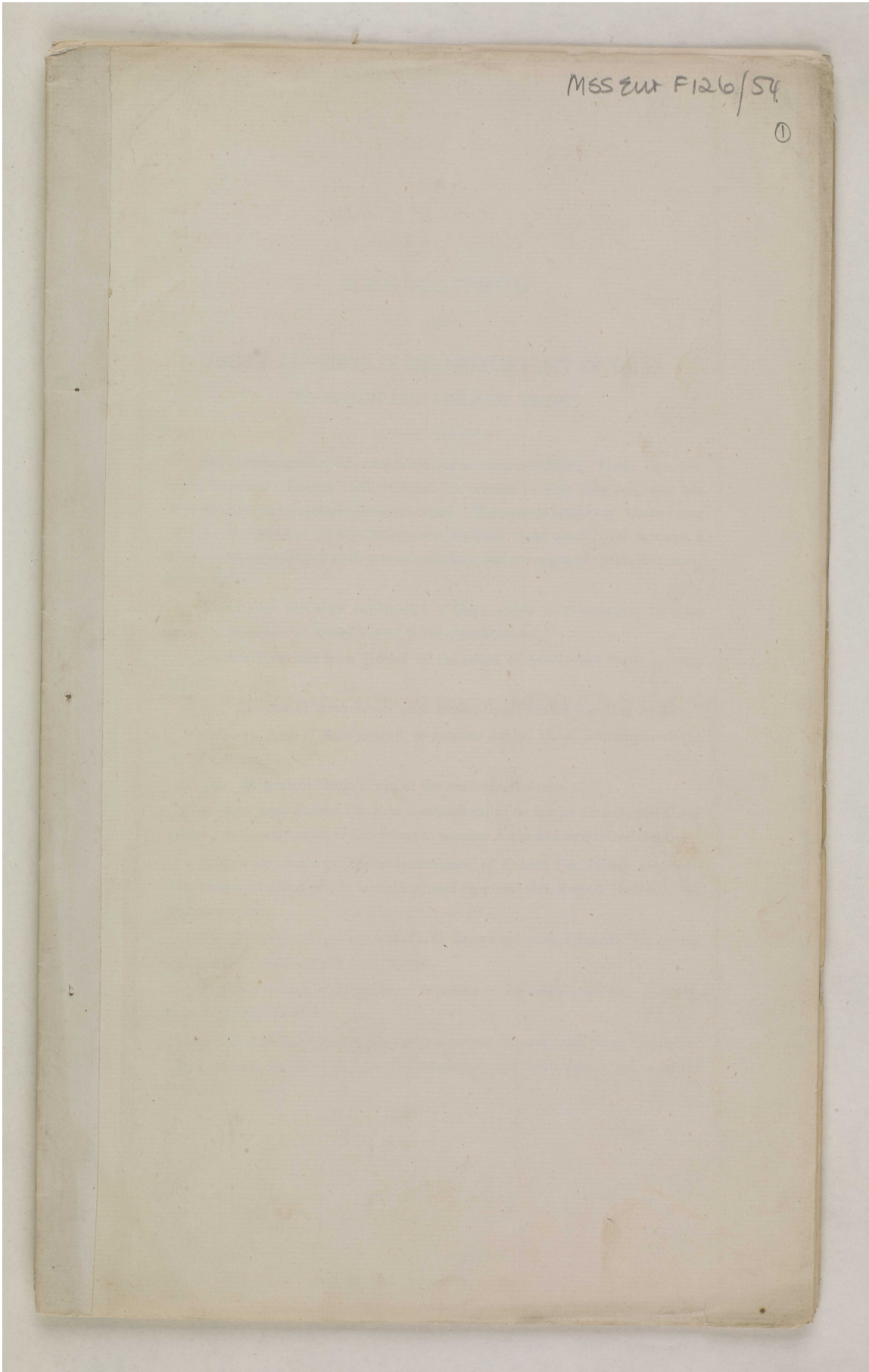
About this record

Memorandum detailing the classification of the Arabian tribes inhabiting Oman including history on how the tribes came to Oman, how they developed and how they became known as the Hinawi and Ghafiri tribes.

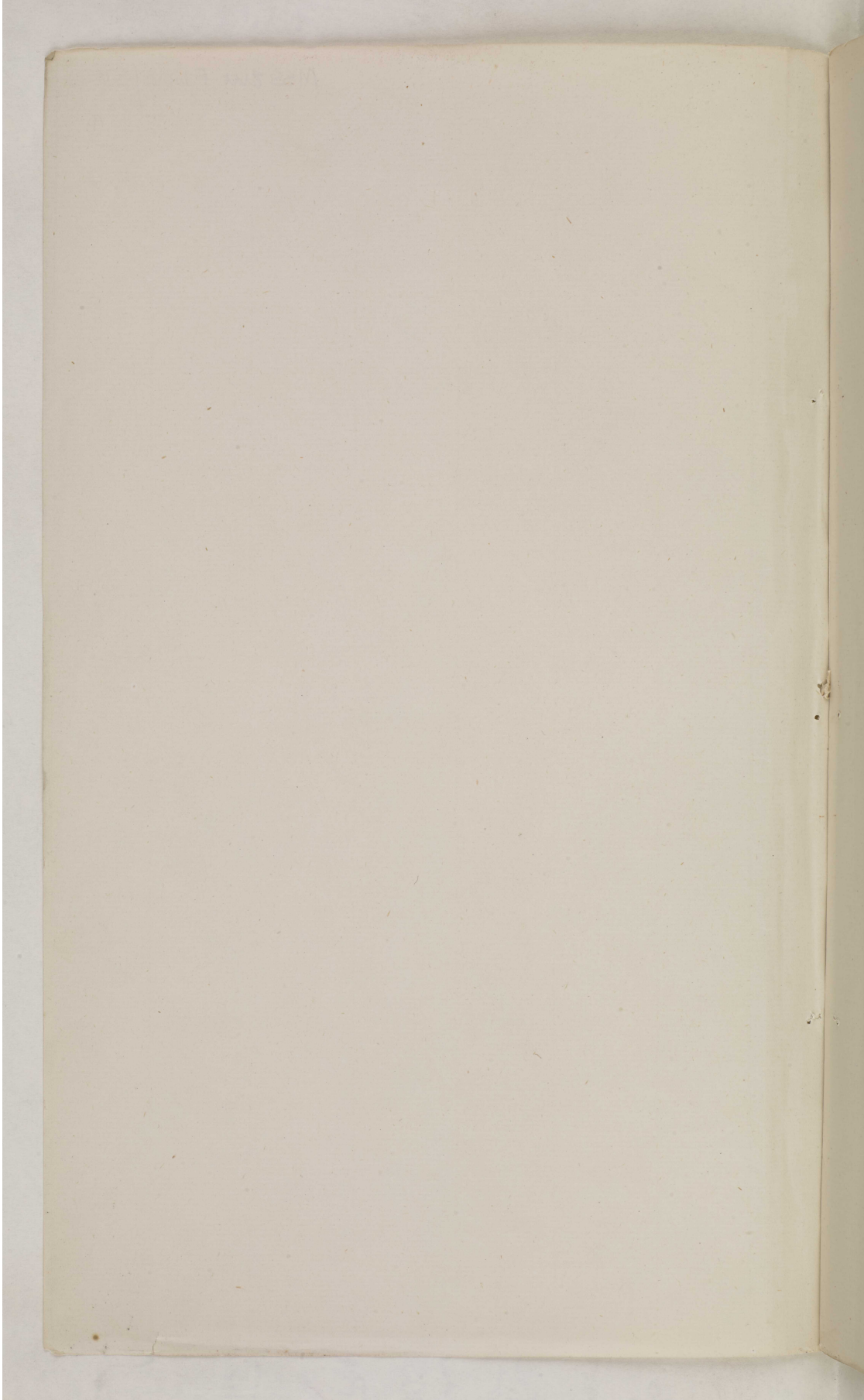
The accompanying table to the memorandum is entitled 'Principal tribes of Omân - Hinâwî Division and Ghâfiri Division' and details the adjective, collective and plural forms of the tribes names; their religious sects; their province; their villages or districts; the number of males in the tribe; and any additional comments, which primarily relate to relations between tribes.

Included in the file is a Map of Oman showing the distribution of the principal tribes which was compiled by Ross. Also included in the file is a genealogical table of 'the descendants of the Imâm Ahmed ÂI-Bû-Sa'îdî', as documented by Ross.

Memorandum and Table on the Tribal Divisions of Oman by Major Edward Charles Ross, Political Agent at Muscat [front] (1/14)



Memorandum and Table on the Tribal Divisions of Oman by Major Edward Charles Ross, Political Agent at Muscat [front-i] (2/14)



Memorandum and Table on the Tribal Divisions of Oman by Major Edward Charles Ross, Political Agent at Muscat [2r] (3/14)

2

MEMORANDUM

ON

TRIBAL DIVISIONS IN THE PRINCIPALITY OF 'OMÂN.

TO ACCOMPANY TABLE OF TRIBES.

The classification of the Arabian tribes or clans inhabiting 'Omân into two great divisions, "Hinâwi" and "Ghâfirî," is peculiar to that kingdom, and has been adopted in comparatively recent times. The modern history of 'Omân being mainly the narrative of the contentions between these great rival factions, a precise understanding of their mutual relations, and the origin of their differences, is desirable.

With a view to a clear explanation of these points it is necessary to refer back to the older and better known tribal classifications.

Arabian historians have divided all the tribes of Arabia into three primary classes.

1st. El 'Arab el 'Arabeh, *i.e.*, pure Arabs, those created speaking Arabic.

2nd. El 'Arab el Mota'arribeh, or genuine Arabs, those who acquired the Arabic language.

3rd. El 'Arab el Mosta'ribeh, or the naturalized Arabs.

Of these three classes the first is considered to be lost or extinct, and there remain the classes known to Europeans as genuine Arabs and naturalized Arabs.

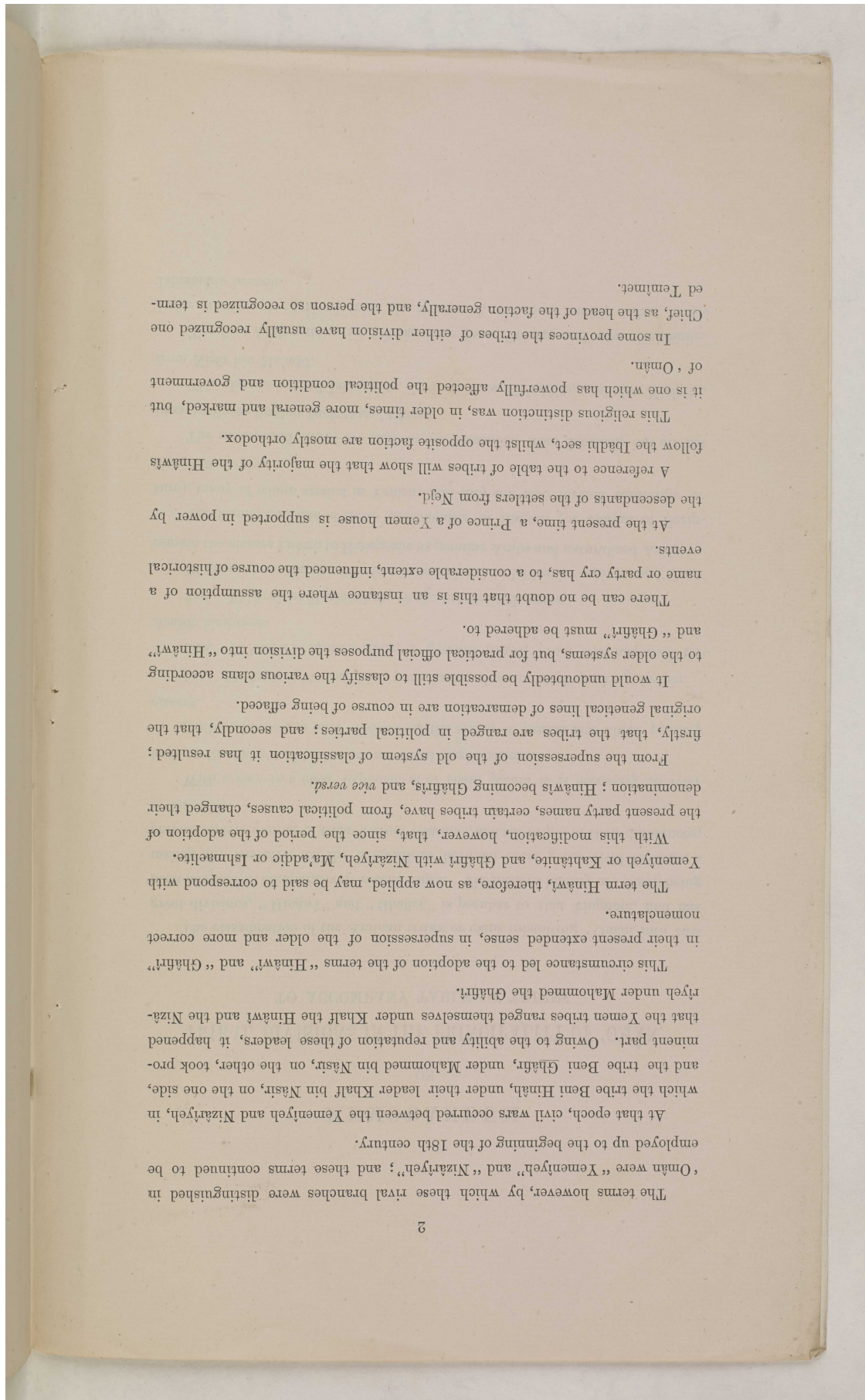
The former consists of those descendants of Kahtan (or Joktan of Scripture), many of whom settled in Yemen, and they are also termed Kahtânite or Yemenite Arabs.

The naturalized Arabs are said to be descended from Ishmael, but do not trace pedigree further back than 'Adnan.

This class is termed Ishmaelite, 'Adnanite or Ma'addite, and also Nizârîte, from Nizâr bin Ma'add.

The first Arab settlers in 'Omân came from Yemen, and were Kahtânite. Later immigrants arrived from the westward, and were mostly tribes of the Ishmaelite branch.

Memorandum and Table on the Tribal Divisions of Oman by Major Edward Charles Ross, Political Agent at Muscat [2v] (4/14)



The terms however, by which these rival branches were distinguished in Oman were "Yemeniyeh" and "Nizariyeh"; and these terms continued to be employed up to the beginning of the 18th century.

At that epoch, civil wars occurred between the Yemeniyeh and Nizariyeh, in which the tribe Beni Hinah, under their leader Khalf bin Nasir, on the one side, and the tribe Beni Ghafir, under Mahommed bin Nasir, on the other, took prominent part. Owing to the ability and reputation of these leaders, it happened that the Yemen tribes ranged themselves under Khalf the Hinawi and the Nizariyeh under Mahommed the Ghafir.

This circumstance led to the adoption of the terms "Hinawi" and "Ghafiri" in their present extended sense, in supersession of the older and more correct nomenclature.

The term Hinawi, therefore, as now applied, may be said to correspond with Yemeniyeh or Kahlanite, and Ghafiri with Nizariyeh, Maadid or Ishmaelite.

With this modification, however, that, since the period of the adoption of the present party names, certain tribes have, from political causes, changed their denomination; Hinawis becoming Ghafir, and *vice versa*.

From the supersession of the old system of classification it has resulted; firstly, that the tribes are ranged in political parties; and secondly, that the original genealogical lines of demarcation are in course of being effaced.

It would undoubtedly be possible still to classify the various clans according to the older systems, but for practical official purposes the division into "Hinawi" and "Ghafiri" must be adhered to.

There can be no doubt that this is an instance where the assumption of a name or party cry has, to a considerable extent, influenced the course of historical events.

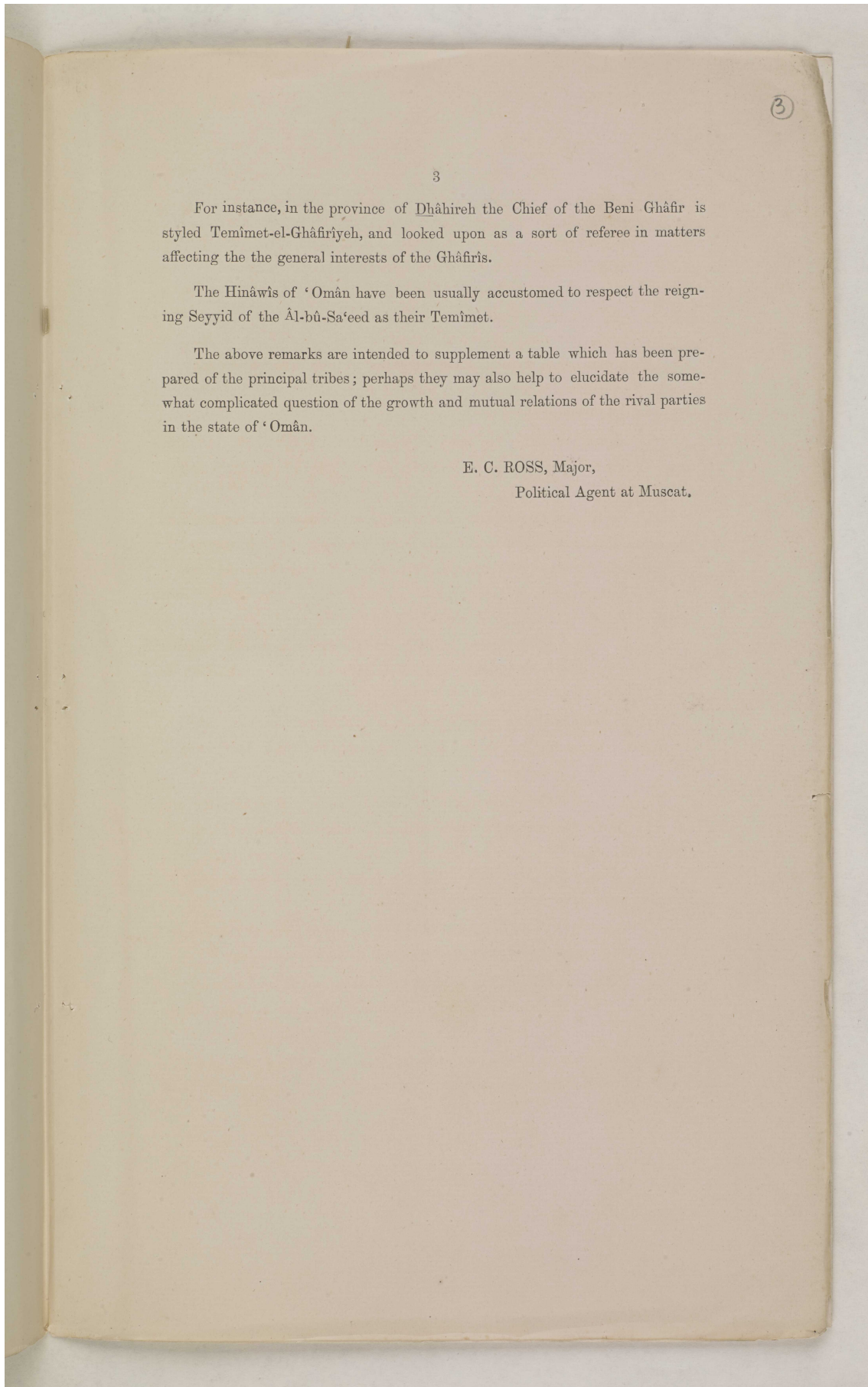
At the present time, a Prince of a Yemen house is supported in power by the descendants of the settlers from Negd.

A reference to the table of tribes will show that the majority of the Hinawis follow the Ibadi sect, whilst the opposite faction are mostly orthodox.

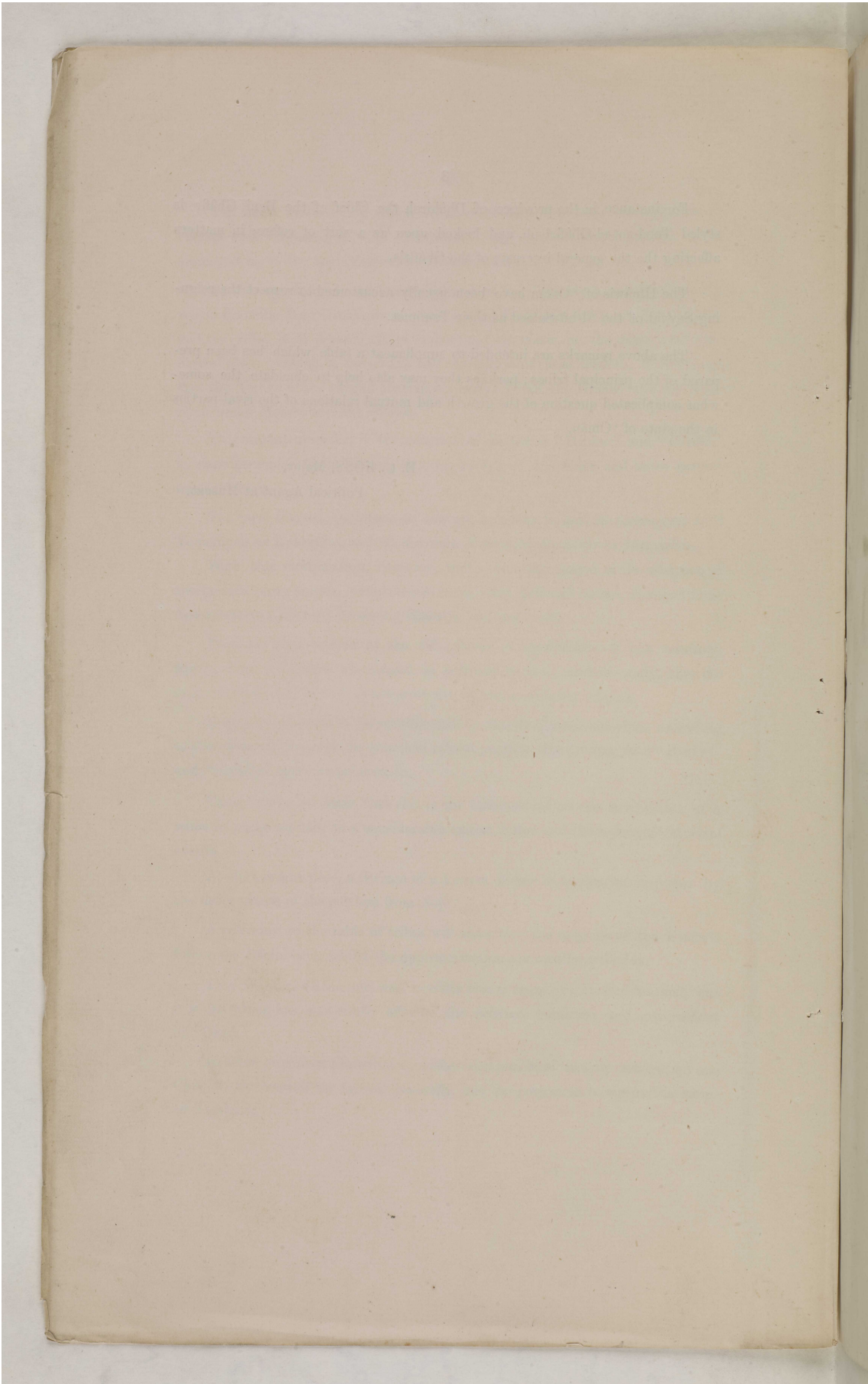
This religious distinction was, in older times, more general and marked, but it is one which has powerfully affected the political condition and government of Oman.

In some provinces the tribes of either division have usually recognized one Chief, as the head of the faction generally, and the person so recognized is termed Teminet.

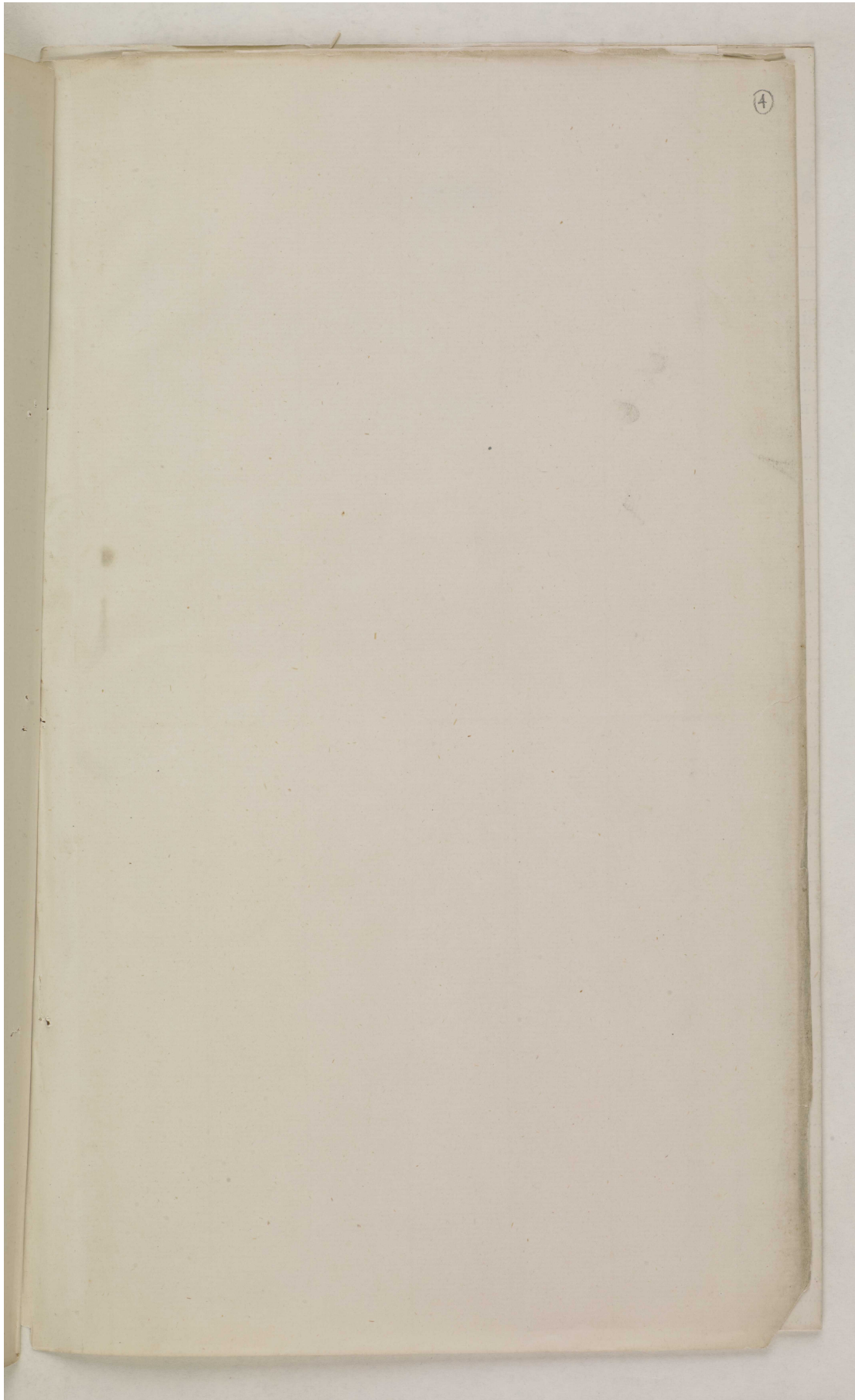
Memorandum and Table on the Tribal Divisions of Oman by Major Edward Charles Ross, Political Agent at Muscat [3r] (5/14)



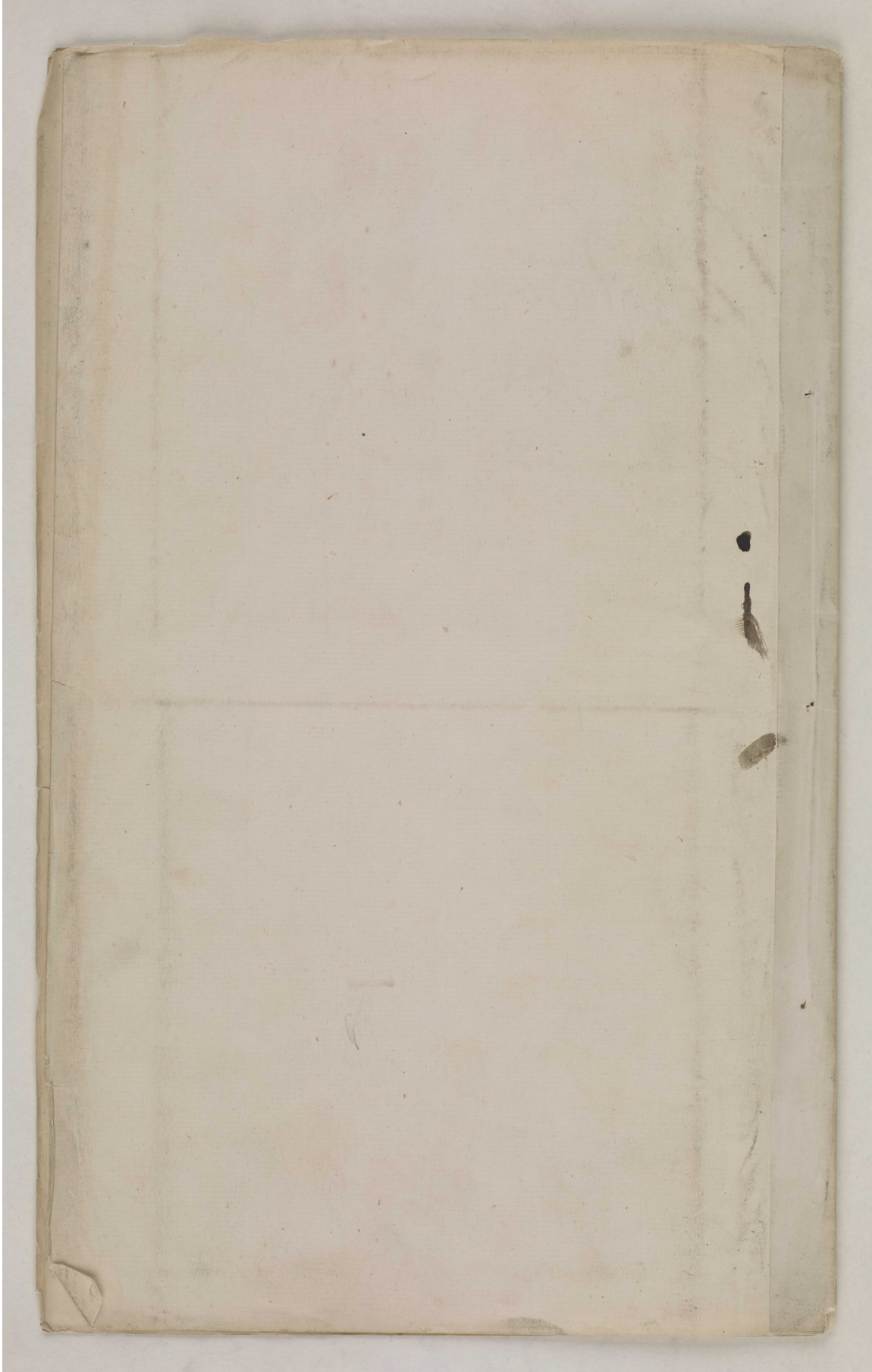
Memorandum and Table on the Tribal Divisions of Oman by Major Edward Charles
Ross, Political Agent at Muscat [3v] (6/14)



Memorandum and Table on the Tribal Divisions of Oman by Major Edward Charles Ross, Political Agent at Muscat [back-i] (7/14)



**Memorandum and Table on the Tribal Divisions of Oman by Major Edward Charles
Ross, Political Agent at Muscat [back] (8/14)**



Memorandum and Table on the Tribal Divisions of Oman by Major Edward Charles Ross, Political Agent at Muscat [5r] (9/14)

PRINCIPAL TRIBES OF 'OMÂN.

GHĀFIRĪ DIVISION.

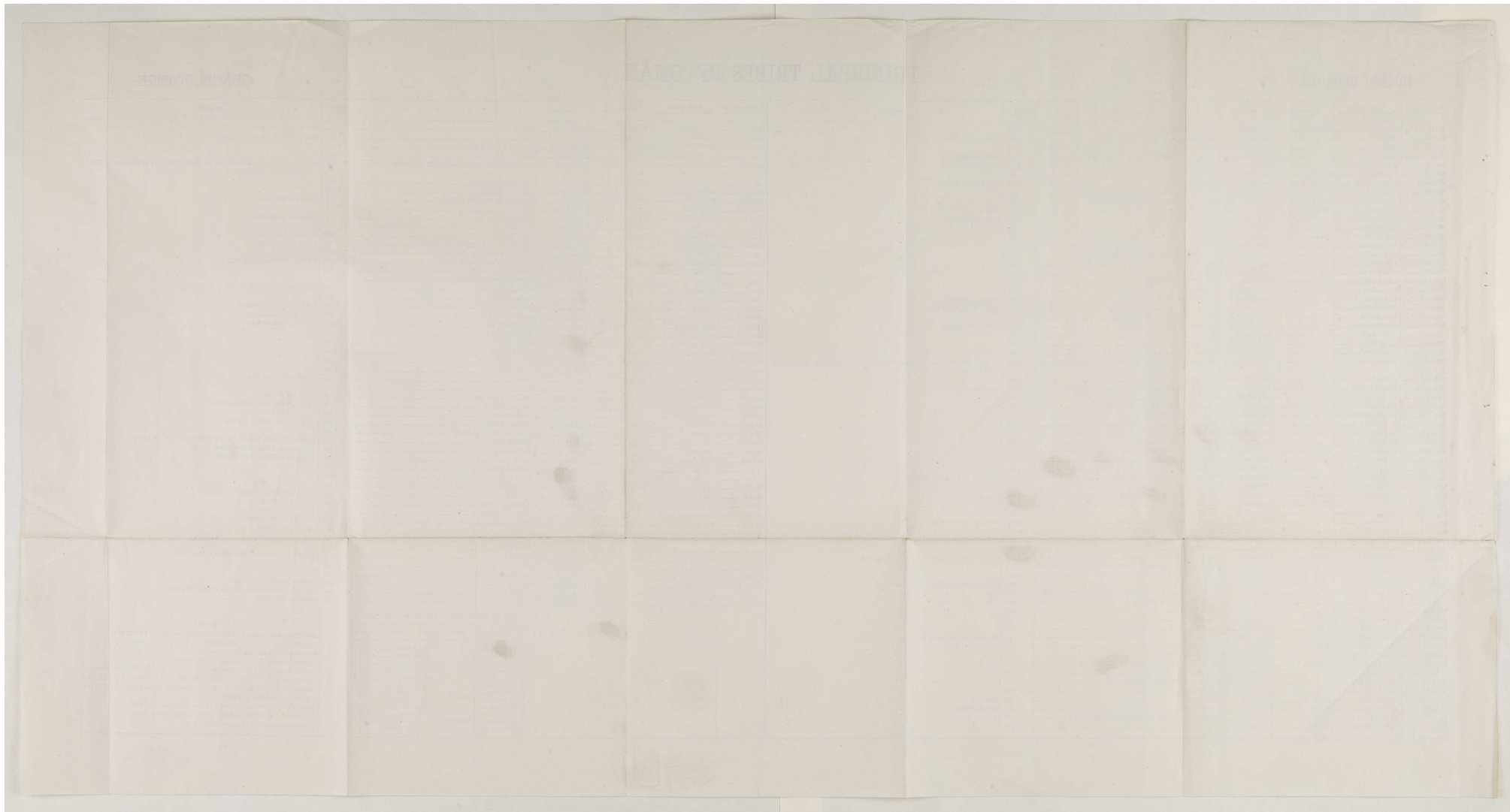
HINAWĪ DIVISION.

HINAWĪ DIVISION.				PRINCIPAL TRIBES OF 'OMÂN.				GHĀFIRĪ DIVISION.					
NAME OF TRIBE OR SUB-TRIBE.	NAME OF TRIBE OR COLLECTIVE FAMILY NAME.	RELIGIOUS SECT.	PROVINCE.	VILLAGES OR DISTRICTS.	NUMBER OF HEADS.	REMARKS.	NAME OF TRIBE OR SUB-TRIBE.	NAME OF TRIBE OR COLLECTIVE FAMILY NAME.	RELIGIOUS SECT.	PROVINCE.	VILLAGES OR DISTRICTS.	NUMBER OF HEADS.	REMARKS.
ADŪWĪ	BENI-ADĪ	IBĀDHĪ	EL-HAJAR	BOSTAK, BOWEEN.	200		ALĀWĪ	BENI-MU'ALLĪ	WĀDHĀHĪ	SHĀRKĪYEH	JĀ'ĀLAN, SŪR	1,500	At feud with Beni-Ab-Ham.
'ĀLĀWĪ	BENI-'ĀLĪ	"	EL-HAJAR	BOSTAK.	1,000	At feud with Beni-Ghāfir.	IBĀDHĪ	EL-BIDĀ	SUNNĪ	EL-HAJAR	DŪT	100	Kāhāsh. At feud with the Beni-Ghāfir.
'ĀLĀWĪ	BENI-'ĀLĪ	"	BĀTINEH	WĀDHĀHĪN	50		IBĀDHĪ	ED-DEB	"	OMĀN	BEDOUIN or NOMADIC	1,000	
'ĀMĒRĪ	EL-'ĀMĒRĪ	"	OMĀN	EL-FALĀJ, EL-KARYĀTĪN, HAMEYDHĪN, EL-KĀHĀH	2,000	At feud with the Jaskah.	Do	Do	SUNNĪ	EL-HAJAR	TENĀM	2,000	
'ĀRĀBĪ	BENI-'ĀRĀBĪ	"	OMĀN	EL-'ĀRĀBĪ	1,000	At feud with the Sibā in.	GHĀFIRĪ	BENI-GHĀFIR	SUNNĪ	EL-HAJAR	EL-GHĀDĪR, EL-TENĒSĪN, ED-DĪNĀZ, EL-'ĀSHĪH	900	At feud with the Beni-'Āli, the Yarkāh, and Beni-Kāhāsh. This tribe gave the name to the Ghāfir party, previously the Nāshqah.
BĀRĪHĪ	BENI-BĀRĪHĪ	SUNNĪ	BĀTINEH	EL-MĀZĀRA	300		Do	Do	IBĀDHĪ	EL-HAJAR	WĀDH-BENI GHĀFIR	500	
BĀTTĀSHĪ	BENI-BĀTTĀSHĪ	IBĀDHĪ	OMĀN	EL-MĀZĀRA	2,000	At feud with the Sibā in.	HĀRĀBĪ	BENI-HĀRĀBĪ	"	EL-HAJAR	NĀKHĪ	3,000	
BĒDŪĪ	BENI-BĒDŪĪ	SUNNĪ	EL-HAJAR	WĀDH-BĀTTĀ	250		EL-HĀJĀR	EL-BIDĀ	SUNNĪ	EL-HAJAR	EL-TĒTĒHĀL, EL-SĀMĒRĪYEH	800	At feud with the El-Ġajr.
BĒRĒKĪ	YĀL-BĒRĒKĪ	"	BĀTINEH	SHĪH, RĀSHĪYĒT-YĀL-BĒRĒKĪ, ED-DĪYĪ	200		EL-HĀJĀR	EL-HĀJĀR	SUNNĪ	EL-HAJAR	BĒDŪSĪN	1,000	
BĀHĀNĪ	BENI-BĀHĀNĪ	SUNNĪ	EL-HAJAR	WĀDH-EL-KĀWĪ	200	Idemulhe.	EL-HĀJĀR	EL-HĀJĀR	SUNNĪ	EL-HAJAR	EL-BOMBA	50	At feud with the Beni-Hād.
BĀHĀBĪ	BENI-BĀHĀBĪ	"	BĀTINEH	EL-'ĒIN, EL-MŌTĒRĪHĪ	1,000	At feud with the Nā'in.	IBĀDHĪ	EL-IBĀDHĪN	"	EL-HAJAR	EL-OMĀM	1,000	
FĒZĀBĪ	EL-FĒZĀBĪ	"	BĀTINEH	MAKHĒYĪL	70		Do	Do	SUNNĪ	EL-HAJAR	EL-OMĀM	200	At feud with the Beni-'Āli.
GHĀDĪ	EL-GHĀDĪYĪT	IBĀDHĪ	BĀTINEH	BŪ-KĀLĪ	50		IBĀDHĪ	BENI-'ĀBĒR	"	EL-HAJAR	KĀLĀT, YĒYŪ, DHĒBĀS, and HĪLLĒS	5,000	At feud with Beni-Bāsh.
GHĀDĪ	EL-GHĀDĪYĪT	"	BĀTINEH	BŪ-KĀLĪ	50		Do	Do	"	EL-HAJAR	SEYĒHĪ, EL-FĒYĪHĪ, ET-TŌW	5,000	Do do.
HĀSĪ	EL-HĀSĪ	"	SHĀRKĪYEH	EL-MAJDEYĪL, BR-ROWDHĀH, WĀDH-ANDĀM	5,000		JĒNĒYĪ	EL-FĒRĒBĒHĪ	SUNNĪ	SHĀRKĪYEH	BĒDŪSĪN of desert from JĀZER wear, SŪR	5,000	Kāhāsh. At feud with the Āl-Wāshāh.
HĀMĀDĪ	YĀL-HĀMĀDĪ	"	BĀTINEH	EL-GHĀRĪFĪHĪ	800		Do	Do	"	OMĀN	BĒDŪSĪN	800	
HĒJĒMĪ	BENI-HĒJĒMĪ	SUNNĪ	SHĀRKĪYEH	SŪD, JĒNĀH	500		Do	Do	"	BĀTINEH	EL-KHĀDHĒRĪHĪ	100	
HĀDĪ	EL-HĀDĪN	IBĀDHĪ	SHĀRKĪYEH	WĀDH-ANDĀM	500		KĀWĪ	BENI-KĀWĪ	"	EL-FŌW	EL-MAJDEHĀHĪ	200	At feud with the Beni-Mer'.
HĀYTHĪ	EL-HĀYTHĪ	"	SHĀRKĪYEH	EL-KĀBĪL, ED-DĒRĒHĪ, IBĒRĀ	2,000	At feud with the Masā'irah.	KUNĒDĪ	EL-KUNĒDĪ	IBĀDHĪ	EL-HAJAR	WĀDH-EL-KŌWĪ	300	
HĀSĀMĪ	BENI-HĀSĀMĪ	"	SHĀRKĪYEH	JĀ'ĀLAN	1,000	At feud with the Beni-Āl.	KĀWĪ	BENI-KĀWĪ	SUNNĪ	OMĀN	NEWĀ	1,000	At feud with the people of Beni-'.
HĀSĀNĪ	BENI-HĀSĀNĪ	"	EL-HAJAR	RŪĪ, WĀDH-BŪSHĒR, EL-HĀBŪBĀH	1,000		KHĒBĀNĪ	BENI-KHĒBĀNĪ	SUNNĪ	EL-HAJAR	EL-ĀTĀLĀ	300	" = the Beni-Mer'.
HĒDDĀBĪ	EL-HĒDDĀBĒHĪ	"	OMĀN	EL-KHŌWĪL, FĀNĀH, BĒDĒD	1,000	At feud with the Sibā in.	KHĒBĀNĪ	BENI-KHĒBĀNĪ	SUNNĪ	EL-HAJAR	EL-MAKĀNNĪYĀT	1,000	" = the Beni-Ghāfir.
Do	Do	"	BĀTINEH	BĒDĒS	100		KHĒRĒSĪ	BENI-KHĒRĒSĪ	IBĀDHĪ	EL-HAJAR	BŌSTĀK, NĀKHĪ	300	
HĒJĒMĪ	EL-HĒJĒMĪ	"	SHĀRKĪYEH	EL-BĒYĒHĪ	150		KHĀZĒYĒHĪ	BENI-KHĀZĒYĒHĪ	IBĀDHĪ	EL-HAJAR	NĀKHĪ	200	
HĒYTHĪ	EL-HĒYTHĪ	"	BĀTINEH	ED-DĪYĪ	500		KHĒYĒHĪ	BENI-KHĒYĒHĪ	SUNNĪ	EL-HAJAR	WĀDH-EL-ĒKĒBĪ	1,000	
HĒNĀ'Ī	BENI-HĒNĀ'Ī	"	OMĀN	BĒDĒSĒYĒT, WĀDH-'ĀLĀ, EL-KHŌWĪL, FĀNĀH, BĒDĒD	9,000	The term Hinawī, now applied to the whole Division, derived from this family. They have a feud with the 'Hā'in.	MAHĀRĀHĪ	BENI-MAHĀRĀHĪ	IBĀDHĪ	EL-HAJAR	WĀDH-SĒMĀHĪ	1,000	
HĒNĀSĪ	EL-HĒNĀSĪ	"	BĀTINEH	EL-GHĀDĪ	400		MAKĀDĪLĪ	EL-MAKĀDĪLĪ	SUNNĪ	EL-HAJAR	NEAR SOHĀR	1,000	At feud with the Āl-Bā-Sū'Ī.
HŌWĀNĪ	EL-HŌWĀNĒHĪ	"	BĀTINEH	WĀDH-EL-HŌWĀNĒHĪ, EL-GHĒYẒĪN, EL-KHĀBŪHĪ	400	At feud with the Beni-'Onar.	MAKHĒYĒRĒHĪ	EL-MAKHĒYĒRĒHĪ	IBĀDHĪ	OMĀN	ĀDĀM	200	
JĀBĒHĀMĪ	EL-JĀBĒHĀMĪ	"	SHĀRKĪYEH	SĒMĒD	2,000		MĒJĒRĒHĪ	BENI-MĒJĒRĒHĪ	"	OMĀN	SĒMĀHĪ	1,000	At feud with the Harā.
JĒRĒDĪ	YĀL-JĒRĒDĪ	"	BĀTINEH	ĀBŪ-MAHĒR, MĀRĀGHĀH, EL-JĒRĒD	800		MĒRĒDĪ	BENI-MĒRĒDĪ	"	EL-HAJAR	BŌSTĀK, SĒMĀLĪ	100	" = the Beni-Kā'.
KĀBĒYĪ	YĀL-KĀBĒYĪ	"	BĀTINEH	EL-LĀFĒYĒHĪ, BĒYĀN	300		NĀDĀHĪ	EL-NĀDĀHĪN	"	EL-HAJAR	WĀDH-EL-'ĀKĒ	2,000	" = the Beni-Kā'.
KĀRĒYĒHĪ	BENI-KĀRĒYĒHĪ	SUNNĪ	BĀTINEH	KHŌB-EL-MĒLĪ	60		NĀSĀHĪ	EL-NĀSĀHĪ	SUNNĪ	EL-HAJAR	EL-BĒYĒHĪ, EL-KĒBĪ	1,000	" = the Beni-Yā. Kāhāsh.
KĀTĒYĪ	EL-KĀTĒYĪ	"	BĀTINEH	EL-BĒRĒYĒ	100		Do	Do	"	EL-FŌW	BĒRĒYĒ, ASĀRĀH, HĀFĒT	3,000	
KĀLĀDĪ	BENI-KĀLĀDĪ	"	BĀTINEH	EMĒ, ET-TĒYĒFĒHĪ	150		NEBHĀNĪ	BENI-NEBHĀNĪ	IBĀDHĪ	EL-HAJAR	BŪSHĒR, SĒMĀLĪ	100	Kāhāsh. This family furnished Princes of 'Oman from 19th to 20th century.
KĀMĀSĪ	YĀL-KĀMĀSĪYĒHĪ	IBĀDHĪ	BĀTINEH	EL-KĒMĀSĪYĒHĪ, SĒMĀHĪ	1,000		SĒJĀHĪ	EL-SĒJĀHĪ	"	OMĀN	ZĪKĪ or ZĪKĪ	1,250	At feud with the Yemā and Beni-Bāsh.
KĀPĒYĪ	EL-KĀPĒYĪ	SUNNĪ	BĀTINEH	WĀDHĀM	300		Do	Do	"	EL-HAJAR	WĀDH-EL-BŌWĀSĒHĪ	1,000	At feud with the Hōwāsh and Makhlā.
MĀKĒHĪ	EL-MĀVĀLĒHĪ	"	SHĀRKĪYEH	RĀS, EL-HĀDŌ	800		Do	Do	IBĀDHĪ	EL-HAJAR	EL-GHĒYẒĪN, GHĀDĪFĀN, EL-ĀSĀR	1,000	
MĀNDĒRĪ	EL-MĀNĀDĒRĒHĪ	IBĀDHĪ	EL-HAJAR	ES-SĒLYĒP	50	Idemulhe. At feud with the Bā'wāsh.	Do	Do	"	BĀTINEH	EL-GHĒYẒĪN, GHĀDĪFĀN, EL-ĀSĀR	200	
MĀN'ĀWĀHĪ	EL-MĀN'ĀWĀHĪ	"	BĀTINEH	EL-MĀDĒHĪ	300		RĀSĪ	EL-RĀSĪYĒHĪ	SUNNĪ	EL-HAJAR	EL-PĀZĒRĪ	1,000	At feud with the Beni-Ā-Ham.
MĀRĒKĪ	EL-MĀRĀZĒKĪ	"	BĀTINEH	SŪB-MĒYĀN, KHŌB-EL-BĀMĀM	600	Idemulhe.	RĒBĒHĪ	EL-RĒBĒHĪN	"	SHĀRKĪYEH	EL-WĀYĒ	1,000	
MĀSHĒDĒRĒHĪ	EL-MĀSHĒDĒRĒHĪ	IBĀDHĪ	BĀTINEH	EL-MĀN'ĀWĀHĪ	1,500		RĒYĀMĪ	BENI-RĒYĀMĪ	"	OMĀN	JĒRĒL, EL-'ĀKĒBĒRĀHĪ	2,000	" = Hāsh.
MĀSHĒRĒYĒHĪ	EL-MĀSHĒRĒYĒHĪ	"	SHĀRKĪYEH	EL-RĀSĒNĀH	300		SAĀDĪ	BENI-SĀADĀHĪ	SUNNĪ	EL-HAJAR	DŪT	100	" = Beni-Bāsh.
MĀWĀLĪ	EL-MĀWĀLĪ	"	BĀTINEH	EL-KĒMĀSĪYĒHĪ, WĀDH-EL-MĀWĀLĪ	4,000	At feud with people of Nāh.	SHĀKĒTĪ	BENI-SĀADĀHĪ	IBĀDHĪ	OMĀN	SĒPĀN, EL-ĀSĀRĒYĒHĪ	100	" = Beni-Ghāfir.
NŌWĒLĪ	EL-NŌWĀLĪ	"	BĀTINEH	SHĀBĒLĪ, WĀDHĀM, MAJZĒN-SŌWĀFĪ	400		Do	Do	"	EL-HAJAR	EL-GHĀDĪ, KHĀDĀFĪ	700	" = Beni-'.
RĀSHĒYĒHĪ	YĀL-BŪ-RĀSHĒYĒHĪ	"	BĀTINEH	EL-KHĀBŪHĪ	1,500		Do	Do	"	EL-HAJAR	EL-GHĀDĪ, KHĀDĀFĪ	400	
RĒDĒYĒHĪ	EL-RĒDĒYĒHĪ	SUNNĪ	BĀTINEH	EL-ĀBĀSĒHĪ	50		SHĀRĒKĪ	EL-SĒRĒKĪNĪ	SUNNĪ	EL-HAJAR	WĀDH-BĀM	200	At feud with the Hāsh, Beni 'Arthāh, and Beni Bāsh.
RŪYĒHĪ	BENI-RŪYĒHĪ	IBĀDHĪ	OMĀN	WĀDH-JĒNĒKŪHĒHĪ	2,500	Idemulhe. At feud with the Beni-'Āl and Beni-Ġajr.	SHĒRĪ	EL-SĒSHĒRĪNĪ	IBĀDHĪ	EL-HAJAR	SĀPĀR	2,500	
SĀMĪ	YĀL-SĀAD	"	BĀTINEH	BŪ-'ĀLĪ, EL-MĀLLĀBĒHĪ, EL-KĀT, THĀMĀD, BĀY-BĀ, BR-RĀKĀS, EL-KHĀBĒRĒHĪ	10,000		SĒSĀNĪ	BENI-SĒSĀNĪ	SUNNĪ	SHĀRKĪYEH	SŪR	500	
SĀMĪ	ĀL-BŪ-SĀYD	"	SHĀRKĪYEH	SĒMĒD	500	Family of the reigning Sūyādh. Derive from the Ād.	SŪDHĪ	BENI-SŪDHĪ	"	EL-HAJAR	ĀBYĀDHĪ	1,000	Kāhāsh. At feud with Beni-Ghāfir.
Do	Do	"	OMĀN	BĀY-BĒYĒ, FĀLĀM, ĀBŪ-SĀKĒBĒHĪ, ĀBŪ-MĀNĪ, ĀMĀM, NĒWĀ	2,500	Do do do.	YĀKŪHĪ	EL-YĀKŪHĪ	"	EL-HAJAR	BŌSTĀK, NĀKHĪ	100	This family furnished Princes of 'Oman in 17th and 18th centuries.
Do	Do	"	BĀTINEH	KĀSHĪYĒT-ĀL-BŪ-SĀYD	300	Do do do.	YĀKŪRĪ	EL-YĀKŪRĪ	IBĀDHĪ	EL-HAJAR	FĀDĀ	100	At feud with Beni-Ghāfir.
SĀLĒBĪ	ES-SĀWĀLĒHĪ	"	BĀTINEH	ES-SŪVĒYĒ	400		ZĒDĪ	BENI-ZĒDĪ	IBĀDHĪ & SUNNĪ	EL-HAJAR			
SĒLĀMĪ	ĀL-'ĀBŪ-ES-SĒLĀMĪ	SUNNĪ	BĀTINEH	ED-DŪYĒ	50								
SĒRĒHĪ	ES-SĒRĒHĪNĪ	IBĀDHĪ	EL-HAJAR	KĀKHĪ	100								
SŌWĀFĪ	ES-SŌWĀFĒHĪ	"	IBĀDHĒHĪ	ES-SĒLYĒ	60	Idemulhe. At feud with the Masā'irah.							
SĒHĒSĪ	ES-SĒHĒSŪSĪ	SUNNĪ	BĀTINEH	KHŌB-EL-BĀMĀM	300								
SĒHĀDĪ	ES-SĒHĀDĪNĪ	"	BĀTINEH	KHŌB-EL-BĀMĀM	70								
WĀDHĪ	EL-WĀDHĒHĪ	IBĀDHĪ	BĀTINEH	EL-LĀSĒR, SĒMĒYĒRĒHĪ, SĒMŌW, WĀPĀKĀYĀM	5,000	Debatin.							
Do	Do	"	BĀTINEH	MAJZ-ĀL-WĀDHĒHĪ	70								
WĀDHĪ	BENI-WĀDHĪ	"	EL-HAJAR	RŪĪ, WĀDH-BŪSHĒR, EL-HĀBŪBĀHĪ	1,500								
YĒRĒHĪ	EL-YĒRĒHĪ	"	SHĀRKĪYEH	WĀDH-ANDĀM	300								
YĀSĀMĪ	EL-YĀSĀMĒYĒHĪ	SUNNĪ	BĀTINEH	EL-HAJAR	100	Idemulhe.							
YĒMĒSĪ	EL-YĒMĒSĪ	"	IBĀDHĪ	OMĀN	1,250	At feud with Nāh.							
YĀSĀHĪ	EL-ZĒ'ĀB	SUNNĪ	BĀTINEH	KĀSHĪYĒT-ĒZ-ZĒ'ĀB, BR-RŪYĒHĪ, EL-KHĀSĒHĀHĪ	400								
ZĒKĀWĪ	EL-ZĒKĀWĒYĒHĪ	IBĀDHĪ	SHĀRKĪYEH	SĒMĒD	300								

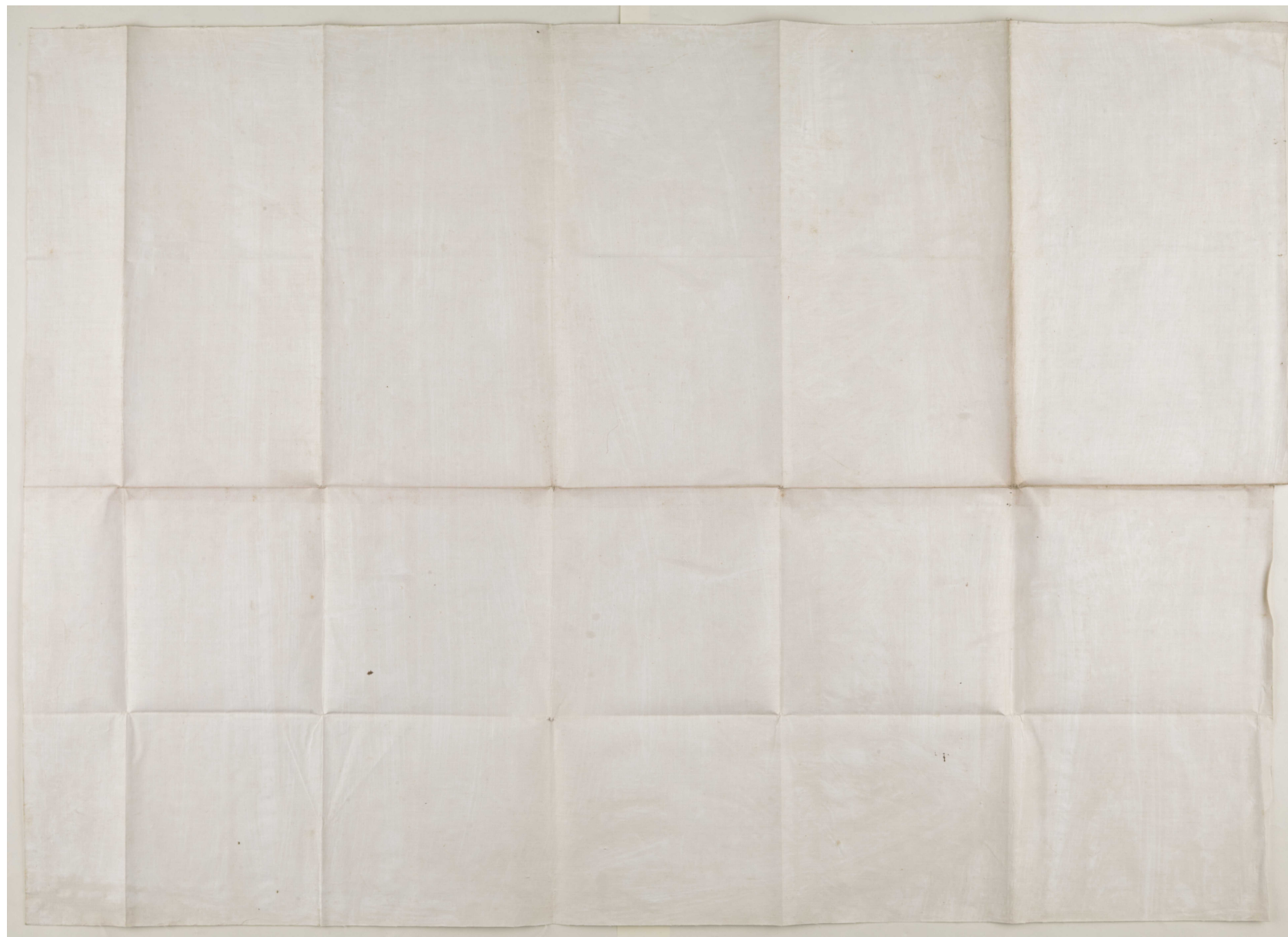
KEY TO PRONUNCIATION AND TRANSLITERATION.

Form	Form	Form	Form	Form	Form
A a in baggar	TH th in both	5			
E e in bed	TH th in the	3			
I i in hill	KH kh in both	6			
O o in obey	GH gh in Sagen (German)	2			
U u in bull	DH dh in both	1			
Ā ā in father	Y y in both	7			
Ī ī in both	S s in both	8			

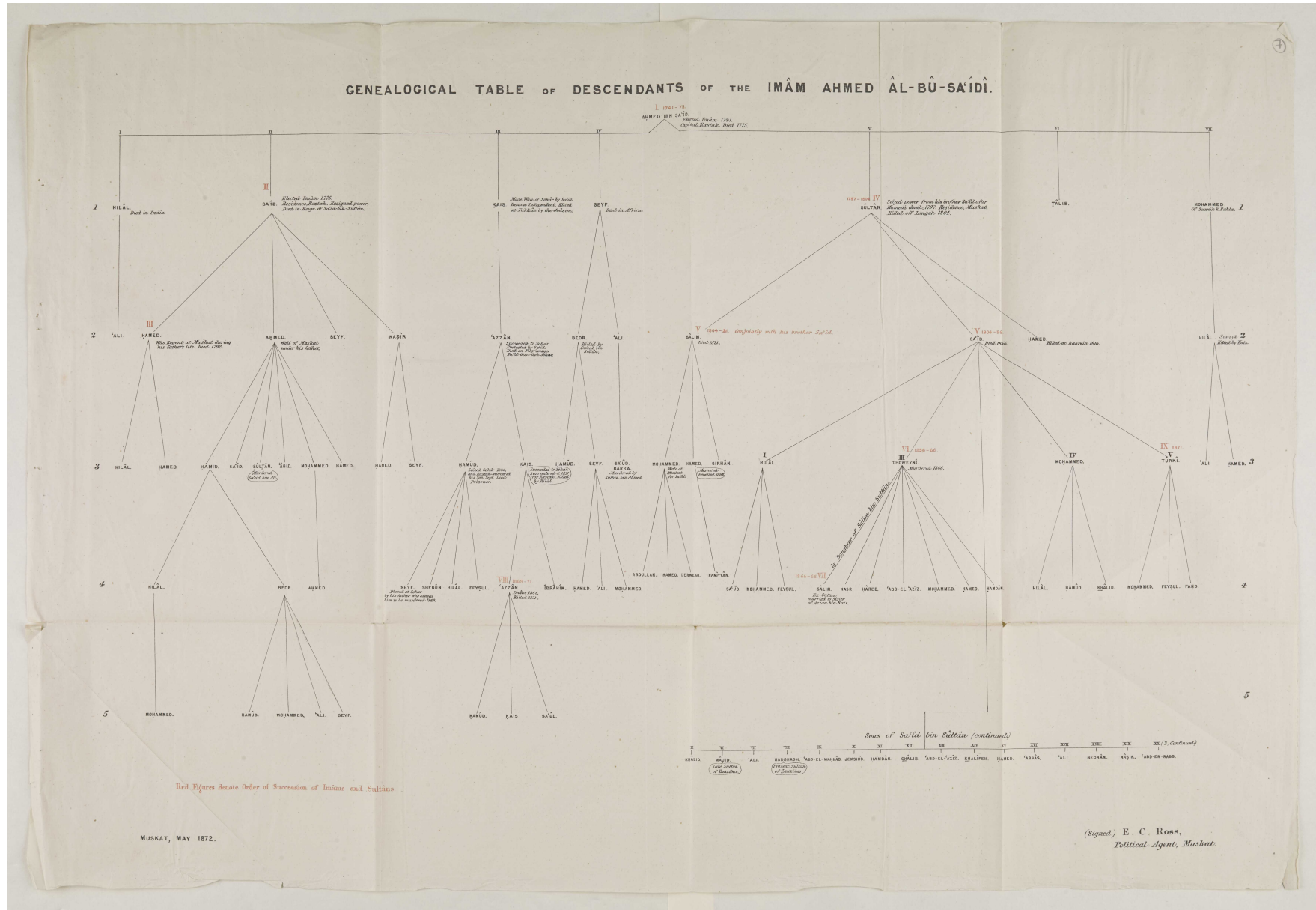
Memorandum and Table on the Tribal Divisions of Oman by Major Edward Charles Ross, Political Agent at Muscat [5v]
(10/14)



'MAP OF OMÂN SHOWING DISTRIBUTION OF THE PRINCIPAL TRIBES. COMPILED FOR OFFICIAL USE BY Edward Charles ROSS, Political Agent, MUSCAT' [6v] (2/2)



Memorandum and Table on the Tribal Divisions of Oman by Major Edward Charles Ross, Political Agent at Muscat [7r]
(13/14)



Memorandum and Table on the Tribal Divisions of Oman by Major Edward Charles Ross, Political Agent at Muscat [7v]
(14/14)

