

This PDF was generated on 28/01/2022 from online resources of
the **Qatar Digital Library**

The online record can be viewed at:

http://www.qdl.qa/en/archive/81055/vdc_100000001524.0x0003cb

It contains extra information, high resolution zoomable views and transcriptions.

Papers relating to Pelly's expedition to Riyadh, including a draft of a talk given by him to the Royal Geographical Society.

Holding Institution	British Library: India Office Records and Private Papers
Reference	Mss Eur F126/64
Date(s)	1864-1866 (CE, Gregorian)
Written in	English in Latin
Extent and Format	1 file, 7 items (12 folios)
Copyright for document	Public Domain

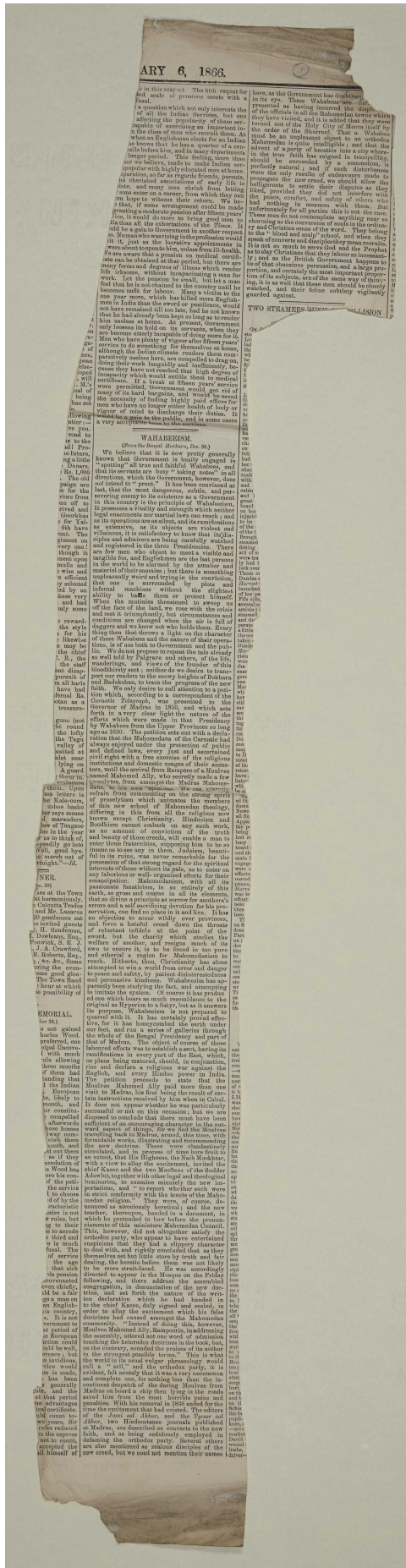


About this record

The papers relate primarily to the Royal Geographical Society who published Pelly's account of his journey to Riyadh and invited him to submit a talk to be read on his behalf at a Society event.

There is also correspondence relating to the botanical specimens collected during the expedition and an article on Wahabism, the sect of Islam followed by the Najd tribes.

Newspaper article on 'Wahabeism' [1r] (1/2)



34. Red Lion Square, W. C.

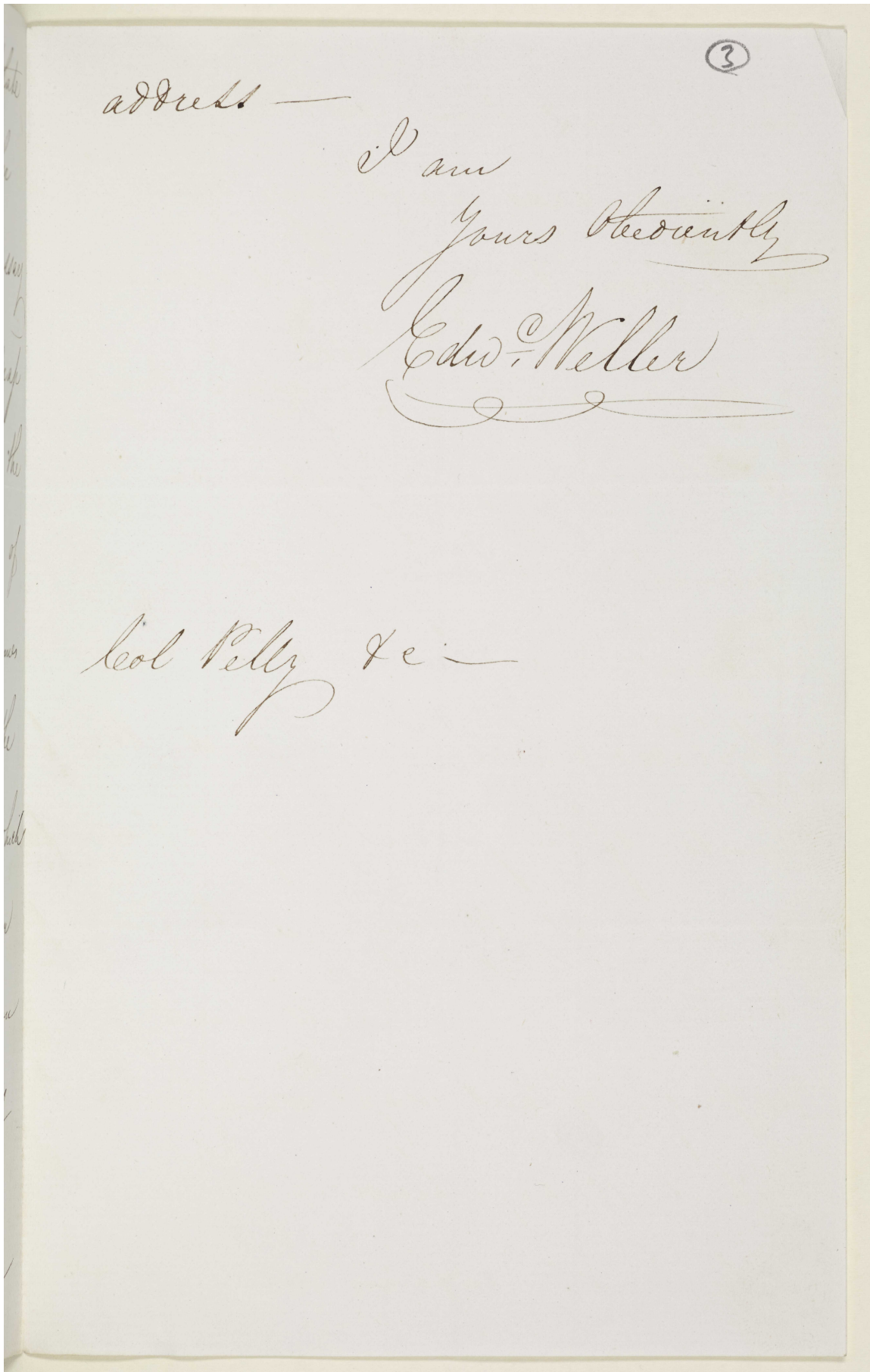
London Sept 11th / 65

Dear Sir,

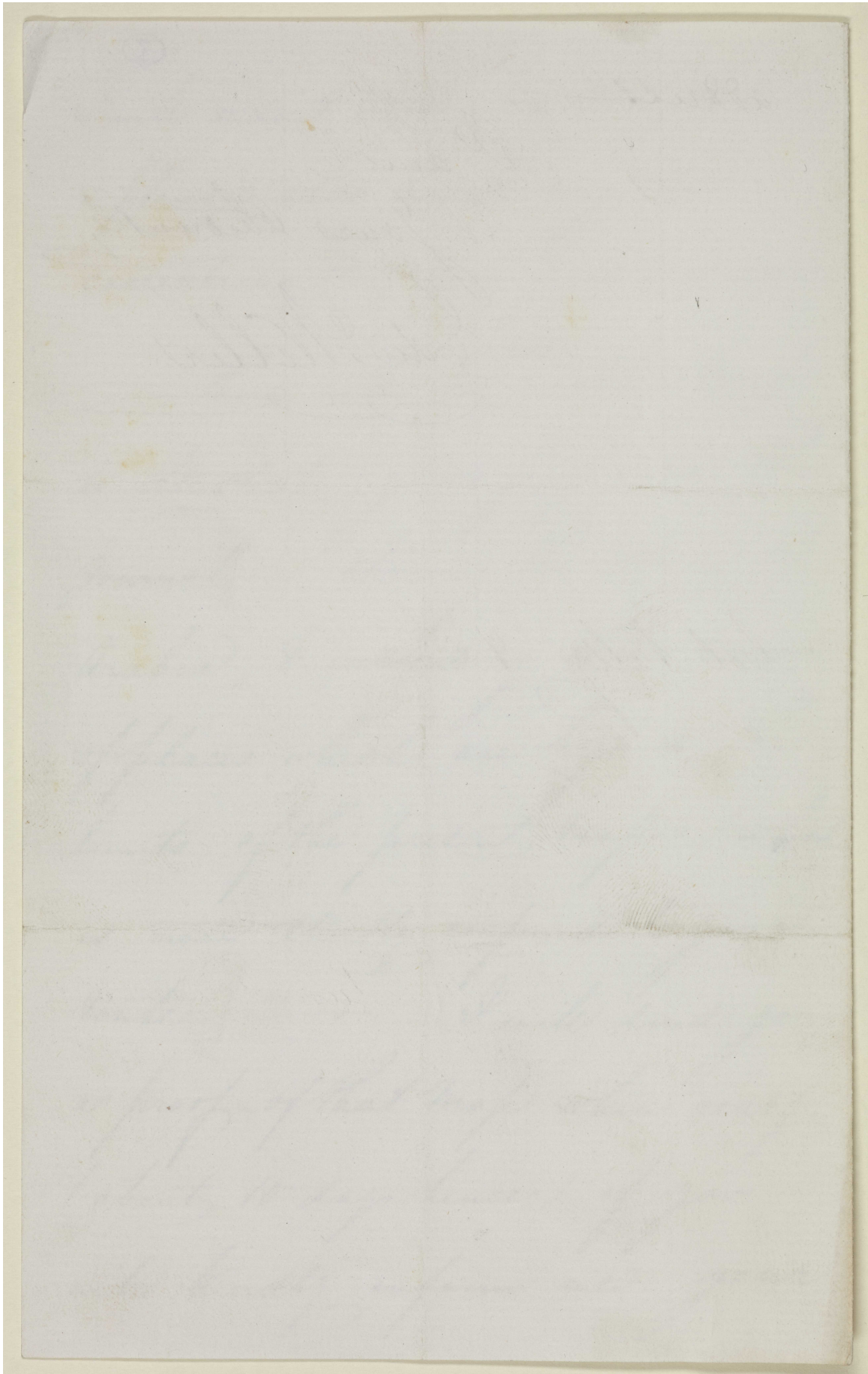
I send for your inspection proofs of the map of your route &c - as reduced for the Journal of the R. G. Society - (Mr. Bates informed me you wanted copies for another purpose) you did not mark the sites of many of the names you inserted, such as Lofy, Majmar, Delam &c) - if you can mark them on one of the prints

I will insert them on the plate
— please also mark any other
corrections &c — you find necessary
— there will be ^{also} another map
to illustrate your paper in the
Journal — showing the whole of
Arabia, & including those names
of places which are beyond the
limits of the present map — (which
is more strictly confined to your
route — I will send you
a proof of that map when ready
(about 10 days hence) if you
will kindly inform me your

Letter from Edward Weller to Pelly regarding a map for submission with an
article in the Royal Geographical Society journal [3r] (3/4)



Letter from Edward Weller to Pelly regarding a map for submission with an article in the Royal Geographical Society journal [3v] (4/4)





15, WHITEHALL PLACE, S.W.

August 15 1805

Dear Sir

Your wishes with regard to
Dr Colvill's journal shall, of course,
be carried out; therefore it will
not be published by this Society.
I had not read it myself and
the members of Council who
suggested that it might be printed
made the proviso that your consent
should first be obtained.

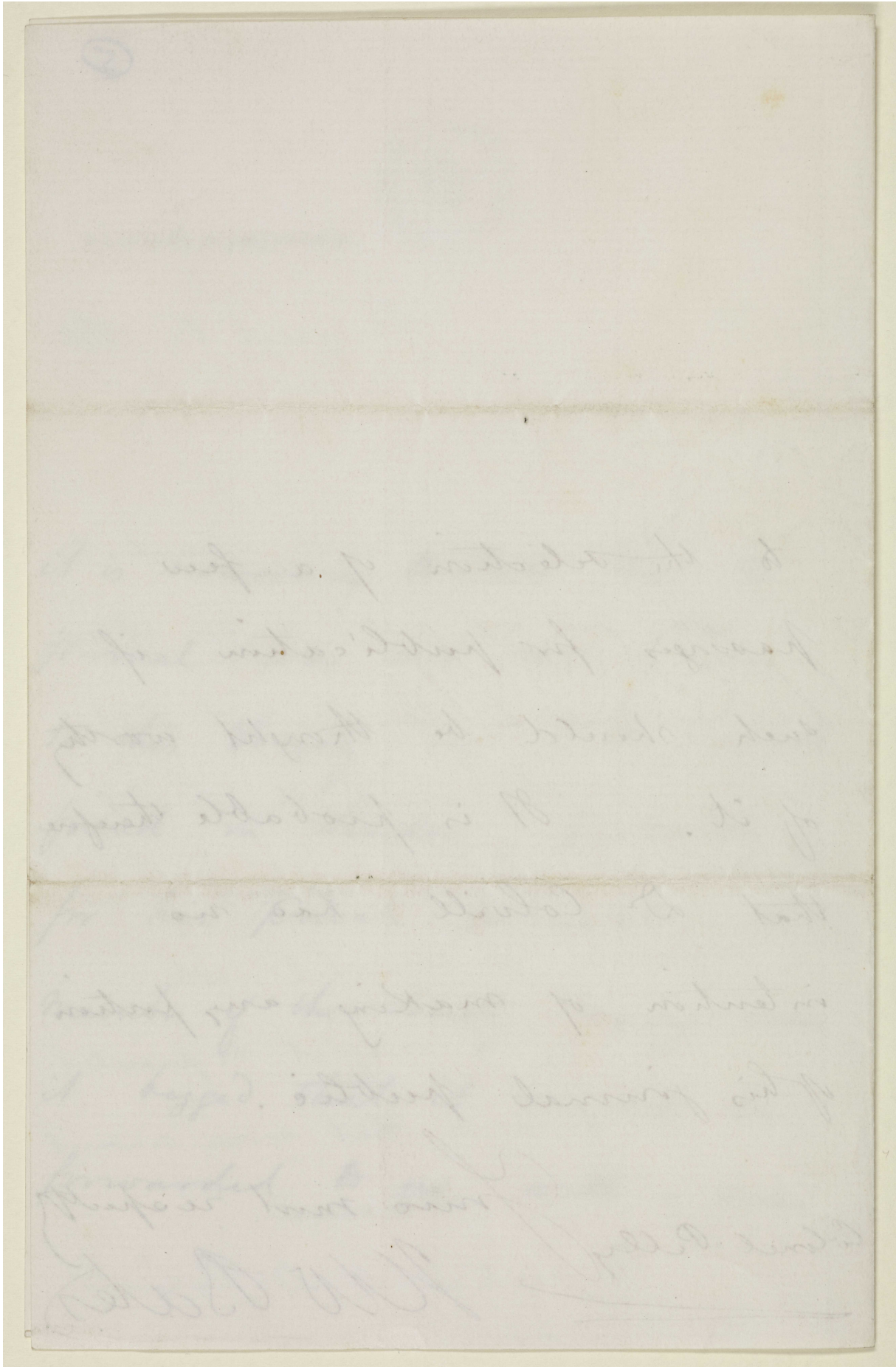
In justice to Dr Colvill

it is necessary to state that the
journal was not sent by him
to this Society, but to a private
friend in London, probably
for his private perusal. A
member of the Society having seen
it begged that it might be
forwarded to us with a view

(5)

to the selection of a few passages for publication if such should be thought worthy of it. It is probable therefore that Dr Colvill had no intention of making any portion of his journal public.

Yours most respectfully
Colonel Pelly H W Bates



1864 - 1866
Miscellaneous Papers
concerning Riadah trip
Other Papers concerning Riadh
trip placed in my book
containing my Reports of travel.

Handwritten note by Pelly regarding the contents of the file [6v] (2/2)



MSS Eur F126/64

Kew June 25/83
⑦

My dear Sir

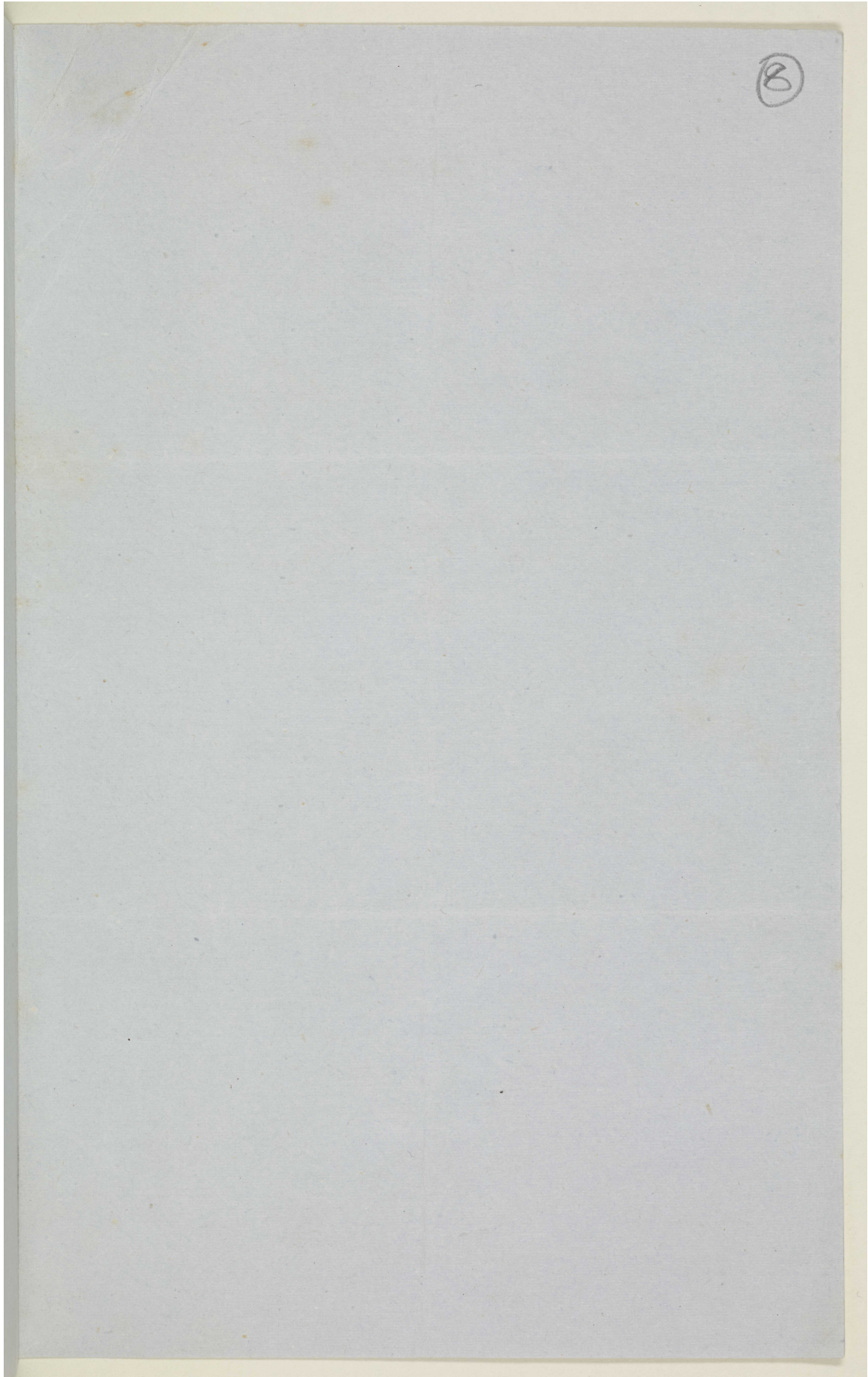
I have to thank
you very much for
the collection of Arabian
plants, amongst which
are some of considerable
interest: they seem
well & carefully preserved
I leave for Yorkshire
in a couple of days,
on my return shall
hope to examine the

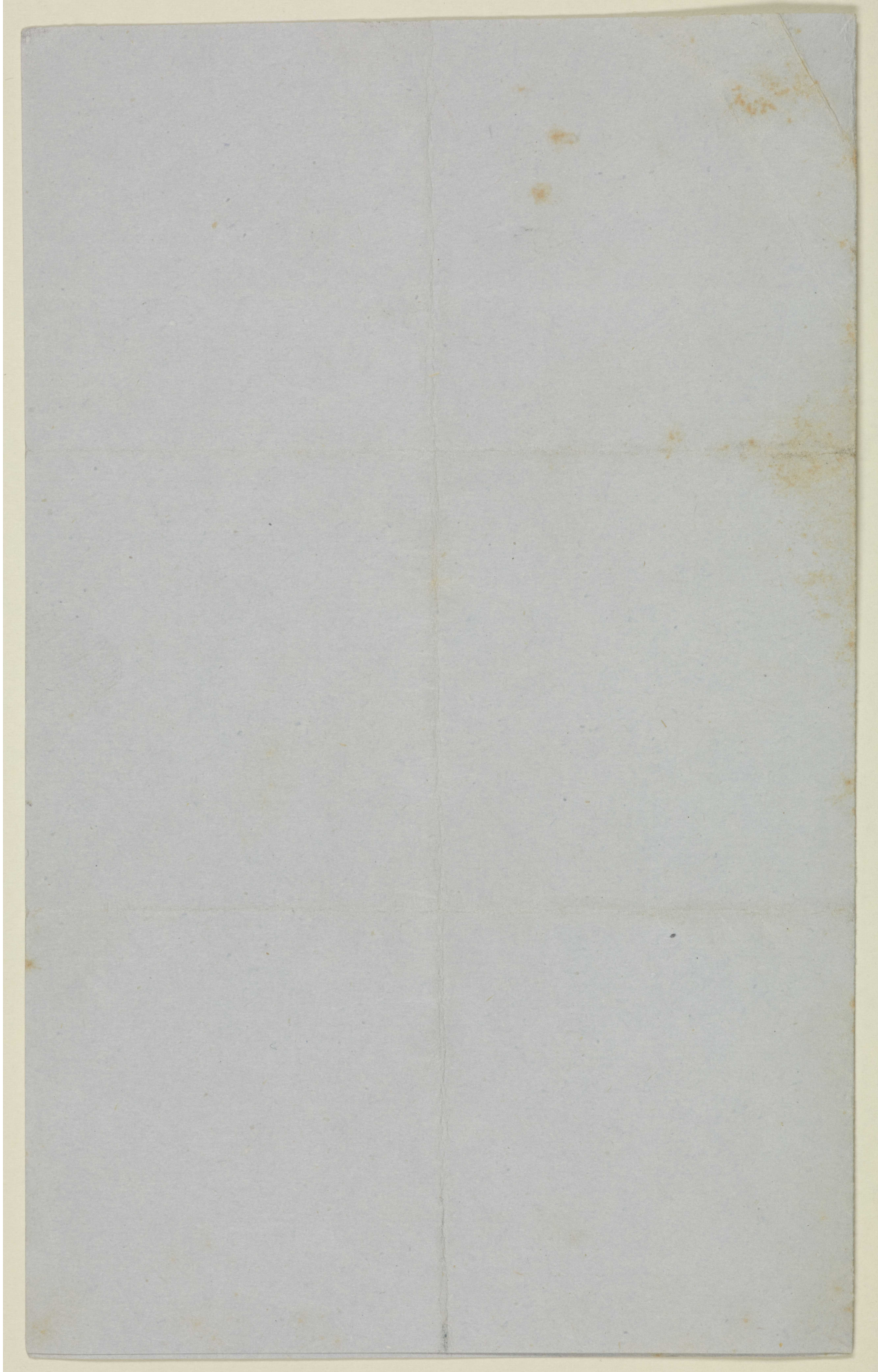
Collection carefully.

Yours very Dear Sir

Very faithfully

J. Hooker





26 Aug^r. 1865

(9) (8)

Mr. Lewis Pelley
Sir

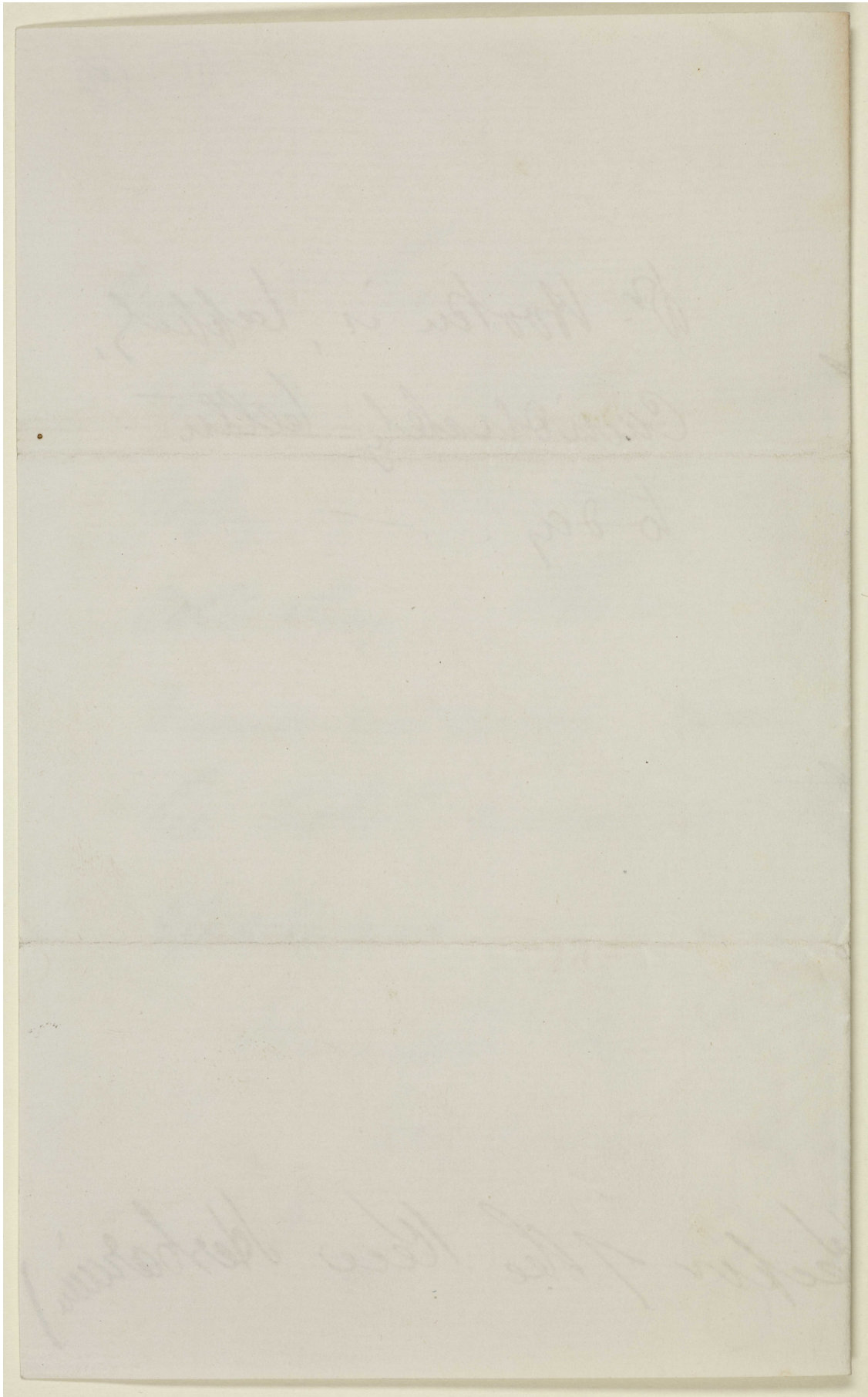
Dr. Hooker still very
pained from an attack
of pleurisy from
desires me to forward
to you as requested in
you of the 7th inst.
a named list of the
interesting Arabic
collection forwarded by

(10) 9

You to the Royal
Gardens, together with
copy of the date of
collecting & their
remembrance from
the ticket account & the
specimens.

Dear Sir
Very respect^{ly} yrs
Dan. Oliver (Keeper of the Kew Herbarium)

Correspondence from the Royal Botanical Gardens at Kew regarding specimens sent to them [10v] (3/3)



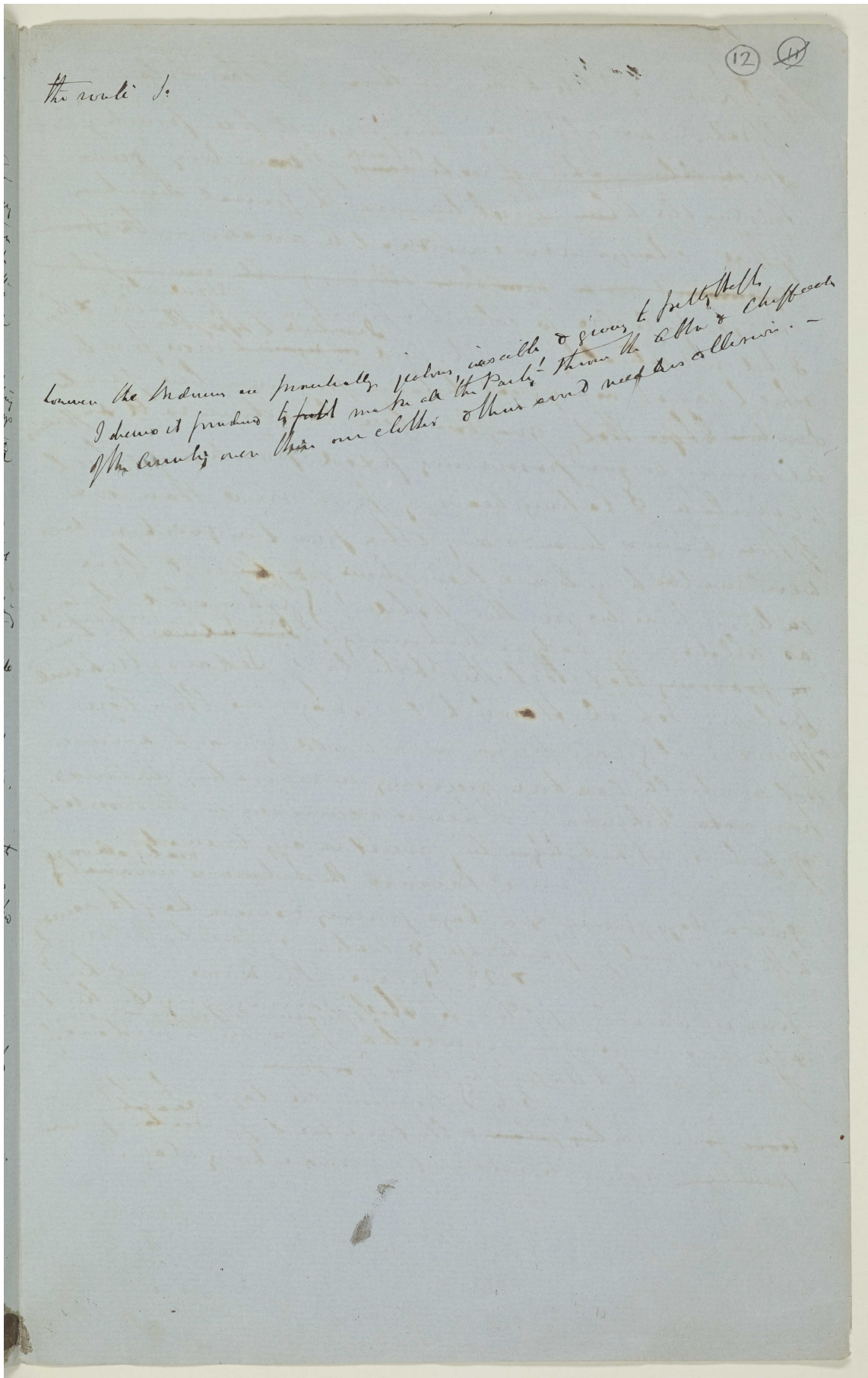
Handwritten account by Pelly of his travels to Riadh [Riyadh] and their
relevance to the Royal Geographical Society [11r] (1/4)

(11) (10)

~~It has been part of my duty since~~
 During the past six years it has formed
 part of my duty in the Government service to
 traverse some portions of Southern Central Asia
 not frequently visited by Europeans. - In this manner
 I have ~~travell'd~~ ^{crossed} from the Black Sea to the Port of
 Kuraehie ~~on~~ our Indian Frontier, passing through
 Turkish Armenia, Persia, the Turcoman Frontier, Herat,
 Afghanistan & the Borders of Seistan and Beloochistan
 and ~~2d~~ ^{many} regions whether Persian
 Arabic or Belooche, around the shore line of the
 Persian Gulf. ^{It has been my duty to report to the}
~~and to the Society, but the Society have been busy in~~
~~dealing with reports on their part~~ ^{Mr. Napier's Indian}
~~Government. One of those has~~ ^{been}
~~to this Society, and the others are~~ ^{presented}
~~at its disposal.~~

My most recent trip however has
 been one on which I have not yet found leisure
 to report. But concerning which Sir Robert
 Murchison is so good as desire a brief notice ⁱⁿ
~~the~~ ^{the} ~~information~~ ^{of} ~~the~~ ^{the} ~~Royal~~ ^{the} ~~Geographical~~ ^{the} ~~Society.~~ ^{the}
 The fact is that about a year ago Mr. Hume the
 President of the Geographical Society ^{providing} ^{on} ^{28th} ^{April} ¹⁸⁶⁴ ^{London}
 my attention to the fact that certain questions
 had been mooted in London relative to the geography
 of the Interior of Arabia & that it was still a
 desideratum to determine with scientific accuracy
 the position of the capital of ^{Riyadh} ^{of} ^{the} ^{Arab} ^{of} ^{the} ^{peninsula}
 character of the track intervening between ^{the}
 Capital & the littoral of the Persian Gulf. It so happened
 also that about the same time I was ^{asked} ^{to} ^{give} ^a ^{public}
^{ground} ^{for} ^a ^{personal} ^{interview} ^{with} ^{the} ^{Chief} ^{of} ^{the} ^{Arab}
 and ~~on~~ ~~the~~ ~~whole~~ ~~I~~ ~~therefore~~ ~~determined~~ ~~therefore~~ ~~to~~ ~~proceed~~ ~~to~~
 Riyadh ~~and~~ ~~thence~~ ~~Riyadh~~, pursuing one route into the

Handwritten account by Pelly of his travels to Riadh [Riyadh] and their
relevance to the Royal Geographical Society [12r] (3/4)



Handwritten account by Pelly of his travels to Riadh [Riyadh] and their
relevance to the Royal Geographical Society [12v] (4/4)

of Dhair, a little to the Southward of the Island
of Bahari, we obtained two series of fixed points
for the determination of each ^{change} ~~range~~ of ~~beating~~ ^{beating} ~~ground~~
this enables to lay the distance in the general direction
of these changes over considerable areas. - The ~~two~~
~~series~~ ~~of~~ ~~points~~ ~~have~~ ~~been~~ ~~obtained~~ ~~by~~ ~~the~~ ~~same~~ ~~method~~
I was careful also to collect information ^{of the} ~~of~~ ~~the~~ ~~points~~ ~~which~~
I did not actually visit. And ~~in~~ ~~some~~ ~~of~~ ~~these~~ ~~points~~
which lay at no very great distance from our line points
I ~~was~~ ~~able~~ ~~to~~ ~~visit~~ ~~them~~ ~~and~~ ~~was~~ ~~able~~ ~~to~~ ~~ascertain~~
accuracy by ~~using~~ ~~known~~ ~~fixed~~ ~~points~~ ~~from~~ ~~which~~
to calculate & taking bearings from more than one
of these known towards any other point in question we
were enabled to determine our line, & ~~also~~ ~~of~~ ~~these~~
calculations we further noted ^{the} ~~the~~ ~~distance~~
as collected from native testimony. ~~and~~ ~~to~~ ~~ascertain~~
~~in~~ ~~forming~~ ~~that~~ ~~the~~ ~~distances~~ ~~of~~ ~~Sedar~~ ~~Al~~ ~~Mahmed~~
Kotani, Sek El Hawket or may have thus been
approximately laid down. - I would remark however
that considerable caution is necessary in estimating distances
from native testimony, because accuracy in the statement
of facts is not a distinguishing merit in any ^{nearby} ~~nearby~~ ~~always~~
i. Because the distance is ^{usually} ~~usually~~ ~~always~~
given in days journey, & a days journey varies in length according
to the requirements of portage & water & character of the country.
ii. Because the name of a ~~distance~~
term is usually applied to ~~the~~ ~~distance~~ ~~of~~ ~~the~~ ~~country~~
& the distance is often calculated from the boundary
of one district to that of the other ^{or} ~~or~~ ~~from~~
iii. Because the day on which you
leave your starting place & that on which you ~~reach~~ ~~your~~ ~~destination~~
is ~~not~~ ~~always~~ ~~the~~ ~~same~~ ~~as~~ ~~the~~ ~~number~~ ~~of~~ ~~days~~
passed ~~in~~ ~~the~~ ~~journey~~ ~~is~~ ~~not~~ ~~always~~ ~~the~~ ~~same~~ ~~as~~ ~~the~~ ~~number~~ ~~of~~ ~~days~~