



This PDF was generated on 19/12/2016 from online resources as part of the Qatar Digital Library's digital archive.

The online record contains extra information, high resolution zoomable views and transcriptions. It can be viewed at:

http://www.qdl.qa/en/archive/81055/vdc_100022874925.0x000001

Reference	IOR/X/3086/2
Title	'A PART OF BELUCHISTAN WITH PART OF MEKRAN AND THE PERSO-BELUCH BOUNDARY DRAWN & COMPILED BY CAPTAIN BERESFORD LOVETT R.E. attached to the Special Mission to Mekran UNDER MAJOR GENERAL F.J. GOLDSMID, C.B. From actual surveys by Major E.C. Ross, Assistant Political Agent, Gwadar; Captain Beresford Lovett, R.E.; and Quarter Master Serjeant D. Bower, R.E.'
Date(s)	c 1870 (CE, Gregorian)
Written in	English in Latin
Extent and Format	1 map
Holding Institution	British Library: Map Collections
Copyright for document	Public Domain

About this record

Imprint:

Trel. Saunders, India Office. Lithographed from tracings entitled: 'Beluchistan, comprising Mekran and the Perso-Beluch Boundary'.

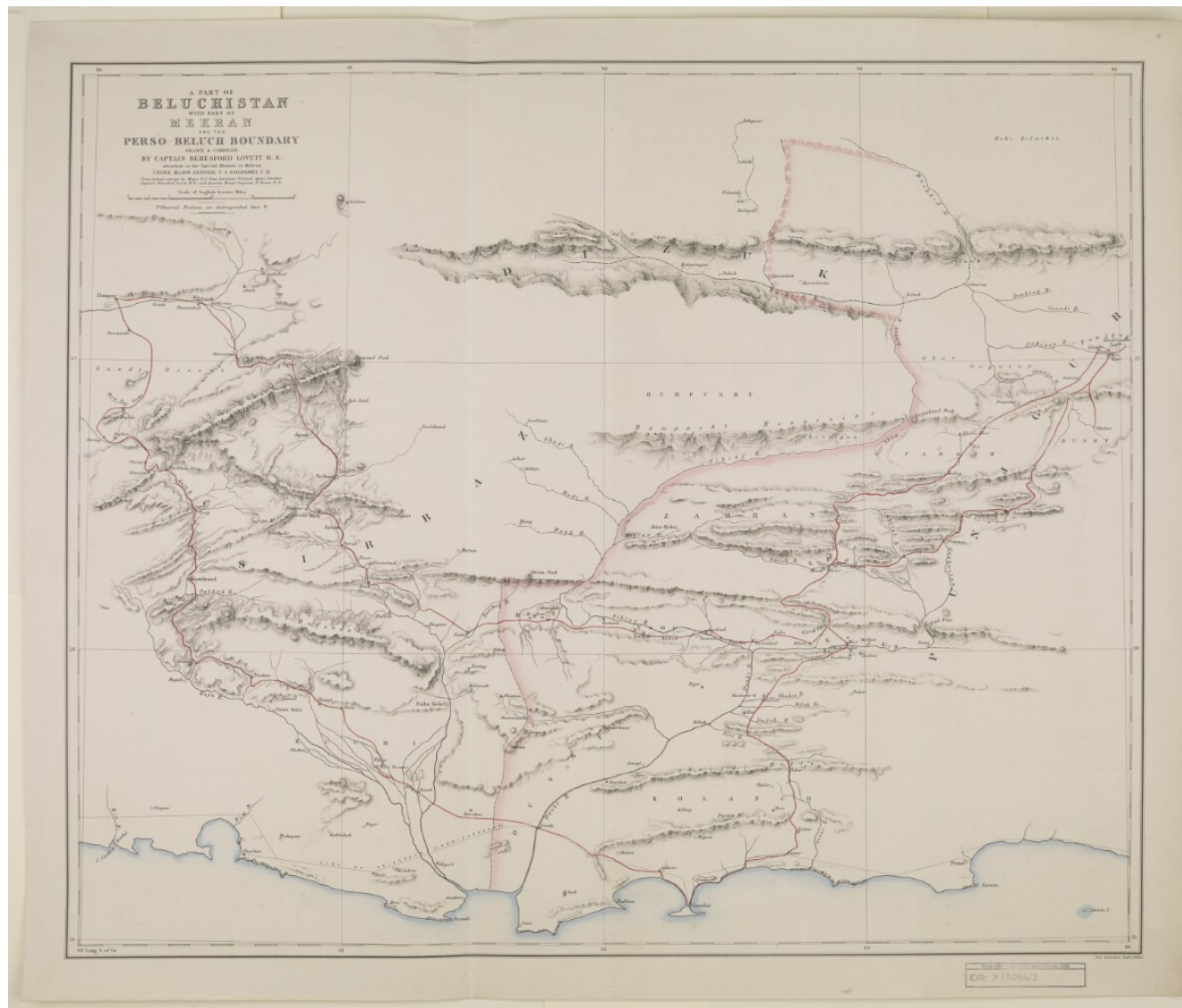
Distinctive Features:

Relief shown by shading.

Coloured for reference with boundary indicated by pecked line and tinted pink. Routes shown in red and Indo-European Telegraph by a black thin line. Includes explanation to symbols.



**'A PART OF BELUCHISTAN WITH PART OF MEKRAN AND THE PERSO-BELUCH BOUNDARY DRAWN & COMPILED BY CAPTAIN BERESFORD LOVETT
R.E. attached to the Special Mission to Mekran UNDER MAJOR GENERAL F.J. GOLDSMID, C.B. From actual surveys by Major E.C.
Ross, Assistant Political Agent, Gwadar; Captain Beresford Lovett, R.E.; and Quarter Master Serjeant D. Bower, R.E.'**
[1r] (1/2)





**'A PART OF BELUCHISTAN WITH PART OF MEKRAN AND THE PERSO-BELUCH BOUNDARY DRAWN & COMPILED BY CAPTAIN BERESFORD LOVETT
R.E. attached to the Special Mission to Mekran UNDER MAJOR GENERAL F.J. GOLDSMID, C.B. From actual surveys by Major E.C.
Ross, Assistant Political Agent, Gwadur; Captain Beresford Lovett, R.E.; and Quarter Master Serjeant D. Bower, R.E.'**
[1v] (2/2)

