



This PDF was generated on 19/12/2016 from online resources as part of the Qatar Digital Library's digital archive.

The online record contains extra information, high resolution zoomable views and transcriptions. It can be viewed at:

http://www.qdl.qa/en/archive/81055/vdc_100023203943.0x000001

Reference	IOR/L/MIL/17/15/125/2
Title	'Mesopotamian Transport Commission. Report of the Commission Appointed by the Government of India with the Approval of the Right Hon'ble The Secretary of State for India, to Enquire into Questions Connected with the Organisation and Administration of the Railway and River Transport in Mesopotamia. Maps'
Date(s)	1917-1918 (CE, Gregorian)
Written in	English in Latin
Extent and Format	1 volume (2 folios)
Holding Institution	British Library: India Office Records and Private Papers
Copyright for document	Open Government Licence

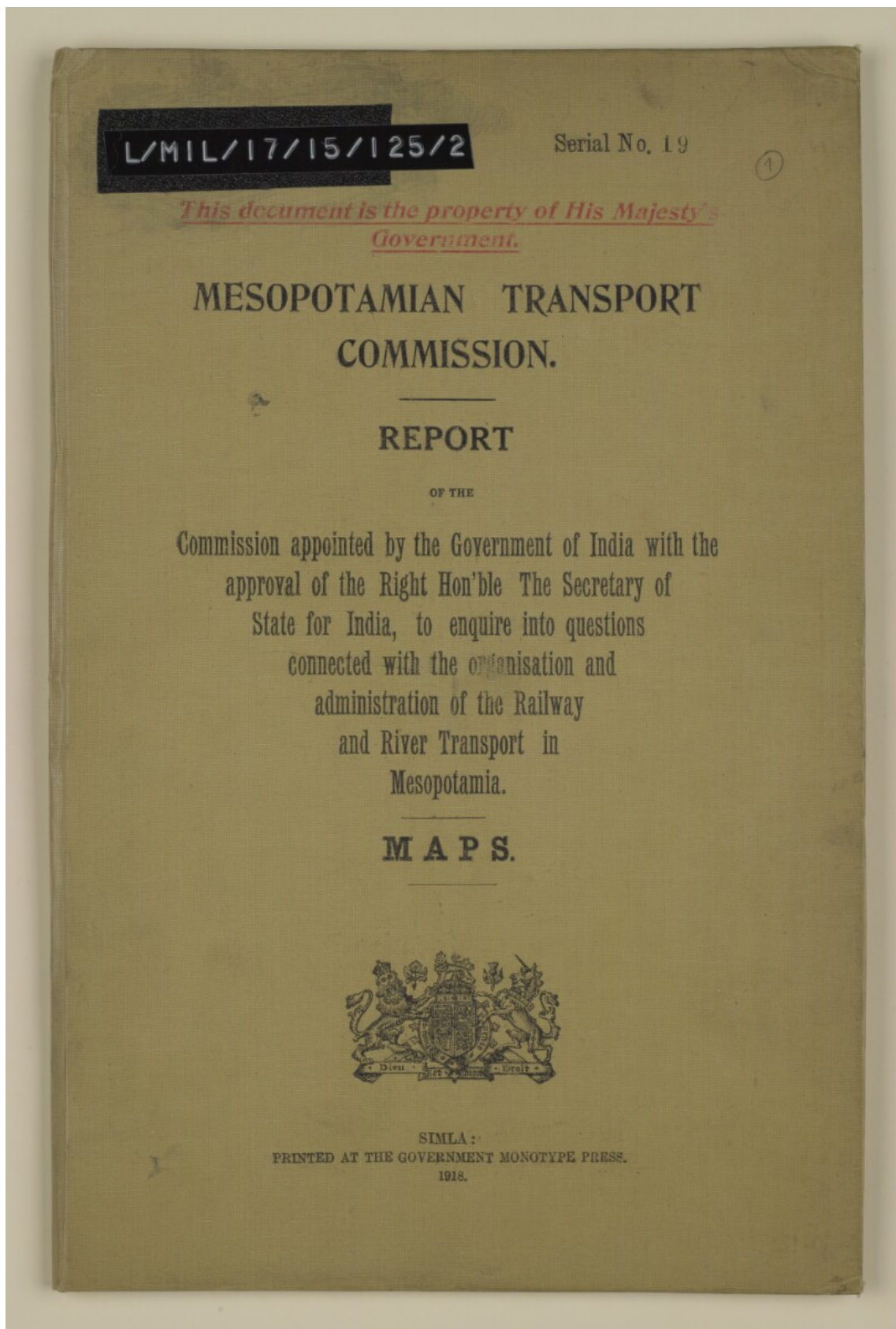
About this record

The volume is *Mesopotamian Transport Commission. Report of the Commission Appointed by the Government of India with the Approval of the Right Hon'ble The Secretary of State for India, to Enquire into Questions Connected with the Organisation and Administration of the Railway and River Transport in Mesopotamia. Maps* (Simla: Government Monotype Press, 1918).

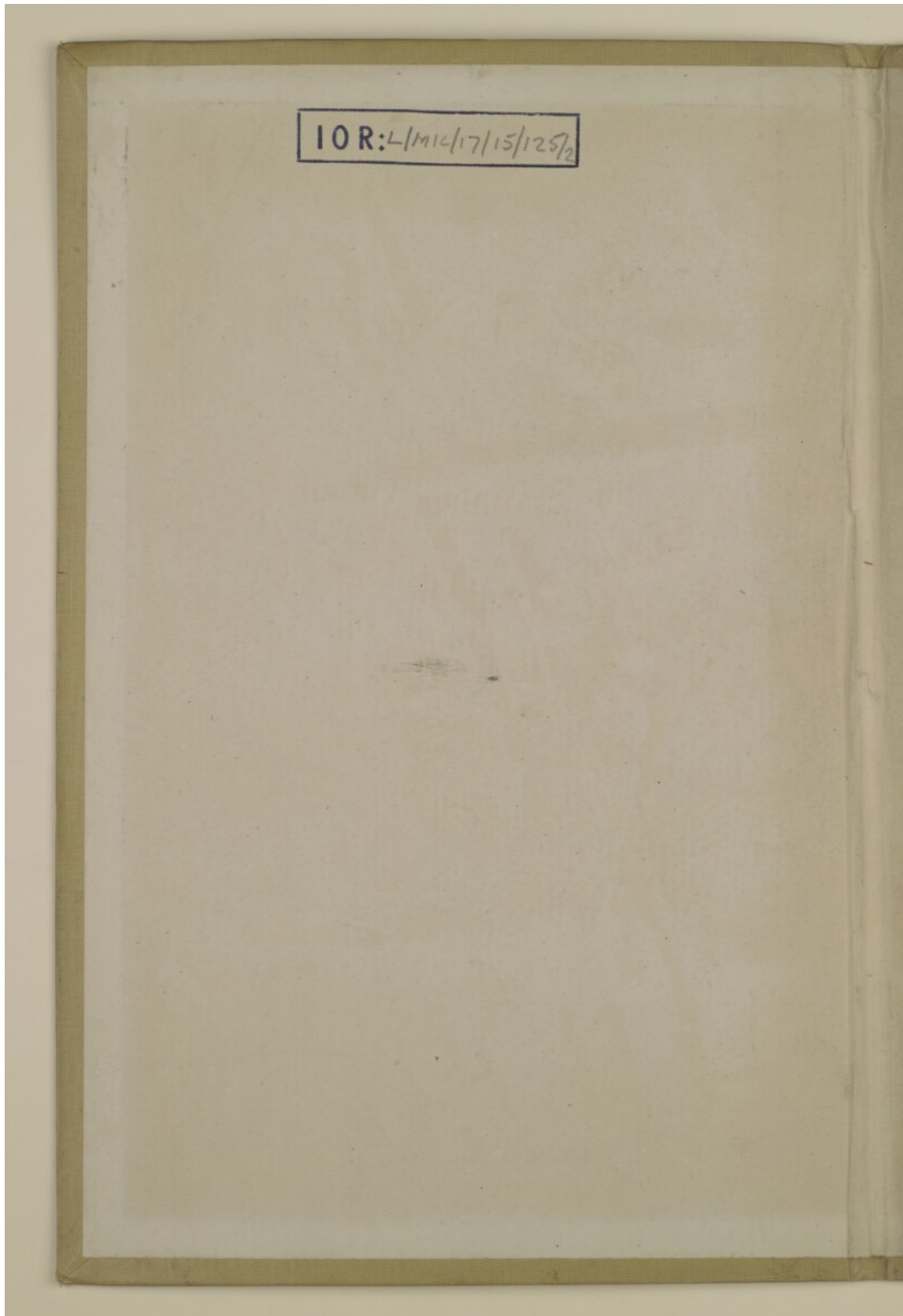
The volume contains the following two maps:

- 'Index Plan Showing Mesopotamian Railways (Preliminary Plan)', March 1918 (folio 2)
- 'Railway Map of Basra and Magil Showing Tentative Proposals for Port Development', reproduced June 1917; signed February 1918 (folio 3).

'Mesopotamian Transport Commission. Report of the Commission Appointed by the Government of India with the Approval of the Right Hon'ble The Secretary of State for India, to Enquire into Questions Connected with the Organisation and Administration of the Railway and River Transport in Mesopotamia. Maps' [front] (1/8)

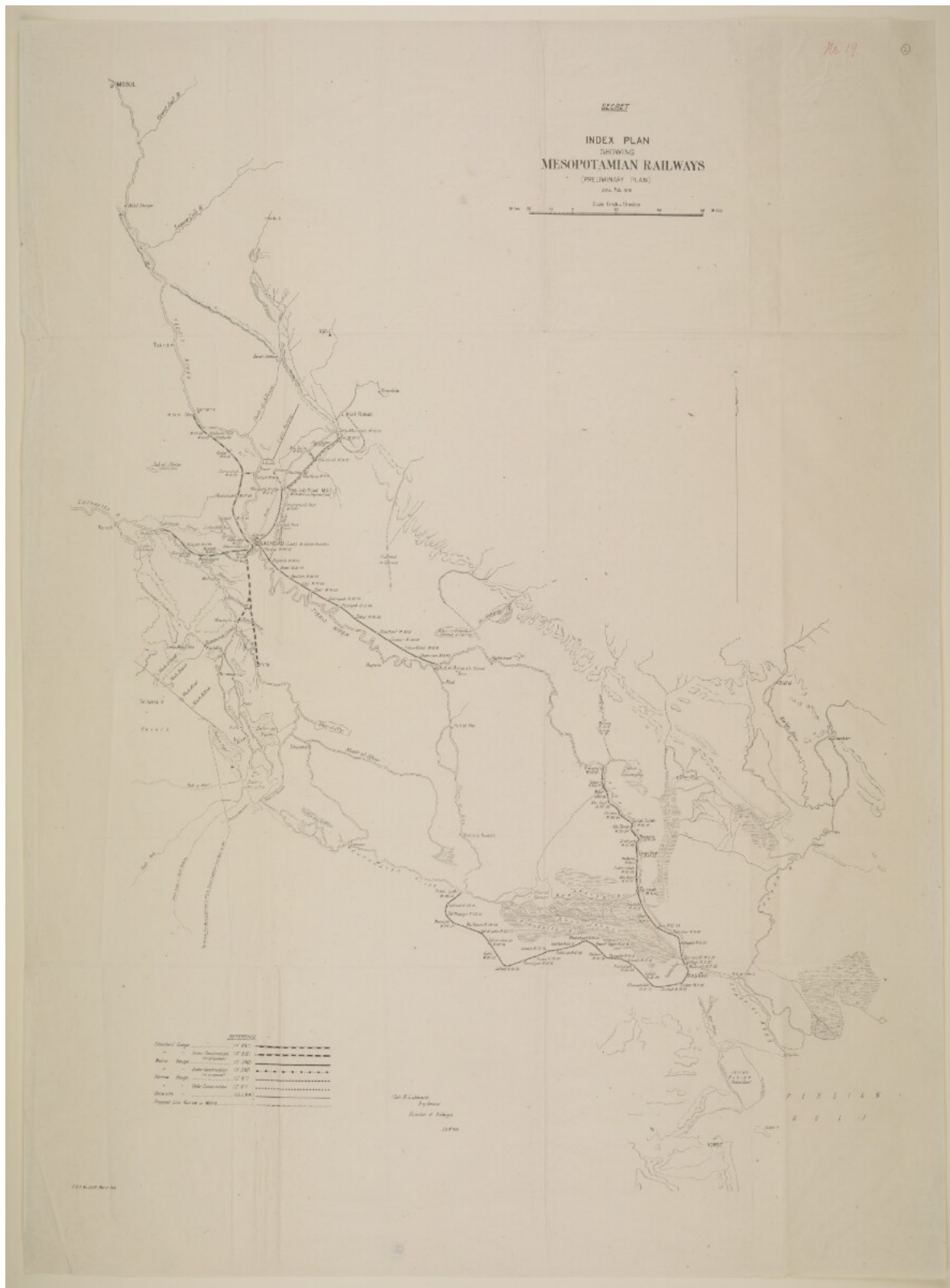


'Mesopotamian Transport Commission. Report of the Commission Appointed by the Government of India with the Approval of the Right Hon'ble The Secretary of State for India, to Enquire into Questions Connected with the Organisation and Administration of the Railway and River Transport in Mesopotamia. Maps'
[front-i] (2/8)

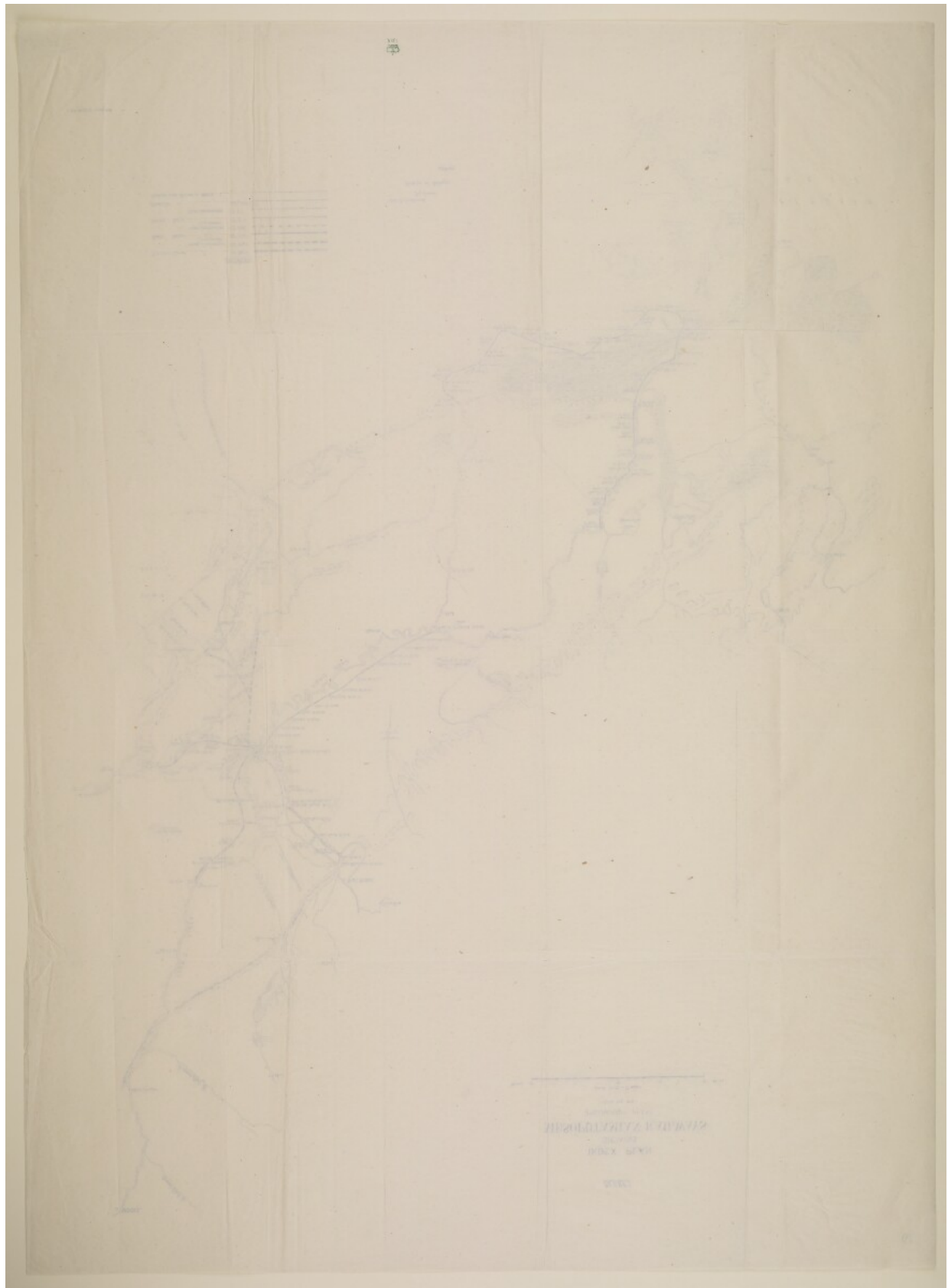




'Mesopotamian Transport Commission. Report of the Commission Appointed by the Government of India with the Approval of the Right Hon'ble The Secretary of State for India, to Enquire into Questions Connected with the Organisation and Administration of the Railway and River Transport in Mesopotamia. Maps' [2r] (3/8)

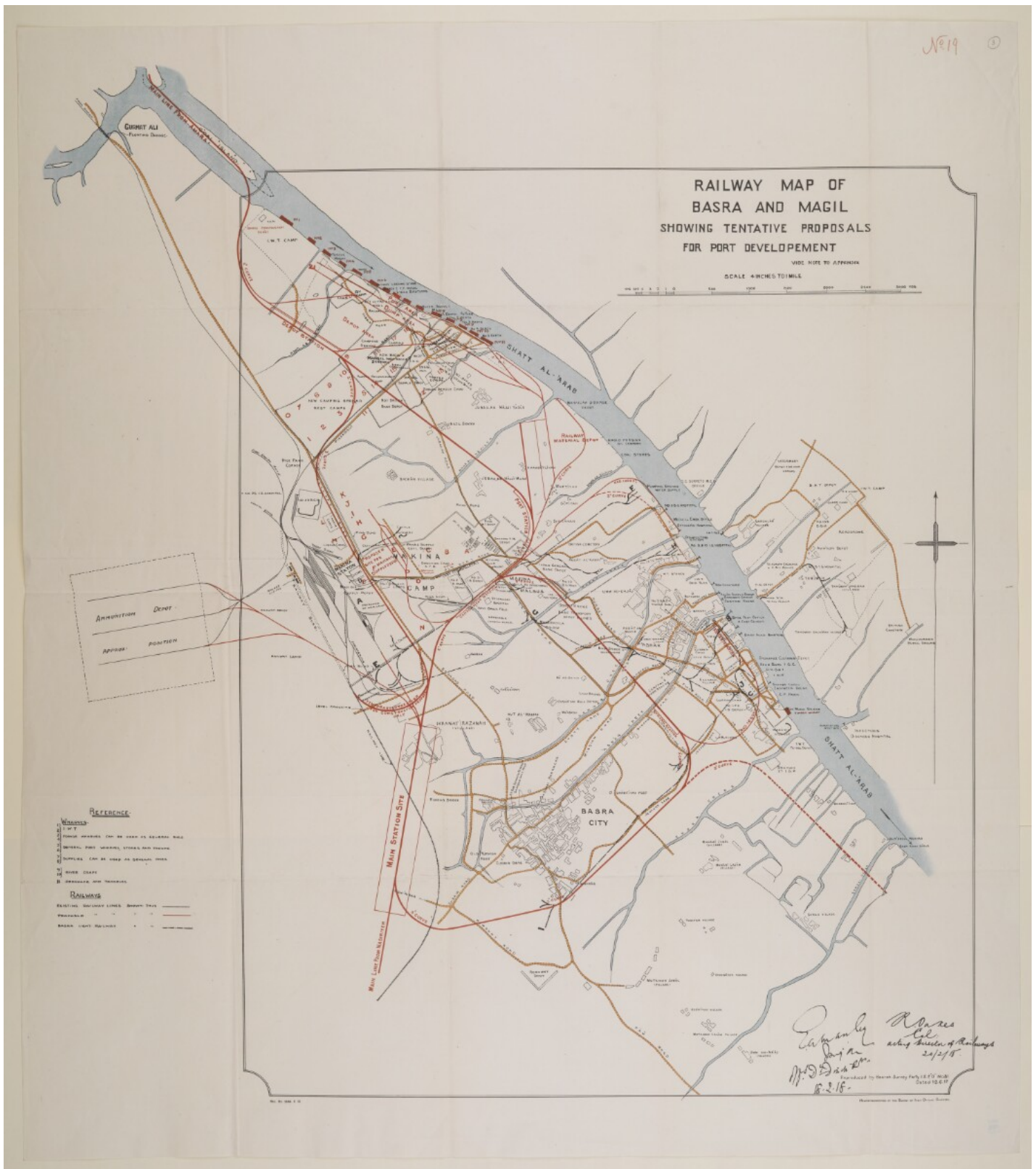


'Mesopotamian Transport Commission. Report of the Commission Appointed by the Government of India with the Approval of the Right Hon'ble The Secretary of State for India, to Enquire into Questions Connected with the Organisation and Administration of the Railway and River Transport in Mesopotamia. Maps' [2v] (4/8)





'Mesopotamian Transport Commission. Report of the Commission Appointed by the Government of India with the Approval of the Right Hon'ble The Secretary of State for India, to Enquire into Questions Connected with the Organisation and Administration of the Railway and River Transport in Mesopotamia. Maps' [3r] (5/8)

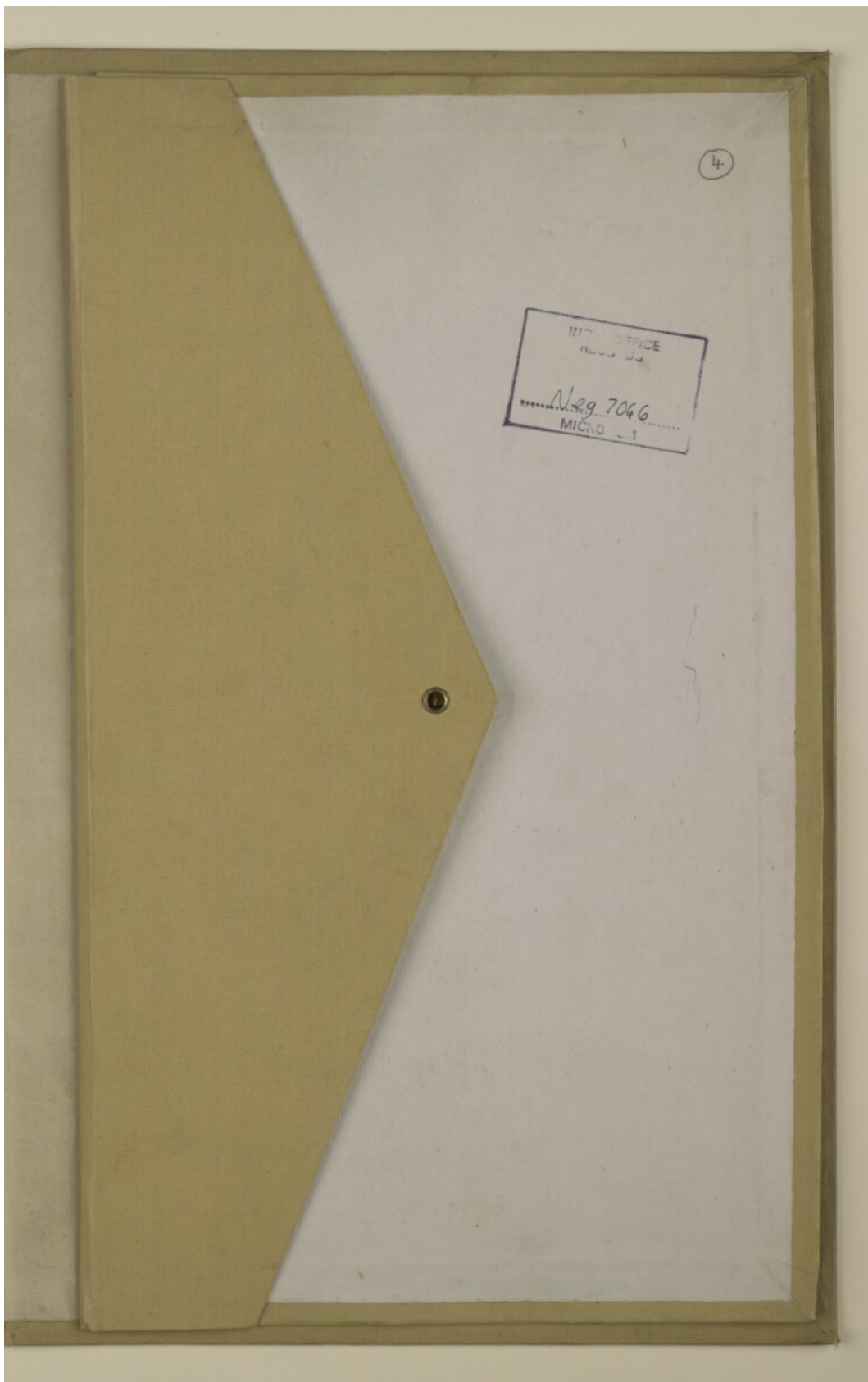


'Mesopotamian Transport Commission. Report of the Commission Appointed by the Government of India with the Approval of the Right Hon'ble The Secretary of State for India, to Enquire into Questions Connected with the Organisation and Administration of the Railway and River Transport in Mesopotamia. Maps' [3v] (6/8)





'Mesopotamian Transport Commission. Report of the Commission Appointed by the Government of India with the Approval of the Right Hon'ble The Secretary of State for India, to Enquire into Questions Connected with the Organisation and Administration of the Railway and River Transport in Mesopotamia. Maps' [back-i] (7/8)



**'Mesopotamian Transport Commission. Report of the Commission Appointed by the Government of India with the Approval of the Right Hon'ble The Secretary of State for India, to Enquire into Questions Connected with the Organisation and Administration of the Railway and River Transport in Mesopotamia. Maps' [back]
(8/8)**

